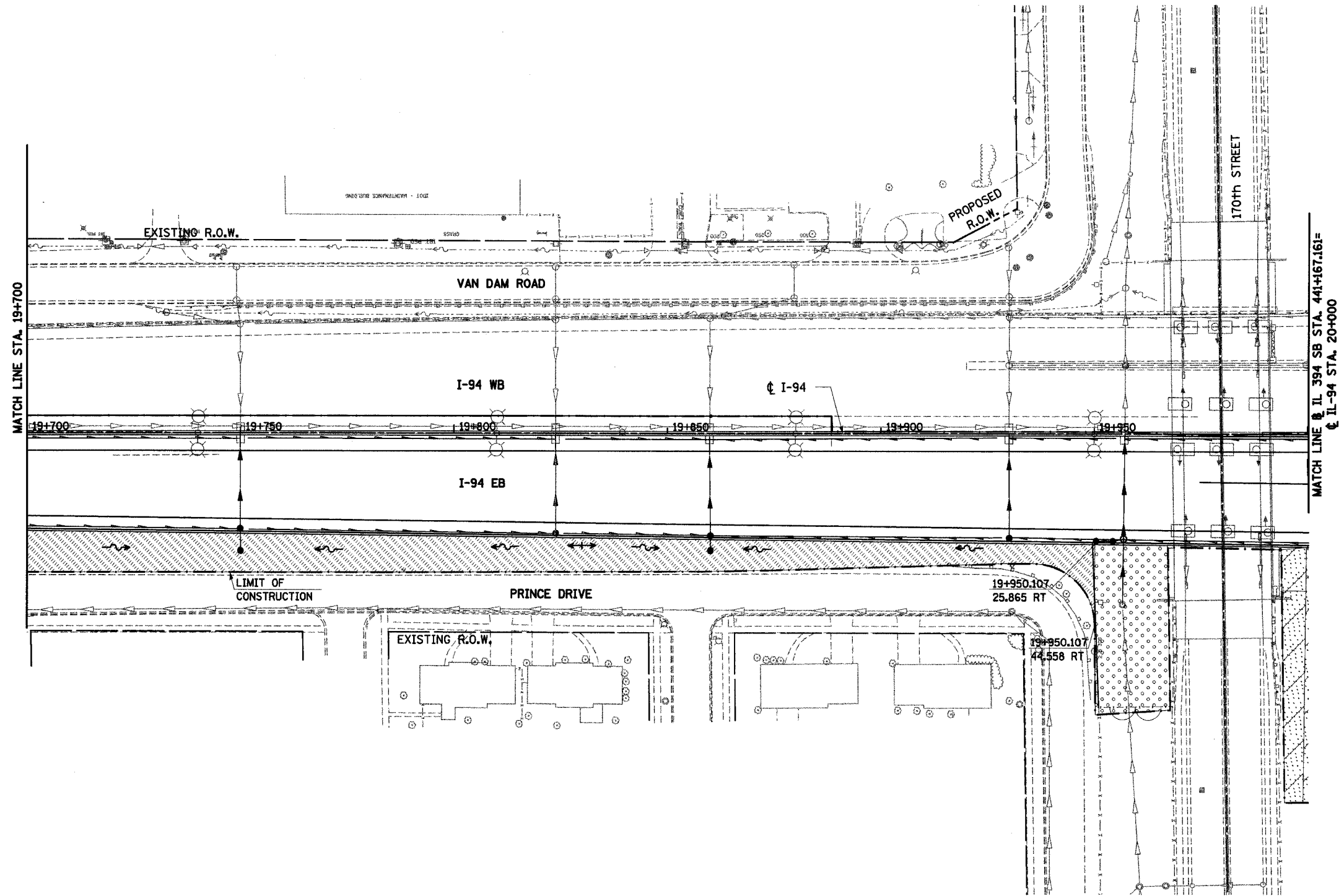
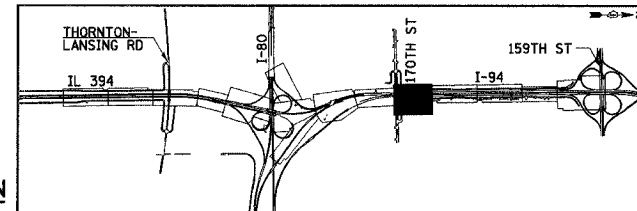


F.A.I. RTE	SECTION	COUNTY	TOTAL SHEETS	SHEET NO.
80/94	*	COOK	870	391
STA. 19+700		TO STA. 20+000		
FED ROAD DIST. NO.		ILLINOIS FED. AID PROJECT		



- NOTES:
1. WORK THIS SHEET WITH THE EROSION AND SEDIMENT CONTROL GENERAL NOTES, LEGEND AND STRATEGY SHEETS.
  2. ALL STATIONING AND OFFSET MEASUREMENTS OFF  $\phi$  I-94 UNLESS OTHERWISE NOTED.
  3. ALL DIMENSIONS ARE IN METERS (m) UNLESS OTHERWISE NOTED.



REVISIONS	
NAME	DATE

ILLINOIS DEPARTMENT OF TRANSPORTATION  
 I-94 EAST BOUND / IL 394 SOUTH BOUND

**EROSION CONTROL PLAN**  
 I-94  
 STA. 19+700 TO STA. 20+000

HORIZ SCALE:  
 VERT SCALE:  
 DATE: JULY 18, 2005

DRAWN BY: JPH  
 CHECKED BY: MAM

**FINAL CONDITION**

