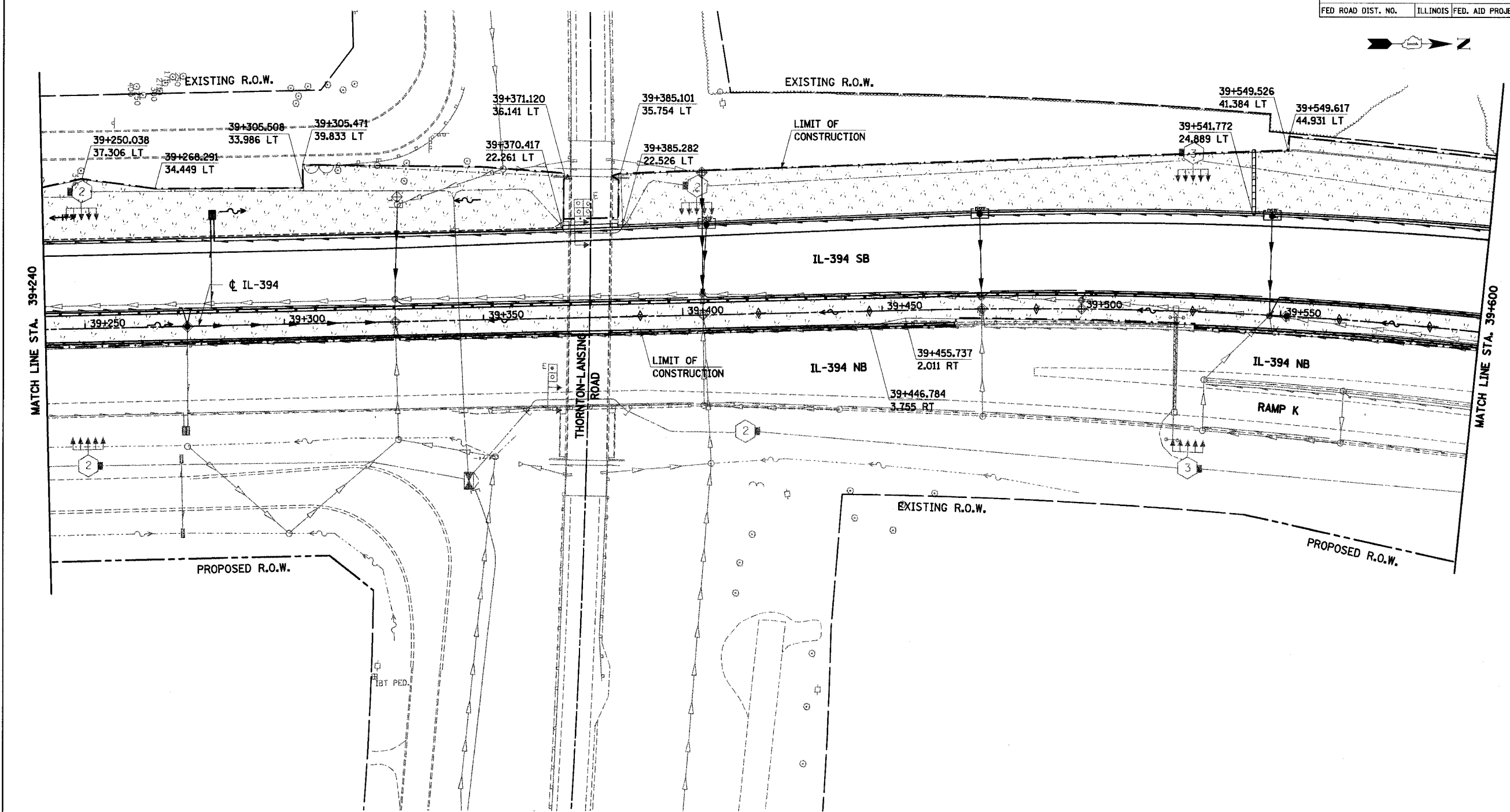


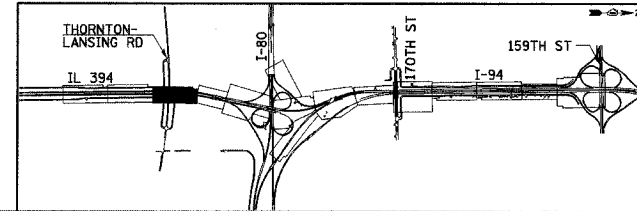
F.A.I. RTE	SECTION	COUNTY	TOTAL SHEETS	SHEET NO.
80/94	*	COOK	870	395
STA. 39+240		TO STA. 39+600		
FED ROAD DIST. NO.		ILLINOIS FED. AID PROJECT		



**NOTES:**

1. WORK THIS SHEET WITH THE EROSION AND SEDIMENT CONTROL GENERAL NOTES, LEGEND AND STRATEGY SHEETS.
2. ERODIBLE AREAS TO BE TEMPORARILY SEEDD DURING CONSTRUCTION AS REQUIRED BY THE EROSION AND SEDIMENT CONTROL GENERAL NOTES.
3. ALL STATIONING AND OFFSET MEASUREMENTS OFF CL IL-394 UNLESS OTHERWISE NOTED.
4. SEDIMENT TRAPS TO BE PLACED AT OUTLET OF ALL SLOPE DRAINS (NOT SHOWN FOR CLARITY).
5. ALL DIMENSIONS ARE IN METERS (m) UNLESS OTHERWISE NOTED.
6. TEMPORARY FENCE TO BE PLACED AT LOCATIONS ALONG ALL CONSTRUCTION LIMITS WHERE PERIMETER EROSION BARRIER IS NOT INDICATED (TEMPORARY FENCE NOT SHOWN AT THESE LOCATIONS FOR CLARITY).

**DURING CONSTRUCTION**



REVISIONS	
NAME	DATE

EC-14

ILLINOIS DEPARTMENT OF TRANSPORTATION  
I-94 EAST BOUND / IL 394 SOUTH BOUND

**EROSION CONTROL PLAN**  
**IL 394**  
**STA. 39+240 TO STA. 39+600**

HORIZ SCALE: 1:500  
VERT SCALE: 1:500  
DATE: JULY 18, 2005

DRAWN BY: JPH  
CHECKED BY: NAM

**HNTB**