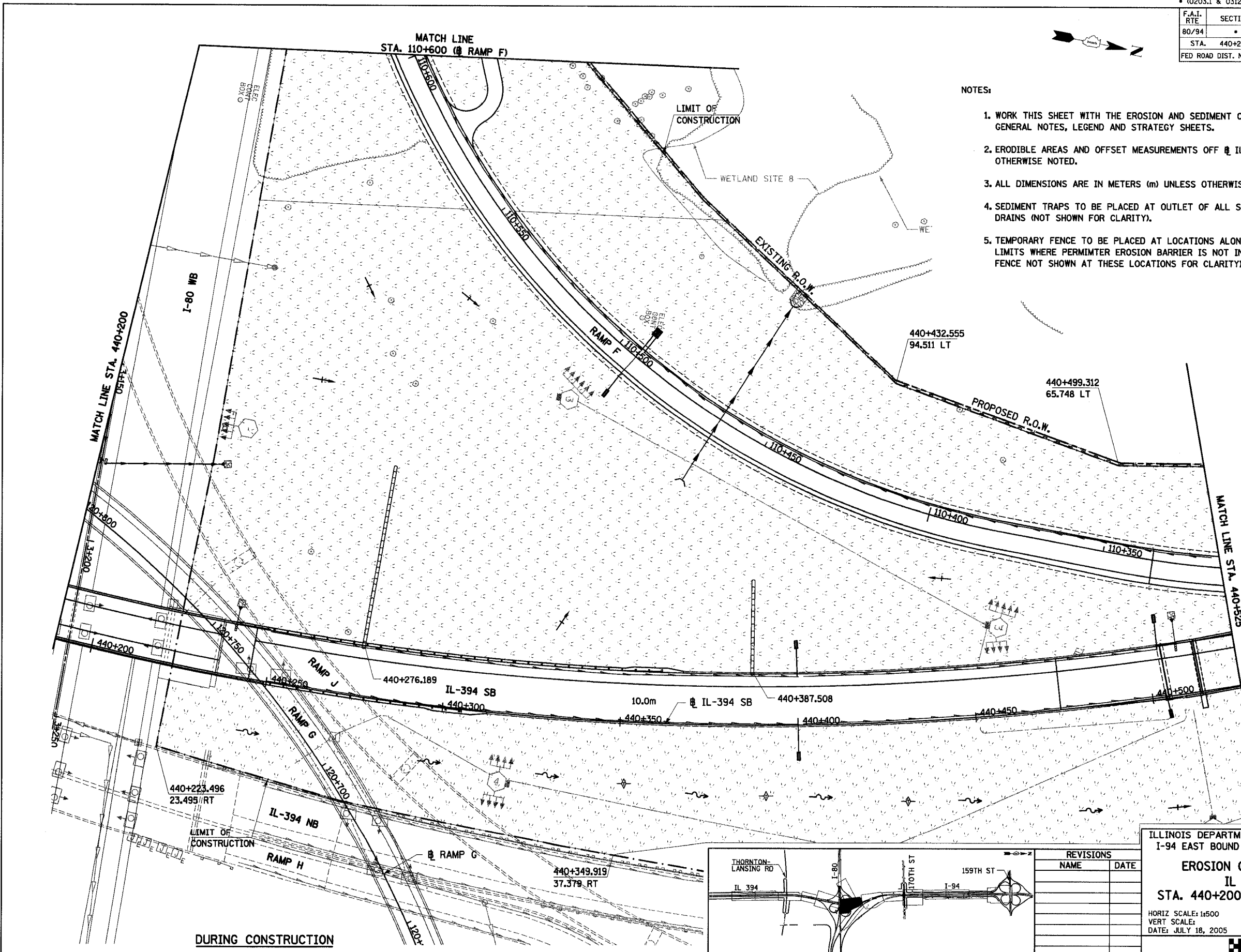


F.A.I. RTE	SECTION	COUNTY	TOTAL SHEETS	SHEET NO.
80/94	*	COOK	870	401
STA. 440+200		TO STA. 440+525		
FED ROAD DIST. NO.		ILLINOIS FED. AID PROJECT		



- NOTES:
1. WORK THIS SHEET WITH THE EROSION AND SEDIMENT CONTROL GENERAL NOTES, LEGEND AND STRATEGY SHEETS.
 2. ERODIBLE AREAS AND OFFSET MEASUREMENTS OFF @ IL-394 SB UNLESS OTHERWISE NOTED.
 3. ALL DIMENSIONS ARE IN METERS (m) UNLESS OTHERWISE NOTED.
 4. SEDIMENT TRAPS TO BE PLACED AT OUTLET OF ALL SLOPE DRAINS (NOT SHOWN FOR CLARITY).
 5. TEMPORARY FENCE TO BE PLACED AT LOCATIONS ALONG ALL CONSTRUCTION LIMITS WHERE PERIMETER EROSION BARRIER IS NOT INDICATED (TEMPORARY FENCE NOT SHOWN AT THESE LOCATIONS FOR CLARITY).

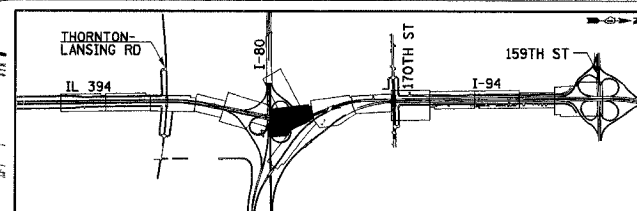
J:\34562\cadd\11\ods\Contract\19_SB\ec\190144a.dgn
kfox 12-JUL-2005 11:02

EC-20

ILLINOIS DEPARTMENT OF TRANSPORTATION
I-94 EAST BOUND / IL 394 SOUTH BOUND

EROSION CONTROL PLAN
IL 394 SB
STA. 440+200 TO STA. 440+525

HORIZ SCALE: 1:500
VERT SCALE:
DATE: JULY 18, 2005
DRAWN BY: JPH
CHECKED BY: MAM



REVISIONS	
NAME	DATE