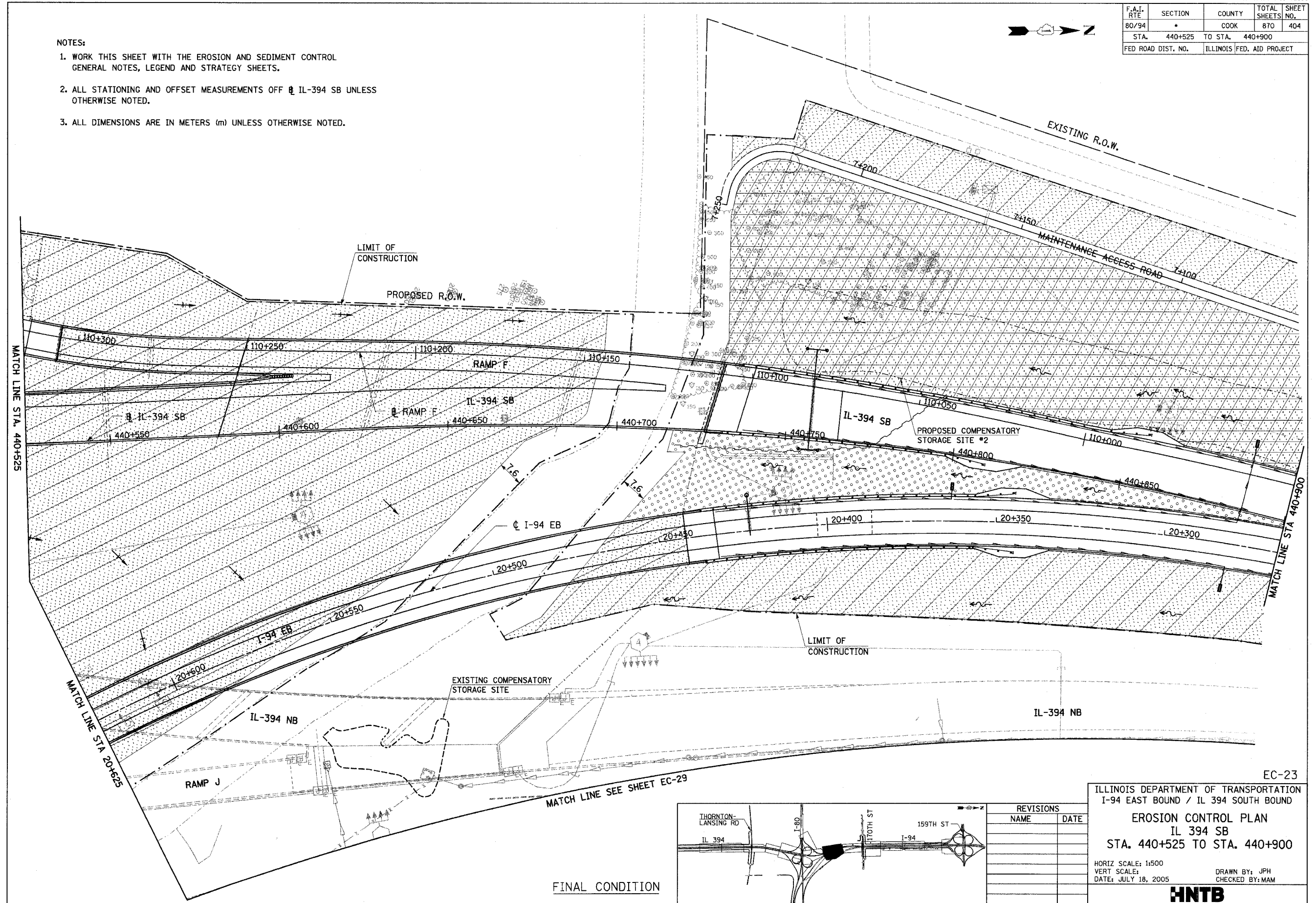
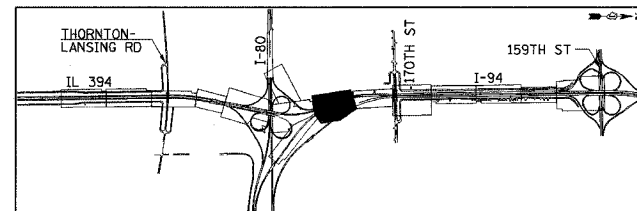


|                    |                           |         |              |           |
|--------------------|---------------------------|---------|--------------|-----------|
| F.A.I. RTE         | SECTION                   | COUNTY  | TOTAL SHEETS | SHEET NO. |
| 80/94              | *                         | COOK    | 870          | 404       |
| STA.               | 440+525                   | TO STA. | 440+900      |           |
| FED ROAD DIST. NO. | ILLINOIS FED. AID PROJECT |         |              |           |

- NOTES:
1. WORK THIS SHEET WITH THE EROSION AND SEDIMENT CONTROL GENERAL NOTES, LEGEND AND STRATEGY SHEETS.
  2. ALL STATIONING AND OFFSET MEASUREMENTS OFF @ IL-394 SB UNLESS OTHERWISE NOTED.
  3. ALL DIMENSIONS ARE IN METERS (m) UNLESS OTHERWISE NOTED.



FINAL CONDITION



| REVISIONS |      |
|-----------|------|
| NAME      | DATE |
|           |      |
|           |      |
|           |      |
|           |      |
|           |      |

EC-23  
 ILLINOIS DEPARTMENT OF TRANSPORTATION  
 I-94 EAST BOUND / IL 394 SOUTH BOUND  
**EROSION CONTROL PLAN**  
 IL 394 SB  
 STA. 440+525 TO STA. 440+900  
 HORIZ SCALE: 1:500  
 VERT SCALE:  
 DATE: JULY 18, 2005  
 DRAWN BY: JPH  
 CHECKED BY: MAM  
**HNTB**