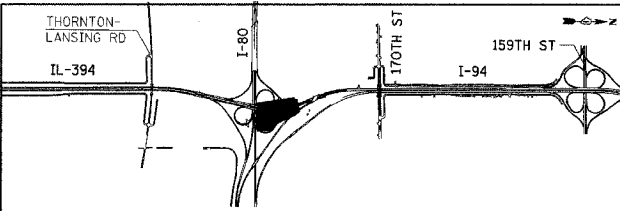
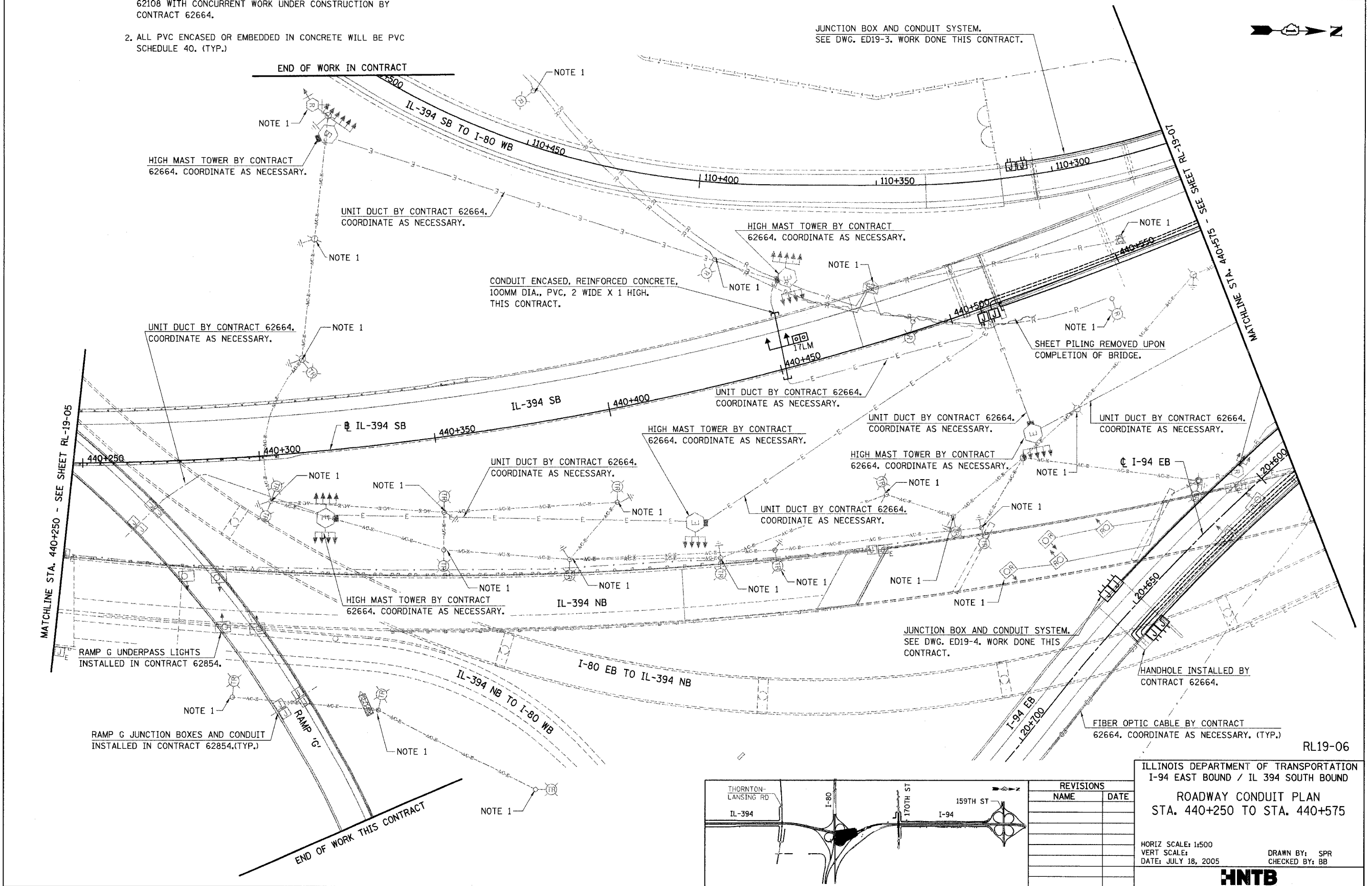


F.A.I. RTE	SECTION	COUNTY	TOTAL SHEETS	SHEET NO.
80/94	*	COOK	870	422
STA.		TO STA.		
FED ROAD DIST. NO.		ILLINOIS FED. AID PROJECT		

NOTES:

1. THIS ITEM IS INSTALLED AND REMOVED DURING CONTRACT 62108 WITH CONCURRENT WORK UNDER CONSTRUCTION BY CONTRACT 62664.
2. ALL PVC ENCASED OR EMBEDDED IN CONCRETE WILL BE PVC SCHEDULE 40. (TYP.)



REVISIONS	
NAME	DATE

ILLINOIS DEPARTMENT OF TRANSPORTATION
 I-94 EAST BOUND / IL 394 SOUTH BOUND
ROADWAY CONDUIT PLAN
 STA. 440+250 TO STA. 440+575

HORIZ SCALE: 1:500
 VERT SCALE: 1:500
 DATE: JULY 18, 2005
 DRAWN BY: SPR
 CHECKED BY: BB

HNTB