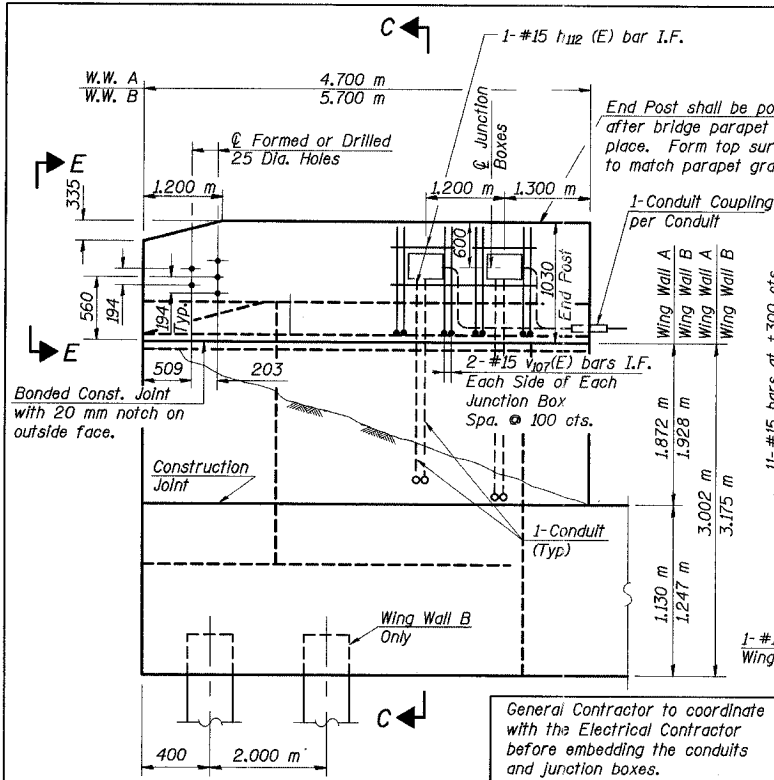


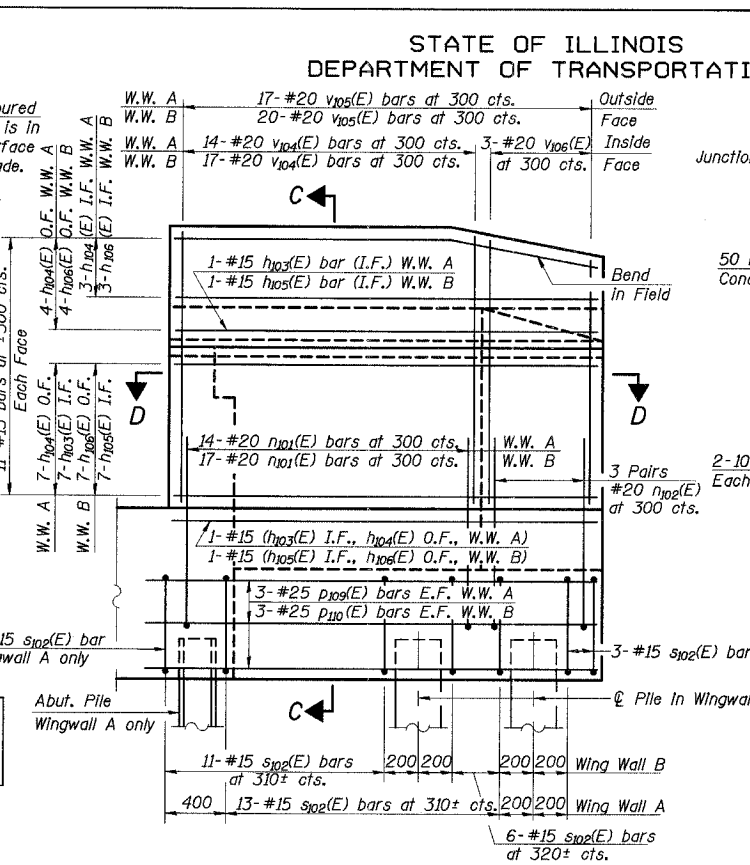
STATE OF ILLINOIS
DEPARTMENT OF TRANSPORTATION

ROUTE NO.	SECTION	COUNTY	TOTAL SHEETS	SHEET NO.	SHEET NO. 23
F. A. I. 80/94		COOK	870	465	29 SHEETS
FED. ROAD DIST. NO. 1 ILLINOIS FEEL. AID PROJECT -					
ILL. (0203.1 & 0312-708W) R-3 CONTRACT NO. 62108					



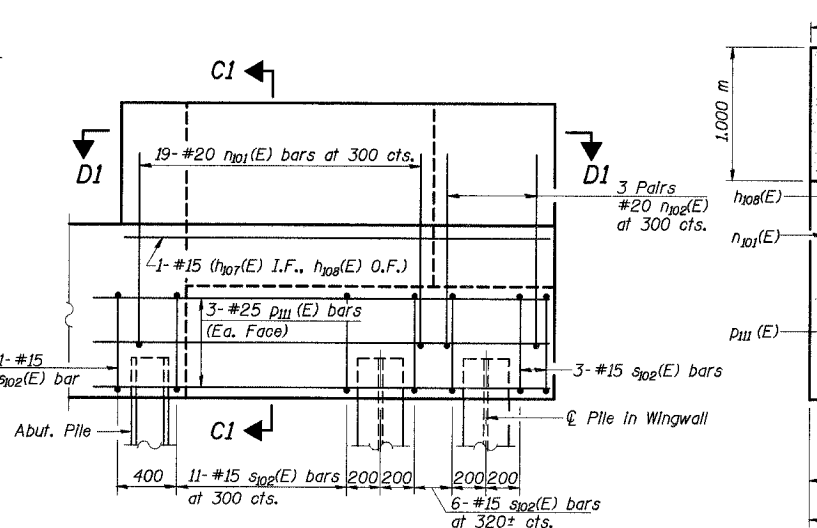
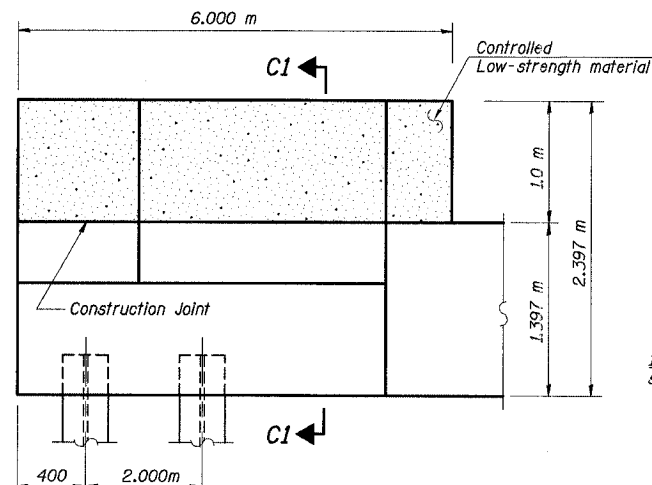
WING WALL A & B ELEVATION

Note: Showing Dimensions and Junction Box and Conduit Details
1. Cut 1- $v_{104}(E)$ bar as required to clear junction box.
2. Place $h_{112}(E)$ and $v_{106}(E)$ bars at 50 mm clear from junction box.



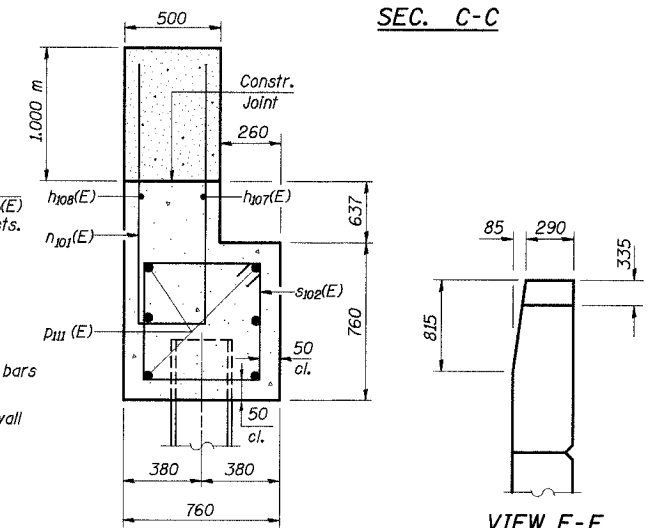
WING WALL A & B ELEVATION

Showing Reinforcement (Junction Box Reinforcement shown in other Elevation View)



WING WALL C ELEVATION

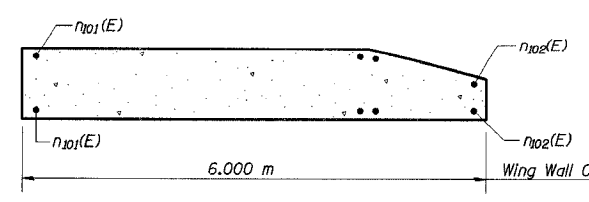
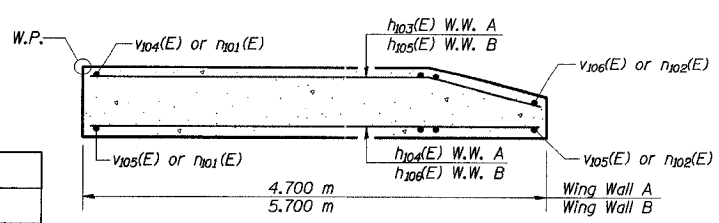
Showing Reinforcement



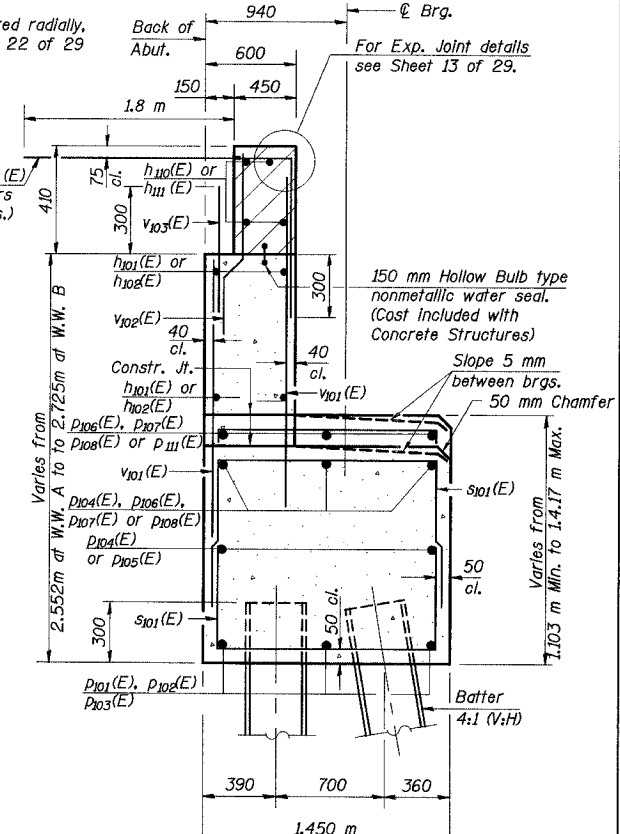
SEC. C1-C1

- Notes:
1. Work this sheet with Sheet 22 & 24 of 29.
 2. Hatched area to be poured after superstructure forms have been removed. Quantity of concrete included with Concrete Superstructure.
 3. For details of Junction Box and method of payment, see Electrical Drawings.
 4. For method of payment of conduit, see Electrical Drawings.
 5. Space reinforcement in cap to clear anchor bolts.
 6. Pour steps monolithically with cap.
 7. See Sheet 24 of 29 for Pile Encasement Detail.

DESIGNED	JFA
CHECKED	JJK
DRAWN	LK
CHECKED	JJK/JFA



SEC. D1-D1



J:\Benchamps\EA\34562\CAD\00\B\SN_2796\CD\CTR_19_2796\abi190804s_2796.dgn
08-JUL-2005 13:56

ILLINOIS DEPARTMENT OF TRANSPORTATION
I-94 EAST BOUND / IL 394 SOUTH BOUND
NORTH ABUTMENT DETAILS
SB ILLINOIS ROUTE 394 OVER INTERSTATE 80
F.A.P. 332 SECTION (0203.1 & 0312-708W) R-3
COOK COUNTY
STA. 440+193.335 STRUCTURE NO. 016-2796
DATE 07/18/05
SCALE ---

HNTB