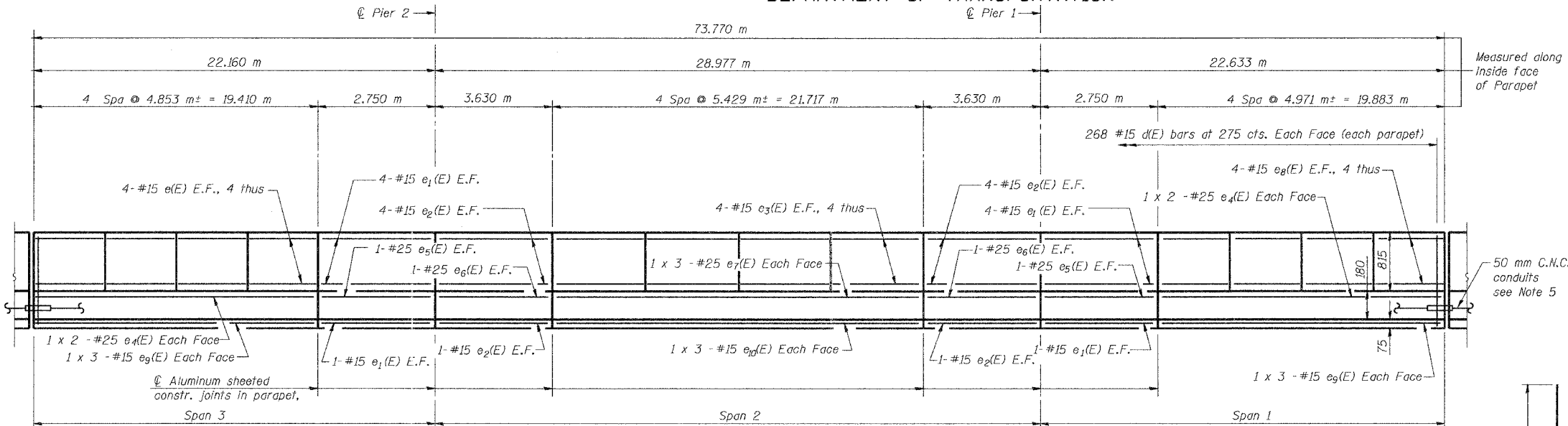


STATE OF ILLINOIS
DEPARTMENT OF TRANSPORTATION

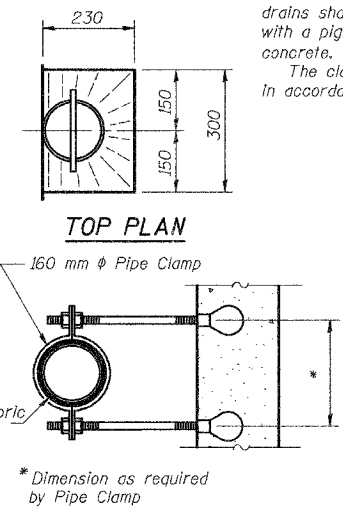
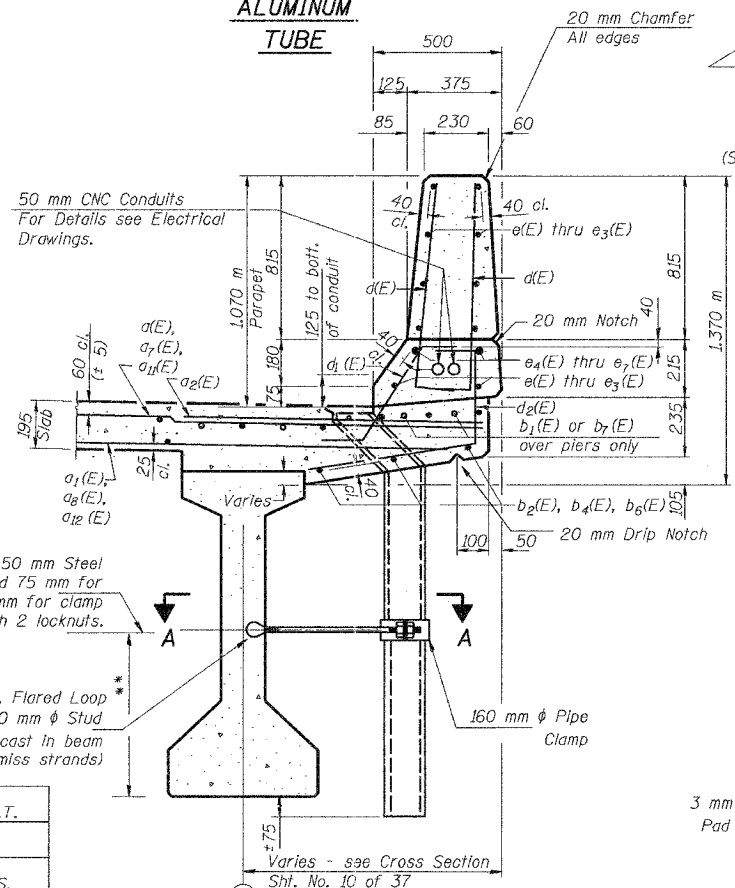
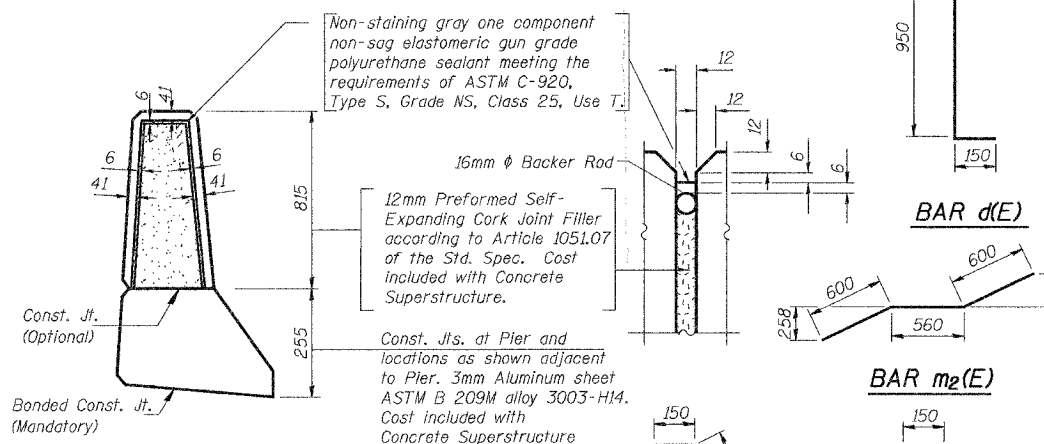
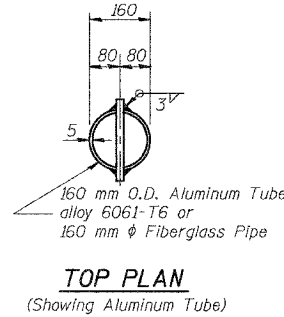
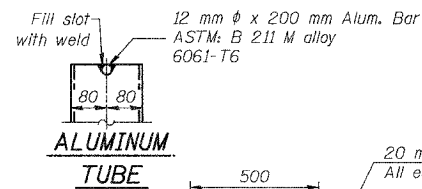
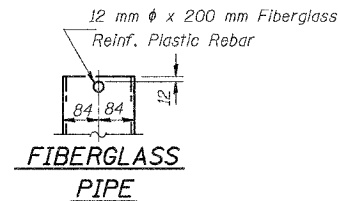
ROUTE NO.	SECTION	COUNTY	TOTAL SHEETS	SHEET NO.
F.A.I. 80/94		COOK	870	486
FED. ROAD DIST. NO. 1		ILLINOIS FED. AID PROJECT-	CONTRACT # 62108	
SECTION (0203.1 & 0312-708W) R-3		SUPERSTRUCTURE		

SHEET NO. 13
37 SHEETS



**SUPERSTRUCTURE
BILL OF MATERIAL**

Bar No.	Size	Length	Shape	
a1(E)	#15	5.12		
a2(E)	#20	1.20		
a3(E)	#25	7.61		
a4(E)	#25	8.42		
a5(E)	#15	8.52		
a6(E)	#15	5.99		
a7(E)	#15	5.42		
a8(E)	#15	8.05		
a9(E)	#15	8.99		
a10(E)	#15	6.32		
a11(E)	#15	5.54		
a12(E)	95	15	8.28	
a13(E)	#15	9.23		
a14(E)	#15	6.50		
a15(E)	#20	1.51		
a16(E)	#20	1.73		
a17(E)	#20	0.76		
a18(E)	#20	0.87		
a19(E)	#15	0.60		
b(E)	#15	8.05		
b1(E)	#25	11.60		
b2(E)	#15	6.16		
b3(E)	#15	7.76		
b4(E)	#15	6.31		
b5(E)	#15	7.88		
b6(E)	#15	6.04		
b7(E)	#25	12.60		
d(E)	#15	1.10		
d1(E)	#15	0.80		
d2(E)	#15	1.12		
e(E)	#15	4.77		
e1(E)	#15	2.67		
e2(E)	#15	3.55		
e3(E)	#15	5.35		
e4(E)	#25	10.47		
e5(E)	#25	2.67		
e6(E)	#25	3.55		
e7(E)	#25	7.94		
e8(E)	#15	4.89		
e9(E)	#15	6.96		
e10(E)	#15	7.58		
m(E)	#15	1.57		
m1(E)	#20	1.16		
m2(E)	#25	1.76		
m3(E)	#15	1.66		
m4(E)	#20	1.24		
m5(E)	#15	0.85		
m6(E)	#15	0.81		
m7(E)	#20	0.58		
m8(E)	#20	0.63		
s(E)	#15	3.48		
s1(E)	#15	3.38		
x(E)	#20	2.29		
Reinforcement Bars, Epoxy Coated			kg	37,280
Concrete Superstructure			m ³	267.9



- Notes:
- Work this sheet with Sheet No. 9 Thru 12 of 37.
 - Reinforcement bars designated (E) shall be epoxy coated.
 - Bars indicated thus "33 x 9 - #15 etc." indicates 33 lines of bars with 9 lengths per line.
 - Place bars d1(E) and d2(E) to miss the Aluminum Sheeted Joint Location in Parapets
 - For method of payment of conduits, see Electrical Drawings.
 - All dimensions are in millimeters (mm) except as noted.
- Min. bar laps:
- #15 bars - 510 mm
 - #20 bars - 640 mm
 - #25 bars - 1060 mm

DESIGNED	M.R./ H.T.
CHECKED	H.T.
DRAWN	J.B./ J.S.
CHECKED	H.T./ M.R.

ILLINOIS DEPARTMENT OF TRANSPORTATION
I-94/IL 394 SOUTH BOUND
DECK AND PARAPET DETAILS
SB IL. ROUTE 394 OVER CANADIAN NATIONAL RR
F.A.P. 332 SECTION (0203.1 & 0312-708W) R-3
COOK COUNTY
STA. 39+752.246 S.N. 016-2798 (INSIDE LANES)
DATE: July 18, 2005
SCALE: NONE

Soodan & Associates, Inc.
100 North LaSalle Street, Suite 1800
Chicago, Illinois 60602