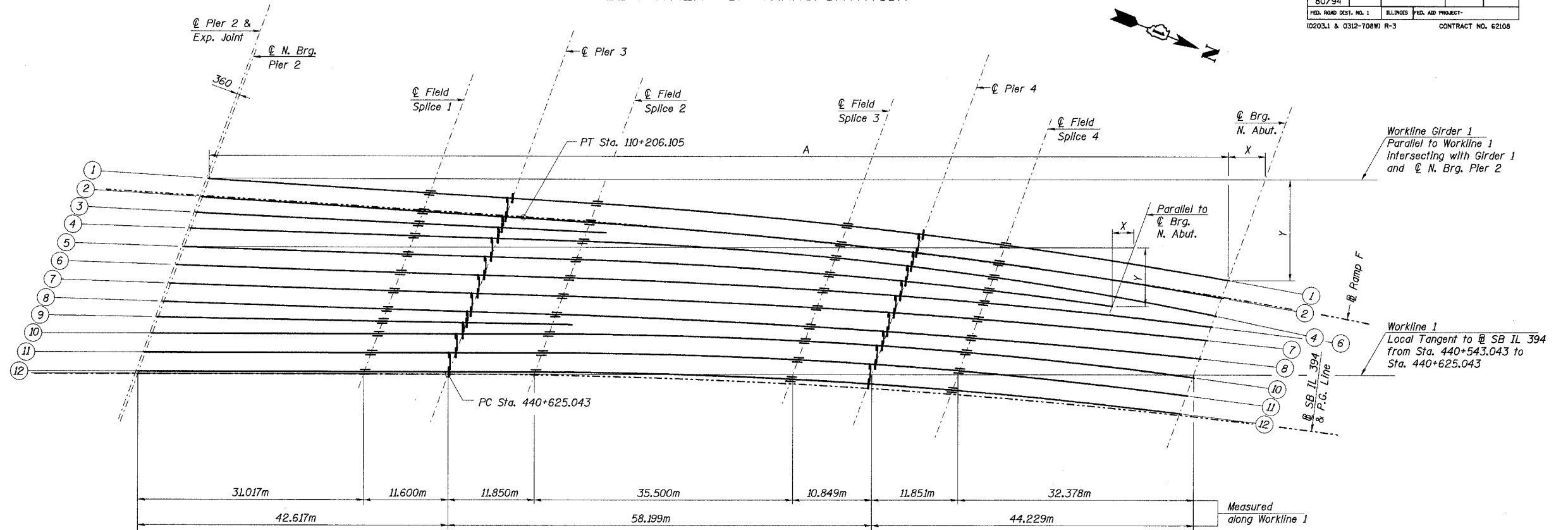


STATE OF ILLINOIS  
DEPARTMENT OF TRANSPORTATION

ROUTE NO.	SECTION	COUNTY	TOTAL SHEETS	SHEET NO.	SHEET NO. 36 91 SHEETS
F. A. I. 80/94		COOK	870	550	
FED. ROAD DIST. NO. 1		ILLINOIS FED. AID PROJECT-			
(02033.1 & 0312-708W) R-3		CONTRACT NO. 62108			



GIRDER LAYOUT

LAYOUT DIMENSIONS (Length in Meters)

Girder	Station**	N. Brg. Pier 2			FS 1			Pier 3			FS 2			FS 3			Pier 4			FS 4			Brg. N. Abut. or End of G5		
		Sta. 440+582.426			Sta. 440+613.443			Sta. 440+625.043			Sta. 440+636.866			Sta. 440+671.980			Sta. 440+682.627			Sta. 440+694.217			Sta. 440+725.679		
		A	X	Y	A	X	Y	A	X	Y	A	X	Y	A	X	Y	A	X	Y	A	X	Y	A	X	Y
1	750.377	0.000	0.000	0.000	31.017	0.697	1.914	42.617	0.957	2.630	54.467	1.224	3.362	89.967	2.305	6.332	100.816	2.746	7.545	112.667	3.287	9.032	145.045	5.072	13.935
2	768.670	0.000	0.000	0.000	31.017	0.697	1.914	42.617	0.957	2.630	54.467	1.224	3.362	89.967	2.298	6.313	100.816	2.735	7.514	112.667	3.270	8.983	145.045	5.030	13.819
3	-	0.000	0.000	0.000	31.017	0.524	1.441	42.617	0.721	1.979	-	-	-	-	-	-	-	-	-	-	-	-	-	-	-
4	503.863	0.000	0.000	0.000	31.017	0.352	0.967	42.617	0.484	1.329	54.467	0.618	1.698	89.967	1.452	3.990	100.816	1.875	5.151	112.667	2.424	6.659	145.045	4.377	12.026
5	661.475	0.000	0.000	0.000	31.017	0.352	0.967	42.617	0.484	1.329	54.467	0.618	1.698	89.967	1.351	3.712	100.816	1.704	4.682	112.667	2.157	5.927	127.465	2.966	8.150
6	993.453	0.000	0.000	0.000	31.017	0.352	0.967	42.617	0.484	1.329	54.467	0.618	1.698	89.967	1.242	3.412	100.816	1.520	4.175	112.667	1.868	5.133	145.045	3.062	8.412
7	1233.121	0.000	0.000	0.000	31.017	0.352	0.967	42.617	0.484	1.329	54.467	0.618	1.698	89.967	1.199	3.295	100.816	1.447	3.977	112.667	1.755	4.823	145.045	2.792	7.671
8	1242.425	0.000	0.000	0.000	31.017	0.352	0.967	42.617	0.484	1.329	54.467	0.618	1.698	89.967	1.198	3.292	100.816	1.445	3.970	112.667	1.752	4.813	145.045	2.784	7.648
9	-	0.000	0.000	0.000	31.017	0.176	0.482	42.617	0.241	0.663	-	-	-	-	-	-	-	-	-	-	-	-	-	-	-
10	672.128	0.000	0.000	0.000	31.017	0.000	0.000	42.617	0.000	0.000	54.467	0.000	0.000	89.967	0.335	0.921	100.816	0.568	1.561	112.667	0.891	2.600	145.045	2.128	5.845
11	690.950	0.000	0.000	0.000	31.017	0.000	0.000	42.617	0.000	0.000	54.467	0.000	0.000	89.967	0.326	0.896	100.816	0.553	1.519	112.667	0.867	2.383	145.045	2.072	5.692
12	709.488	0.000	0.000	0.000	31.017	0.000	0.000	42.617	0.000	0.000	54.467	0.000	0.000	89.967	0.318	0.873	100.816	0.539	1.481	112.667	0.845	2.322	145.045	2.020	5.549

DESIGNED	JY
CHECKED	MEA
DRAWN	LK
CHECKED	MEA

\* Girder 3 and 9 are straight Girders. All the remaining Girders are straight from Pier 2 to Field Splice 2 and curved from Field Splice 2 to N. Abut. with their Radial shown in the table.

\*\* Station along @ SB IL 394.

Note:

- Coordinate system shown for Girder 1. Typical for all Girders with parallel worklines with Workline 1 intersecting with @ Girders and @ N. Brg. Pier 2.
- Work this sheet with Sheet No. 35 of 91.

ILLINOIS DEPARTMENT OF TRANSPORTATION  
I-94 EAST BOUND / IL 394 SOUTH BOUND  
**GIRDER LAYOUT**  
SPANS 3-5 - UNIT 1  
SB IL ROUTE 394 OVER THORN CREEK  
F.A.P. 332 SECTION (02033.1 & 0312-708W) R-3  
COOK COUNTY  
STA. 440+704.350 STRUCTURE NO. 016-2800  
DATE JUL 18, 2005  
SCALE ---  
**HNTB**

J:\Research\02033.1\0312-708W\016-2800\016-2800.ctb 19\_2800\p190124a\_2800.dgn 08-JUL-2005 13:46