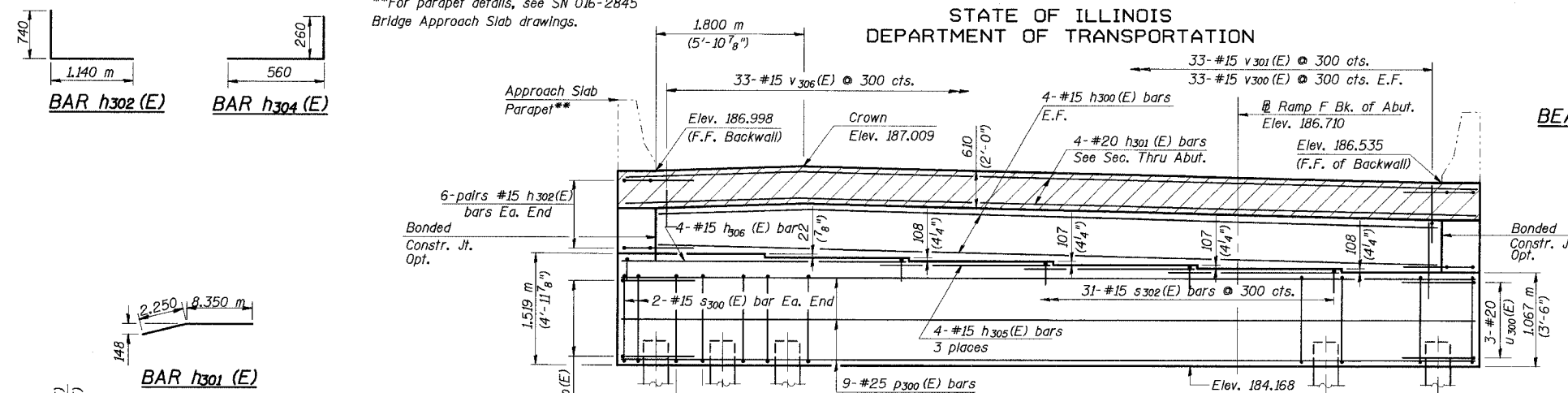


STATE OF ILLINOIS
DEPARTMENT OF TRANSPORTATION

ROUTE NO.	SECTION	COUNTY	TOTAL SHEETS	SHEET NO.	SHEET NO. 68
F. A. I. 80/94		COOK	870	582	91 SHEETS
FED. ROAD DIST. NO. 1 ILLINOIS FED. AID PROJECT-			CONTRACT NO. 62108		
10203.1 & 0312-708W) R-3					

**For parapet details, see SN 016-2845
Bridge Approach Slab drawings.



BEARING SEAT ELEVATIONS (Meters)

Girder	Abut. F
1	185.235
2	185.343
3	185.450
4	185.557
5	185.665
6	185.687

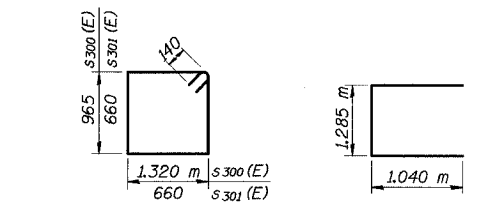
ABUTMENT F BILL OF MATERIAL

Bar	No.	Size	Length (m)	Shape
h300(E)	8	#15	9.600	
h301(E)	4	#20	10.600	
h302(E)	24	#15	1.800	
h303(E)	20	#15	4.015	
h304(E)	33	#15	0.820	
h305(E)	12	#15	2.400	
h306(E)	4	#15	3.460	
h300(E)	15	#20	4.020	
h301(E)	15	#20	3.120	
p300(E)	9	#25	10.600	
p301(E)	6	#25	4.015	
s300(E)	52	#15	4.850	
s301(E)	36	#15	2.920	
s302(E)	31	#15	2.220	
u300(E)	7	#20	3.365	
v300(E)	66	#15	1.650	
v301(E)	33	#15	1.375	
v302(E)	4	#20	2.050	
v303(E)	26	#20	0.950	
v304(E)	4	#20	2.115	
v305(E)	33	#15	0.600	

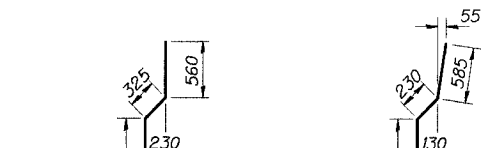
BAR h301(E)



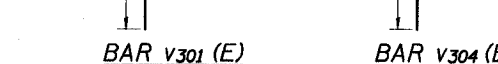
BAR n300(E) & n301(E)



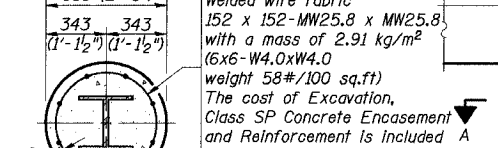
BARS s300(E) & s301(E)



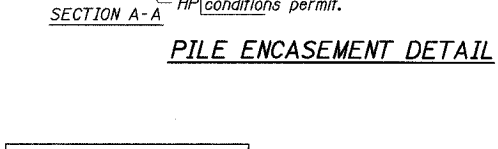
BAR u300(E)



BAR v301(E)



BAR v304(E)

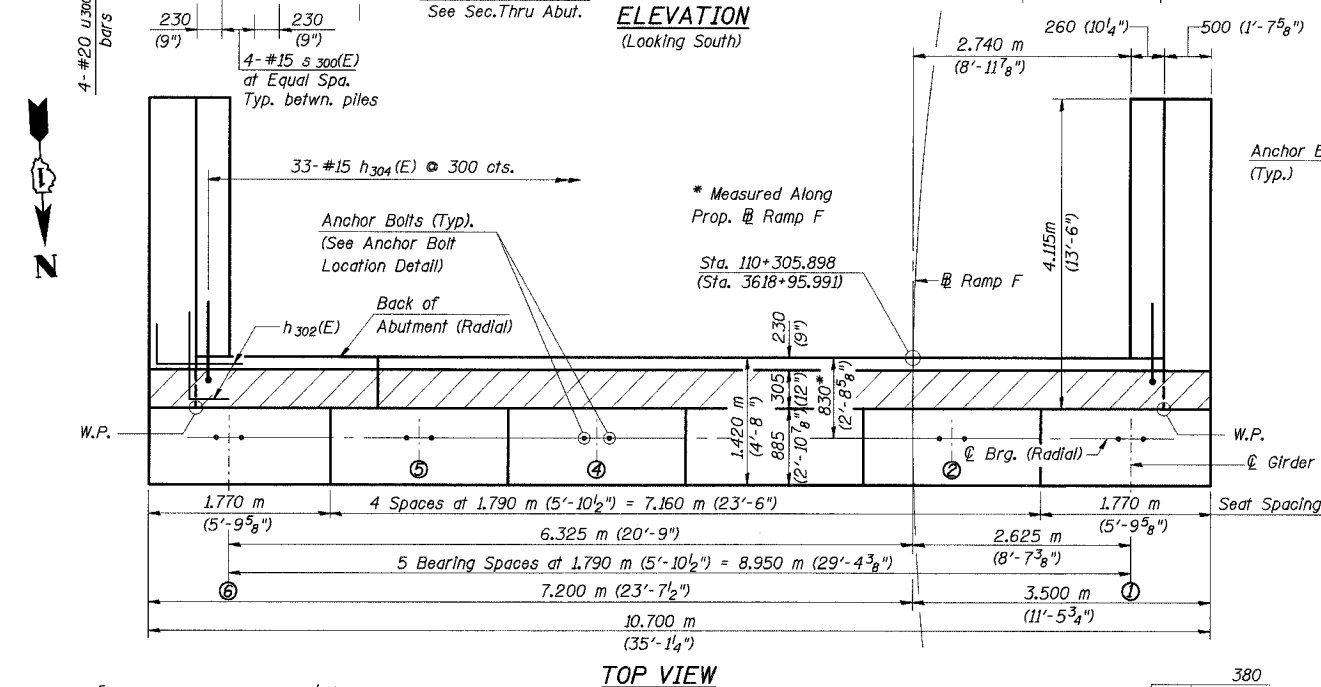


PILE ENCASEMENT DETAIL

Welded wire fabric 152 x 152-MW25.8 x MW25.8 with a mass of 2.91 kg/m² (6x6-W4.0xW4.0 weight 58#/100 sq.ft) The cost of Excavation, Class SP Concrete Encasement and Reinforcement is included with Furnishing Piles. Forms for Encasement may be omitted when soil conditions permit.

900 Class SP Concrete Encasement

DESIGNED	JM
CHECKED	JFA/MEA
DRAWN	JM / LK
CHECKED	JFA/MEA



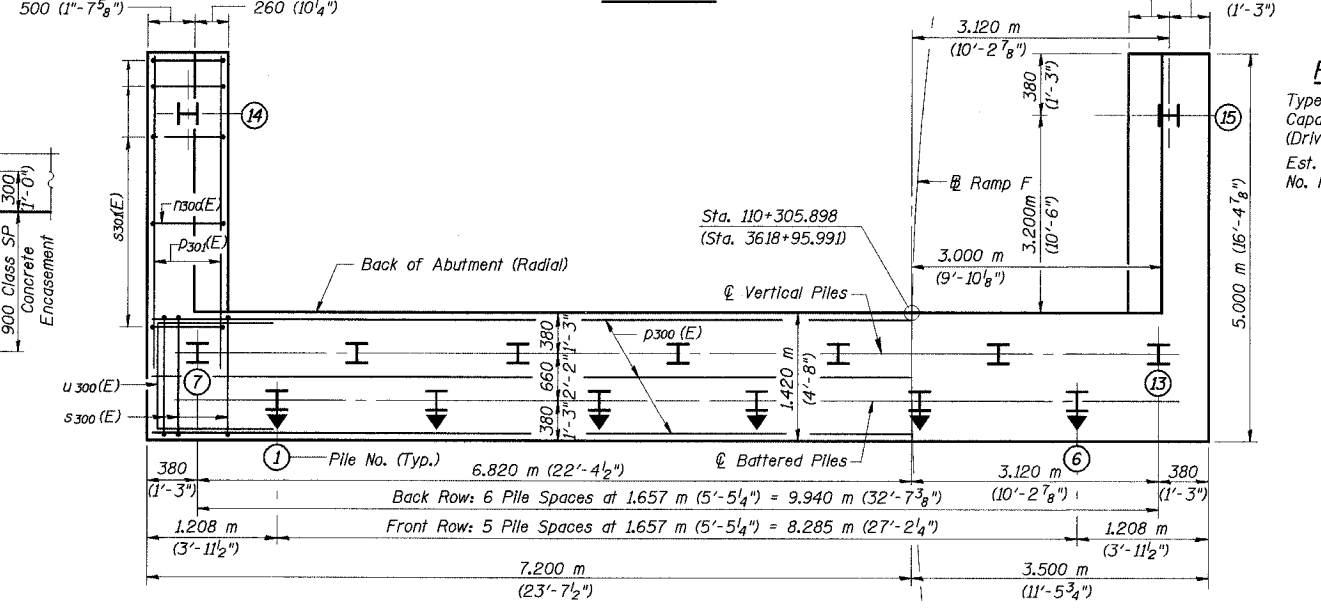
ANCHOR BOLT LOCATION DETAIL



PILE DATA

Type: HP 360x108 (HP14x73)
Capacity: 650 kN (146 kips)
(Driven to 965 kN (219 kips) Bearing)
Est. Length: 17.02 m (55'-10 1/8")
No. Required: 15 (Includes 1 test pile)

- Notes:
1. Work this sheet with Sheet 69 of 91.
 2. All dimensions are in millimeters (mm) except as noted.
 3. Reinforcement bars designated (E) shall be epoxy coated.
 4. Information shown in parentheses is in English units.
 5. For Anchor Bolt Installation Detail see Sheet 60 of 91.
 6. For Ramp F base line curve data see sheet 3 of 91.



ILLINOIS DEPARTMENT OF TRANSPORTATION
I-94 EAST BOUND / IL 394 SOUTH BOUND

ABUTMENT F

RAMP F OVER THORN CREEK
F.A.P. 332 SECTION (0203.1 & 0312-708W) R-3
COOK COUNTY
STA. 440+704.350 STRUCTURE NO. 016-2845

DATE JUL 18, 2005
SCALE ---

HNTB

J:\m... at 34562\CADD\1\SN_2800\cda\CTRL_19_2800.dwg, 18-AUG-2005 17:46