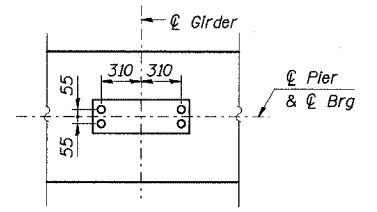
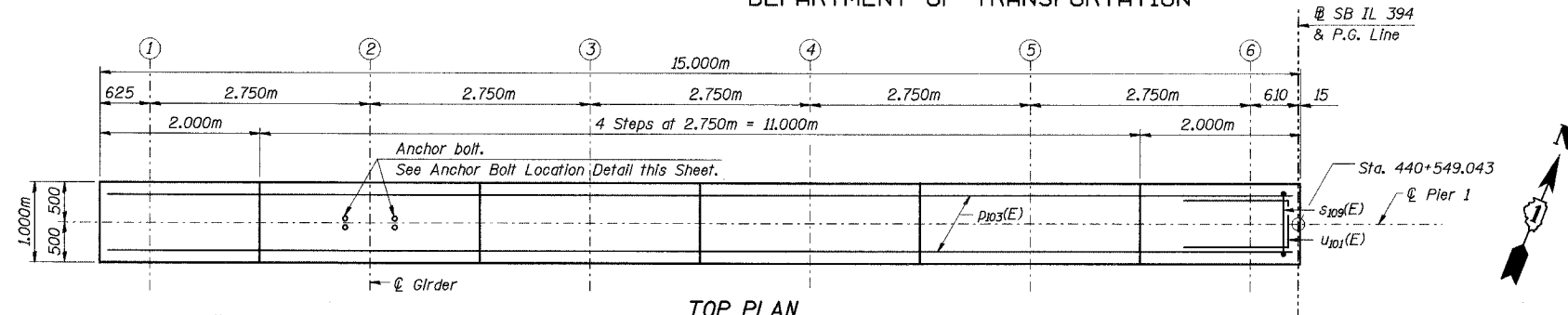
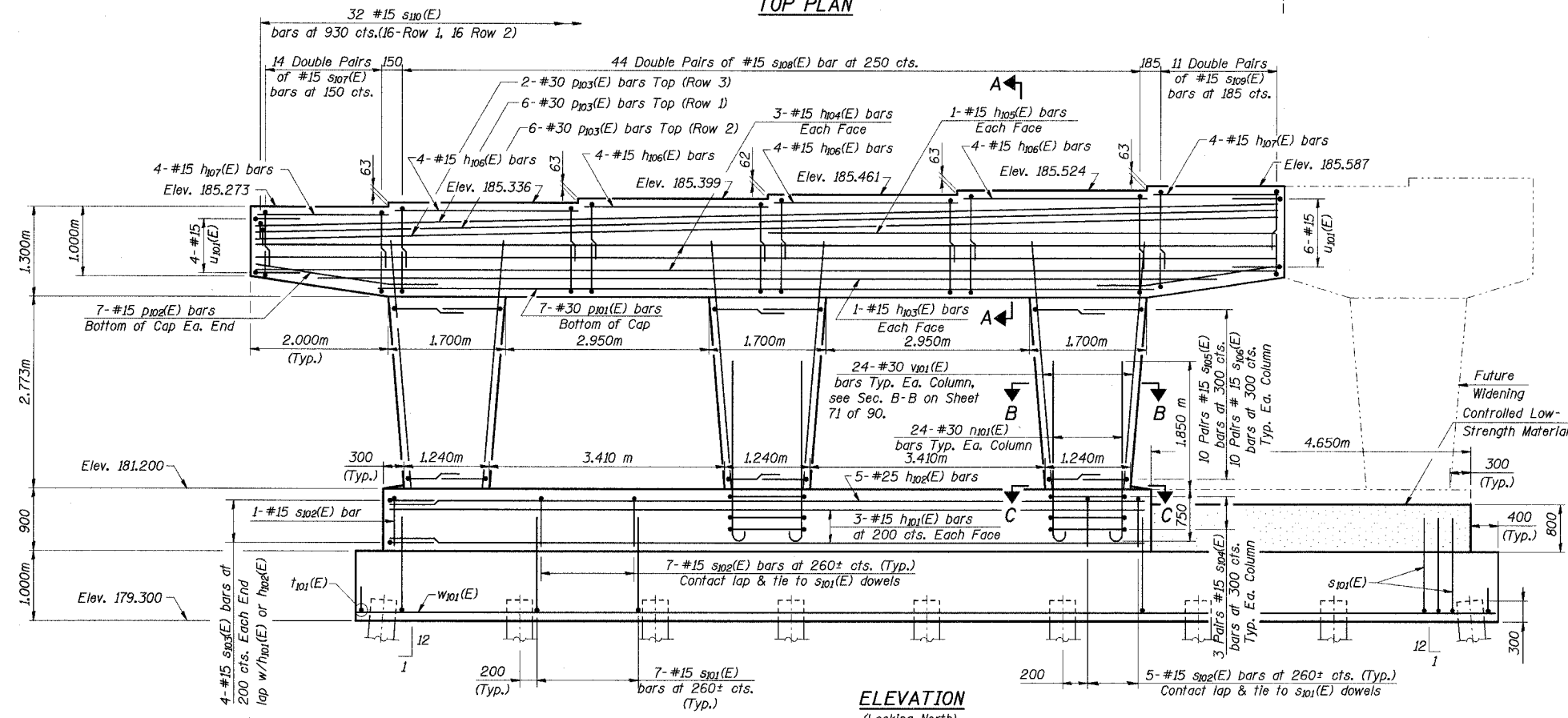


STATE OF ILLINOIS
DEPARTMENT OF TRANSPORTATION

ROUTE NO.	SECTION	COUNTY	TOTAL SHEETS	SHEET NO.	SHEET NO. 70 91 SHEETS
F. A. I. 80/94	*	COOK	870	584	
FED. ROAD DIST. NO. 1	ILLINOIS	FED. AID PROJECT-			
(02033.1 & 0312-708W) R-3		CONTRACT NO. 62108			

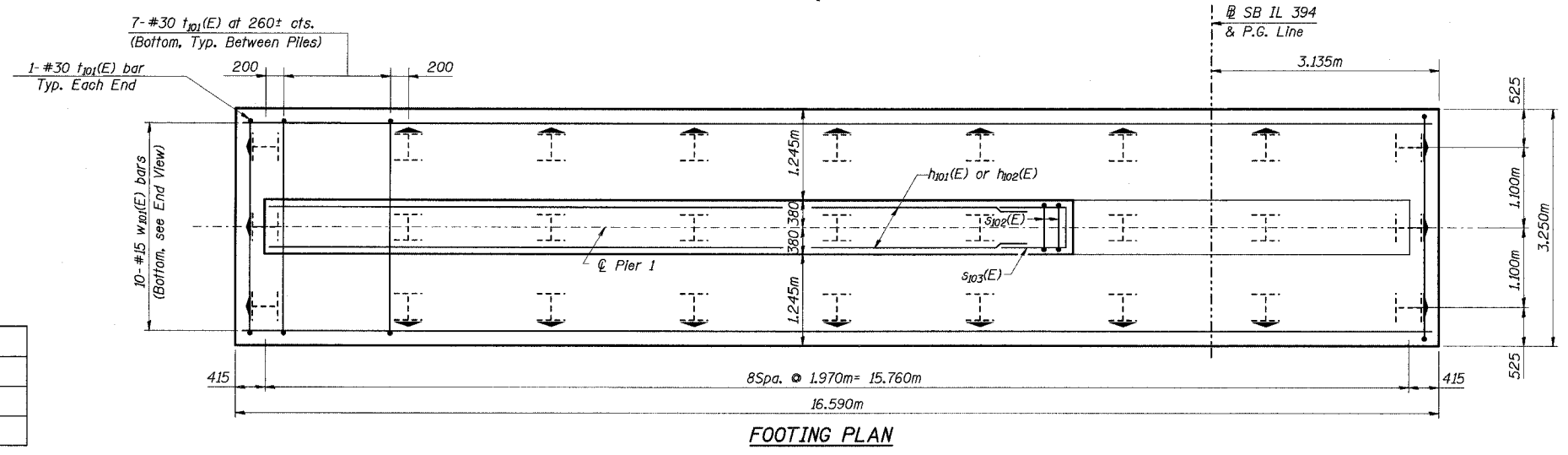


ANCHOR BOLT LOCATION DETAIL (TYP.)



- Notes:
1. Work this Sheet with Sheet No. 71 of 91.
 2. Space reinforcement in cap to miss anchor bolts.
 3. Pour steps monolithically with cap.
 4. All dimensions are in millimeters (mm) except as noted.
 5. Min bar laps (Unless otherwise shown):
#15 bars - 710 mm
#20 bars - 890 mm
#25 bars - 1480 mm
#30 bars - 2070 mm
 6. Reinforcement Bars Designated (E) shall be epoxy coated.

↑ Indicate Pile Batter.



DESIGNED	MAS
CHECKED	JFA
DRAWN	LK
CHECKED	JFA

L:\kalis\JP\34562\CADD\BA\SN_2800\cadd\CTR\19_2800\p1\0114a_2800.dgn
18-AUG-2005 08:23

ILLINOIS DEPARTMENT OF TRANSPORTATION
I-94 EAST BOUND / IL 394 SOUTH BOUND
PIER 1
PLAN & ELEVATION
SB IL ROUTE 394 OVER THORN CREEK
F.A.P. 332 SECTION (02033.1 & 0312-708W) R-3
COOK COUNTY
STA. 440+704.350 STRUCTURE NO. 016-2800
DATE JUL 18, 2005
SCALE ---
HNTB