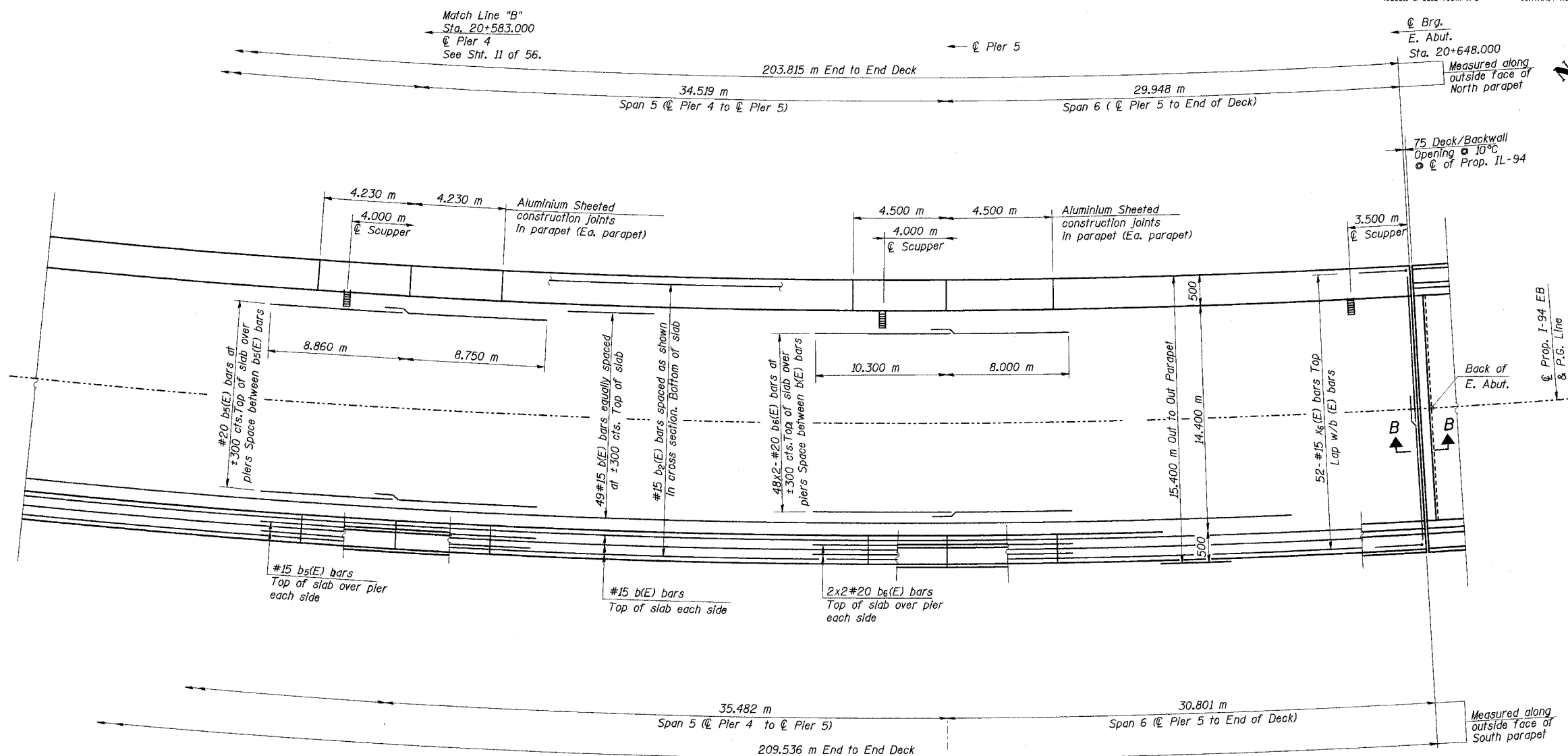
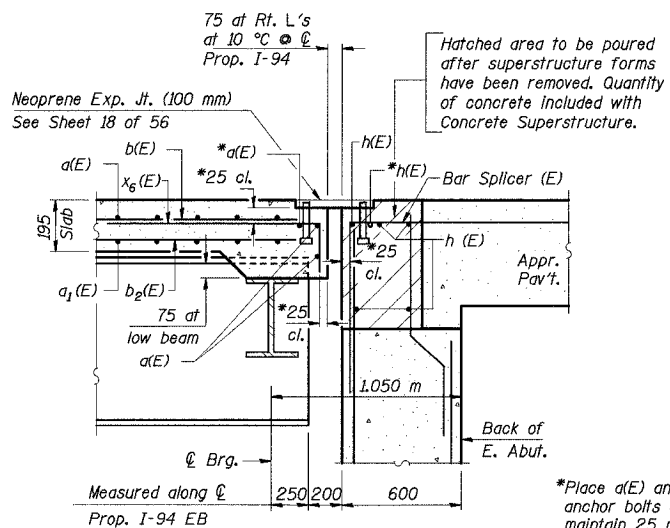


STATE OF ILLINOIS
DEPARTMENT OF TRANSPORTATION

ROUTE NO.	SECTION	COUNTY	TOTAL SHEETS	SHEET NO.	SHEET NO. 12
F. A. I. 80/94	*	COOK	870	622	56 SHEETS
FED. ROAD DIST. NO. 1	ILLINOIS	FED. AID PROJECT-	CONTRACT NO. 62108		



DECK PLAN SPAN 5 & 6



*Place a(E) and h(E) bars in back of anchor bolts as shown if required to maintain 25 mm cl. (+0-3 mm). Anchor bolts should be tied to a(E) and h(E) bars.

NOTES:

1. Work this sheet with Sheet Numbers 10, 11 & 13 of 56 Sheets.
2. Reinforcement bars designated (E) shall be epoxy coated.
3. Bars indicated thus "48 x 9 - #15 cts." indicates 48 lines of bars with 9 lengths per line.
4. All dimensions are in millimeters (mm) except as noted.
5. Place bars d₁(E), d₂(E), d₃(E) to miss the Aluminum Sheeted Joint Location in Parapets.
6. For deck cross section see sht. 13 of 56
7. For parapet reinforcement see sht. 15 & 16 of 56.

MIN. BAR LAPS

#15 bars - 510
#20 bars - 640

DESIGNED	R.A.
CHECKED	M.R.
DRAWN	R.A.
CHECKED	M.R. / H.T.

SECTION B-B

ILLINOIS DEPARTMENT OF TRANSPORTATION
I-94 EAST BOUND / IL 394 SOUTH BOUND
DECK PLAN & DETAILS - SPAN 5 & 6
EB I-94 OVER THORN CREEK
F.A.P. 332 SECTION (0203.1 & 0312-708W) R-3
COOK COUNTY
STA. 20+809.000 STRUCTURE NO. 016-2807
DATE: 7/18/05
SCALE: NTS
Soodan

Soodan & Associates, Inc.
100 North LaSalle Street, Suite 1800
Chicago, Illinois 60602

J:\kin\at\34862\CADD\N\I\N\2807\cadd\CTR\15_2807.dgn
15-AUG-2005 09:47