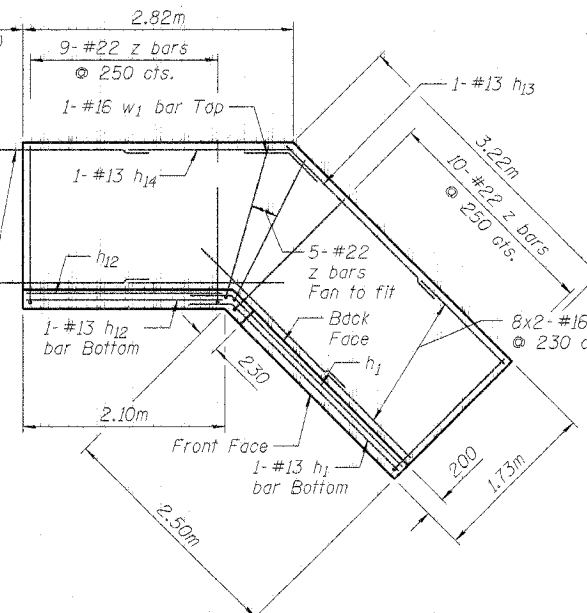
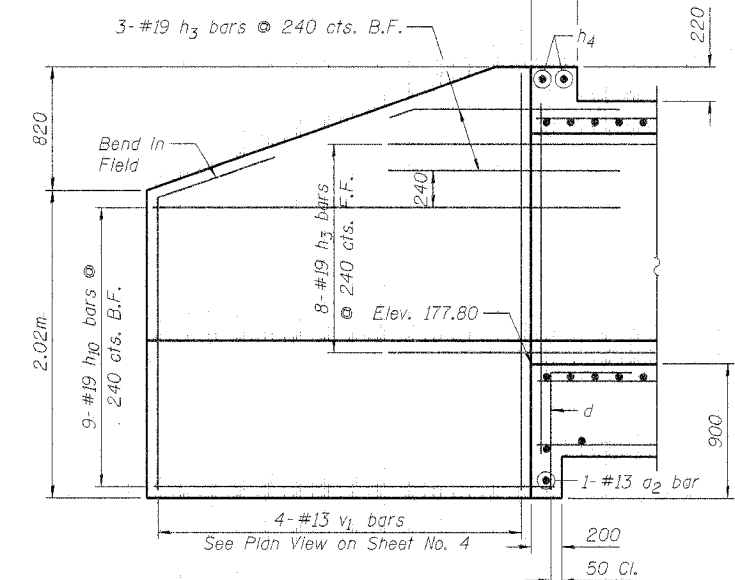


DOWNSTREAM NORTH WINGWALL ELEVATION
WB Reconstruction - For Information Only



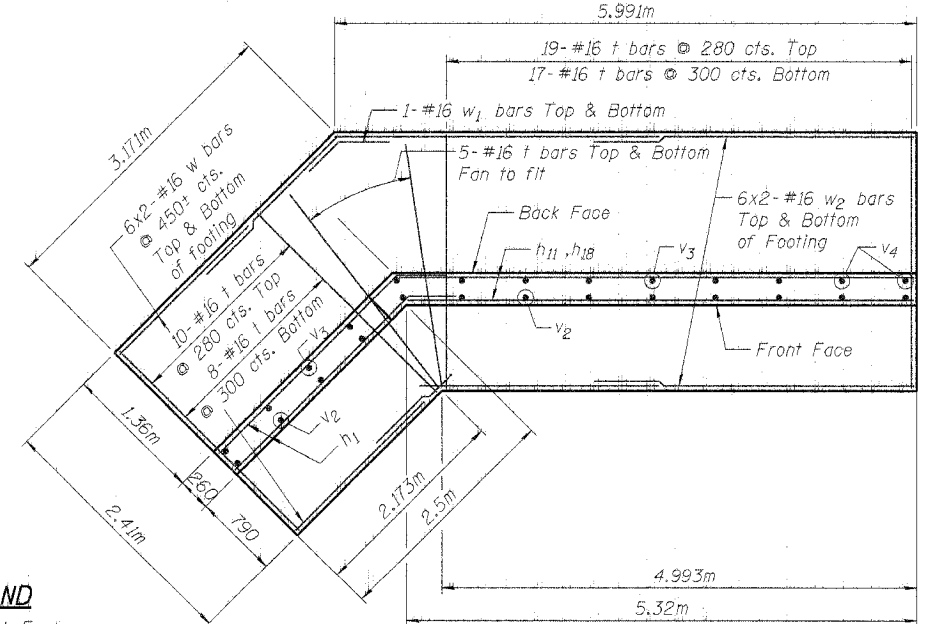
DOWNSTREAM NORTH WINGWALL PLAN
WB Reconstruction - For Information Only



UPSTREAM WINGWALLS ELEVATION

*Order bars full length. Cut in field to fit.

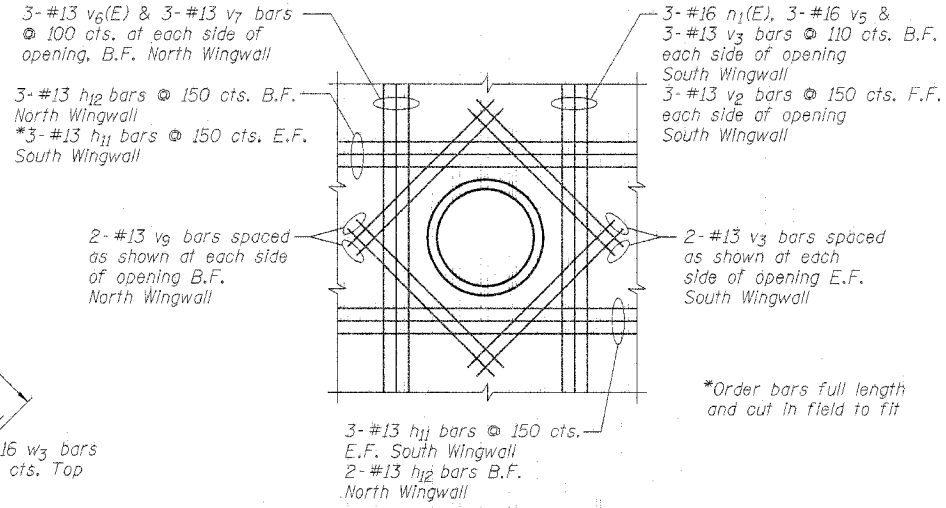
DOWNSTREAM SOUTH WINGWALL ELEVATION
WB Reconstruction - For Information Only



DOWNSTREAM SOUTH WINGWALL PLAN
WB Reconstruction - For Information Only

LEGEND
B.F. = Back Face
F.F. = Front Face
E.F. = Each Face

DESIGNED	PMM
CHECKED	LAS
DRAWN	SAW
CHECKED	LAS



REINFORCEMENT AT SEWER PIPE
WB Reconstruction - For Information Only

Cut horizontal and vertical bars to fit opening and add reinforcement as indicated.

NOTES

- All dimensions are in millimeters (mm) unless noted otherwise.
- Bars indicated thus: 8x2-#16, etc. Indicates 8 lines of bars with 2 lengths per line.
- Reinforcement bars designated (E) shall be epoxy coated.
- Minimum Bar Laps (unless noted otherwise):

	Barrels	Wingwalls
#13 bars	440	550
#16 bars	550	680
#19 bars	670	830
#22 bars	910	1130
#25 bars	1190	1490

ILLINOIS DEPARTMENT OF TRANSPORTATION
FAI ROUTE 80 (INTERSTATE 80/94)
INTERSTATE 294 TO US ROUTE 41
WINGWALL ELEVATIONS & SECTIONS
F.A.I. 94 BOX CULVERT
SECTION (0203.1 & 0312-708W) R-3
COOK COUNTY
STA. 18+934.000
STRUCTURE NO. 016-C012
DATE JULY 18, 2005
SCALE

BRANCO & ZROKA
ENGINEERING, P.C.