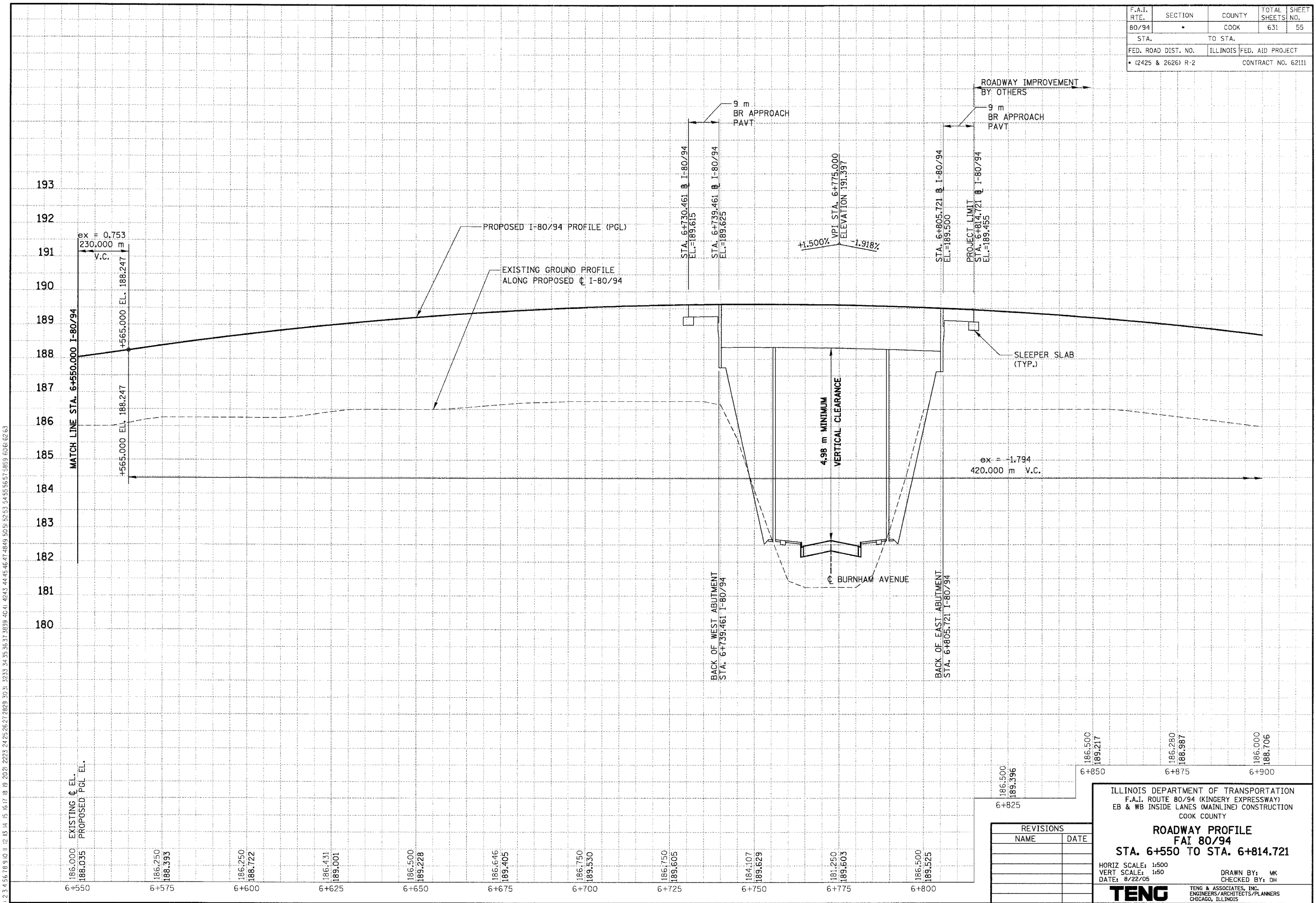


F.A.I. RTE.	SECTION	COUNTY	TOTAL SHEETS	SHEET NO.
80/94		COOK	631	55
STA.		TO STA.		
FED. ROAD DIST. NO.		ILLINOIS	FED. AID PROJECT	
• (2425 & 2626) R-2		CONTRACT NO. 62111		

PRELIMINARY SURVEY	BY	DATE
SURVEY PLOTTED		
NOTE BOOK TEMPLATE		
AREAS CHECKED		
NO.		

ORIGINAL SURVEY	BY	DATE
SURVEY PLOTTED		
NOTE BOOK TEMPLATE		
AREAS CHECKED		
NO.		

-\FRIT002A.DGN, -\AB99002A.DGN, -\FRIT002A.DGN, -\FRIT002A.DGN, -\FRIT002A.DGN
 8-18-2005, 09:08:27 T:\DOCUMENTS\931750\CIVIL\DCN\PI7032A.DGN
 1 2 3 4 5 6 7 8 9 10 11 12 13 14 15 16 17 18 19 20 21 22 23 24 25 26 27 28 29 30 31 32 33 34 35 36 37 38 39 40 41 42 43 44 45 46 47 48 49 50 51 52 53 54 55 56 57 58 59 60 61 62 63
 BALZEKJ



REVISIONS	
NAME	DATE

ILLINOIS DEPARTMENT OF TRANSPORTATION
 F.A.I. ROUTE 80/94 (KINGERY EXPRESSWAY)
 EB & WB INSIDE LANES (MAINLINE) CONSTRUCTION
 COOK COUNTY
ROADWAY PROFILE
FAI 80/94
STA. 6+550 TO STA. 6+814.721
 HORIZ SCALE: 1:500
 VERT SCALE: 1:50
 DATE: 8/22/05
 DRAWN BY: MK
 CHECKED BY: DH
TENG TENG & ASSOCIATES, INC.
 ENGINEERS/ARCHITECTS/PLANNERS
 CHICAGO, ILLINOIS