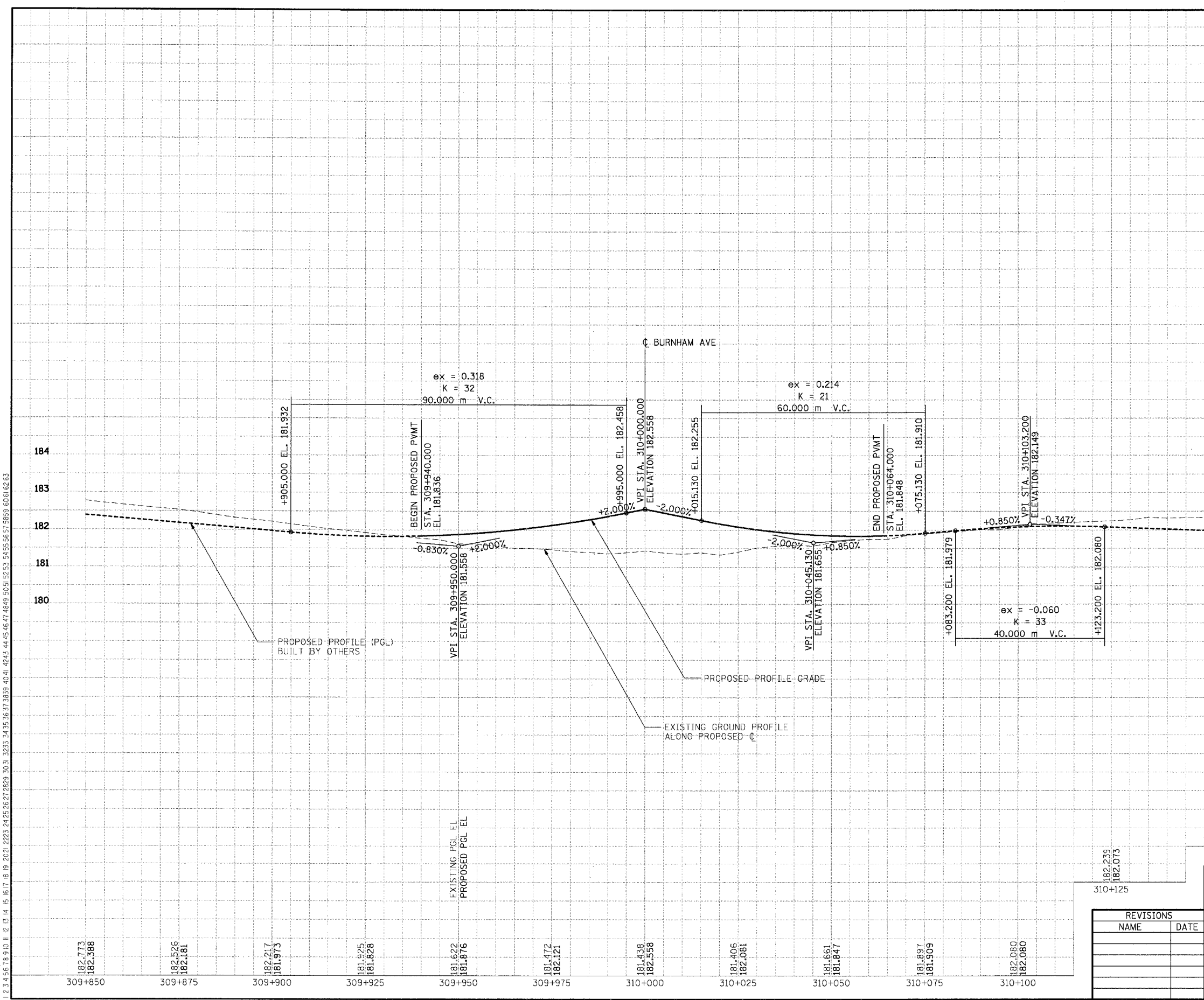


F.A.I. RTE.	SECTION	COUNTY	TOTAL SHEETS	SHEET NO.
80/94	*	COOK	631	58
STA.		TO STA.		
FED. ROAD DIST. NO.		ILLINOIS FED. AID PROJECT		
• (2425 & 2626) R-2		CONTRACT NO. 62111		

PRELIMINARY SURVEY PLOTTED	BY	DATE
NOTE BOOK TEMPLATE AREAS CHECKED		
NO.		

ORIGINAL SURVEY PLOTTED	BY	DATE
NOTE BOOK TEMPLATE AREAS CHECKED		
NO.		

BAJZEKJ
 8-9-2005, 10:08:28
 12.3.4.5.6.7.8.9.10.11.12.13.14.15.16.17.18.19.20.21.22.23.24.25.26.27.28.29.30.31.32.33.34.35.36.37.38.39.40.41.42.43.44.45.46.47.48.49.50.51.52.53.54.55.56.57.58.59.60.61.62.63



182.773	309+850
182.586	
182.526	309+875
182.181	
182.217	309+900
181.973	
181.925	309+925
181.828	
181.622	309+950
181.876	
181.472	309+975
182.121	
181.438	310+000
182.558	
181.406	310+025
182.081	
181.661	310+050
181.847	
181.897	310+075
181.909	
182.080	310+100
182.080	

182.239	310+125
182.073	

ILLINOIS DEPARTMENT OF TRANSPORTATION
 F.A.I. ROUTE 80/94 (KINGERY EXPRESSWAY)
 EB & WB INSIDE LANES (MAINLINE) CONSTRUCTION
 COOK COUNTY

**ROADWAY PROFILE
 BERNICE AVENUE**

HORIZ SCALE: 1:500
 VERT SCALE: 1:50
 DATE: 8/22/05

DRAWN BY: MK
 CHECKED BY: DH

TENG ENGINEERS/ARCHITECTS/PLANNERS
 CHICAGO, ILLINOIS

REVISIONS	
NAME	DATE