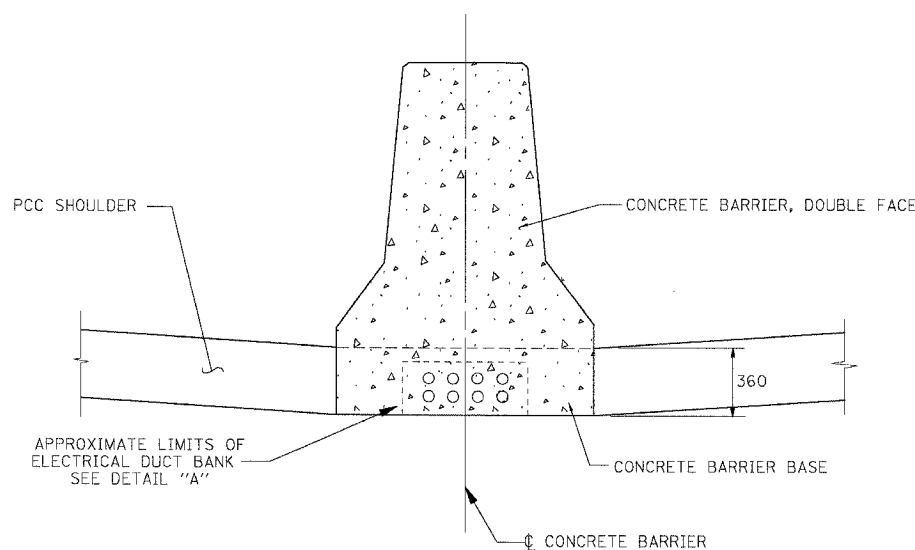
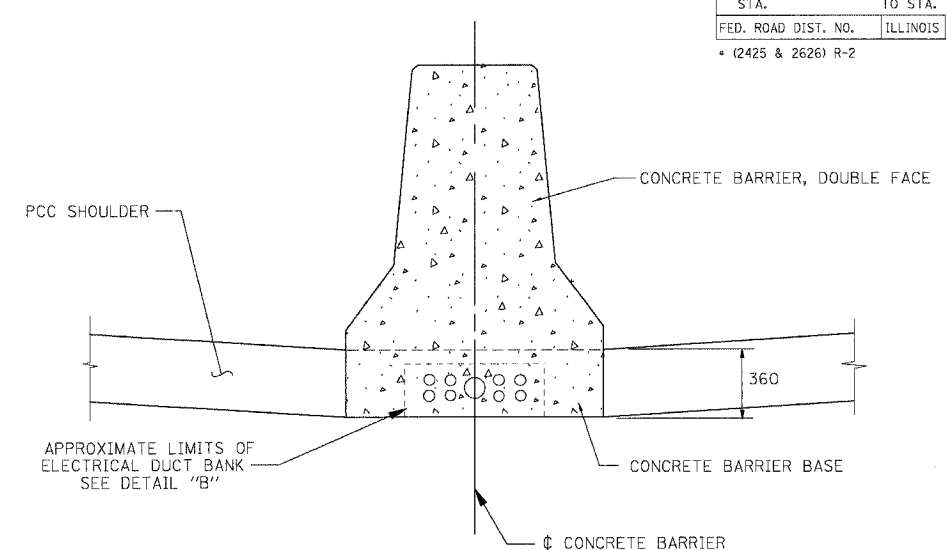


F.A.I. RTE.	SECTION	COUNTY	TOTAL SHEETS	SHEET NO.
80/94	*	COOK	631	105
STA.	TO STA.			
FED. ROAD DIST. NO.	ILLINOIS	FED. AID PROJECT		
* (2425 & 2626) R-2		CONTRACT NO. 62111		



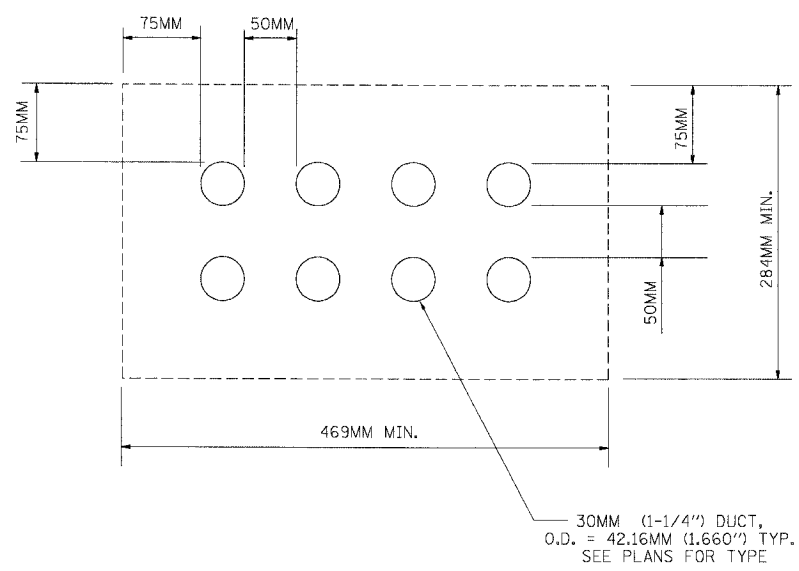
CONCRETE BARRIER, DOUBLE FACE

SHOWING 8 DUCT BANK



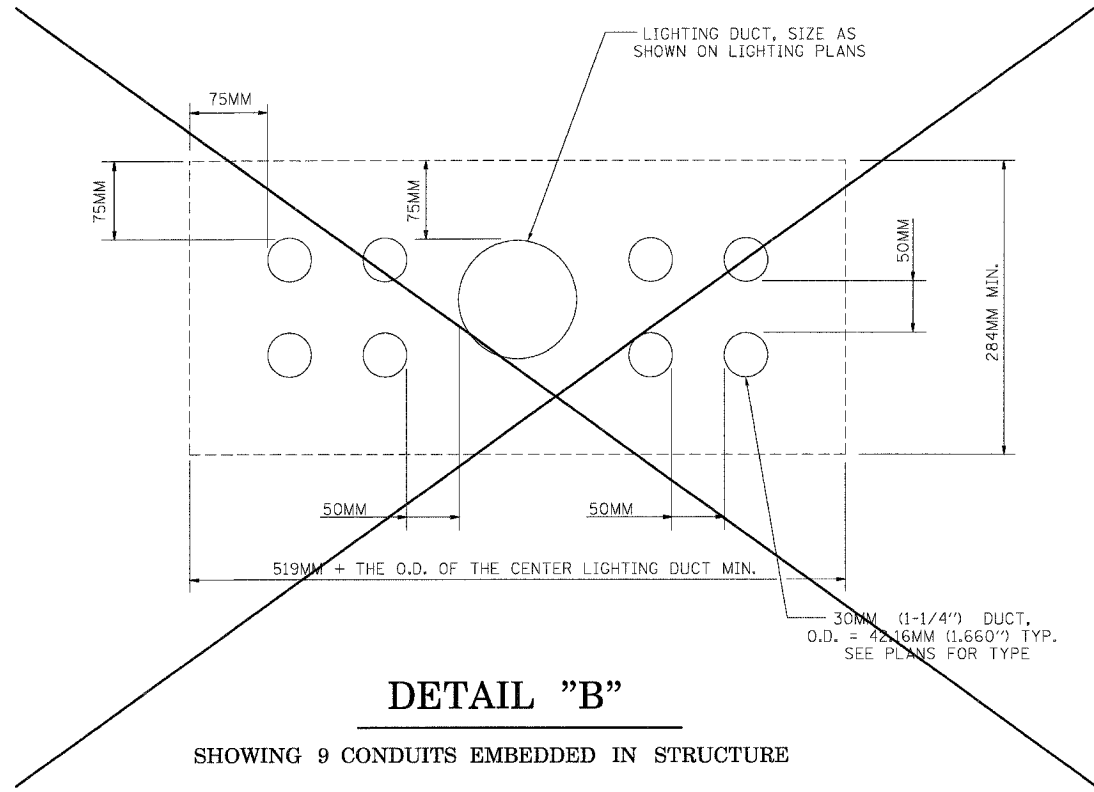
CONCRETE BARRIER, DOUBLE FACE

SHOWING 9 DUCT BANK



DETAIL "A"

SHOWING 8 CONDUITS EMBEDDED IN STRUCTURE



DETAIL "B"

SHOWING 9 CONDUITS EMBEDDED IN STRUCTURE

NOTES:

- 1) SEE "CONCRETE BARRIER DETAILS" FOR ADDITIONAL DETAILS OF THE CONCRETE BARRIER AND CANCRETE BARRIER BASE.
- 2) SEE PLANS FOR TYPES OF CONDUIT ENCASED IN CONCRETE.
- 3) THE LIGHTING DUCT SHALL BE OF THE TYPE AND SIZE AS SHOWN ON THE LIGHTING PLANS.

REVISIONS	
NAME	DATE

ILLINOIS DEPARTMENT OF TRANSPORTATION
F.A.I. ROUTE 80/94 (KINGERY EXPRESSWAY)

DETAILS FOR CONDUITS EMBEDDED IN CONCRETE BARRIER BASE

SCALE _____ DATE 02/04
 DRAWN BY ACE/CAD
 CHECKED BY _____

I:\DOCUMENT\83\PROJECT\CIVIL\DRAWING\DWG\8094\8094-105.DWG
 8/18/2005 10:05:35
 1/2 3 4 5 6 7 8 9 10 11 12 13 14 15 16 17 18 19 20 21 22 23 24 25 26 27 28 29 30 31 32 33 34 35 36 37 38 39 40 41 42 43 44 45 46 47 48 49 50 51 52 53 54 55 56 57 58 59 60 61 62 63