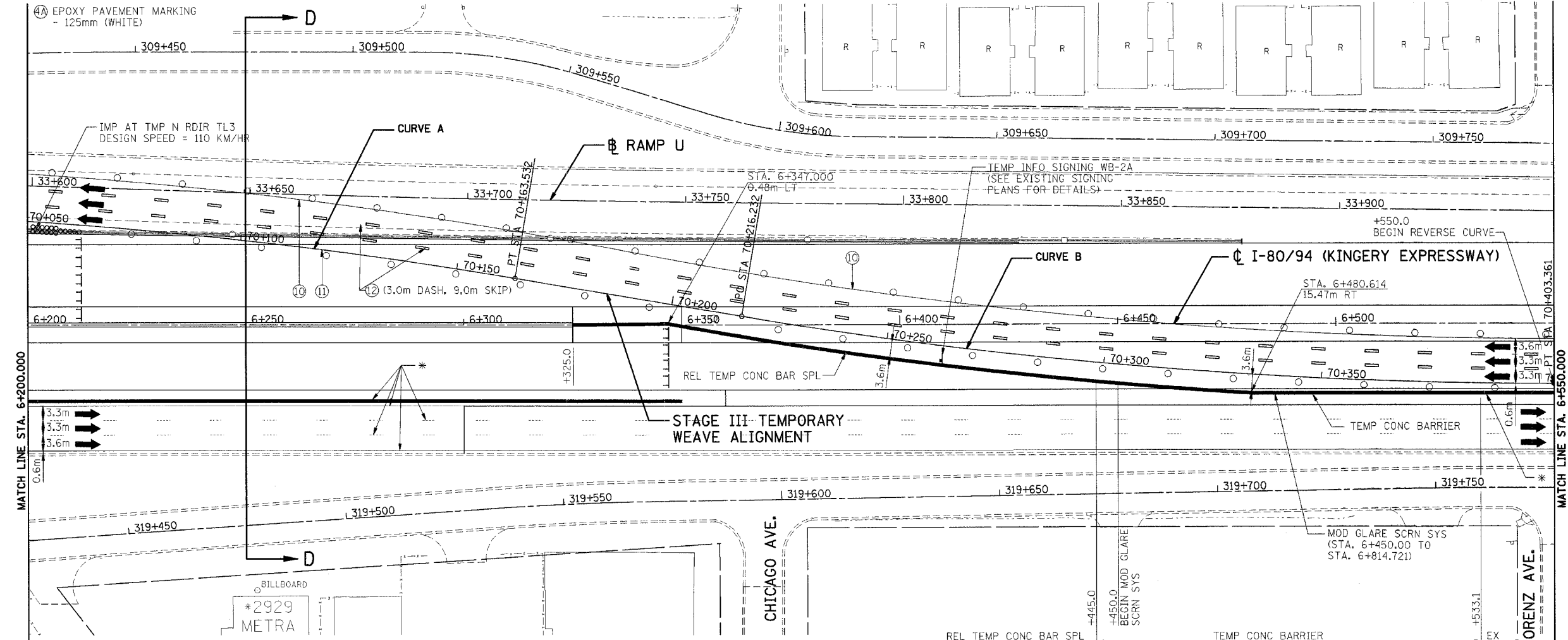


F.A.I. RTE.	SECTION	COUNTY	TOTAL SHEETS	SHEET NO.
80/94		COOK	631	170
STA.	TO STA.			
FED. ROAD DIST. NO.	ILLINOIS	FED. AID PROJECT		
• (2425 & 2626) R-2		CONTRACT NO. 62111		

**LEGEND**

- ① EPOXY PAVEMENT MARKING - LETTERS AND SYMBOLS
- ② EPOXY PAVEMENT MARKING - 100mm (WHITE)
- ③ EPOXY PAVEMENT MARKING - 100mm (YELLOW)
- ④ EPOXY PAVEMENT MARKING - 150mm (WHITE)
- ④A EPOXY PAVEMENT MARKING - 125mm (WHITE)
- ⑤ EPOXY PAVEMENT MARKING - 200mm (WHITE)
- ⑥ EPOXY PAVEMENT MARKING - 300mm (WHITE)
- ⑦ EPOXY PAVEMENT MARKING - 300mm (YELLOW)
- ⑧ EPOXY PAVEMENT MARKING - 600mm (WHITE)
- ⑨ PAVEMENT MARKING TAPE, TYPE III - LETTERS AND SYMBOLS
- ⑩ PAVEMENT MARKING TAPE, TYPE III - 100mm (WHITE)
- ⑪ PAVEMENT MARKING TAPE, TYPE III - 100mm (YELLOW)
- ⑫ PAVEMENT MARKING TAPE, TYPE III - 125mm (WHITE)
- ⑬ PAVEMENT MARKING TAPE, TYPE III - 150mm (WHITE)
- ⑭ PAVEMENT MARKING TAPE, TYPE III - 200mm (WHITE)
- ⑮ PAVEMENT MARKING TAPE, TYPE III - 300mm (WHITE)
- ⑯ PAVEMENT MARKING TAPE, TYPE III - 300mm (YELLOW)
- ⑰ PAVEMENT MARKING TAPE, TYPE III - 600mm (WHITE)



\NRRIT002A.DGN, \TRIT7032A.DGN, \TRIT7332A.DGN, \VAB990002A.DGN, \NRRIT002A.DGN, \NRRIT702A.DGN, \NRRIT7362A.DGN, \NRRIT002A.DGN, \TRIT002A.DGN  
 9-13-2005, 18:22:47  
 1, 2, 3, 4, 5, 6, 7, 8, 9, 10, 11, 12, 13, 14, 15, 16, 17, 18, 19, 20, 21, 22, 23, 24, 25, 26, 27, 28, 29, 30, 31, 32, 33, 34, 35, 36, 37, 38, 39, 40, 41, 42, 43, 44, 45, 46, 47, 48, 49, 50, 51, 52, 53, 54, 55, 56, 57, 58, 59, 60, 61, 62, 63

**LEGEND**

- WORK ZONE
- TEMPORARY PAVEMENT
- PLASTIC DRUMS OR TYPE II BARRICADES W/ STEADY BURN LIGHTS 15m C-C (UNLESS OTHERWISE SHOWN)
- TEMPORARY CONCRETE BARRIER
- TYPE II BARRICADES WITH FLASHING LIGHT
- SIGN
- EXISTING TRAFFIC FLOW
- PROPOSED TRAFFIC FLOW
- BARRICADE, TYPE III
- TRAFFIC CONTROL DEVICES, TEMPORARY CONCRETE BARRIER, TEMPORARY MSE WALLS, TEMPORARY SHEET PILING AND TEMPORARY STRIPING FROM A PREVIOUS STAGE
- FROM PREVIOUS CONTRACT
- SHEET PILING

NOTE: DIMENSIONS TO TEMP CONC BARRIER ARE TO THE BOTTOM FACE OF THE BARRIER CLOSEST TO TRAFFIC.

**STAGE III TEMPORARY WEAVE ALIGNMENT**

CURVE A	CURVE B
PI STA = 70+081.912	PI STA = 70+310.014
N = 545532.266	N = 545496.857
E = 365667.086	E = 365892.719
Δ = 8° 21' 57" (RT)	Δ = 9° 34' 23" (LT)
R = 1,120.000 m	R = 1,120.000 m
T = 81.912 m	T = 93.783 m
L = 163.532 m	L = 187.129 m
E = 2.991 m	E = 3.920 m

	NORTHING	EASTING	STATION	OFFSET
PC CURVE A	545533.056	365585.179	70+000.000	0.000m
PI CURVE A	545532.266	365667.086	70+081.912	2.991m
PT CURVE A	545519.567	365748.007	70+163.532	0.000m
PC CURVE B	545511.397	365800.070	70+216.232	0.000m
PI CURVE B	545496.857	365892.719	70+310.014	3.920m
PT CURVE B	545497.928	365986.496	70+403.361	0.000m

NOTE:  
1. SIGNING AND BARRICADES/ DRUMS SHALL BE PROVIDED IN ACCORDANCE WITH THE MULTI-LANE WEAVE ALIGNMENT DISTRICT ONE DETAIL TC09 FOR WB TRAFFIC.

REVISIONS	
NAME	DATE

ILLINOIS DEPARTMENT OF TRANSPORTATION  
 F.A.I. ROUTE 80/94 (KINGERY EXPRESSWAY)  
 EB & WB INSIDE LANES (MAINLINE) CONSTRUCTION  
 COOK COUNTY

**MAINTENANCE OF TRAFFIC  
 FAI 80/94 - PHASE III, STAGE III  
 STA. 6+200 TO STA. 6+550**

SCALE: 1:500  
 DATE: 9/13/05

DRAWN BY: DP  
 CHECKED BY: JP

**TENG**  
 TENG & ASSOCIATES, INC.  
 ENGINEERS/ARCHITECTS/PLANNERS  
 CHICAGO, ILLINOIS