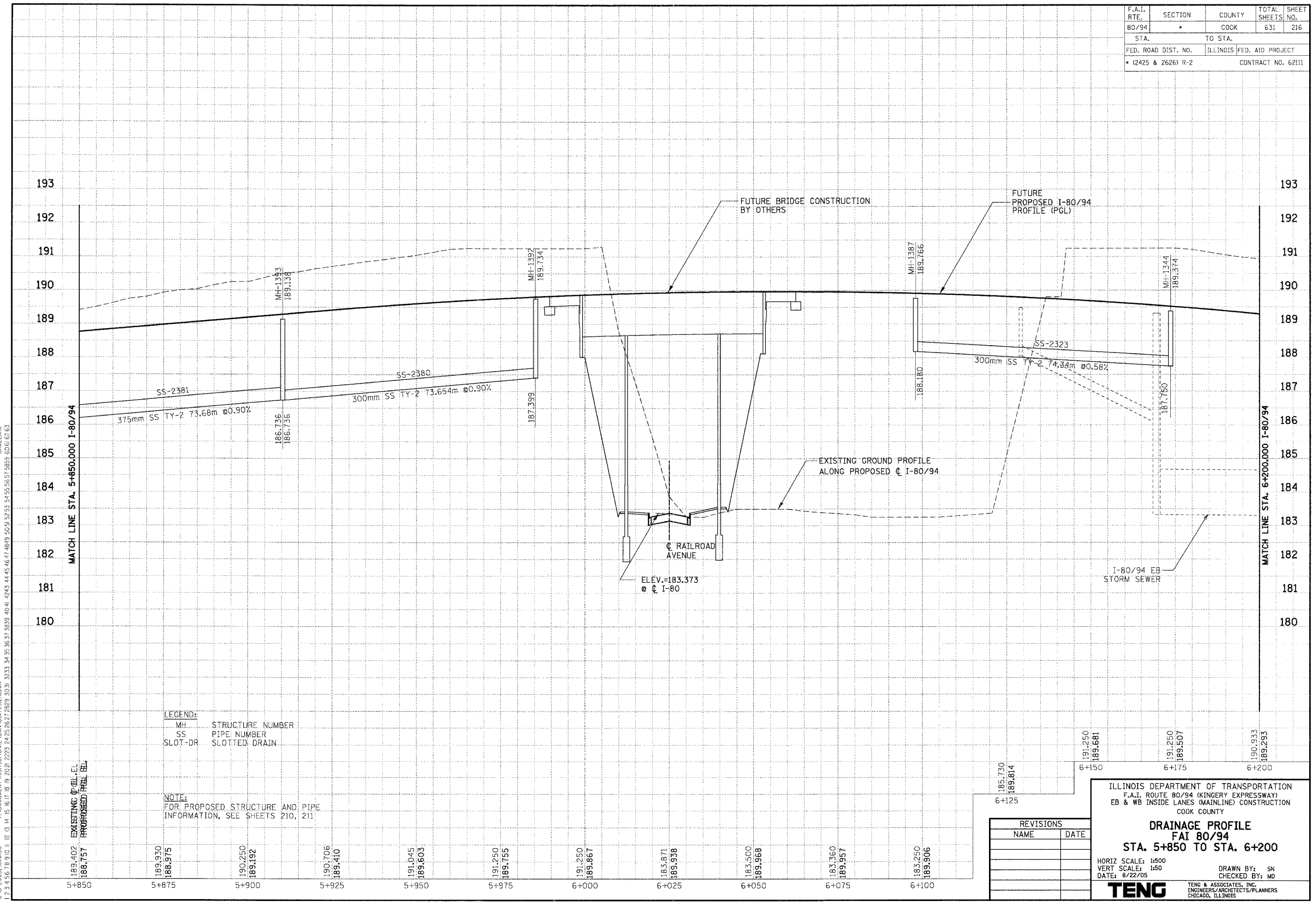


F.A.I. RTE. 80/94	SECTION *	COUNTY COOK	TOTAL SHEETS 631	SHEET NO. 216
STA. FED. ROAD DIST. NO. (2425 & 2626) R-2		TO STA. ILLINOIS FED. AID PROJECT CONTRACT NO. 62111		

PRELIMINARY SURVEYED SURVEY PLOTTED	BY	DATE
NOTE BOOK NO.		
AREAS CHECKED		

ORIGINAL SURVEYED SURVEY PLOTTED	BY	DATE
NOTE BOOK NO.		
AREAS CHECKED		

\VERT002A.DGN, \DR0052A.DGN, \VERT002A.DGN, \VERT002A.DGN, \VERT002A.DGN, \VERT002A.DGN, \VERT002A.DGN, \VERT002A.DGN
 8/19/2005 (06:48) T:\DOCUMENTS\190505\DR0052A.DGN, \VERT002A.DGN, \VERT002A.DGN, \VERT002A.DGN, \VERT002A.DGN, \VERT002A.DGN
 1 2 3 4 5 6 7 8 9 10 11 12 13 14 15 16 17 18 19 20 21 22 23 24 25 26 27 28 29 30 31 32 33 34 35 36 37 38 39 40 41 42 43 44 45 46 47 48 49 50 51 52 53 54 55 56 57 58 59 60 61 62 63



LEGEND:
 MH STRUCTURE NUMBER
 SS PIPE NUMBER
 SLOT-DR SLOTTED DRAIN

NOTE:
 FOR PROPOSED STRUCTURE AND PIPE INFORMATION, SEE SHEETS 210, 211

REVISIONS	
NAME	DATE

ILLINOIS DEPARTMENT OF TRANSPORTATION
 F.A.I. ROUTE 80/94 (KINGERY EXPRESSWAY)
 EB & WB INSIDE LANES (MAINLINE) CONSTRUCTION
 COOK COUNTY

**DRAINAGE PROFILE
 FAI 80/94
 STA. 5+850 TO STA. 6+200**

HORIZ SCALE: 1:500
 VERT SCALE: 1:50
 DATE: 8/22/05

DRAWN BY: SN
 CHECKED BY: MD

TENG
 TENG & ASSOCIATES, INC.
 ENGINEERS/ARCHITECTS/PLANNERS
 CHICAGO, ILLINOIS