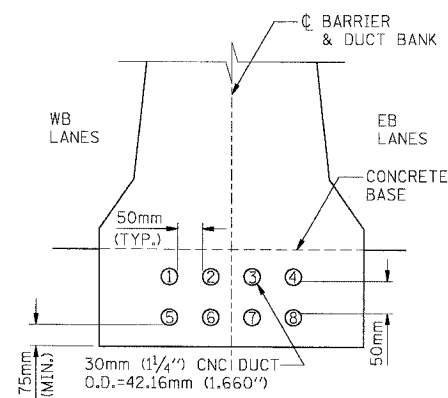
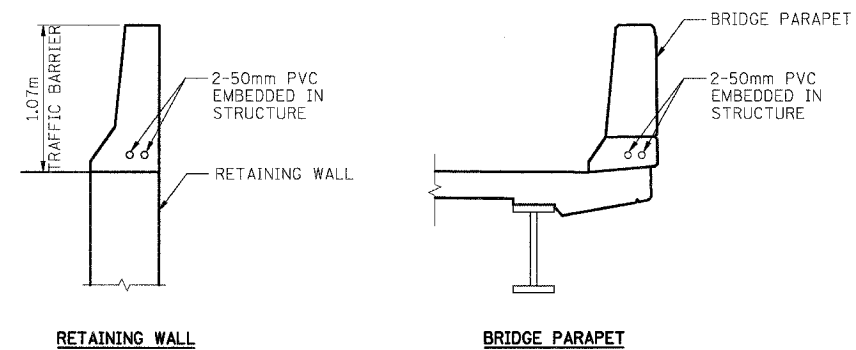


F.A.I. RTE.	SECTION	COUNTY	TOTAL SHEETS	SHEET NO.
80/94		COOK	631	295
STA.		TO STA.		
FED. ROAD DIST. NO.	ILLINOIS	FED. AID PROJECT		
(2425 & 2626) R-2		CONTRACT NO. 62111		



- NOTES:**
1. PROVIDE MINIMUM CONCRETE COVER OF 75mm AROUND THE DUCT BANK.
  2. THE 4 WIDE x 2 HIGH EIS DUCT BANK SHALL BE MEASURED FOR PAYMENT ALONG CENTERLINE OF BARRIER UP TO THE FARTHEST TERMINATION OF ANY DUCT; VERTICAL UPTURNS IN TO JUNCTION BOXES WILL NOT BE MEASURED FOR PAYMENT OR PAID SEPARATELY.

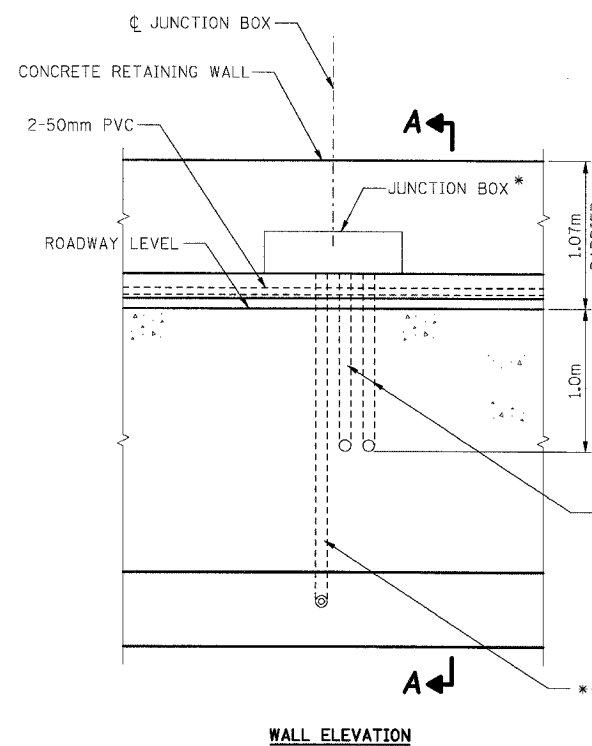
**DETAIL 1**



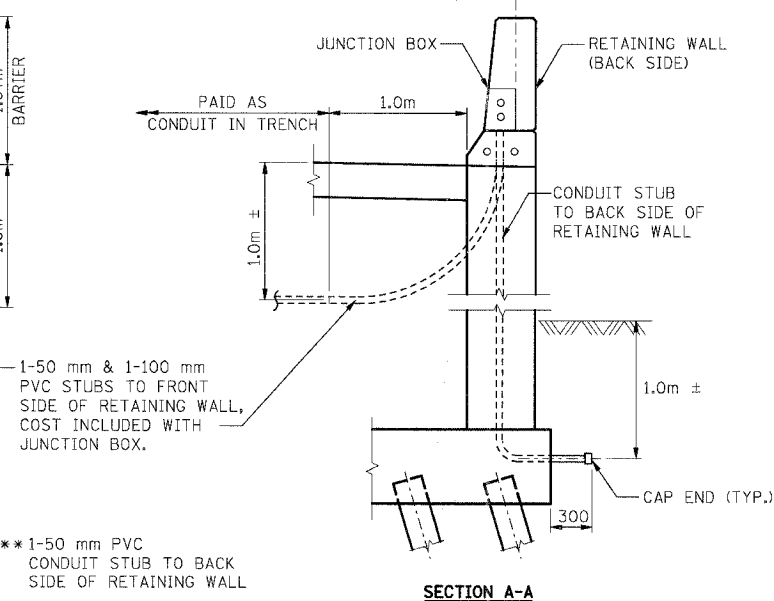
**RETAINING WALL**

**BRIDGE PARAPET**

**DETAIL 2**



**WALL ELEVATION**

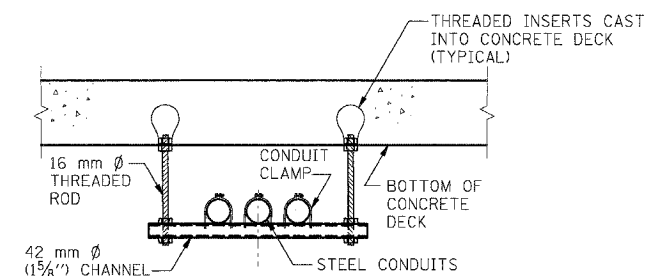


**SECTION A-A**

- NOTES:**
1. 50 mm STUBS ARE SPARE FOR FUTURE USE; ENDS TO BE CAPPED OFF.

**DETAIL 3**

- \* TYPE & SIZE AS SHOWN IN PLANS
- \*\* PAID AS CONDUIT EMBEDDED IN STRUCTURE OF TYPE AND SIZE SPECIFIED.



**NOTE:** THE STEEL CONDUITS SHALL BE SUPPORTED BY HANGERS AT MAXIMUM SPACINGS OF 2.5 m. THE HANGER ASSEMBLY SHALL BE MADE OF GALVANIZED CARBON STEEL. THE CONTRACTOR SHALL SUBMIT THE PROPOSED HANGER ASSEMBLY ALONG WITH DESIGN CALCULATIONS FOR THE ENGINEER'S APPROVAL. DRILLED-IN TYPE ANCHORS OR INSERTS WILL NOT BE PERMITTED. THE COST OF FURNISHING AND INSTALLING HANGER ASSEMBLIES SHALL BE INCLUDED WITH THE UNIT COST FOR CONDUIT PAY ITEMS. COORDINATE INSTALLATION OF CONCRETE INSERTS WITH THE BRIDGE CONSTRUCTION.

**HANGER ASSEMBLY FOR CONDUIT ATTACHED TO BRIDGE DECK**

**DETAIL 4**

148990024.DGN  
 8-9-2005 10:06:03  
 I:\DOCUMENT\83750\CONV\CONV\1052\ALDGN  
 1, 2, 3, 4, 5, 6, 7, 8, 9, 10, 11, 12, 13, 14, 15, 16, 17, 18, 19, 20, 21, 22, 23, 24, 25, 26, 27, 28, 29, 30, 31, 32, 33, 34, 35, 36, 37, 38, 39, 40, 41, 42, 43, 44, 45, 46, 47, 48, 49, 50, 51, 52, 53, 54, 55, 56, 57, 58, 59, 60, 61, 62, 63  
 RAJFKKJ

**SHT. 8 OF 12**

ILLINOIS DEPARTMENT OF TRANSPORTATION  
 F.A.I. ROUTE 80/94 (KINGERY EXPRESSWAY)  
 EB & WB INSIDE LANES (MAINLINE) CONSTRUCTION  
 COOK COUNTY

**ELECTRICAL RACEWAY PLANS  
 DETAILS - I**

SCALE: NONE  
 DATE: 8/22/05

DRAWN BY: JFS  
 CHECKED BY: VCP

**TENG**

TENG & ASSOCIATES, INC.  
 ENGINEERS/ARCHITECTS/PLANNERS  
 CHICAGO, ILLINOIS

REVISIONS	
NAME	DATE