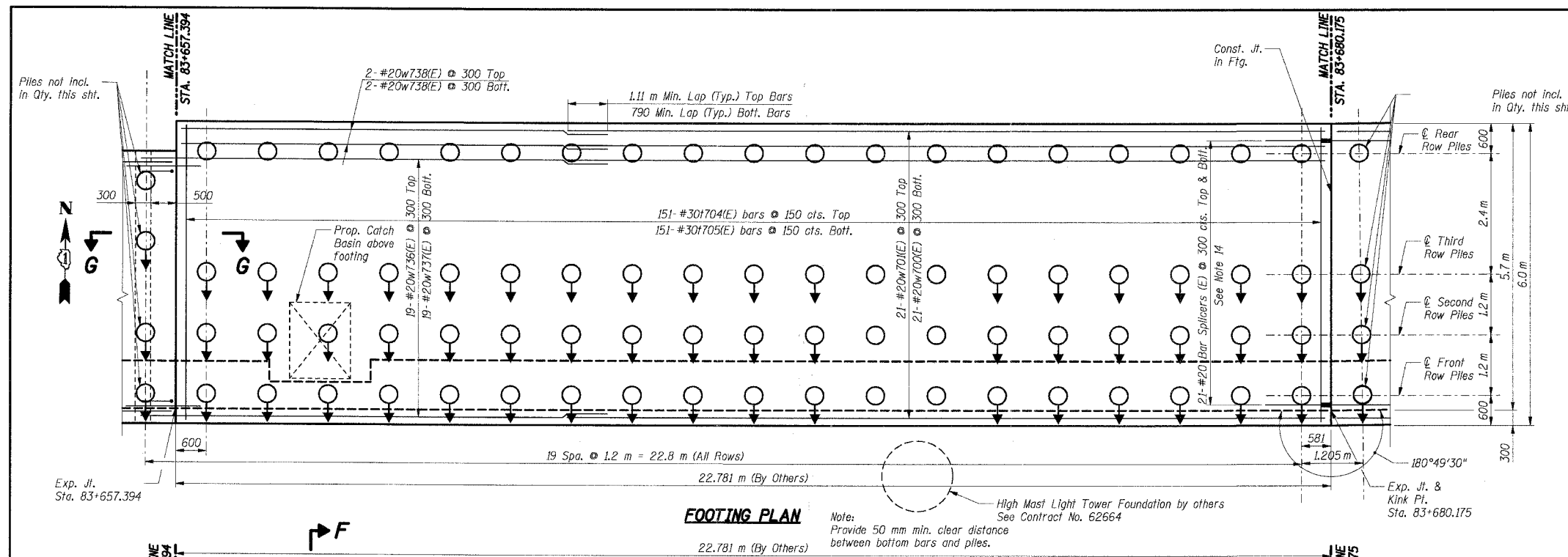


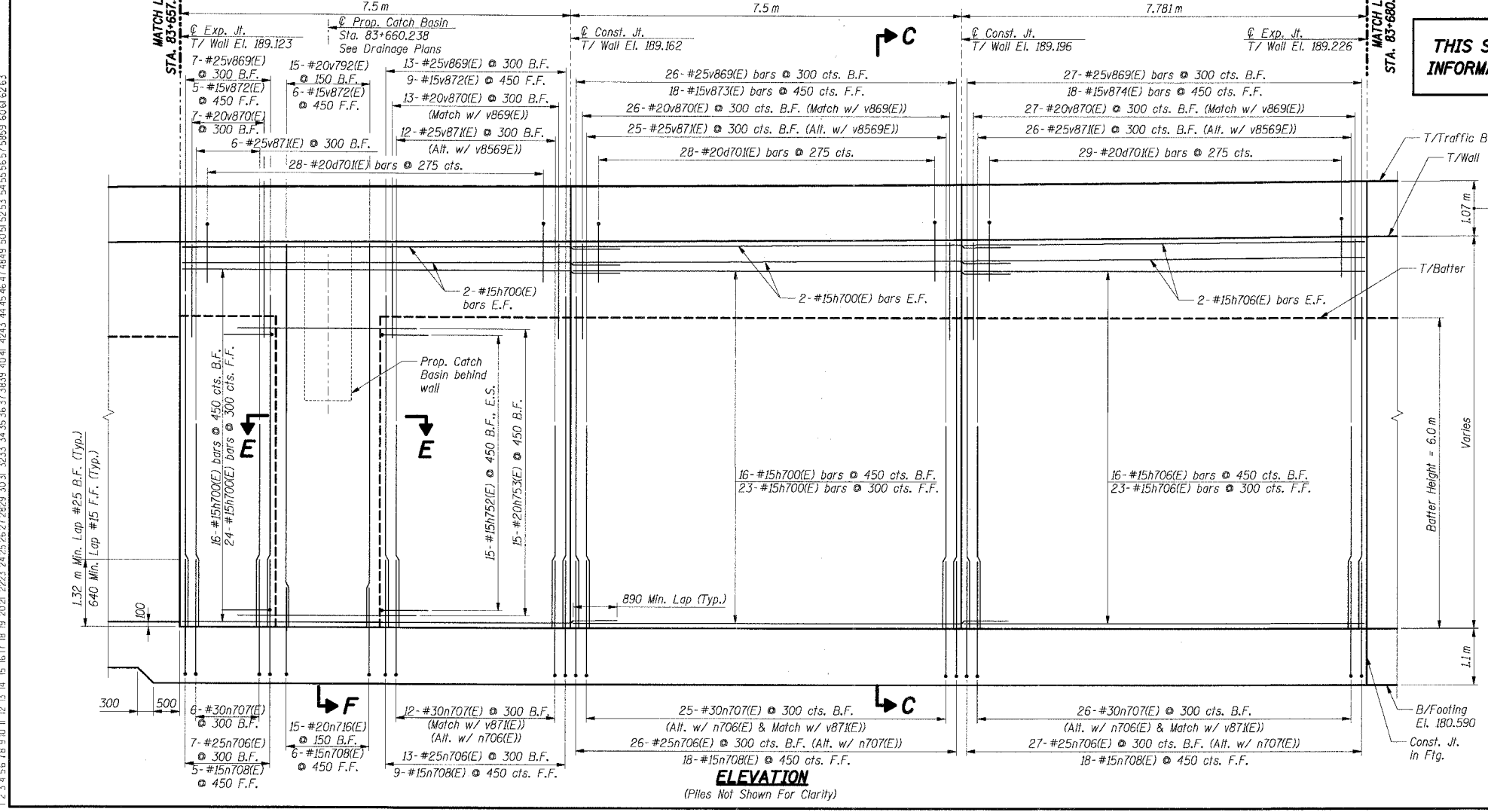
F.A.I. RTE.	SECTION	COUNTY	TOTAL SHEETS	SHEET NO.
80/94		COOK	631	345
STA.	TO STA.			
FED. ROAD DIST. NO.	ILLINOIS	FED. AID PROJECT		
(2425 & 2626) R-2		CONTRACT NO. 6211		



**BILL OF MATERIAL**

Bar	No.	Size	Length (m)	Shape
h70(E)	85	#20	2.59	—
h70(E)	88	#15	8.39	—
h706(E)	44	#15	7.68	—
h752(E)	30	#15	1.49	—
h753(E)	15	#20	3.42	—
n706(E)	73	#25	2.75	—
n707(E)	69	#30	2.85	—
n708(E)	56	#15	1.93	—
n716(E)	15	#20	2.14	—
t704(E)	151	#30	6.40	—
t705(E)	151	#30	5.90	—
v792(E)	15	#20	7.40	—
v869(E)	73	#25	6.88	—
v870(E)	73	#20	2.05	—
v871(E)	69	#25	4.79	—
v872(E)	25	#15	7.40	—
v873(E)	18	#15	7.43	—
v874(E)	18	#15	7.47	—
w700(E)	21	#20	15.00	—
w701(E)	21	#20	15.32	—
w736(E)	19	#20	9.67	—
w737(E)	19	#20	9.02	—
w738(E)	4	#20	8.46	—
<b>Item</b>	<b>Unit</b>	<b>Total</b>		
Concrete Structures	Cu m	262.1		
Reinforcement Bars, Epoxy Coated	kg	21,680		

**THIS SHEET FOR INFORMATION ONLY**



**PILE DATA**

- Type : 356 mm  $\phi$  Metal Shell Concrete Pile
- Required Bearing : 500 kN
- Vertical Piles:
  - Design Capacity : 260 kN
  - Est. Length : 13.5 m
  - No. Required : 24
- Battered Piles:
  - Design Capacity : 500 kN
  - Est. Length : 14.5 m
  - No. Required : 51
  - Test Pile : 1

**Notes:**

- All dimensions are in millimeters (mm) except as noted.
- All dimensions shown are along the front face of the retaining wall.
- All vertical bars in wall stem and traffic barrier start at 50 mm from construction and expansion joint, U.N.O.
- Reinforcement bars designated (E) shall be epoxy coated.
- All edges shall have a 20 mm chamfer unless noted otherwise.
- For Section C-C, see Sht. RW850-43.
- For Section G-G, see Sht. RW850-44.
- E.F. indicates each face, B.F. indicates back face, F.F. indicates front face, E.S. indicates each side.
- See Sht. RW850-47 for Traffic Barrier reinforcement & Noise Abatement Wall pilaster locations.
- For Traffic Barrier details see Sht. RW850-47.
- For Rustication Finish & joint details see Sht. RW850-49.
- For Concrete Pile details see Sht. RW850-51.
- Q indicates Battered Pile 3 1/2:12.
- For Bar Splicer Details, See Sht. RW850-50.

SHT. RW850-34 OF 58

REVISIONS	
NAME	DATE

\*\*\* 2001-167R, (2425 & 2626) R-1 AND (2425 & 2626) R-2

ILLINOIS DEPARTMENT OF TRANSPORTATION  
 F.A.I. ROUTE 80/94 (KINGERY EXPRESSWAY)  
 EB & WB INSIDE LANES (MAINLINE) CONSTRUCTION  
 RETAINING WALL - STRUCTURE NO. 016-W850  
 SECTIONS \*\*\*  
 COOK COUNTY

**FOOTING PLAN & WALL ELEVATION 28**

DATE: 7/18/2005  
 DRAWN BY: J.M.K.  
 CHECKED BY: J.M.K.

**TENG**  
 TENG & ASSOCIATES, INC.  
 ENGINEERS/ARCHITECTS/PLANNERS  
 CHICAGO, ILLINOIS

\NS99R07A.DGN, \NS99R022A.DGN, \NS99R002A.DGN, \NS99R001A.DGN  
 7-2-2005, 10:26:40 T:\DOCUMENTS\STRUCT\CON\RS7062A.DGN  
 12, 3, 4, 5, 18, 9, 11, 12, 13, 14, 15, 16, 17, 18, 19, 20, 21, 22, 23, 24, 25, 26, 27, 28, 29, 30, 31, 32, 33, 34, 35, 36, 37, 38, 39, 40, 41, 42, 43, 44, 45, 46, 47, 48, 49, 50, 51, 52, 53, 54, 55, 56, 57, 58, 59, 60, 61, 62, 63  
 BAUZEKJ