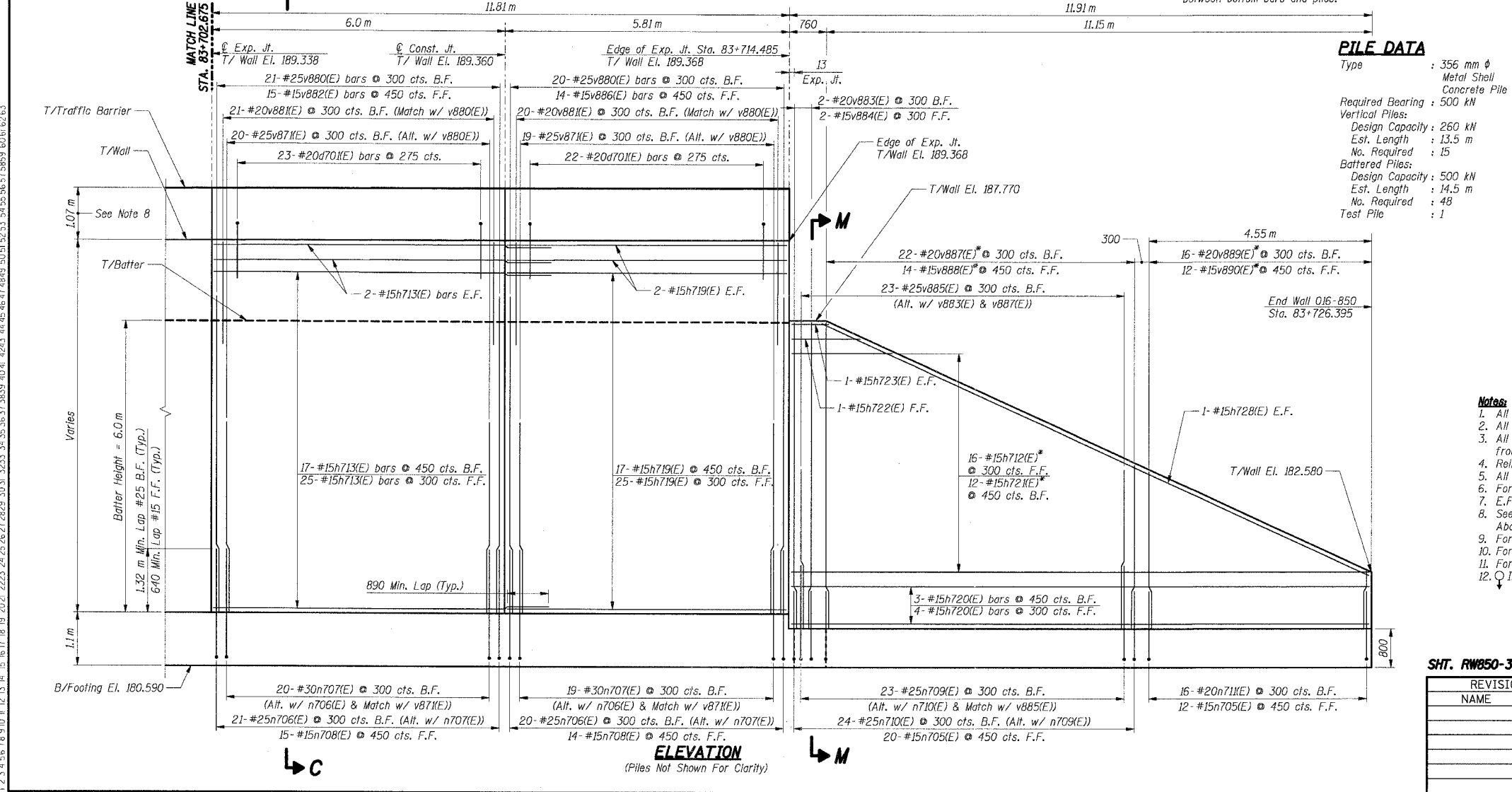
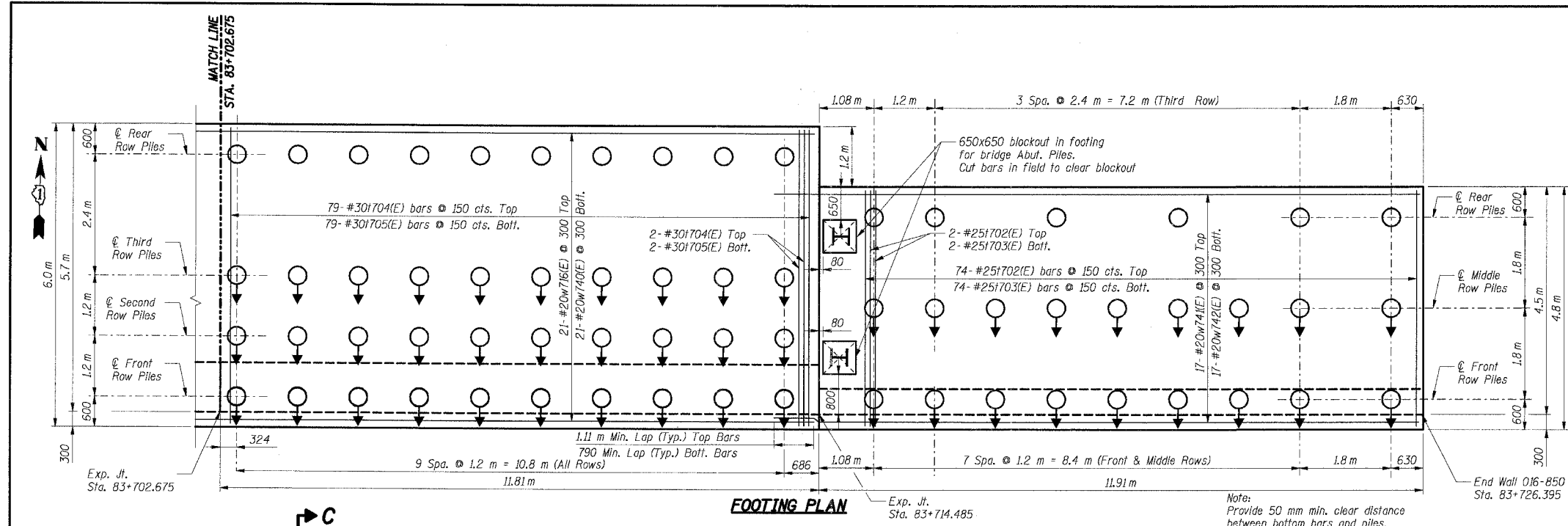


F.A.I. RTE.	SECTION	COUNTY	TOTAL SHEETS	SHEET NO.
80/94		COOK	631	347
STA.	TO STA.			
FED. ROAD DIST. NO.	ILLINOIS	FED. AID PROJECT		
(2425 & 2626) R-2	CONTRACT NO. 62111			

**BILL OF MATERIAL**

Bar	No.	Size	Length (m)	Shape
d70(E)	37	#20	2.59	U
h712(E)	8	#15	13.92	—
h713(E)	46	#15	6.89	—
h719(E)	46	#15	5.71	—
h720(E)	7	#15	11.83	—
h721(E)	6	#15	12.94	—
h722(E)	1	#15	1.44	—
h723(E)	2	#15	0.68	—
h728(E)	2	#15	12.28	—
n705(E)	32	#15	1.63	—
n706(E)	41	#25	2.75	—
n707(E)	39	#30	2.85	—
n708(E)	29	#15	1.93	—
n709(E)	23	#25	2.45	—
n710(E)	24	#25	1.92	—
n711(E)	16	#20	1.84	—
t702(E)	76	#25	5.10	—
t703(E)	76	#25	4.70	—
t704(E)	81	#30	6.40	—
t705(E)	81	#30	5.90	—
v880(E)	21	#25	6.98	—
v881(E)	21	#20	2.15	—
v871(E)	39	#25	4.79	—
v882(E)	15	#15	7.62	—
v883(E)	2	#20	6.34	—
v884(E)	2	#15	6.34	—
v885(E)	23	#25	3.28	—
v886(E)	14	#15	7.63	—
v887(E)	11	#20	9.77	—
v888(E)	7	#15	9.98	—
v889(E)	8	#20	4.50	—
v890(E)	6	#15	4.71	—
w716(E)	21	#20	14.48	—
w740(E)	21	#20	14.16	—
w741(E)	17	#20	13.02	—
w742(E)	17	#20	12.70	—
Item	Unit	Total		
Concrete Structures	Cu m	206.2		
Reinforcement Bars, Epoxy Coated	kg	16,750		



**PILE DATA**

Type : 356 mm  $\phi$  Metal Shell Concrete Pile

Required Bearing : 500 kN

Vertical Piles:

- Design Capacity : 260 kN
- Est. Length : 13.5 m
- No. Required : 15

Battered Piles:

- Design Capacity : 500 kN
- Est. Length : 14.5 m
- No. Required : 48
- Test Pile : 1

- Notes:**
- All dimensions are in millimeters (mm) except as noted.
  - All dimensions shown are along the front face of the retaining wall.
  - All vertical bars in wall stem and traffic barrier start at 50 mm from construction and expansion joint, U.N.O.
  - Reinforcement bars designated (E) shall be epoxy coated.
  - All edges shall have a 20 mm chamfer unless noted otherwise.
  - For Section C-C, see Sht. RW850-43; For Section M-M, see Sht. RW850-16.
  - E.F. indicates each face, B.F. indicates back face, F.F. indicates front face.
  - See Sht. RW850-41 for Traffic Barrier reinforcement & Noise Abatement Wall pilaster locations.
  - For Traffic Barrier details see Sht. RW850-47.
  - For Rustication Finish & joint details see Sht. RW850-48.
  - For Concrete Pile details see Sht. RW850-51.
  - Q Indicates Battered Pile 3 1/2:12.

**SHT. RW850-36 OF 58**

REVISIONS	
NAME	DATE

\*\*\* 2001-167R, (2425 & 2626) R-1 AND (2425 & 2626) R-2

ILLINOIS DEPARTMENT OF TRANSPORTATION  
F.A.I. ROUTE 80/94 (KINGERY EXPRESSWAY)  
EB & WB INSIDE LANES (MAINLINE) CONSTRUCTION  
RETAINING WALL - STRUCTURE NO. 016-W850  
SECTIONS \*\*\*  
COOK COUNTY

**FOOTING PLAN & WALL ELEVATION 30**

DATE: 7/18/2005

DRAWN BY: JMK  
CHECKED BY: JMK

**TENG**  
TENG & ASSOCIATES, INC.  
ENGINEERS/ARCHITECTS/PLANNERS  
CHICAGO, ILLINOIS

\RS99002A.DGN, \RS99002A.DGN, \RS99002A.DGN  
 7-2-2005, 10:24:4  
 T:\DOCUMENT\951750\STRUCT\CON\RS10652A.DGN  
 12 13 14 15 16 17 18 19 20 21 22 23 24 25 26 27 28 29 30 31 32 33 34 35 36 37 38 39 40 41 42 43 44 45 46 47 48 49 50 51 52 53 54 55 56 57 58 59 60 61 62 63