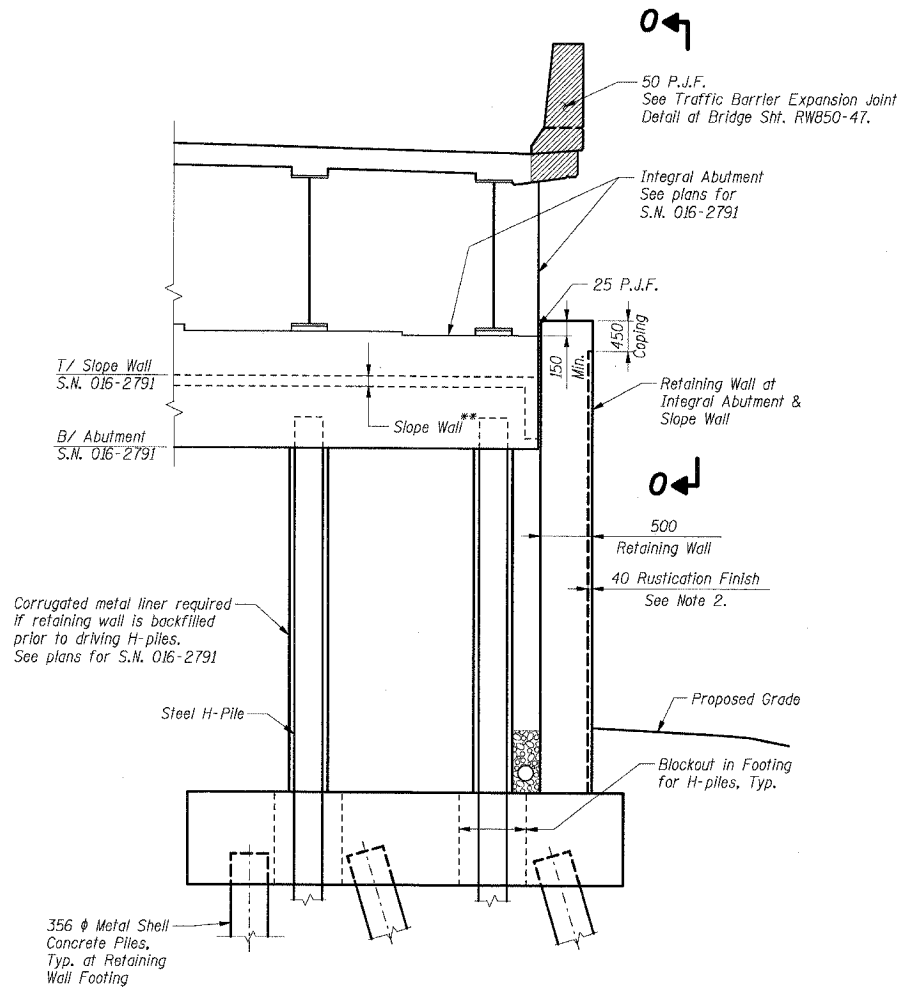
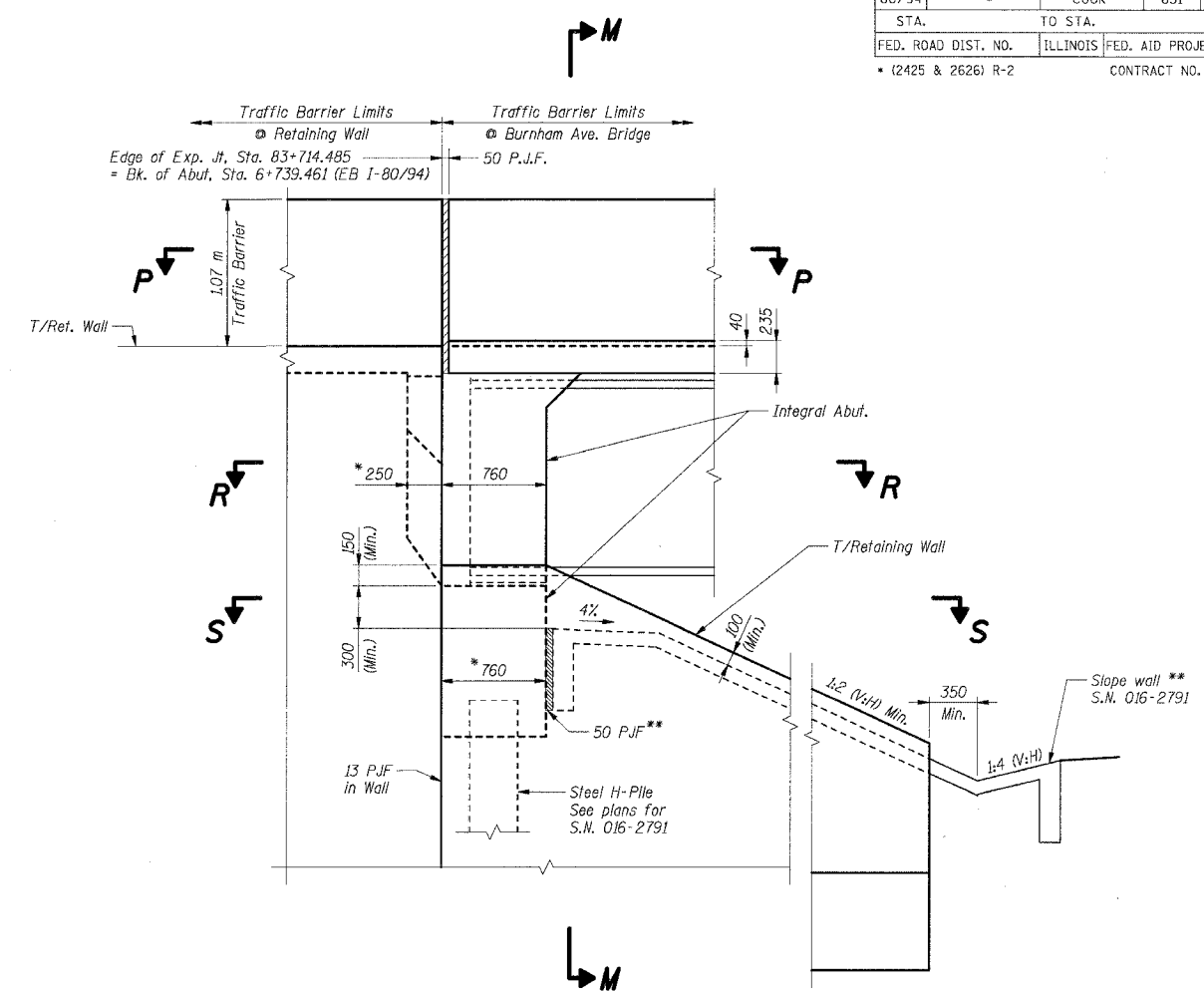


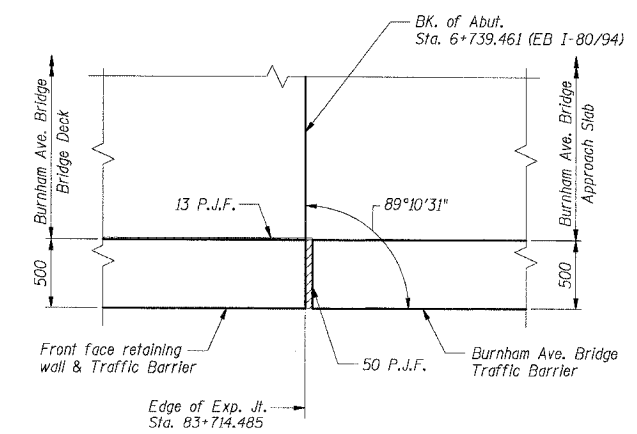
F.A.I. RTE.	SECTION	COUNTY	TOTAL SHEETS NO.	SHEET NO.
80/94	*	COOK	631	351
STA.	TO STA.			
FED. ROAD DIST. NO.	ILLINOIS		FED. AID PROJECT	
* (2425 & 2626) R-2			CONTRACT NO. 62111	



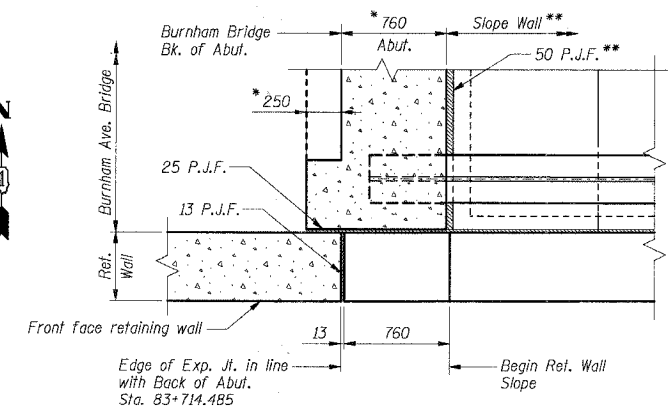
SECTION M-M
Work with Sht. RW850-36.



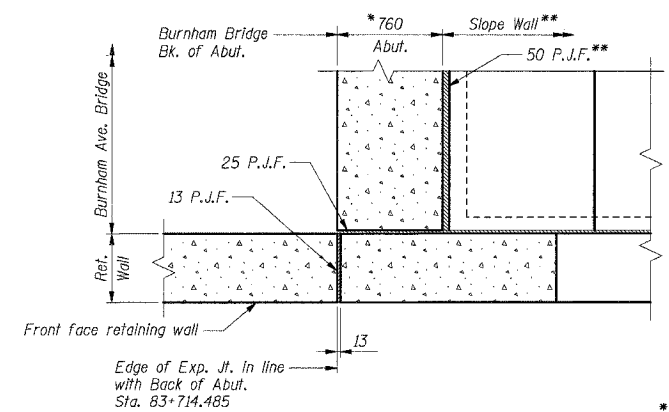
ELEVATION O-O



PLAN DETAIL P-P



SECTION R-R



SECTION S-S

- Notes:
1. All dimensions are in millimeters (mm) except as noted.
 2. For Rustication Finish and joint details see Sht. RW850-49.
 3. * denotes See plans for S.N. 016-2791 for final dimensions.
 4. ** denotes See Bridge Plans S.N. 016-2791

*** 2001-167R, (2425 & 2626) R-1 AND (2425 & 2626) R-2

ILLINOIS DEPARTMENT OF TRANSPORTATION
F.A.I. ROUTE 80/94 (KINGERY EXPRESSWAY)
EB & WB INSIDE LANES (MAINLINE) CONSTRUCTION
RETAINING WALL - STRUCTURE NO. 016-W850
SECTIONS ***
COOK COUNTY

WALL SECTIONS & DETAILS V

SHT. RW850-46 OF 58

REVISIONS	
NAME	DATE

DATE: 7/18/2005
DRAWN BY: MJK
CHECKED BY: MJK

TENG
TENG & ASSOCIATES, INC.
ENGINEERS/ARCHITECTS/PLANNERS
CHICAGO, ILLINOIS

11-1899002A.DGN, .W850R82A.DGN
 7-12-2005, 10:24:48
 T:\DOCUMENTS\105150\STRUCT\CONV\810702A.DGN
 2 3 4 5 6 7 8 9 10 11 12 13 14 15 16 17 18 19 20 21 22 23 24 25 26 27 28 29 30 31 32 33 34 35 36 37 38 39 40 41 42 43 44 45 46 47 48 49 50 51 52 53 54 55 56 57 58 59 60 61 62 63