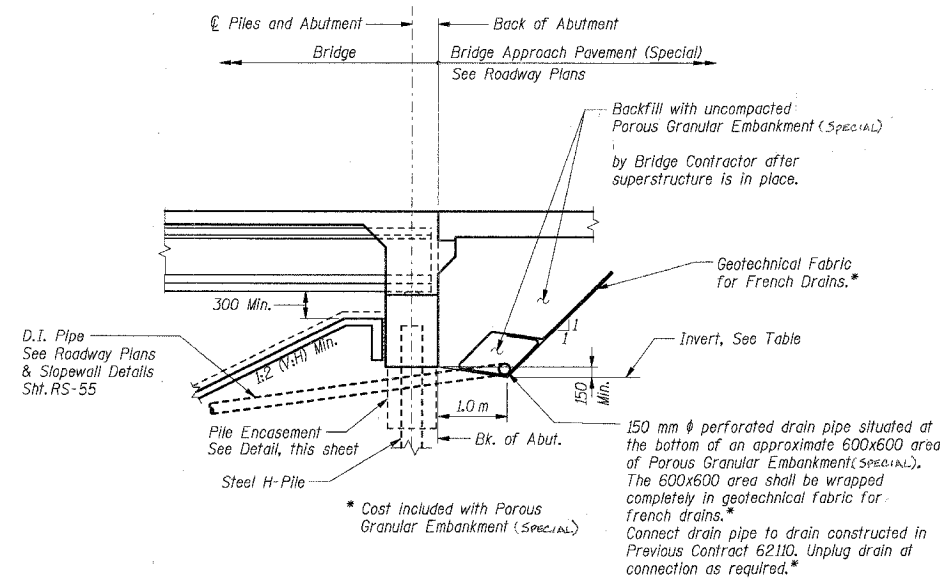


F.A.I. RTE.	SECTION	COUNTY	TOTAL SHEETS	SHEET NO.
80/94	*	COOK	631	375
STA.	TO STA.			
FED. ROAD DIST. NO.	ILLINOIS	FED. AID PROJECT		
* (2425 & 2626) R-2		CONTRACT NO. 62111		

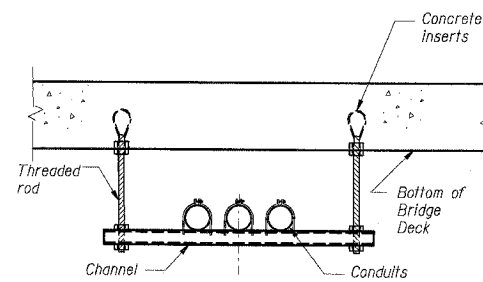
**150 mm  $\phi$  Perforated Drain  
Pipe Invert Elevation Table**

Location & Station @ I-80/94	Offset (m)	Invert Elev.
West Abut. Sta. 5+997.500		
At Wall W848	41.578 LT	186.607
Lowpoint	25.06 LT	186.525
Const. Joint	22.56 LT	186.537
CenterLine I-80/94	0.00	186.650
Const. Joint	18.93 RT	186.555
Lowpoint	22.43 RT	186.538
At Wall W847	32.048 RT	186.586
East Abut. Sta. 6+054.500		
At Wall W849	41.503 LT	186.707
Lowpoint	25.06 LT	186.625
Const. Joint	22.56 LT	186.637
CenterLine I-80/94	0.00	186.750
Const. Joint	18.93 RT	186.655
Lowpoint	22.43 RT	186.638
At Wall W850	31.117 RT	186.681

\* D.I. Pipe constructed in Contract 62110 by Others

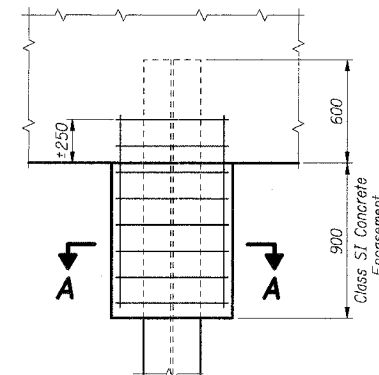


**ABUTMENT BACKFILL SECTION**

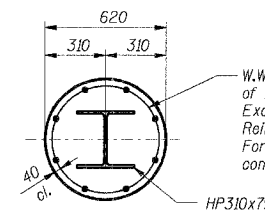


Note: The hanger assemblies including concrete inserts for fiber optic conduits shall be provided as part of the conduit pay items included in Electrical Raceway plans. The cost of installing inserts in the bridge deck shall be included with Concrete Superstructure. Refer to Electrical Raceway plans for limits, numbers and locations of conduits.

**HANGER ASSEMBLIES FOR FIBER OPTIC CONDUITS ATTACHED TO BRIDGE DECK**



**ELEVATION**



**SECTION A-A**

**PILE ENCASEMENT AT ABUTMENTS**

**STATION 6+025.000  
BUILT 200\_ BY  
STATE OF ILLINOIS  
F.A.I. RT. 80/94 SEC. 1977-121-R  
LOADING MS-18 & ALT.  
STR. NO. 016-2792**

**NAME PLATE**  
See Standard 515001  
See Sht. RS-36 for location  
(1 Thus)

**Notes:**  
1. All dimensions are in millimeters (mm) except as noted.

SHT. RS-3 OF 70

REVISIONS	
NAME	DATE

ILLINOIS DEPARTMENT OF TRANSPORTATION  
F.A.I. ROUTE 80/94 (KINGERY EXPRESSWAY)  
EB & WB INSIDE LANES (MAINLINE) CONSTRUCTION  
I-80/94 OVER RAILROAD AVENUE  
STRUCTURE NO. 016-2792 STA. 6+025.000  
SECTION 1977-121-R  
COOK COUNTY

**MISCELLANEOUS DETAILS**

DATE: 7/18/2005  
DRAWN BY: LS  
CHECKED BY: TCJ

**TENG**  
TENG & ASSOCIATES, INC.  
ENGINEERS/ARCHITECTS/PLANNERS  
CHICAGO, ILLINOIS

\AB95002A.DGN, \LAB95002A.DGN, \MS131312A.DGN  
 F:\DOCUMENTS\STRUCT\06\MS131312A.DGN  
 7-2-2005, 10:25:21  
 12 13 14 15 16 17 18 19 20 21 22 23 24 25 26 27 28 29 30 31 32 33 34 35 36 37 38 39 40 41 42 43 44 45 46 47 48 49 50 51 52 53 54 55 56 57 58 59 60 61 62 63