

F.A.I. RT.E.	SECTION	COUNTY	TOTAL SHEETS	SHEET NO.
80/94		COOK	631	438
STA.		TO STA.		
FED. ROAD DIST. NO.	ILLINOIS	FED. AID PROJECT		
* (2425 & 2626) R-2		CONTRACT NO. 62111		

**NOTES**

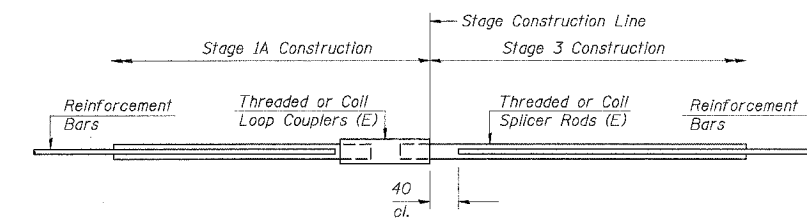
Bar splicer assemblies shall be of an approved type and shall develop in tension at least 125 percent of the yield strength of the lapped reinforcement bars.  
 Splicer rods shall be of minimum 400 MPa yield strength, threaded or coiled full length.  
 All reinforcement bars shall be lapped and tied to the splicer rods or dowel bars.  
 Bar splicer assemblies shall be epoxy coated according to the requirements for reinforcement bars.  
 Other systems of similar design may be submitted to the Engineer for approval. Approval shall be based on certified test results from an approved testing laboratory that the proposed bar splicer assembly satisfies the following requirements:

- ① Minimum Capacity =  $1.25 \times f_y \times A_T$   
(Tension in kN)
- ② Minimum \*Pull-out Strength =  $1.25 \times f_{s_{allow}} \times A_T$   
(Tension in kN)

Where  $f_y$  = Yield strength of lapped reinforcement bars in MPa.  
 $f_{s_{allow}}$  = Allowable tensile stress in lapped reinforcement bars in MPa (Service Load)  
 $A_T$  = Tensile stress area of lapped reinforcement bars (mm<sup>2</sup>).  
 \* = 28 day concrete

BAR SPLICER ASSEMBLIES			
Bar Size to be Spliced	Splicer Rod or Dowel Bar Length	Strength Requirements	
		Min. Capacity kN - tension	Min. Pull-Out Strength kN - tension
#15	640 mm	100	40
#20	790 mm	150	60
#25	1.32 m	250	100
#30	1.85 m	350	140
#35	2.64 m	500	200

Bar splicer assemblies shall be according to Section 508 of the Standard Specifications, except as noted. The furnishing and installation of bar splicer assemblies will be measured and paid for at the contract unit price each for "BAR SPLICERS."  
 All dimensions in millimeters (mm) except as noted.



**STANDARD**

No. Assemblies Required					Locations
Bar Size #15	Bar Size #20	Bar Size #25	Bar Size #30		
6		8			W. Abutment **
11	4	12	24		Pier 1 **
11	4	12	24		Pier 2 **
6		8			E. Abutment **
636	20	2			Deck Plan III/IV **

\*\* Provided in Previous Contract 62110, See Note 1.

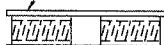
The diameter of this part is the same as the diameter of the bar spliced.

**ROLLED THREAD DOWEL BAR**



**\*\* ONE PIECE**

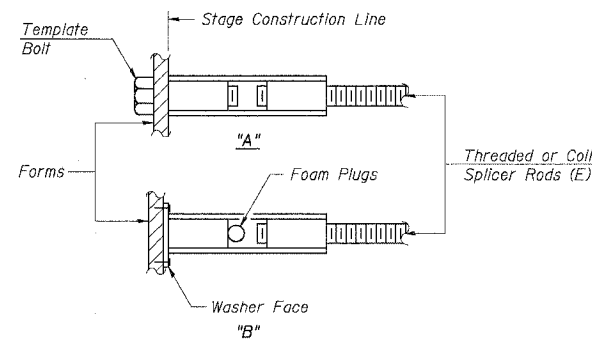
Wire Connector



**WELDED SECTIONS**

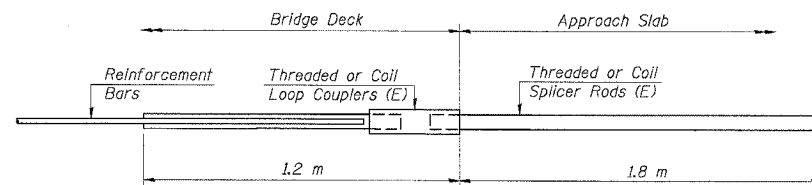
**BAR SPLICER ASSEMBLY ALTERNATIVES**

\*\* Heavy Hex Nuts conforming to ASTM A 563M, Grade C, D or DH may be used.



**INSTALLATION AND SETTING METHODS**

"A": Set bar splicer assembly by means of a template bolt.  
 "B": Set bar splicer assembly by nailing to wood Forms or cementing to steel Forms.  
 (E) : Indicates epoxy coating.



**FOR INTEGRAL OR SEMI-INTEGRAL ABUTMENTS**

Bar Splicer for #15 bar		
Min. Capacity = 100 kN - tension		
Min. Pull-out Strength = 40 kN - tension		
No. Required =	Deck Plan	Construction Stage
124	I	IA & IB **
144	II	2 **
120	III	2 & 3 **
89	IV	IA **

\*\* Provided in Previous Contract 62110, See Note 1.

**Note:**

1. Bar Splicers were paid for and the coupler ends installed during a previous contract. The splicer rods are in storage under ownership of the Department. The Contractor shall obtain the splicer rods from the Engineer and install them under this contract. Installation of the splicer rods including cleaning of coupler ends and splicer rods shall be included with Concrete Structures or Concrete Superstructure as applicable.

**SHT. RS-66 OF 70**

REVISIONS	
NAME	DATE

ILLINOIS DEPARTMENT OF TRANSPORTATION  
 F.A.I. ROUTE 80/94 (KINCERY EXPRESSWAY)  
 EB & WB INSIDE LANES (MAINLINE) CONSTRUCTION  
 I-80/94 OVER RAILROAD AVENUE  
 STRUCTURE NO. 016-2792 STA. 6+025.000  
 SECTION 1977-121-R  
 COOK COUNTY

**BAR SPLICER DETAILS**

DATE: 7/18/2005  
 DRAWN BY: LG  
 CHECKED BY: MJK

**TENG**  
 TENG & ASSOCIATES, INC.  
 ENGINEERS/ARCHITECTS/PLANNERS  
 CHICAGO, ILLINOIS

1. NBR9002A.DGN, 11/19/99 02:24:00  
 2. 3 4 5 6 7 8 9 10 11 12 13 14 15 16 17 18 19 20 21 22 23 24 25 26 27 28 29 30 31 32 33 34 35 36 37 38 39 40 41 42 43 44 45 46 47 48 49 50 51 52 53 54 55 56 57 58 59 60 61 62 63  
 64 65 66 67 68 69 70 71 72 73 74 75 76 77 78 79 80 81 82 83 84 85 86 87 88 89 90 91 92 93 94 95 96 97 98 99 100  
 101 102 103 104 105 106 107 108 109 110 111 112 113 114 115 116 117 118 119 120 121 122 123 124 125 126 127 128 129 130 131 132 133 134 135 136 137 138 139 140  
 141 142 143 144 145 146 147 148 149 150 151 152 153 154 155 156 157 158 159 160 161 162 163 164 165 166 167 168 169 170 171 172 173 174 175 176 177 178 179 180  
 181 182 183 184 185 186 187 188 189 190 191 192 193 194 195 196 197 198 199 200  
 201 202 203 204 205 206 207 208 209 210 211 212 213 214 215 216 217 218 219 220 221 222 223 224 225 226 227 228 229 230 231 232 233 234 235 236 237 238 239 240  
 241 242 243 244 245 246 247 248 249 250 251 252 253 254 255 256 257 258 259 260 261 262 263 264 265 266 267 268 269 270 271 272 273 274 275 276 277 278 279 280  
 281 282 283 284 285 286 287 288 289 290 291 292 293 294 295 296 297 298 299 300  
 301 302 303 304 305 306 307 308 309 310 311 312 313 314 315 316 317 318 319 320 321 322 323 324 325 326 327 328 329 330 331 332 333 334 335 336 337 338 339 340  
 341 342 343 344 345 346 347 348 349 350 351 352 353 354 355 356 357 358 359 360 361 362 363 364 365 366 367 368 369 370 371 372 373 374 375 376 377 378 379 380  
 381 382 383 384 385 386 387 388 389 390 391 392 393 394 395 396 397 398 399 400  
 401 402 403 404 405 406 407 408 409 410 411 412 413 414 415 416 417 418 419 420 421 422 423 424 425 426 427 428 429 430 431 432 433 434 435 436 437 438 439 440  
 441 442 443 444 445 446 447 448 449 450 451 452 453 454 455 456 457 458 459 460 461 462 463 464 465 466 467 468 469 470 471 472 473 474 475 476 477 478 479 480  
 481 482 483 484 485 486 487 488 489 490 491 492 493 494 495 496 497 498 499 500  
 501 502 503 504 505 506 507 508 509 510 511 512 513 514 515 516 517 518 519 520 521 522 523 524 525 526 527 528 529 530 531 532 533 534 535 536 537 538 539 540  
 541 542 543 544 545 546 547 548 549 550 551 552 553 554 555 556 557 558 559 560 561 562 563 564 565 566 567 568 569 570 571 572 573 574 575 576 577 578 579 580  
 581 582 583 584 585 586 587 588 589 590 591 592 593 594 595 596 597 598 599 600  
 601 602 603 604 605 606 607 608 609 610 611 612 613 614 615 616 617 618 619 620 621 622 623 624 625 626 627 628 629 630 631 632 633 634 635 636 637 638 639 640  
 641 642 643 644 645 646 647 648 649 650 651 652 653 654 655 656 657 658 659 660 661 662 663 664 665 666 667 668 669 670 671 672 673 674 675 676 677 678 679 680  
 681 682 683 684 685 686 687 688 689 690 691 692 693 694 695 696 697 698 699 700  
 701 702 703 704 705 706 707 708 709 710 711 712 713 714 715 716 717 718 719 720 721 722 723 724 725 726 727 728 729 730 731 732 733 734 735 736 737 738 739 740  
 741 742 743 744 745 746 747 748 749 750 751 752 753 754 755 756 757 758 759 760 761 762 763 764 765 766 767 768 769 770 771 772 773 774 775 776 777 778 779 780  
 781 782 783 784 785 786 787 788 789 790 791 792 793 794 795 796 797 798 799 800  
 801 802 803 804 805 806 807 808 809 810 811 812 813 814 815 816 817 818 819 820 821 822 823 824 825 826 827 828 829 830 831 832 833 834 835 836 837 838 839 840  
 841 842 843 844 845 846 847 848 849 850 851 852 853 854 855 856 857 858 859 860 861 862 863 864 865 866 867 868 869 870 871 872 873 874 875 876 877 878 879 880  
 881 882 883 884 885 886 887 888 889 890 891 892 893 894 895 896 897 898 899 900  
 901 902 903 904 905 906 907 908 909 910 911 912 913 914 915 916 917 918 919 920 921 922 923 924 925 926 927 928 929 930 931 932 933 934 935 936 937 938 939 940  
 941 942 943 944 945 946 947 948 949 950 951 952 953 954 955 956 957 958 959 960 961 962 963 964 965 966 967 968 969 970 971 972 973 974 975 976 977 978 979 980  
 981 982 983 984 985 986 987 988 989 990 991 992 993 994 995 996 997 998 999 1000