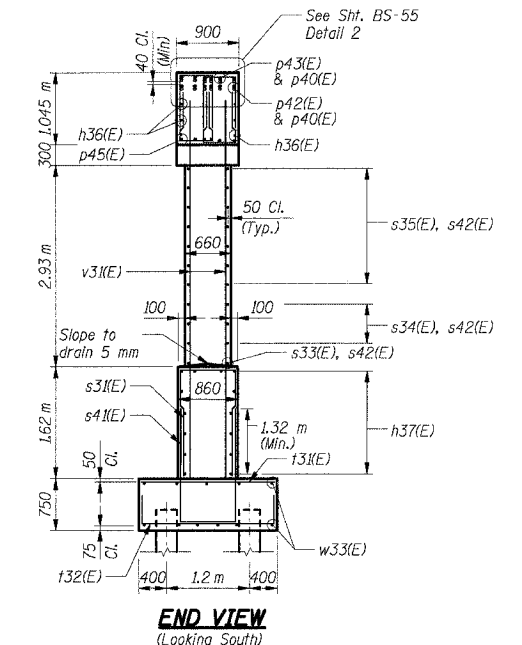
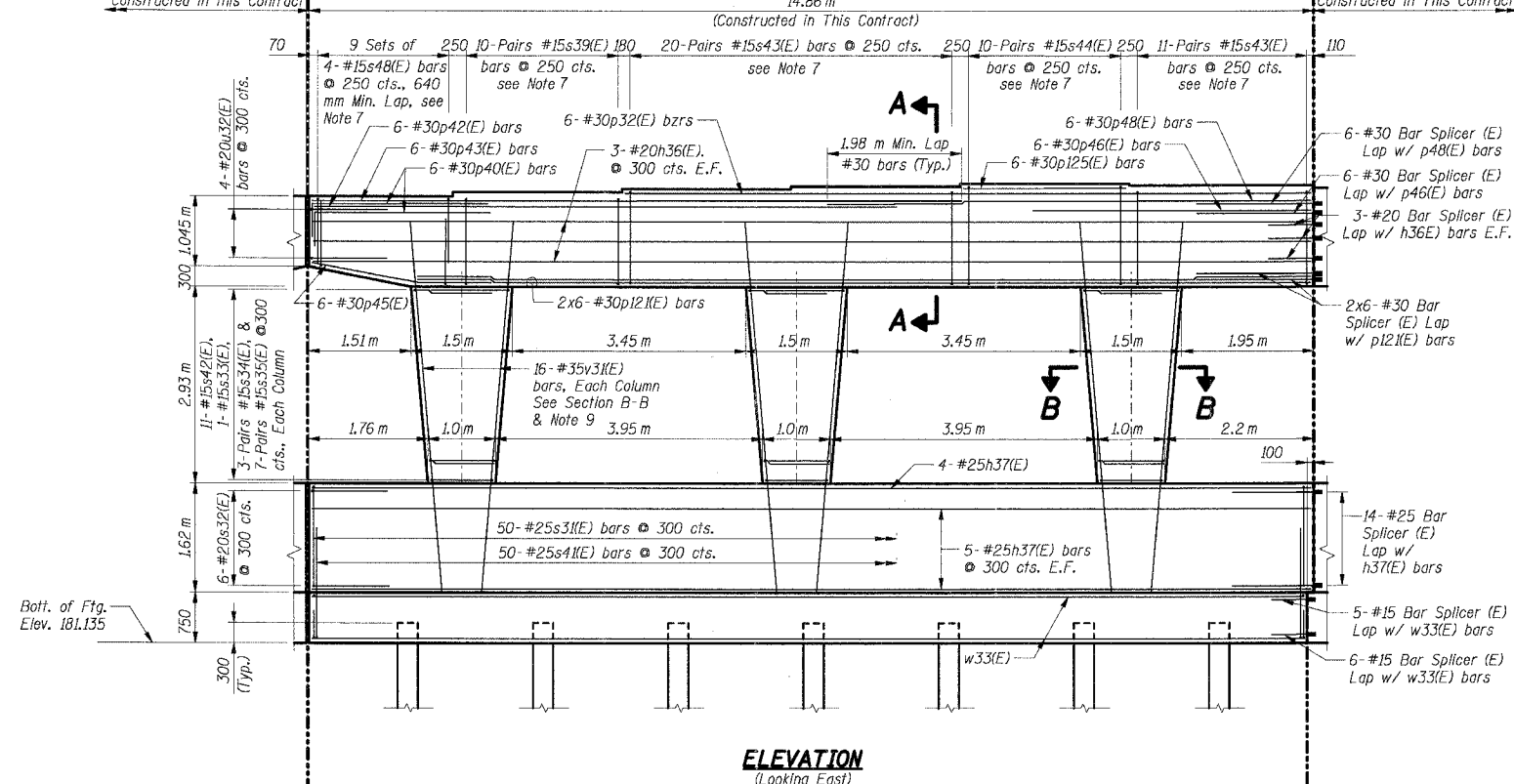
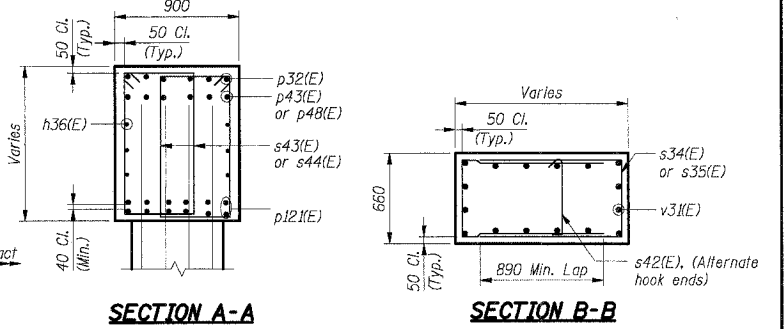
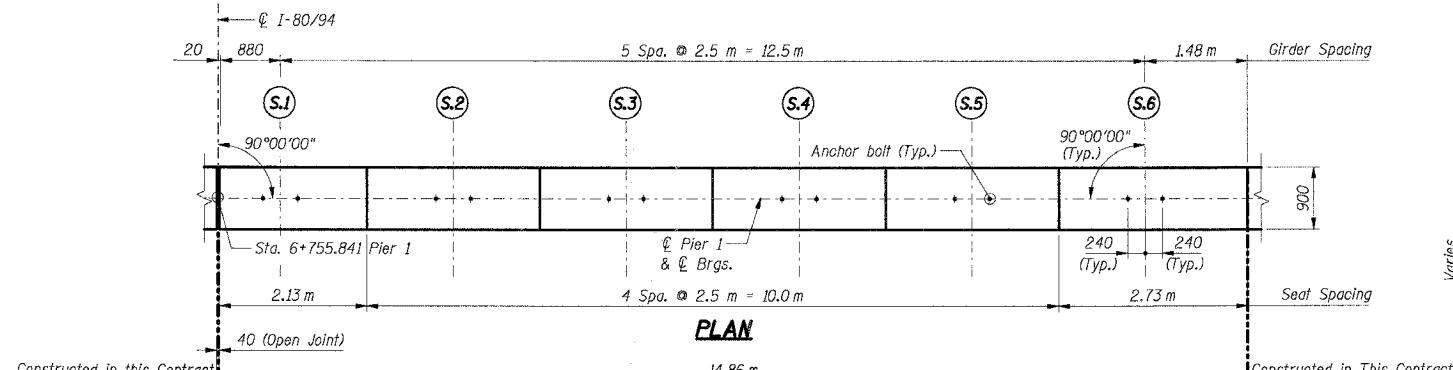


F.A.I. RTE.	SECTION	COUNTY	TOTAL SHEETS	SHEET NO.
80/94		COOK	631	490
STA.	TO STA.			
FED. ROAD DIST. NO.	ILLINOIS FED. AID PROJECT			
• (2425 & 2626) R-2			CONTRACT NO. 62111	

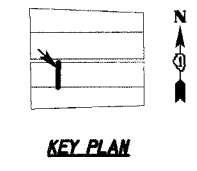
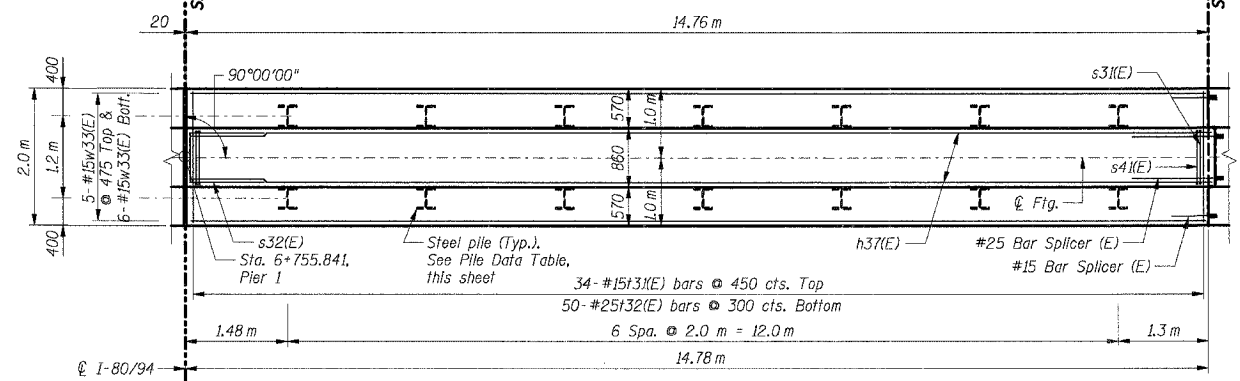
Girders	Elevations
S.1	187.780
S.2	187.840
S.3	187.890
S.4	187.930
S.5	187.970
S.6	187.945



PILE DATA

Type: HP 310 x 79
 Design Capacity: 600 kN
 Required Bearing: 900 kN
 Est. Length: 22 m
 No. Required: 14

- Notes:**
- All dimensions are in millimeters (mm) except as noted.
 - Reinforcement bars designated (E) shall be epoxy coated.
 - E.F. indicates Each Face.
 - All edges shall have 20 mm chamfers except as noted.
 - For bar splicer details see Sht. BS-56.
 - Work this sheet with Sht. BS-55.
 - Space reinforcement in cap to miss anchor bolts.
 - For Anchor Bolt details see Sht. BS-35.
 - All column "v" bars shall be firmly tied and fixed in position prior to casting crashwall portion of pier.



SHT. BS-48 OF 60

REVISIONS	NAME	DATE

ILLINOIS DEPARTMENT OF TRANSPORTATION
 F.A.I. ROUTE 80/94 (KINGERY EXPRESSWAY)
 EB & WB INSIDE LANES (MAINLINE) CONSTRUCTION
 1-80/94 OVER BURNHAM AVENUE
 STRUCTURE NO. 016-2791 STA. 6+772.591
 SECTION 1977-121-R
 COOK COUNTY

**PIER 1
 PLAN, ELEVATION & SECTION - III**

DATE: 7/18/2005
 DRAWN BY: NK
 CHECKED BY: TCU

TENG
 TENG & ASSOCIATES, INC.
 ENGINEERS/ARCHITECTS/PLANNERS
 CHICAGO, ILLINOIS

N:\PIES\672A.DGN, \PIES\672A.DGN, \PIES\672A.DGN
 F:\2-2005_0226\59 F:\2-2005_0226\59 F:\2-2005_0226\59
 12/31/05 10:18:19 AM 19 2021 2223 2425 2627 2829 30 31 3233 34 35 36 37 3839 40 41 4243 44 45 46 47 4849 50 51 52 53 54 55 56 57 5859 60 61 62 63