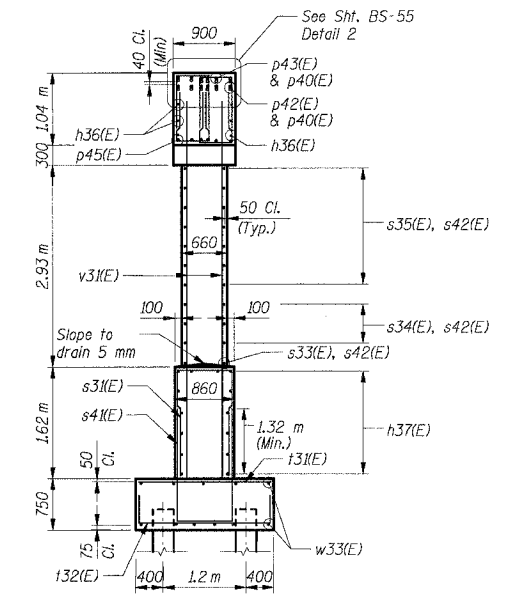
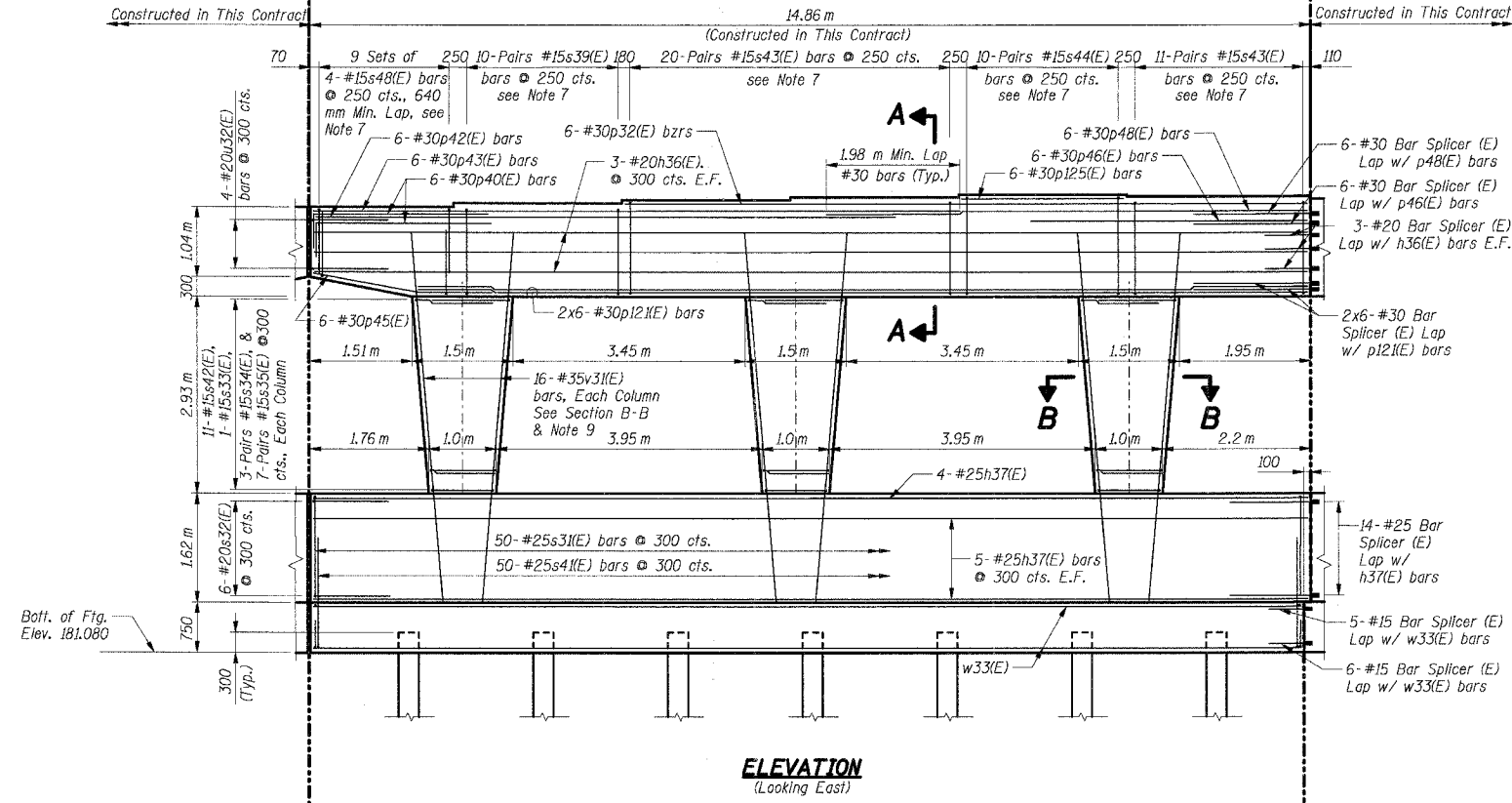
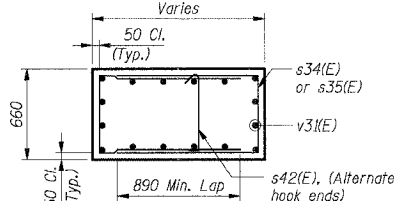
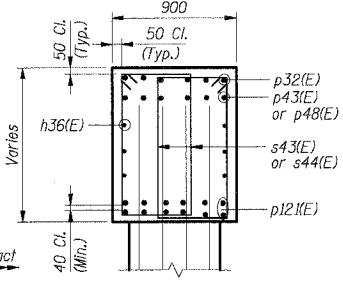
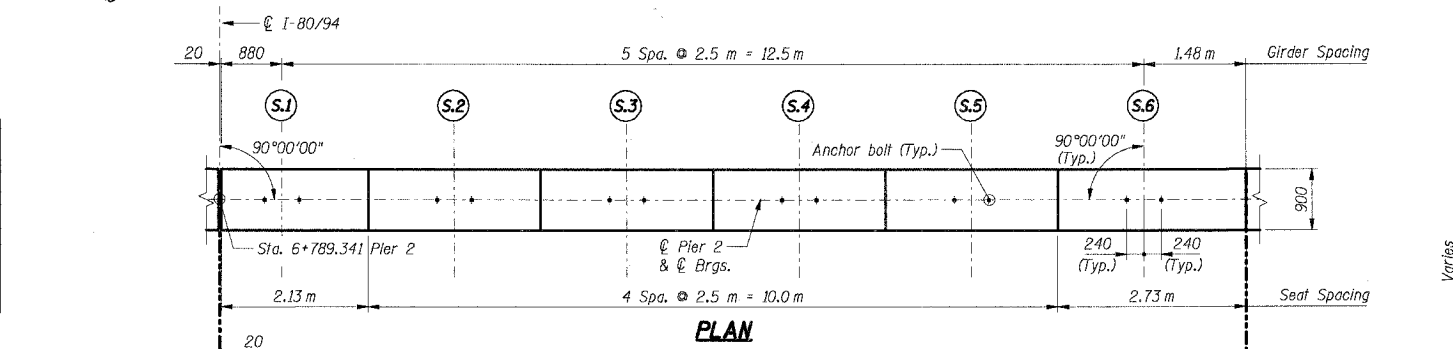


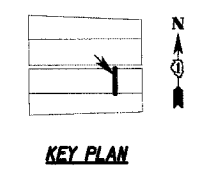
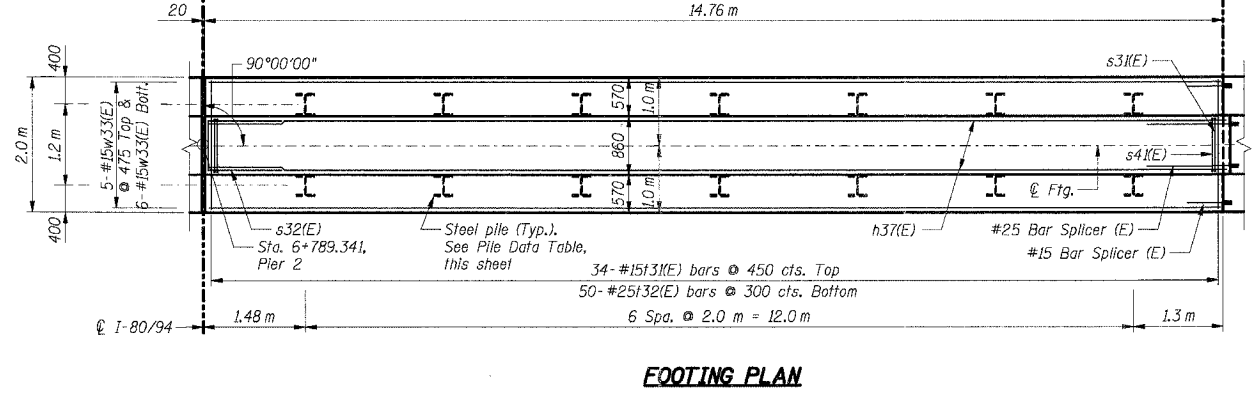
F.A.I. RTE.	SECTION	COUNTY	TOTAL SHEETS	SHEET NO.
80/94		COOK	631	494
STA.	TO STA.			
FED. ROAD DIST. NO.	ILLINOIS	FED. AID PROJECT		
• (2425 & 2626) R-2		CONTRACT NO. 62111		

Girders	Elevations
S.1	187.720
S.2	187.780
S.3	187.830
S.4	187.870
S.5	187.910
S.6	187.885



Type:	HP 310 x 79
Design Capacity:	600 kN
Required Bearing:	900 kN
Est. Length:	2.3 m
No. Required:	14

- Notes:**
- All dimensions are in millimeters (mm) except as noted.
 - Reinforcement bars designated (E) shall be epoxy coated.
 - E.F. indicates Each Face.
 - All edges shall have 20 mm chamfers except as noted.
 - For bar splicer details see Sht. BS-56.
 - Work this sheet with Sht. BS-55.
 - Space reinforcement in cap to miss anchor bolts.
 - For Anchor Bolt details see Sht. BS-35.
 - All column "v" bars shall be tied and firmly fixed in position prior to casting crashwall portion of pier.



NO.	NAME	DATE

ILLINOIS DEPARTMENT OF TRANSPORTATION
 F.A.I. ROUTE 80/94 (KINGERY EXPRESSWAY)
 EB & WB INSIDE LANES (MAINLINE) CONSTRUCTION
 I-80/94 OVER BURNHAM AVENUE
 STRUCTURE NO. 016-2791 STA. 6+772.591
 SECTION 1977-121-R
 COOK COUNTY

**PIER 2
 PLAN, ELEVATION & SECTION - III**

DATE: 7/18/2005
 DRAWN BY: NK
 CHECKED BY: TCU

TENG
 TENG & ASSOCIATES, INC.
 ENGINEERS/ARCHITECTS/PLANNERS
 CHICAGO, ILLINOIS

\PI99632A.DGN, \PI99632A.DGN, \PI99632A.DGN
 7-12-2005, 10:27:50
 I:\DOCUMENT\183750N\STRUCT\CONV\PI99632A.DGN
 12.3.4.56.78.9.10.11.12.13.14.15.16.17.18.19.20.21.22.23.24.25.26.27.28.29.30.31.32.33.34.35.36.37.38.39.40.41.42.43.44.45.46.47.48.49.50.51.52.53.54.55.56.57.58.59.60.61.62.63