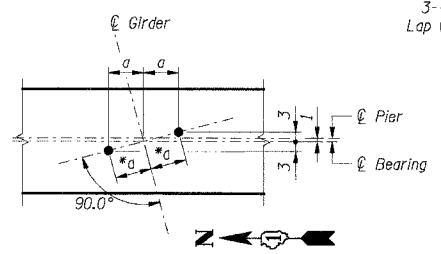
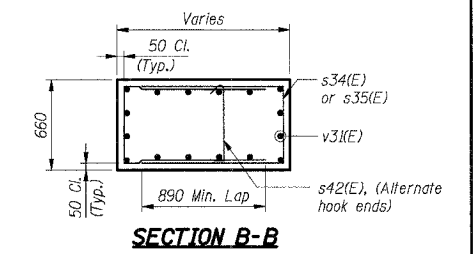
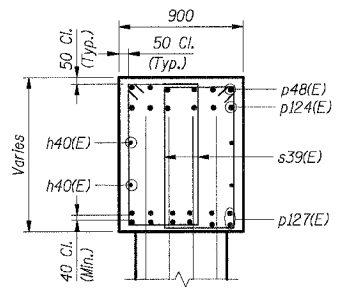
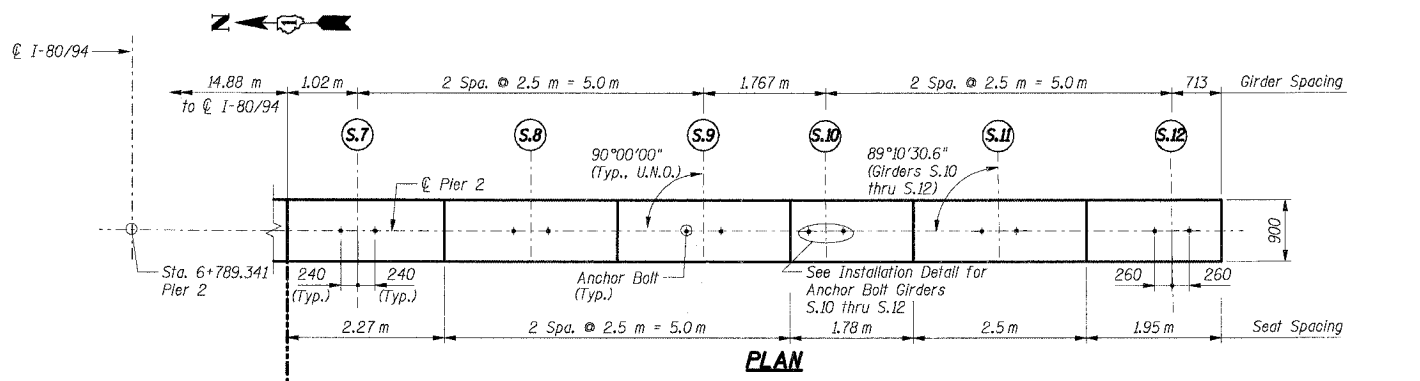


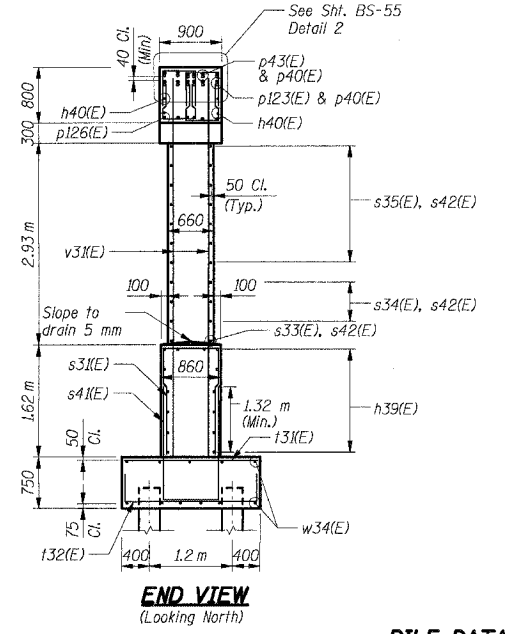
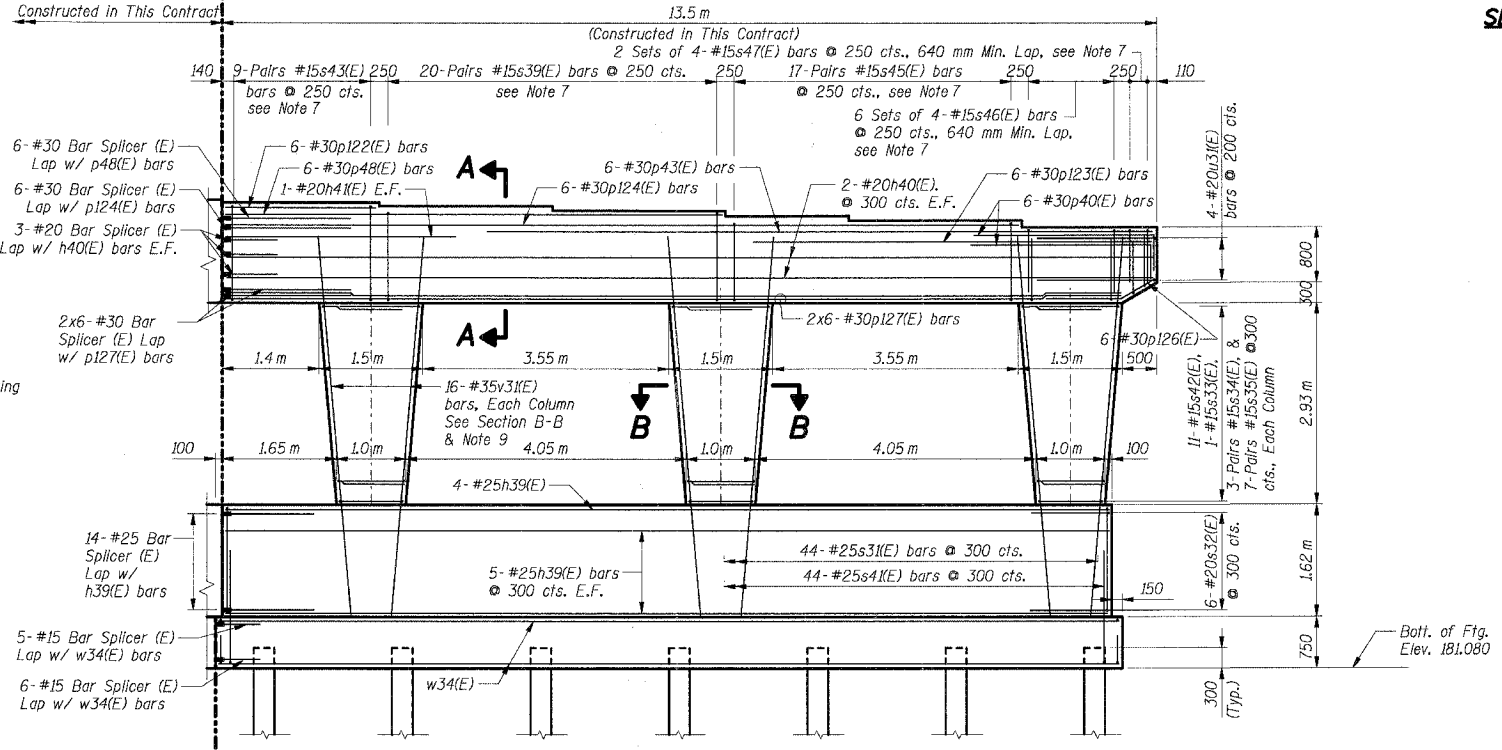
F.A.I. RTE.	SECTION	COUNTY	TOTAL SHEETS	SHEET NO.
80/94	•	COOK	631	495
STA.	TO STA.			
FED. ROAD DIST. NO.	ILLINOIS	FED. AID PROJECT		
• (2425 & 2626) R-2		CONTRACT NO. 62111		

Bearing Seat Elevation	
Girders	Elevations
S.7	187.845
S.8	187.795
S.9	187.730
S.10	187.650
S.11	187.585
S.12	187.480



* a = 260 mm for Girder N.12,
240 mm for Girders N.9 thru N.11

a = 260 mm for Girder N.12,
240 mm for Girders N.9 thru N.11

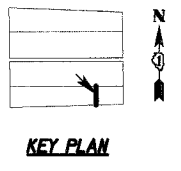
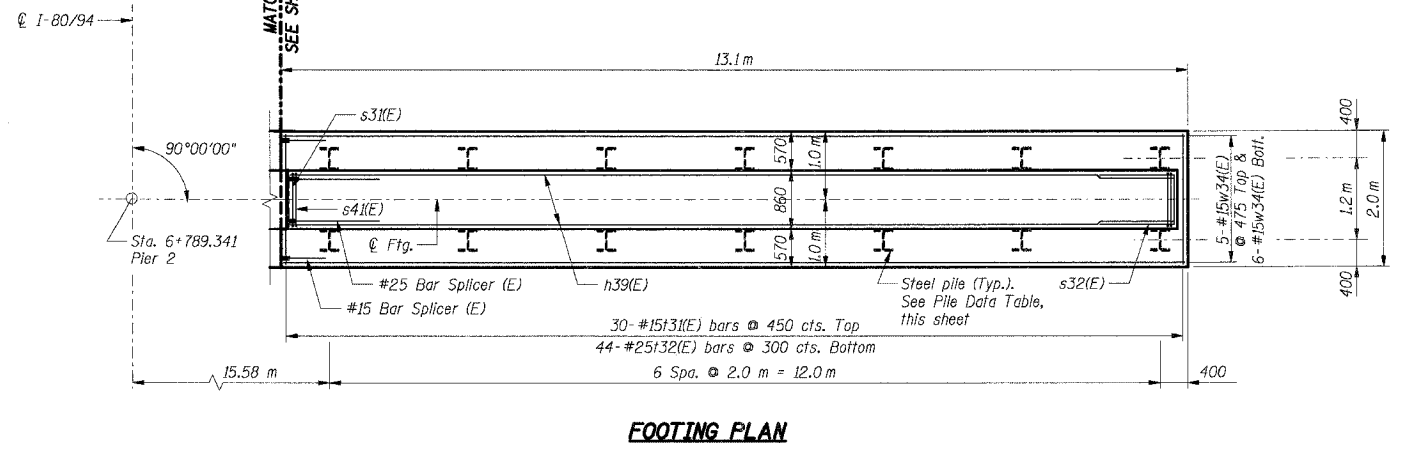


PILE DATA

Type: HP 310 x 79
 Design Capacity: 600 kN
 Required Bearing: 900 kN
 Est. Length: 23 m
 No. Required: 13 + 1 Test Pile

- Notes:
- All dimensions are in millimeters (mm) except as noted.
 - Reinforcement bars designated (E) shall be epoxy coated.
 - E.F. indicates Each Face.
 - All edges shall have 20 mm chamfers except as noted.
 - For bar splicer details see Sht. BS-56.
 - Work this sheet with Sht. BS-55.
 - Space reinforcement in cap to miss anchor bolts.
 - For Anchor Bolt details see Sht. BS-35.
 - All column "v" bars shall be firmly tied and fixed in position prior to casting crashwall portion of pier.

ILLINOIS DEPARTMENT OF TRANSPORTATION
 F.A.I. ROUTE 80/94 (KINGERY EXPRESSWAY)
 EB & WB INSIDE LANES (MAINLINE) CONSTRUCTION
 I-80/94 OVER BURNHAM AVENUE
 STRUCTURE NO. 016-2791 STA. 6+772.591
 SECTION 1977-121-R
 COOK COUNTY



SHT. BS-53 OF 60

REVISIONS	
NAME	DATE

PIER 2
 PLAN, ELEVATION & SECTION - IV

DATE: 7/18/2005

DRAWN BY: NK
 CHECKED BY: TCU

TENG

TENG & ASSOCIATES, INC.
 ENGINEERS/ARCHITECTS/PLANNERS
 CHICAGO, ILLINOIS

N:\P95\62A.DGN, N:\P95\62A.DGN, N:\P95\62A.DGN, N:\P95\62A.DGN
 F:\2005\1022162
 2 3 4 5 6 7 8 9 10 11 12 13 14 15 16 17 18 19 20 21 22 23 24 25 26 27 28 29 30 31 32 33 34 35 36 37 38 39 40 41 42 43 44 45 46 47 48 49 50 51 52 53 54 55 56 57 58 59 60 61 62 63