

F.A.I.	SECTION	COUNTY	TOTAL SHEETS	SHEET NO.
94/90	2003-028F	COOK	419	14
STA.		TO STA.		
FED. ROAD DIST. NO.		ILLINOIS	FED. AID PROJECT	
62580				

**CURVE HL-1
SPIRAL SEGMENT**
 DELTA=71° 15' 49.43' LS=150.00 FT DELTA(S)=03° 22' 30.00'
 X=149.95 FT Y=02.94 FT P=0.74 FT
 K=74.99 FT ST=50.02 FT LT=100.02 FT
 LC =149.98 FT TS=988.37 FT ES=294.27 FT

CURVE EHB-1
 PI STA. = 75+08.28 N:1885747.83 E:1175493.82
 Δ = 1° 37' 12" (LT)
 D = 0° 31' 33"
 R = 10,896.14'
 T = 154.06'
 L = 308.10'
 E = 1.09'
 e = N/A
 T.R. = N/A
 S.E. RUN = 0.053 FT/FT
 P.C. STA. = 73+54.22 N:1885593.83 E:1175498.00
 P.T. STA. = 76+62.32 N:1885901.66 E:1175485.30

CURVE EHB-2
 PI STA. = 78+55.79 N:1886094.82 E:1175474.59
 Δ = 19° 50' 45" (LT)
 D = 5° 10' 51"
 R = 1,105.89'
 T = 193.46'
 L = 383.05'
 E = 16.79'
 e = N/A
 T.R. = N/A
 S.E. RUN = 0.053 FT/FT
 P.C. STA. = 76+62.32 N:1885901.66 E:1175485.30
 P.T. STA. = 80+45.37 N:1886272.88 E:1175398.93

CURVE EHB-3
 PI STA. = 81+96.84 N:1886412.29 E:1175339.70
 Δ = 13° 28' 11" (LT)
 D = 4° 28' 01"
 R = 1,282.65'
 T = 151.47'
 L = 301.54'
 E = 8.91'
 e = N/A
 T.R. = N/A
 S.E. RUN = 0.053 FT/FT
 P.C. STA. = 80+45.37 N:1886272.88 E:1175398.93
 P.T. STA. = 83+46.91 N:1886534.07 E:1175249.63

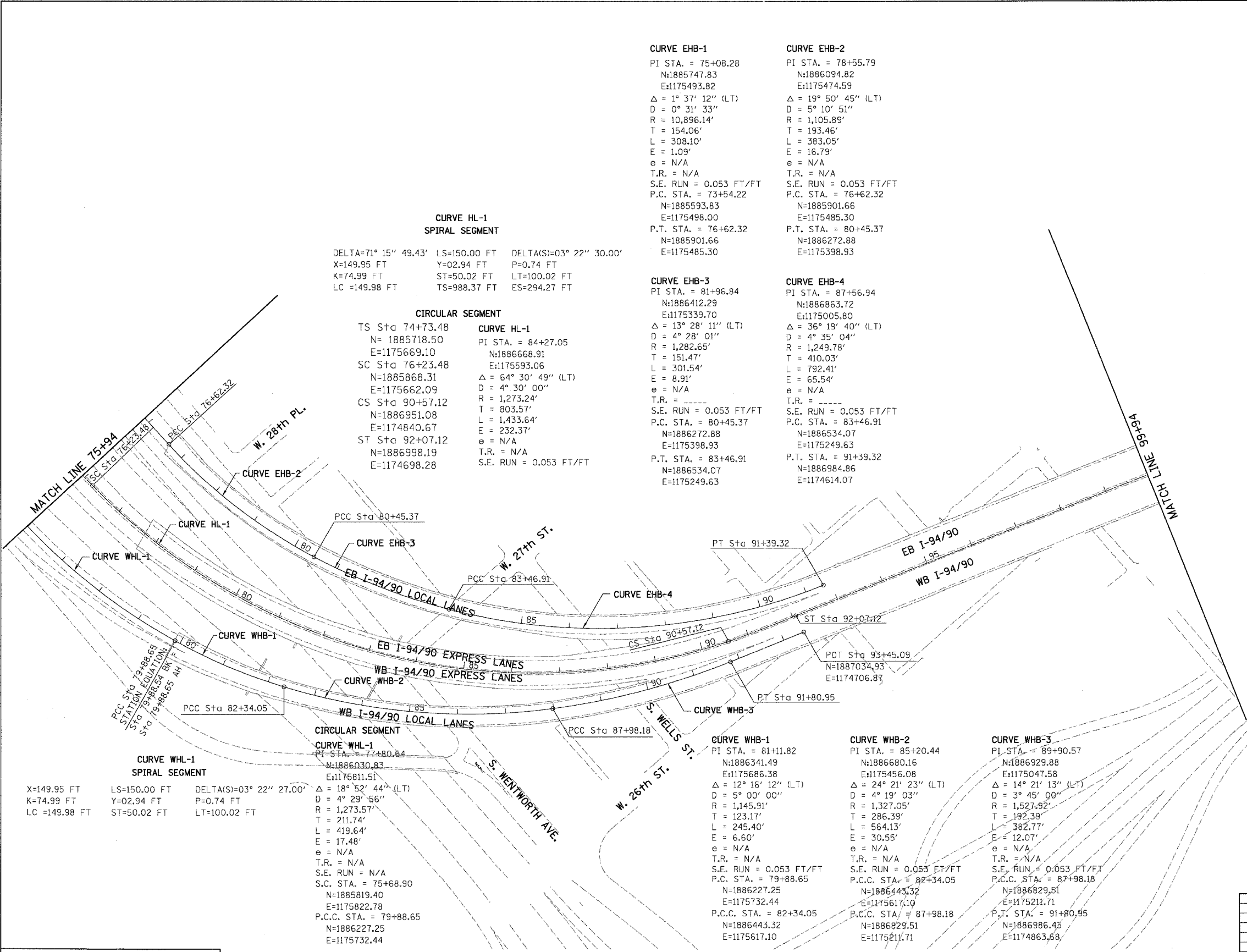
CURVE EHB-4
 PI STA. = 87+56.94 N:1886863.72 E:1175005.80
 Δ = 36° 19' 40" (LT)
 D = 4° 35' 04"
 R = 1,249.78'
 T = 410.03'
 L = 792.41'
 E = 65.54'
 e = N/A
 T.R. = N/A
 S.E. RUN = 0.053 FT/FT
 P.C. STA. = 83+46.91 N:1886534.07 E:1175249.63
 P.T. STA. = 91+39.32 N:1886984.86 E:1174614.07

CURVE WHB-1
 PI STA. = 71+80.84 N:1886030.83 E:1175811.51
 Δ = 18° 52' 44" (LT)
 D = 4° 29' 56"
 R = 1,273.57'
 T = 211.74'
 L = 419.64'
 E = 17.48'
 e = N/A
 T.R. = N/A
 S.E. RUN = N/A
 S.C. STA. = 75+68.90 N:1885819.40 E:1175822.78
 P.C.C. STA. = 79+88.65 N:1886227.25 E:1175732.44

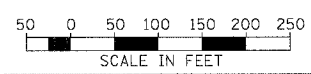
CURVE WHB-2
 PI STA. = 85+20.44 N:1886680.16 E:1175456.08
 Δ = 24° 21' 23" (LT)
 D = 4° 19' 03"
 R = 1,327.05'
 T = 286.39'
 L = 564.13'
 E = 30.55'
 e = N/A
 T.R. = N/A
 S.E. RUN = 0.053 FT/FT
 P.C.C. STA. = 82+34.05 N:1886443.32 E:1175617.10

CURVE WHB-3
 PI STA. = 89+90.57 N:1886929.88 E:1175047.58
 Δ = 14° 21' 13" (LT)
 D = 3° 45' 00"
 R = 1,527.92'
 T = 192.39'
 L = 382.77'
 E = 12.07'
 e = N/A
 T.R. = N/A
 S.E. RUN = 0.053 FT/FT
 P.C.C. STA. = 87+98.18 N:1886829.51 E:1175211.71

CURVE WHL-1
 PI STA. = 71+80.84 N:1886030.83 E:1175811.51
 Δ = 18° 52' 44" (LT)
 D = 4° 29' 56"
 R = 1,273.57'
 T = 211.74'
 L = 419.64'
 E = 17.48'
 e = N/A
 T.R. = N/A
 S.E. RUN = N/A
 S.C. STA. = 75+68.90 N:1885819.40 E:1175822.78
 P.C.C. STA. = 79+88.65 N:1886227.25 E:1175732.44



BOWMAN, BARRETT & ASSOCIATES INC
 CONSULTING ENGINEERS
 Chicago, Illinois
 312.228.0100
 www.bbainc.com



REVISIONS	
NAME	DATE

ILLINOIS DEPARTMENT OF TRANSPORTATION
 F.A.I. 94/90 (DAN RYAN EXPRESSWAY)
 NB DAN RYAN ELEVATED BRIDGE
 REPAIR FROM 15TH TO 28TH STREETS
 ALIGNMENT PLAN
 STA. 75+94 TO STA. 99+94

SCALE: 1"=100'
 DATE: 7/22/2005

DRAWN BY: RA
 CHECKED BY: RS

CAL02
 7/21/2005