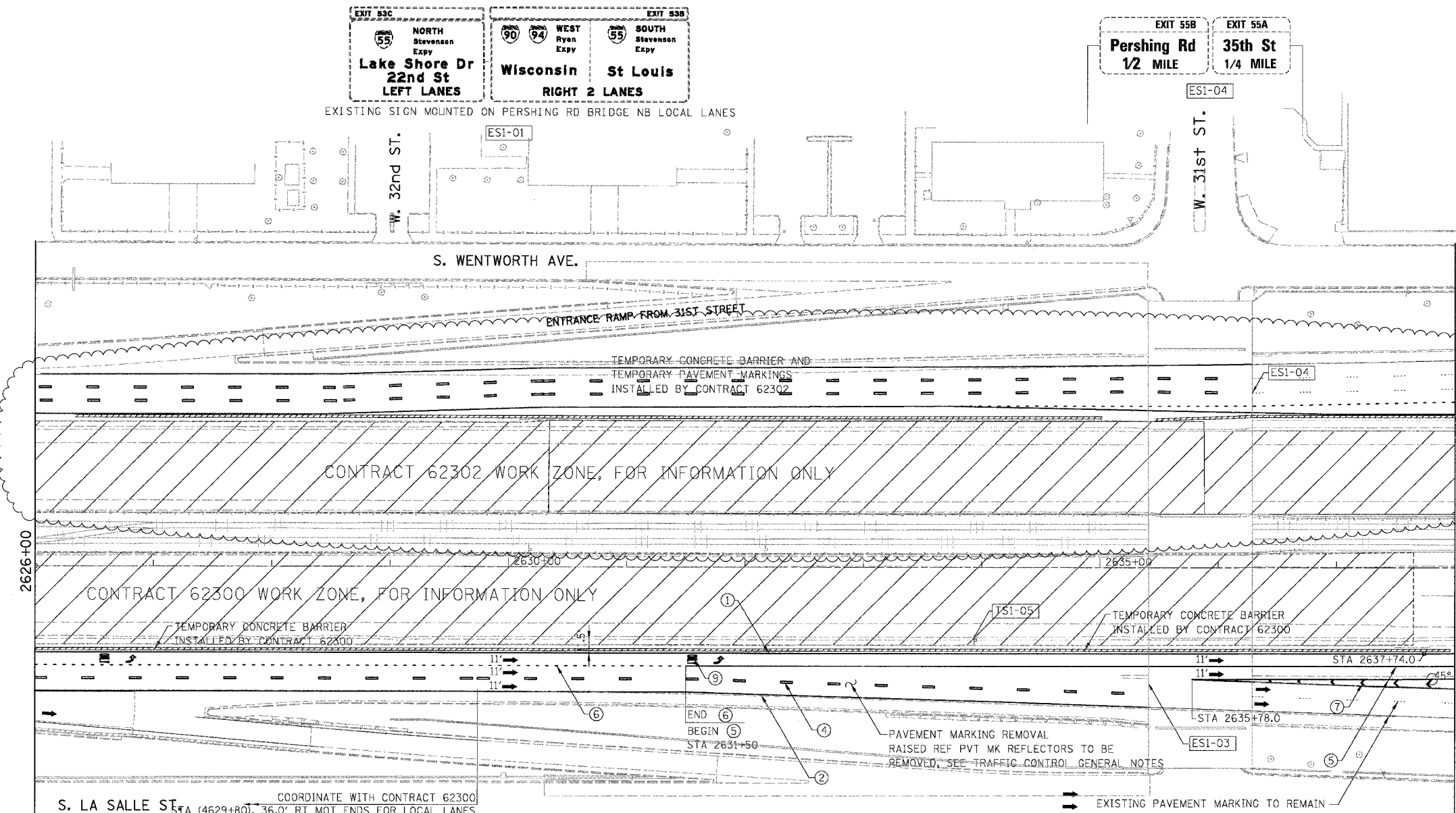
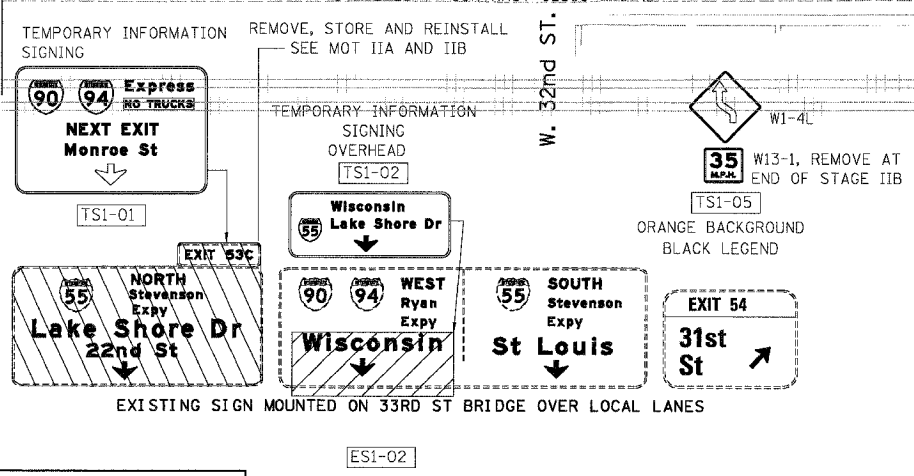


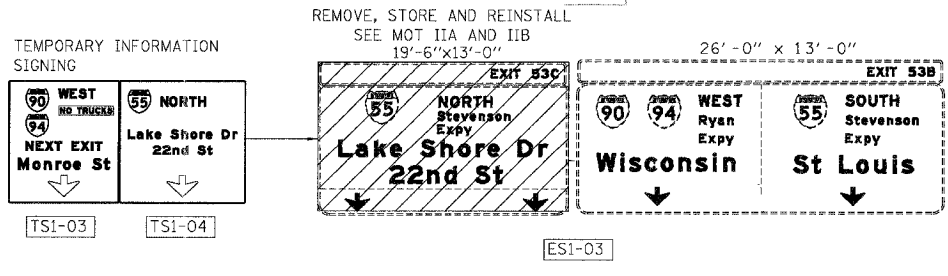
F.A.I.	SECTION	COUNTY	TOTAL SHEETS	SHEET NO.
94/90	2003-028F	COOK	419	29
STA.		TO STA.		
FED. ROAD DIST. NO.		ILLINOIS	FED. AID PROJECT	
62580				



- LEGEND**
- WORK ZONE
  - DIRECTION OF TRAFFIC
  - DRUM OR BARRICADE TYPE II WITH STEADY BURN LIGHT
  - IMPACT ATTENUATORS, TEMPORARY (NON-REDIRECTIVE), TEST LEVEL 3
  - BARRICADE TYPE III
  - TEMPORARY CONCRETE BARRIER
  - LINE 4" (YELLOW EDGE LINE)
  - LINE 4" (WHITE EDGE LINE)
  - LINE 4" (SKIP DASH, 6' SKIP - 2' DASH, WHITE)
  - LINE 5" (SKIP DASH, 30' SKIP - 10' DASH, WHITE)
  - LINE 8" (WHITE LINE)
  - LINE 8" (SKIP DASH, 12' SKIP - 3' DASH, WHITE)
  - LINE 12" (DIAGONAL, 30' C-C)
  - LINE 12" (DIAGONAL, 500' C-C)
  - LETTERS AND SYMBOLS
  - EXISTING OVERHEAD OR CANTILEVER SIGNS
  - EXISTING POST MOUNTED SIGNS
  - TEMPORARY SIGNS



**NOTE:**  
 WB I-94/90 TEMPORARY INFORMATION SIGNING, PANEL COVERING AND PANEL REPLACING TO BE REMOVED AT END OF STAGE IA, UNLESS OTHERWISE SPECIFIED.  
 WB I-94/90 TEMPORARY PAVEMENT MARKINGS INSTALLED IN STAGE I TO REMAIN TO END OF STAGE IA, UNLESS OTHERWISE SPECIFIED.

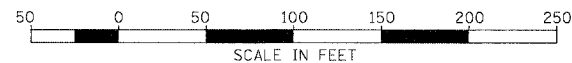


**NOTE:**  
 ALL PAVEMENT MARKINGS ON THIS SHEET WILL BE EPOXY PAVEMENT MARKING, UNLESS OTHERWISE NOTED.

REVISIONS	
NAME	DATE
ADDENDUM 1	9/6/05

ILLINOIS DEPARTMENT OF TRANSPORTATION  
 F.A.I. 94/90 (DAN RYAN EXPRESSWAY)  
 NB DAN RYAN ELEVATED BRIDGE  
 REPAIR FROM 15TH TO 28TH STREETS  
 MAINTENANCE OF TRAFFIC PLAN - STAGE I  
 STA. 2626+00 TO STA. 2638+00  
 SCALE: 1"=50'  
 DATE: 8/12/2005  
 DRAWN BY: RA  
 CHECKED BY: RS

BOWMAN, BARRETT & ASSOCIATES INC.  
 CONSULTING ENGINEERS  
 Chicago, Illinois  
 312.228.0100  
 www.bbainc.com



11/20/05