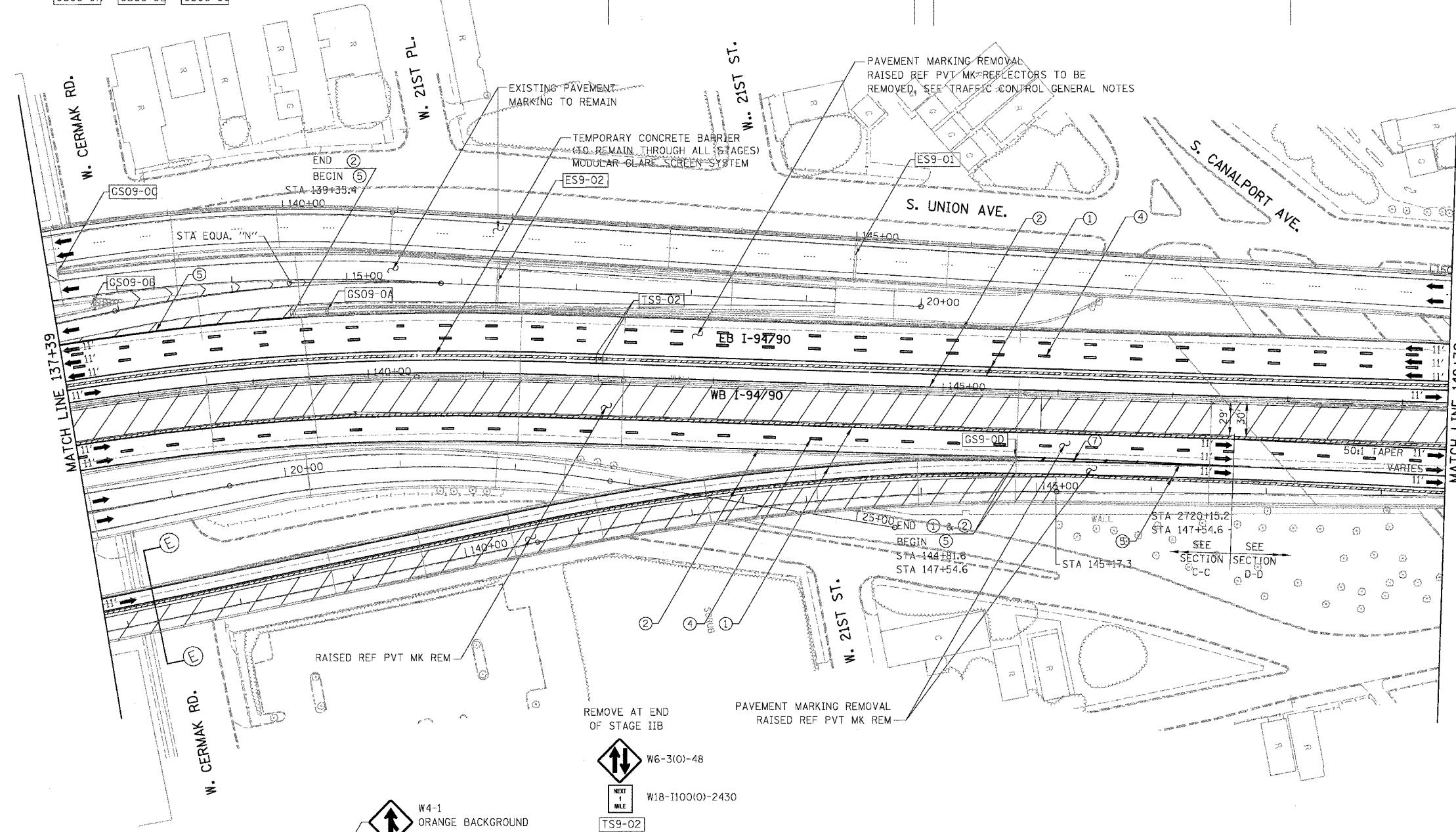
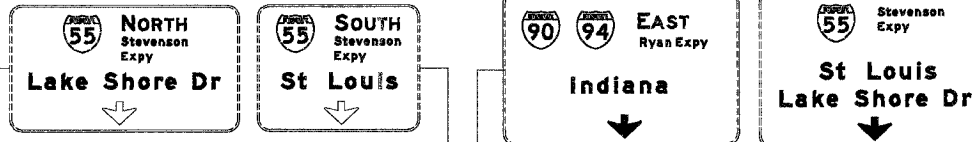


F.A.I.	SECTION	COUNTY	TOTAL SHEETS	SHEET NO.
94/90	2003-028F	COOK	419	37
STA.	TO STA.			
FED. ROAD DIST. NO.	ILLINOIS	FED. AID PROJECT		

62580

NOTE:  
EB TEMPORARY PAVEMENT MARKINGS INSTALLED IN STAGE I TO REMAIN TO END OF STAGE IIB, UNLESS OTHERWISE SPECIFIED



- LEGEND**
- WORK ZONE
  - DIRECTION OF TRAFFIC
  - DRUM OR BARRICADE TYPE II WITH STEADY BURN LIGHT
  - IMPACT ATTENUATORS, TEMPORARY (NON-REDIRECTIVE), TEST LEVEL 3
  - BARRICADE TYPE III
  - TEMPORARY CONCRETE BARRIER
  - LINE 4" (YELLOW EDGE LINE)
  - LINE 4" (WHITE EDGE LINE)
  - LINE 4" (SKIP DASH, 6' SKIP - 2' DASH, WHITE)
  - LINE 5" (SKIP DASH, 30' SKIP - 10' DASH, WHITE)
  - LINE 8" (WHITE LINE)
  - LINE 8" (SKIP DASH, 12' SKIP - 3' DASH, WHITE)
  - LINE 12" (DIAGONAL, 30' C-C)
  - LINE 12" (DIAGONAL, 50' C-C)
  - LETTERS AND SYMBOLS
  - EXISTING OVERHEAD OR CANTILEVER SIGNS
  - EXISTING POST MOUNTED SIGNS
  - TEMPORARY SIGNS

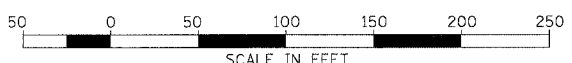


NOTE:  
WB I-94/90 TEMPORARY INFORMATION SIGNING, PANEL COVERING AND PANEL REPLACING TO BE REMOVED AT END OF STAGE IA, UNLESS OTHERWISE SPECIFIED  
WB I-94/90 TEMPORARY PAVEMENT MARKINGS INSTALLED IN STAGE I TO REMAIN TO END OF STAGE IA, UNLESS OTHERWISE SPECIFIED

NOTE:  
ALL PAVEMENT MARKINGS ON THIS SHEET WILL BE EPOXY PAVEMENT MARKING, UNLESS OTHERWISE NOTED. MOT-09

REVISIONS		ILLINOIS DEPARTMENT OF TRANSPORTATION F.A.I. 94/90 (DAN RYAN EXPRESSWAY) NB DAN RYAN ELEVATED BRIDGE REPAIR FROM 15TH TO 28TH STREETS MAINTENANCE OF TRAFFIC PLAN - STAGE I STA. 137+39 TO STA. 149+39
NAME	DATE	
		SCALE: 1"=50'
		DATE: 7/22/2005
		DRAWN BY: RA
		CHECKED BY: RS

BOWMAN, BARRETT & ASSOCIATES INC  
CONSULTING ENGINEERS  
Chicago, Illinois  
312.228.0100  
www.bbandainc.com



7/27/2005 2:45:34 PM