

F.A.I.	SECTION	COUNTY	TOTAL SHEETS	SHEET NO.
94/90	2003-028F	COOK	419	75
STA.	TO STA.			
FED. ROAD DIST. NO.	ILLINOIS	FED. AID PROJECT		
62580				

U.s. Cellular Field
TOURIST INFO
Turn Radio To
1620 AM

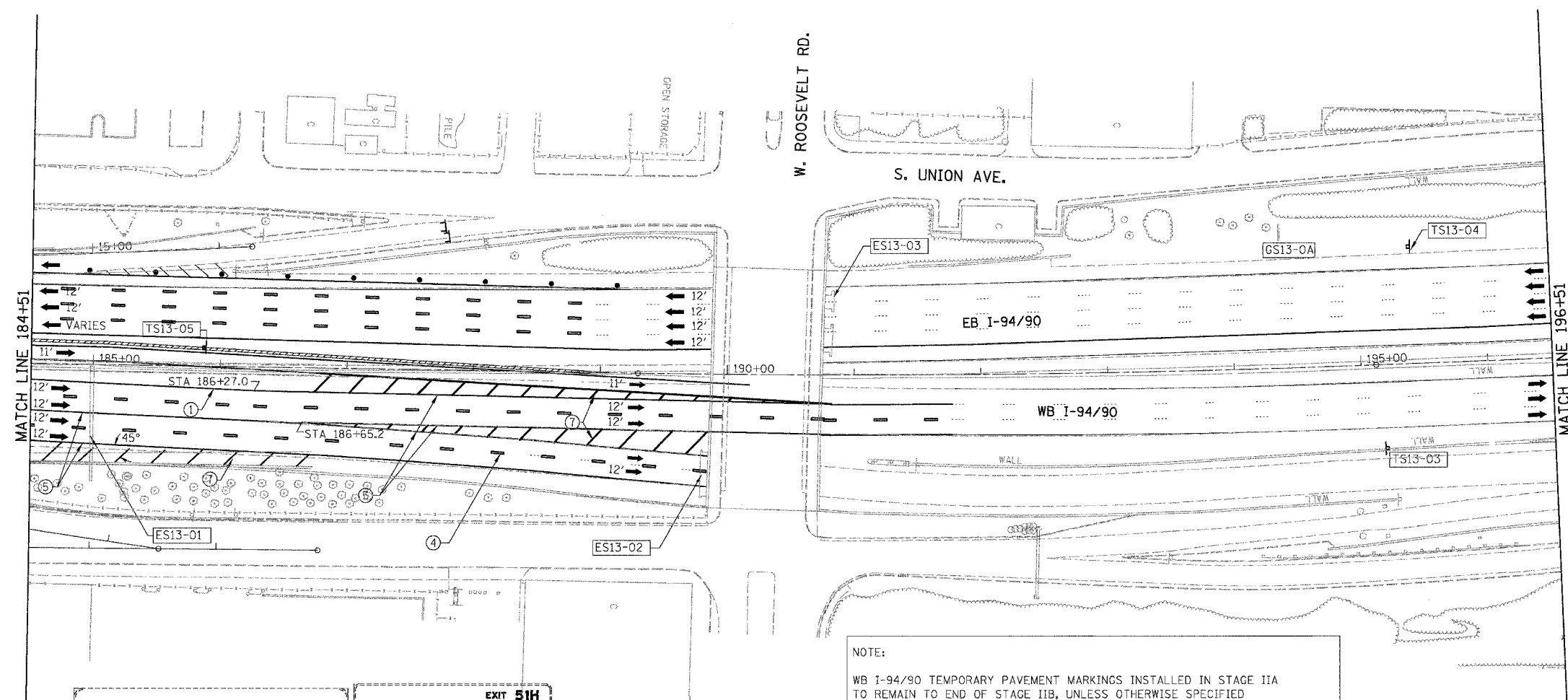
GS13-0A

EXIT 53
Stevenson Expy
St. Louis
Lake Shore Dr
1/2 MILE

EXIT 52C
18th St
3/4 MILE

ES13-03
BRIDGE MOUNTED

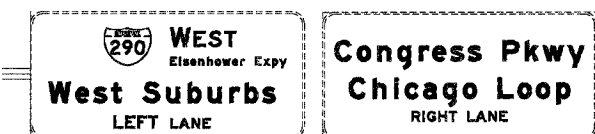
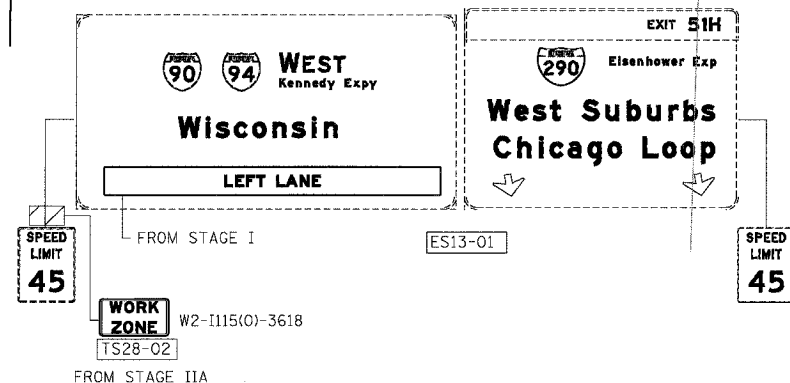
W4-2
TS13-04
FROM STAGE I



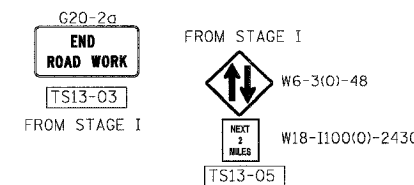
LEGEND

- WORK ZONE
- DIRECTION OF TRAFFIC
- DRUM OR BARRICADE TYPE II WITH STEADY BURN LIGHT
- IMPACT ATTENUATORS, TEMPORARY (NON-REDIRECTIVE), TEST LEVEL 3
- BARRICADE TYPE III
- TEMPORARY CONCRETE BARRIER
- ① LINE 4" (YELLOW EDGE LINE)
- ② LINE 4" (WHITE EDGE LINE)
- ③ LINE 4" (SKIP DASH, 6' SKIP - 2' DASH, WHITE)
- ④ LINE 5" (SKIP DASH, 30' SKIP - 10' DASH, WHITE)
- ⑤ LINE 8" (WHITE LINE)
- ⑥ LINE 8" (SKIP DASH, 12' SKIP - 3' DASH, WHITE)
- ⑦ LINE 12" (DIAGONAL, 30' C-C)
- ⑧ LINE 12" (DIAGONAL, 500' C-C)
- ⑨ LETTERS AND SYMBOLS
- ESx-xx EXISTING OVERHEAD OR CANTILEVER SIGNS
- GSx-xx EXISTING POST MOUNTED SIGNS
- TSx-xx TEMPORARY SIGNS

NOTE:
WB I-94/90 TEMPORARY PAVEMENT MARKINGS INSTALLED IN STAGE IIA TO REMAIN TO END OF STAGE IIB, UNLESS OTHERWISE SPECIFIED



ES13-02
BRIDGE MOUNTED



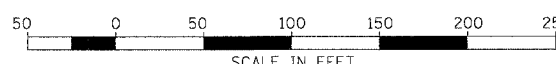
NOTE:
ALL PAVEMENT MARKINGS ON THIS SHEET WILL BE PAVEMENT MARKING TAPE, TYPE III, UNLESS OTHERWISE NOTED.

REVISIONS		DATE
NAME		

ILLINOIS DEPARTMENT OF TRANSPORTATION
F.A.I. 94/90 (DAN RYAN EXPRESSWAY)
NB DAN RYAN ELEVATED BRIDGE
REPAIR FROM 15TH TO 28TH STREETS
MAINTENANCE OF TRAFFIC PLAN - STAGE IIB
STA. 184+51 TO STA. 196+51

SCALE: 1"=50'
DATE: 7/22/2005

DRAWN BY: RA
CHECKED BY: RS



BOWMAN, BARRETT & ASSOCIATES INC.
CONSULTING ENGINEERS
Chicago, Illinois
312.228.0100
www.bbandainc.com

7/21/2005 3:26:54 PM