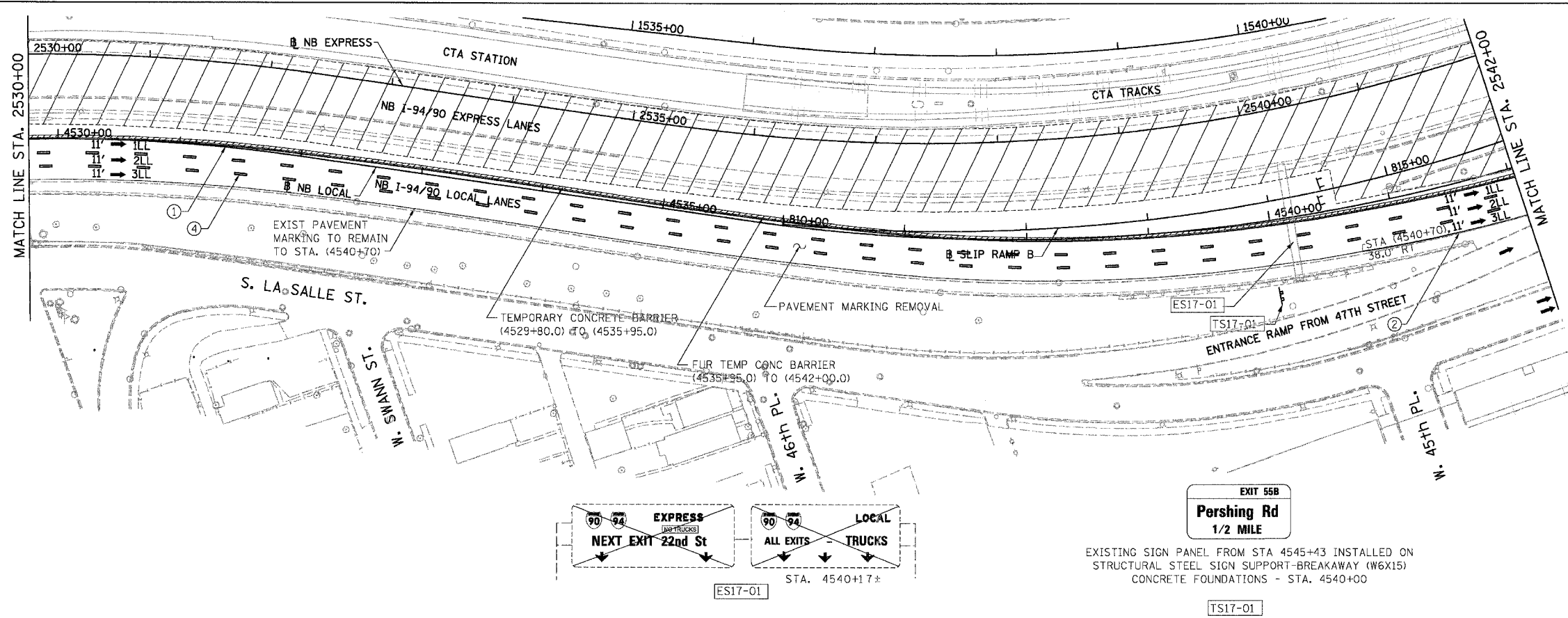
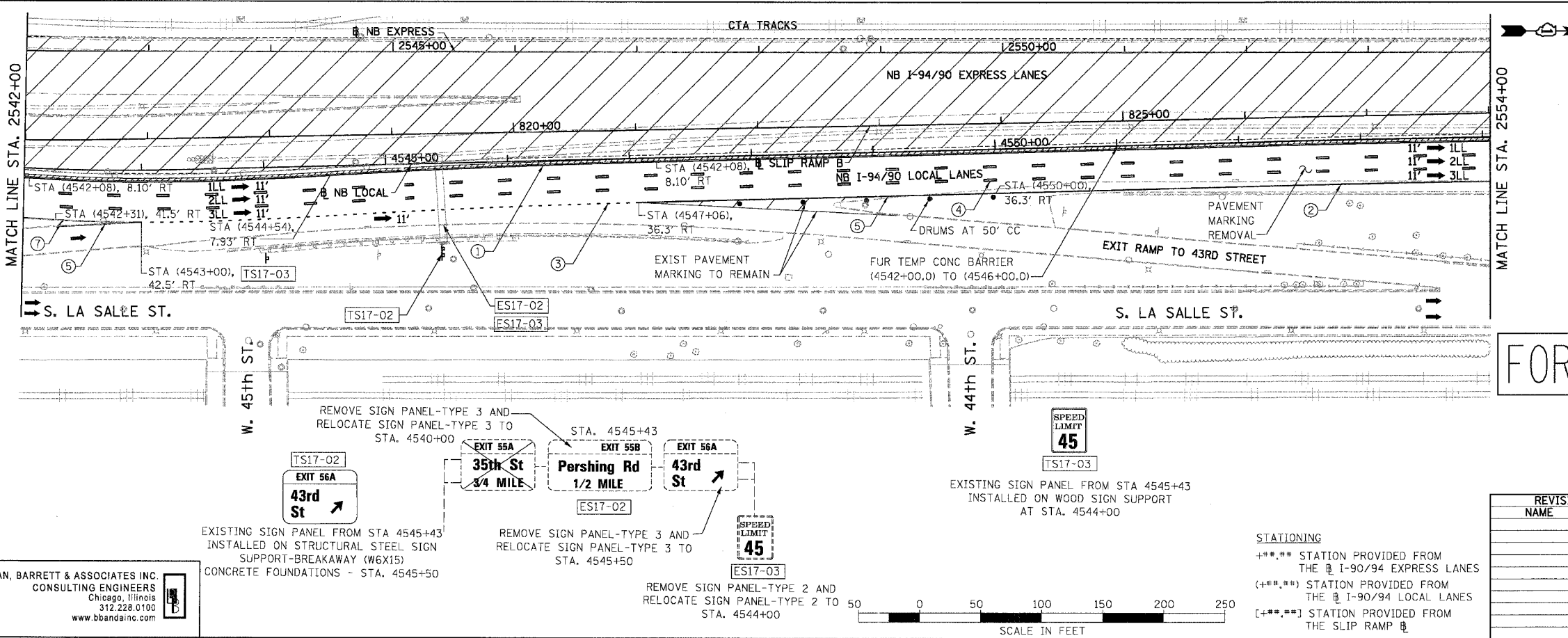


F.A.I.	SECTION	COUNTY	TOTAL SHEETS	SHEET NO.
94/90	*	COOK	419	76
STA. 2530+00		TO STA. 2554+00		
FED. ROAD DIST. NO.		ILLINOIS FED. AID PROJECT		
62580		*(1818, ETC., 2324.6-1P/R-8		



- LEGEND**
- WORK ZONE
 - TEMPORARY PAVEMENT
 - ILL TRAFFIC LANE & DIRECTION OF TRAFFIC
 - DRUM OR BARRICADE TYPE II WITH STEADY BURN LIGHT
 - IMPACT ATTENUATORS, TEMPORARY (NON-REDIRECTIVE), TEST LEVEL 3
 - BARRICADE TYPE III
 - TEMPORARY CONCRETE BARRIER
 - ① LINE 4" (YELLOW EDGE LINE)
 - ② LINE 4" (WHITE EDGE LINE)
 - ③ LINE 4" (SKIP DASH, 6' SKIP - 2' DASH, WHITE)
 - ④ LINE 5" (SKIP DASH, 30' SKIP - 10' DASH, WHITE)
 - ⑤ LINE 8" (WHITE GORE LINE)
 - ⑥ LINE 8" (SKIP DASH, 12' SKIP - 3' DASH, WHITE)
 - ⑦ LINE 12" (DIAGONAL, 30' C-C)
 - ⑧ LINE 12" (DIAGONAL, 500' C-C)
 - ⑨ LETTERS AND SYMBOLS
 - ESX-XX EXISTING SIGNS
 - TSX-XX TEMPORARY SIGNS



FOR INFORMATION ONLY

NOTE:
ALL PAVEMENT MARKINGS ON THIS SHEET WILL BE PAVEMENT MARKING TAPE, TYPE III, UNLESS OTHERWISE NOTED.

REVISIONS		DATE
NAME		

ILLINOIS DEPARTMENT OF TRANSPORTATION
F.A.I. 94/90 (DAN RYAN EXPRESSWAY)
31ST STREET TO 71ST STREET
NB EXPRESS LANE RECONSTRUCTION
MAINTENANCE OF TRAFFIC PLAN STAGE 1
NORTHBOUND STA. 2530+00 TO STA. 2554+00
SCALE: 1"=50'
DATE: 7/22/2005
DRAWN BY: RA
CHECKED BY: RS

BOWMAN, BARRETT & ASSOCIATES INC.
CONSULTING ENGINEERS
Chicago, Illinois
312.228.0100
www.bbainc.com

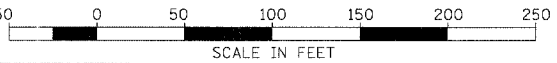
EXISTING SIGN PANEL FROM STA 4545+43
INSTALLED ON STRUCTURAL STEEL SIGN
SUPPORT-BREAKAWAY (W6X15)
CONCRETE FOUNDATIONS - STA. 4545+50

REMOVE SIGN PANEL-TYPE 3 AND
RELOCATE SIGN PANEL-TYPE 3 TO
STA. 4545+50

REMOVE SIGN PANEL-TYPE 2 AND
RELOCATE SIGN PANEL-TYPE 2 TO
STA. 4544+00

EXISTING SIGN PANEL FROM STA 4545+43
INSTALLED ON WOOD SIGN SUPPORT
AT STA. 4544+00

STATIONING
+###.## STATION PROVIDED FROM
THE I-90/94 EXPRESS LANES
(+###.##) STATION PROVIDED FROM
THE I-90/94 LOCAL LANES
[+###.##] STATION PROVIDED FROM
THE SLIP RAMP



7/19/2005 2:11:06 PM