

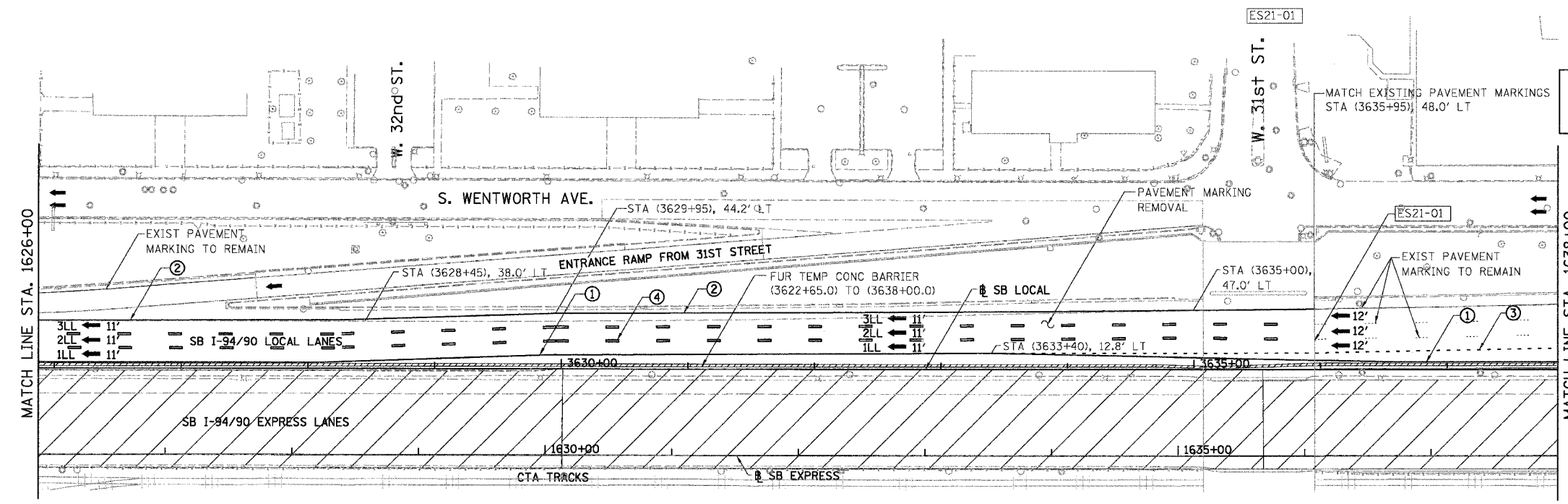
F.A.I.	SECTION	COUNTY	TOTAL SHEETS	SHEET NO.
94/90	*	COOK	419	87
STA. 1626+00		TO STA.		
FED. ROAD DIST. NO.		ILLINOIS	FED. AID PROJECT	
62580		*1818, ETC, 2324.6-1P1R-9		



EXIT 55B
Pershing Rd
1/2 MILE

EXIT 55A
35th St
1/4 MILE

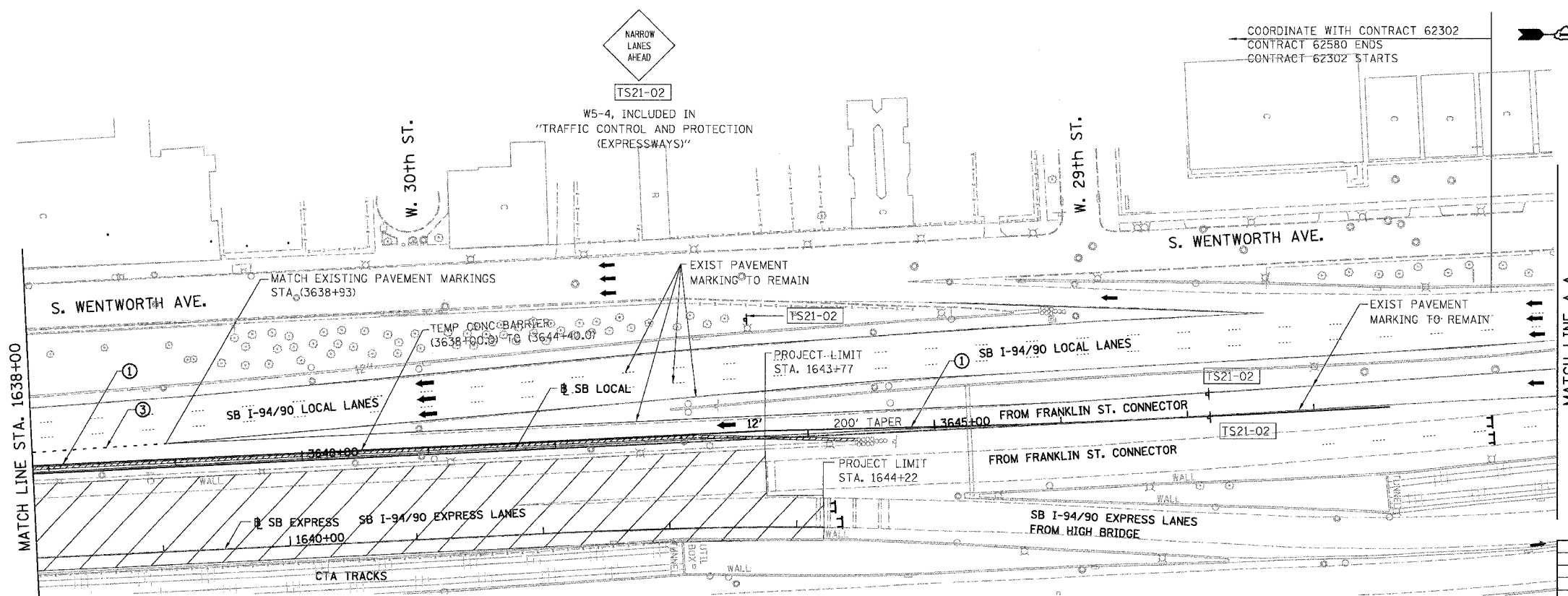
FOR INFORMATION ONLY



- LEGEND**
- WORK ZONE
 - TEMPORARY PAVEMENT
 - 1LL TRAFFIC LANE & DIRECTION OF TRAFFIC
 - DRUM OR BARRICADE TYPE II WITH STEADY BURN LIGHT
 - IMPACT ATTENUATORS, TEMPORARY (NON-REDIRECTIVE), TEST LEVEL 3
 - BARRICADE TYPE III
 - TEMPORARY CONCRETE BARRIER
 - ① LINE 4" (YELLOW EDGE LINE)
 - ② LINE 4" (WHITE EDGE LINE)
 - ③ LINE 4" (SKIP DASH, 6' SKIP - 2' DASH, WHITE)
 - ④ LINE 5" (SKIP DASH, 30' SKIP - 10' DASH, WHITE)
 - ⑤ LINE 8" (WHITE GORE LINE)
 - ⑥ LINE 8" (SKIP DASH, 12' SKIP - 3' DASH, WHITE)
 - ⑦ LINE 12" (DIAGONAL, 30' C-C)
 - ⑧ LINE 12" (DIAGONAL, 500' C-C)
 - ⑨ LETTERS AND SYMBOLS
 - ESx-xx EXISTING SIGNS
 - TSx-xx TEMPORARY SIGNS

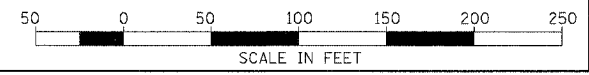
- STATIONING**
- +###.## STATION PROVIDED FROM THE SB I-90/94 EXPRESS LANES
 - (+###.##) STATION PROVIDED FROM THE SB I-90/94 LOCAL LANES
 - [+###.##] STATION PROVIDED FROM THE SLIP RAMP @

NOTE:
ALL PAVEMENT MARKINGS ON THIS SHEET WILL BE PAVEMENT MARKING TAPE, TYPE III, UNLESS OTHERWISE NOTED.



MATCH LINE A-A

BOWMAN, BARRETT & ASSOCIATES INC.
CONSULTING ENGINEERS
Chicago, Illinois
312.228.0100
www.bbainc.com



REVISIONS		ILLINOIS DEPARTMENT OF TRANSPORTATION F.A.I. 94/90 (DAN RYAN EXPRESSWAY) 31ST STREET TO 71ST STREET SB EXPRESS LANE RECONSTRUCTION MAINTENANCE OF TRAFFIC PLAN STAGE 1 SOUTHBOUND STA. 1626+00 TO STA.
NAME	DATE	
		SCALE: 1"=50'
		DATE: 7/22/2005
		DRAWN BY: RA
		CHECKED BY: RS

7/19/2005 2:16:27 PM