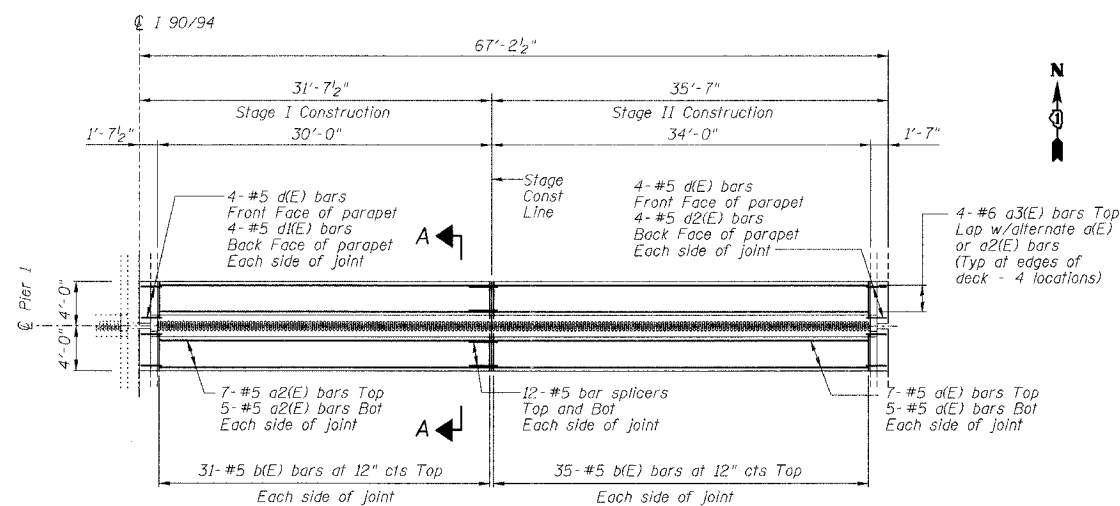


STATE OF ILLINOIS
DEPARTMENT OF TRANSPORTATION

ROUTE NO.	SECTION	COUNTY	TOTAL SHEETS	SHEET NO.
FAI 90/94		COOK	419	184
FED. ROAD DIST. NO.	LANDS	PROJECT		

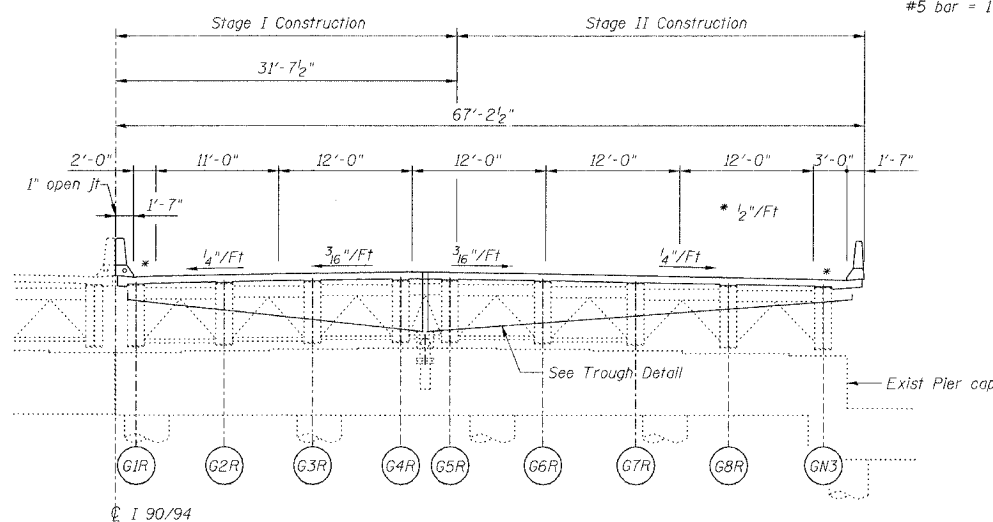
Sheet No 3
of 8 Sheets

2005-008F
CONTRACT #62580

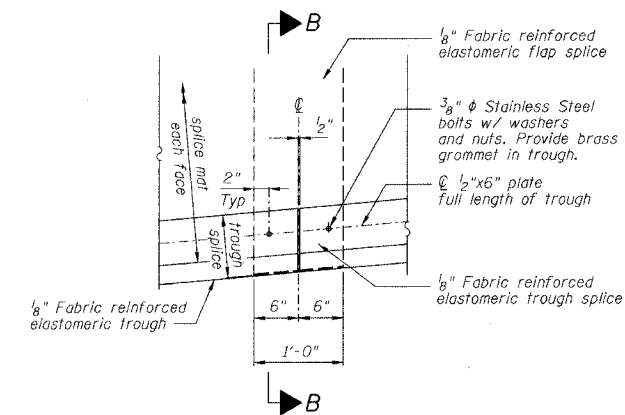


FINGER PLATE AT PIER 1 NORTHBOUND
JOINT RECONSTRUCTION PLAN AT PIER 1

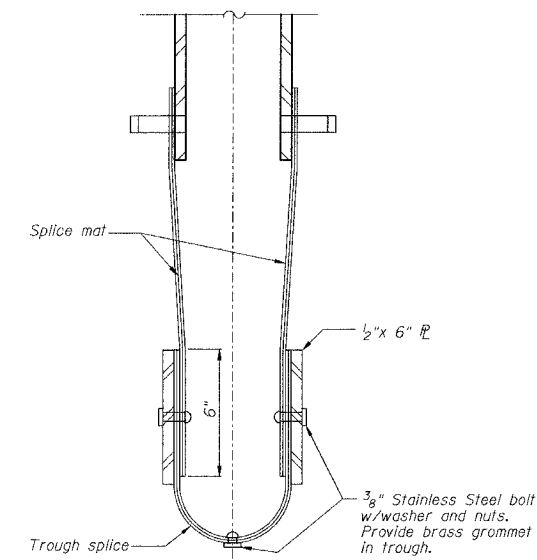
MIN BAR LAP
#5 bar = 1'-8"



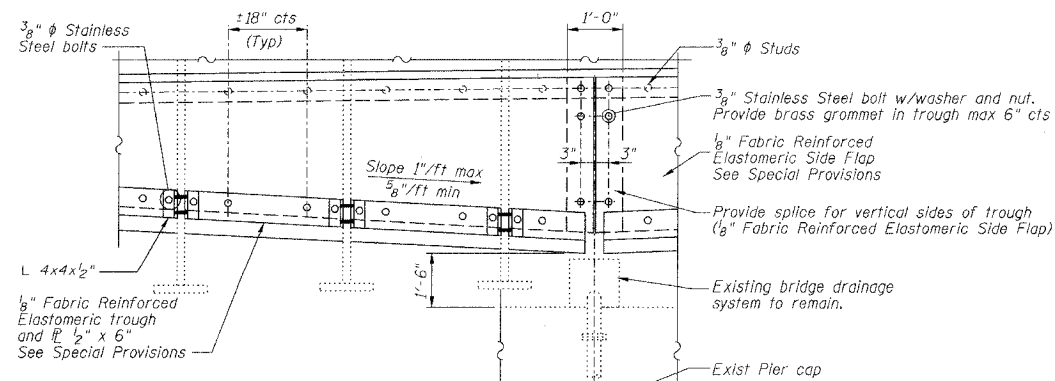
PIER 1 NORTHBOUND
ELEVATION AT PIER 1 (LOOKING NORTH)



TROUGH SPLICE DETAIL



SECTION B-B



TROUGH DETAIL

NOTES
For Section A-A see Sheet 4 of 8.

REVISIONS		STATE OF ILLINOIS DEPARTMENT OF TRANSPORTATION DIVISION OF HIGHWAYS		DRAWN BY DATE RLK 5/03
1				CHECKED BY DATE SDS 5/03
2				BOOK NUMBER
3				PROJECT NO.
4				4222-3
5				SHEET NO.
6				
7				
8				
9				
10				

PIER NO. 1

FINGER PLATE EXPANSION JOINT DETAILS

FAI RTE 90/94 DAN RYAN EXPRESSWAY
SW 016-1110 (NORTHBOUND)
SEC 2005-008F COOK COUNTY

HOMER L. CHASTAIN & ASSOCIATES
CONSULTING ENGINEERS
8609 W. BRYAN MAWRE AVENUE
SUITE 204
CHICAGO, ILLINOIS 60631
312-714-0000
FAX 312-714-0005