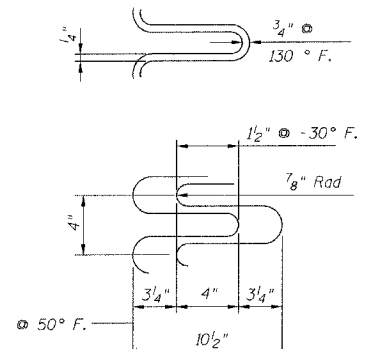
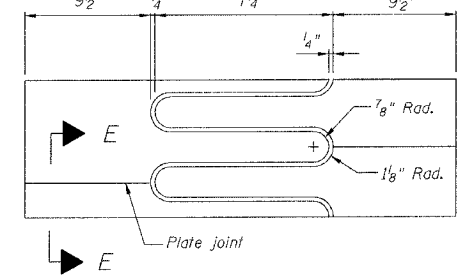
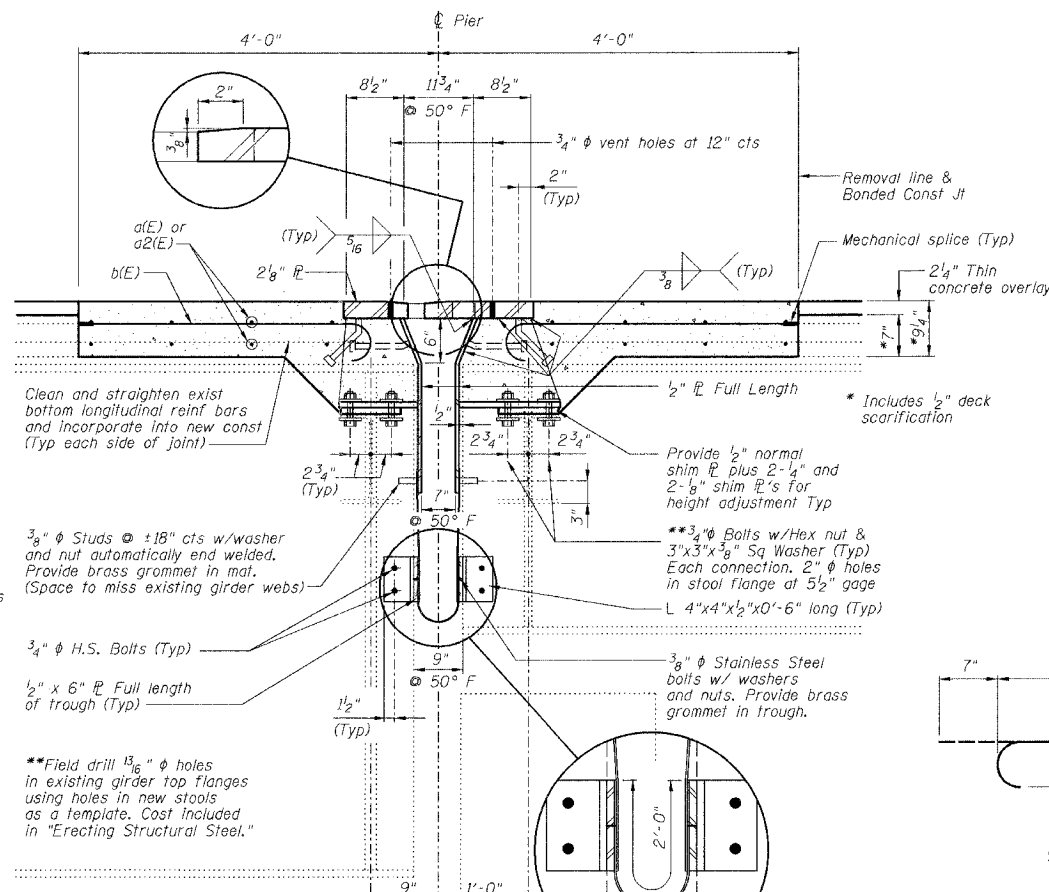
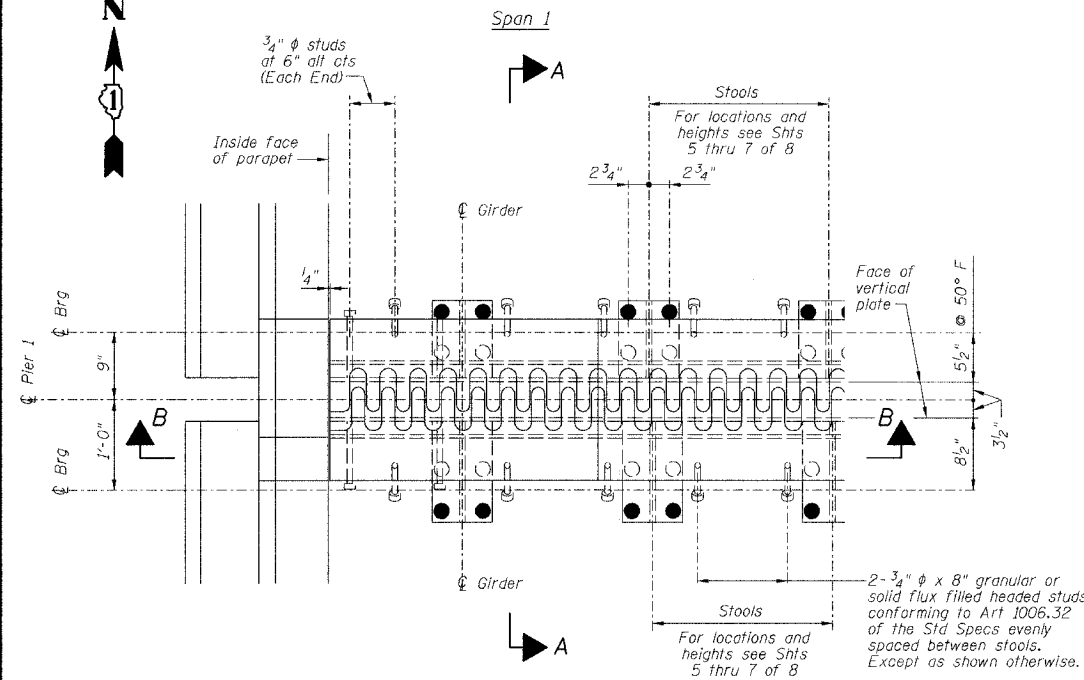


STATE OF ILLINOIS
DEPARTMENT OF TRANSPORTATION

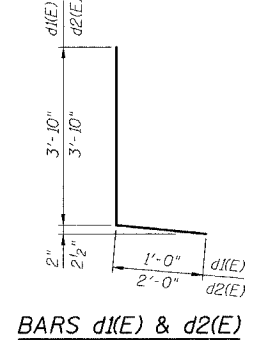
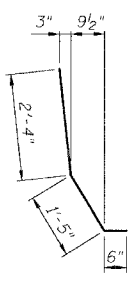
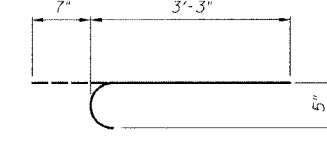
| ROUTE NO. | SECTION | COUNTY | TOTAL SHEETS | SHEET NO. |
|-------------------|---------|----------|--------------|-----------|
| FAI 90/94 | | COOK | 419 | 182 |
| FEDERAL DIST. NO. | | ILLINOIS | PROJECT | |

Sheet No 4
of 8 Sheets

2005-008F
CONTRACT #62580



SECTION E-E



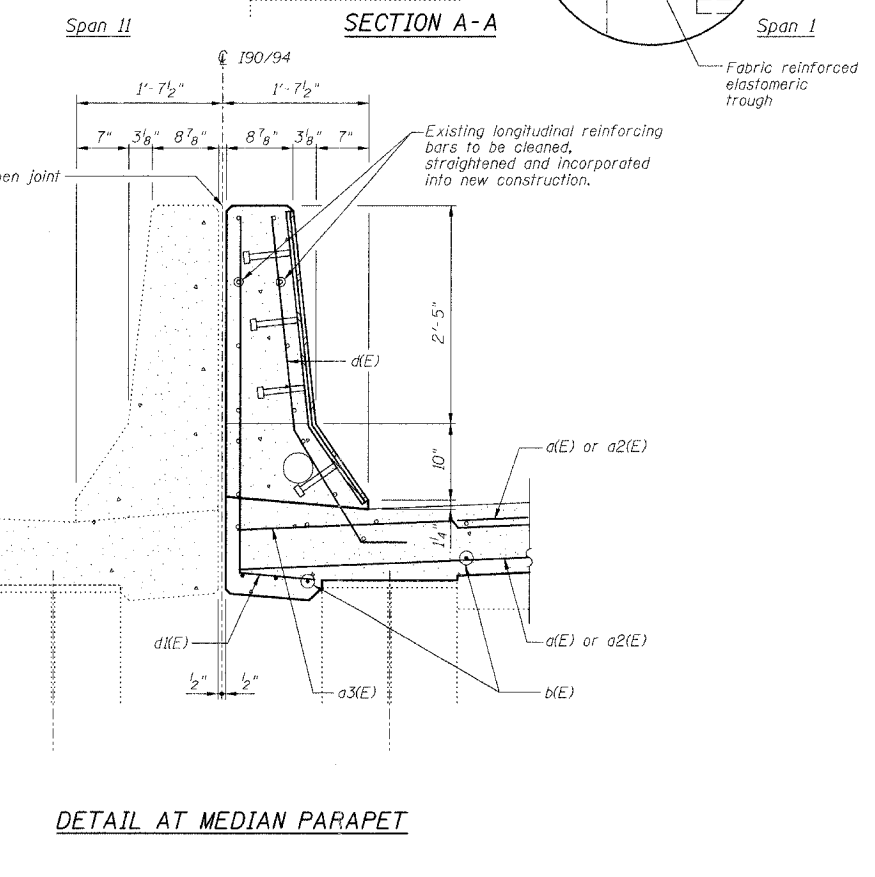
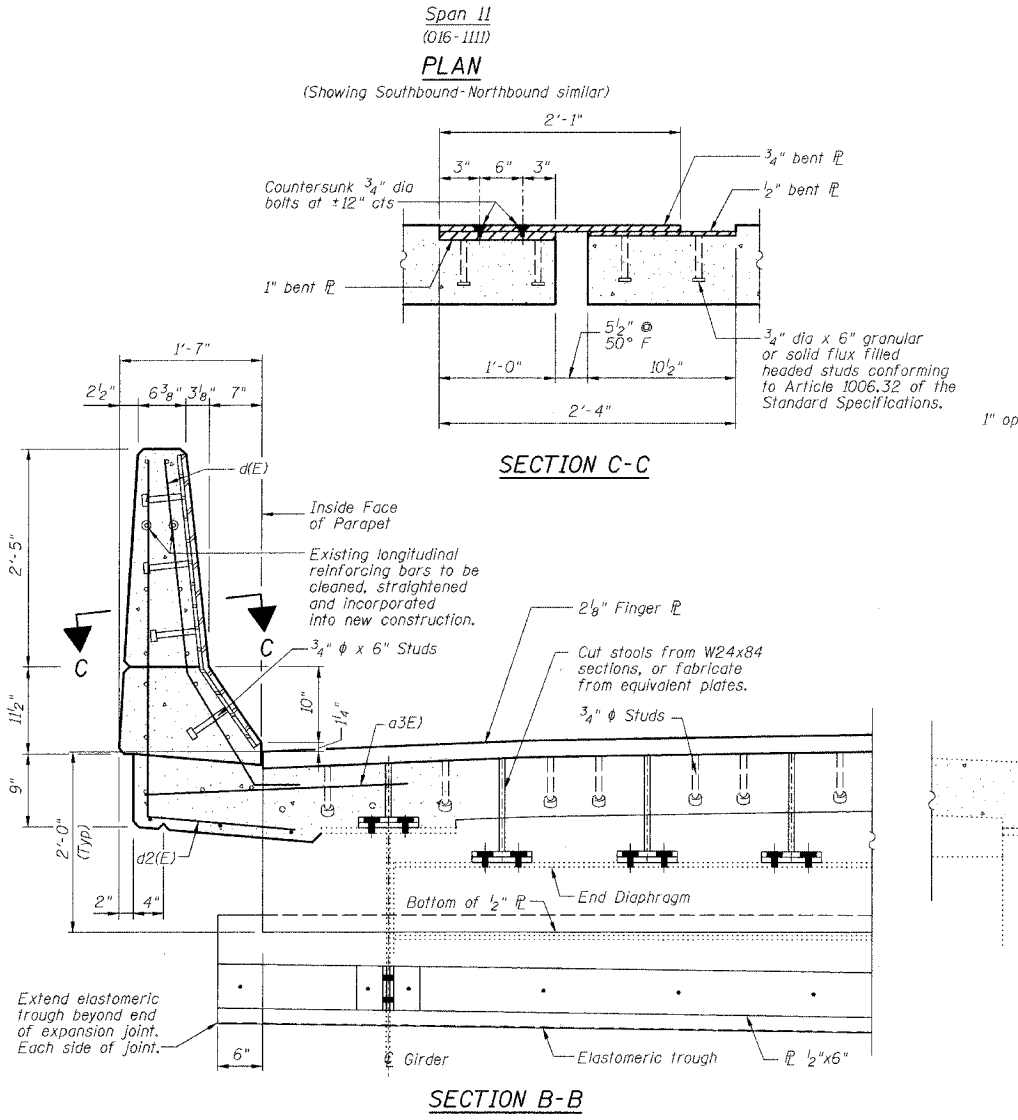
BILL OF MATERIAL

| Bar | No. | Size | Length | Shape |
|----------------------------------|-----|------|--------|-------|
| d(E) | 24 | #5 | 35'-0" | — |
| a2(E) | 24 | #5 | 31'-0" | — |
| a3(E) | 16 | #6 | 4'-6" | — |
| b(E) | 132 | #5 | 3'-10" | — |
| d(E) | 16 | #5 | 4'-3" | — |
| d1(E) | 8 | #5 | 4'-10" | — |
| d2(E) | 8 | #5 | 5'-10" | — |
| Reinforcement Bars, Epoxy Coated | | | Pound | 2450 |
| Concrete Removal | | | Cu Yd | 17.3 |
| Concrete Superstructure | | | Cu Yd | 20.1 |
| Bar Splicers | | | Each | 24 |
| Mechanical Splice | | | Each | 132 |

Reinforcing bars designated (E) shall be epoxy coated.

NOTES

- The Contractor shall bolt the Stools of the Fingerplate Joint Assembly to the top of existing End Cross Frames and to the top of the existing girders, as shown in Section A-A of this drawing.
- Stainless steel bolts, washers and nuts shall meet the requirements of ASTM A193.
- The installation of all necessary hardware, stainless steel bolts, studs and washers, plates and angles shall be included with "Erecting Structural Steel".
- Expansion Length = 403.6'



PIER NO. 1

FINGER PLATE EXPANSION JOINT DETAILS

| REVISIONS | | | STATE OF ILLINOIS DEPARTMENT OF TRANSPORTATION DIVISION OF HIGHWAYS | | DRAWN BY DATE RLK 5/03 | |
|-----------|------|----------|---|---------------------|-----------------------------|-------------|
| No. | DATE | INITIALS | FAI RTE 90/94 | DAN RYAN EXPRESSWAY | CHECKED BY DATE SDS 5/03 | BOOK NUMBER |
| 1 | | | SN 016-1110 (NORTHBOUND) | | | |
| 2 | | | SEC 2005-008F | COOK COUNTY | PROJECT No. | 4222-3 |
| 3 | | | | | SHEET No. | |
| 4 | | | | | | |
| 5 | | | | | | |
| 6 | | | | | | |
| 7 | | | | | | |
| 8 | | | | | | |
| 9 | | | | | | |
| 10 | | | | | | |

CHAMBERLAIN & ASSOCIATES
CONSULTING ENGINEERS
8600 W. BRYAN MAUER AVENUE
SUITE 204
CHICAGO, ILLINOIS 60631
312-734-0900
FAX: 312-734-0906