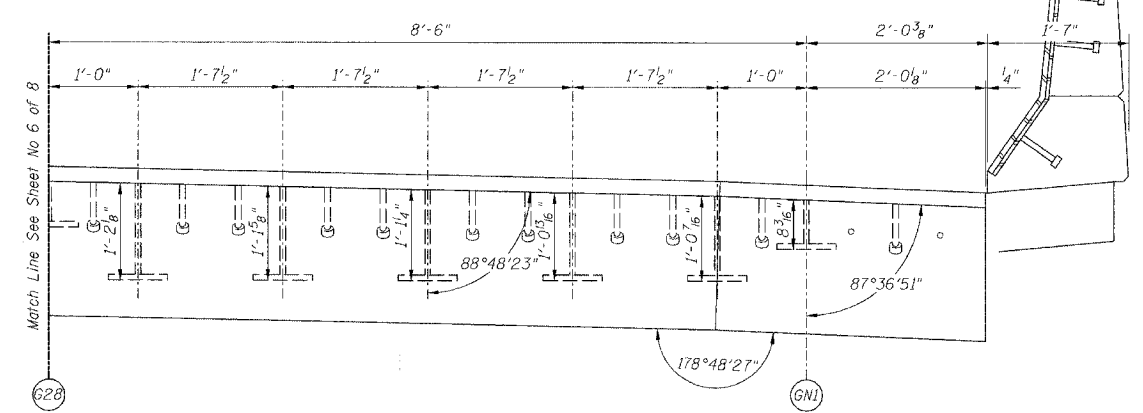


STATE OF ILLINOIS
DEPARTMENT OF TRANSPORTATION

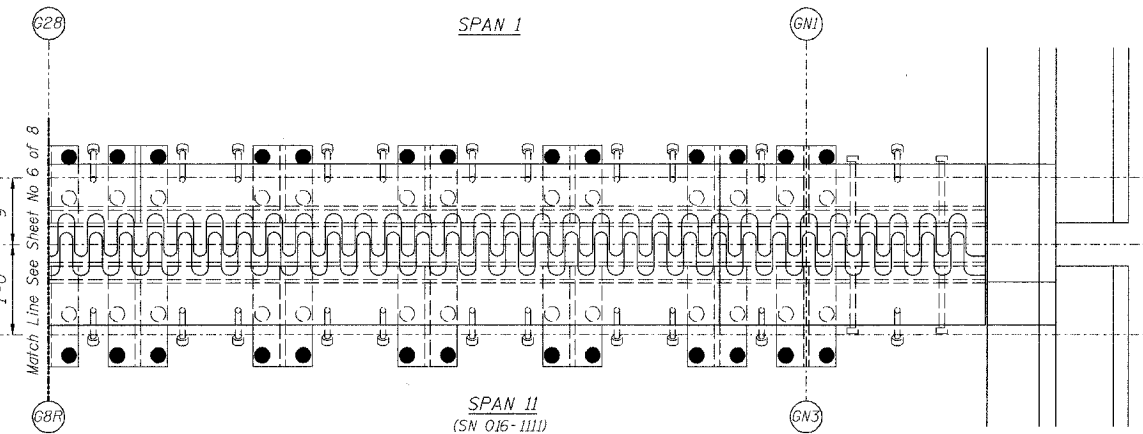
ROUTE NO.	SECTION	COUNTY	TOTAL SHEETS	SHEET NO.
FAI 90/94	*	COOK	419	185
FED. ROAD DIST. NO.	ILLINOIS	PROJECT		

Sheet No 7
of 8 Sheets

* 2005-008F
CONTRACT #62580

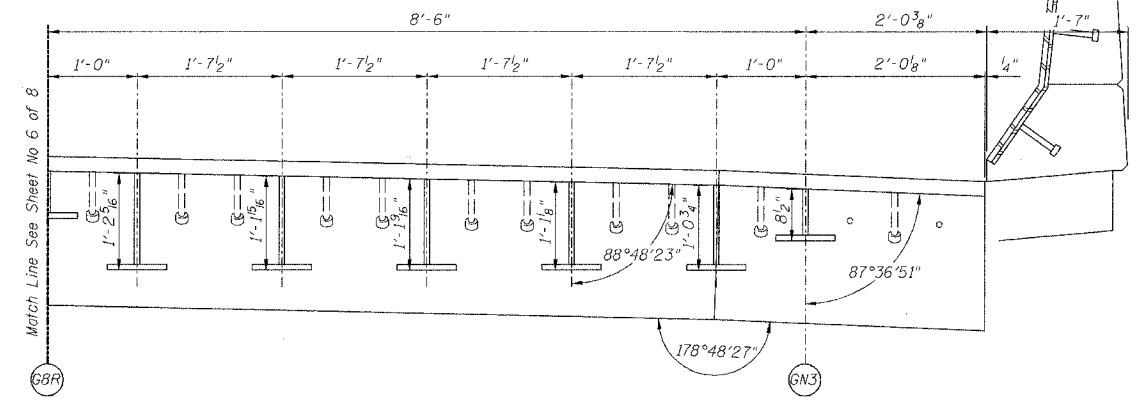


SECTION A-A



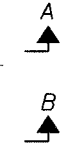
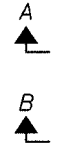
SPAN I
(SN 016-1111)

PLAN OF FINGER PLATE AT PIER 1 (NORTHBOUND)



SECTION B-B

For location of splice with respect to fingers see Flame Cutting Diagram.



PIER NO. 1

FINGER PLATE PLAN AND ELEVATION DETAILS

REVISIONS NO. DATE INITIALS		STATE OF ILLINOIS DEPARTMENT OF TRANSPORTATION DIVISION OF HIGHWAYS		DRAWN BY DATE RLK 5/03
		FAI RTE 90/94 DAN RYAN EXPRESSWAY SN 016-1110 (NORTHBOUND)		CHECKED BY DATE SDS 5/03
		SEC 2005-008F COOK COUNTY		BOOK NUMBER
		HOMER L. CHASTAIN & ASSOCIATES 8600 W. BERTH MARSH AVENUE SUITE 304 CHICAGO, ILLINOIS 60631 312-734-0000 FAX 312-734-0000		PROJECT No. 4222-3
				SHEET No.

Note:
For optional splice detail see
flame cutting diagram on Sheet No. 4