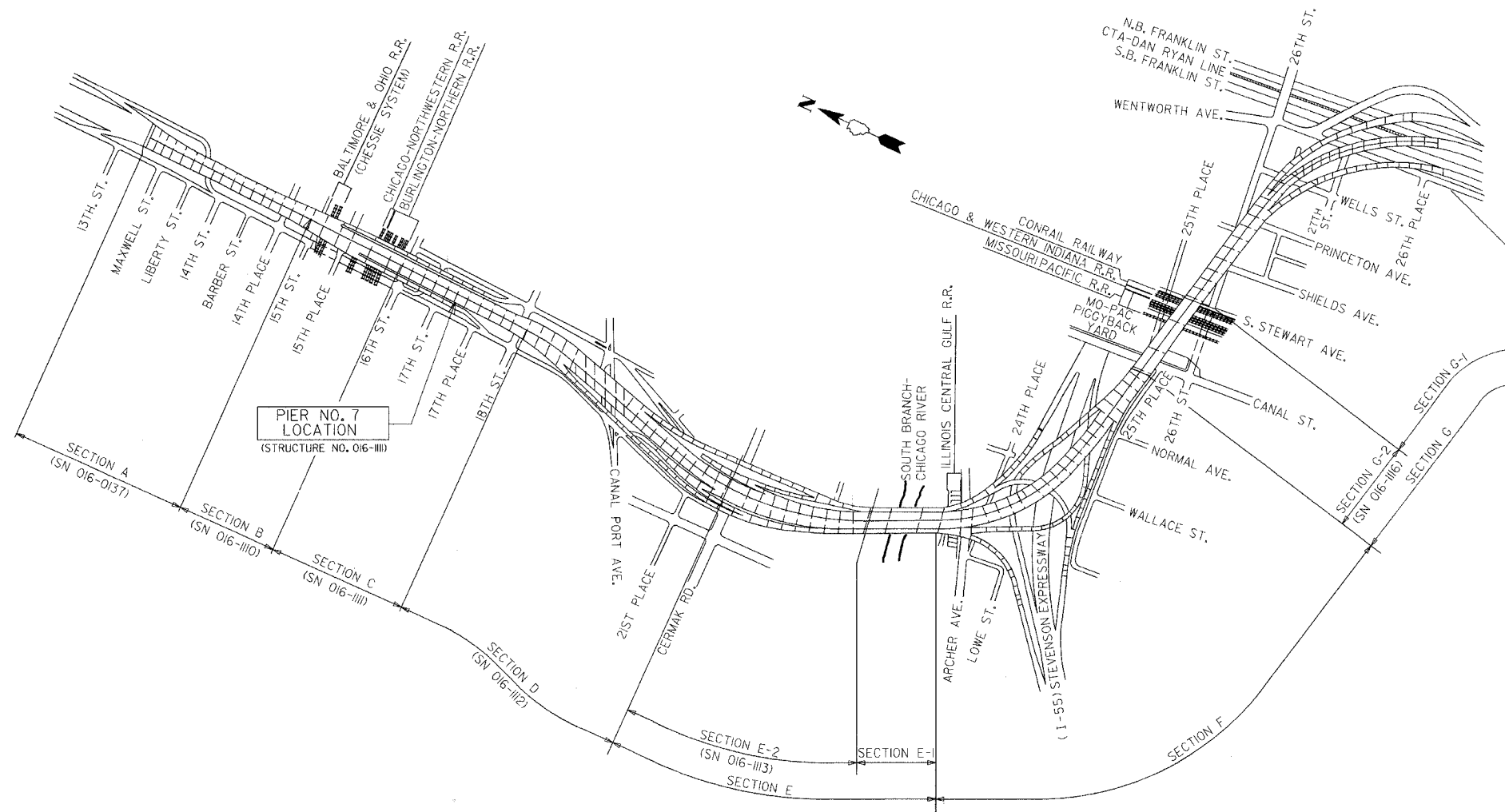


STATE OF ILLINOIS
DEPARTMENT OF TRANSPORTATION

ROUTE NO.	SECTION	COUNTY	TOTAL SHEETS	SHEET NO.
FAI 90/94		COOK	419	195
FED. ROAD DIST. NO.	ILLINOIS	PROJECT		
2005-008F				

Sheet No 1
of 8 Sheets



KEY PLAN
DAN RYAN EXPRESSWAY (I-90/I-94) VIADUCT
COOK COUNTY, ILLINOIS

DESIGN STRESSES

$f'_c = 3500$ psi
 $f_y = 60,000$ psi (Reinf)
 $f_y = 50,000$ psi (M270 Grade 50)

BILL OF MATERIAL

ITEM	UNIT	TOTAL
Concrete Removal	Cu Yd	17.3
Concrete Superstructure	Cu Yd	20.1
Erecting Structural Steel	L.S.	0.10
Reinforcement Bars, Epoxy Coated	Pound	2460
Mechanical Splice	Each	132
Bar Splicer	Each	24
Erecting Fabric Reinforced Elastomeric Trough	Foot	65

GENERAL NOTES

Plan dimensions and details relative to existing structure have been taken from existing plans and are subject to nominal construction variations. It shall be the Contractor's responsibility to verify such dimensions and details in the field and make necessary approved adjustments prior to construction or ordering of materials. Such variations shall not be cause for additional compensation for a change in the scope of the work, however, the Contractor will be paid for the quantity actually furnished at the unit price for the work.

The slab is to be removed in stages. Before starting the concrete removal, the Contractor is required to submit to the Engineer for approval his staging plans and method of removal.

Prior to pouring the new concrete deck, all loose rust, loose mill scale, and other loose potentially detrimental foreign material shall be removed from the surfaces of the beams or girders in contact with concrete. The cost of this work will be included in the pay item covering removal of the existing concrete. All heavy rust and other tightly adhered potentially detrimental foreign matter shall also be removed from the surfaces of the beams or girders in contact with concrete. Tightly adhered paint may remain unless otherwise noted. This removal shall be accomplished by methods that will not damage the steel. The cost of this work will be paid for according to Article 109.04 of the Standard Specifications.

Field welding of construction accessories will not be permitted to beams or girders.

Tapered shims shall be added under the stools as required by the Engineer to make a smooth finger joint.

The finger plates shall be flame cut as provided in Article 505.04(k) of the Standard Specifications

Finger plate expansion joints shall be assembled in the proper position with the ends in place and shall be left assembled for shop inspection.

Joint openings shall be adjusted according to Article 503.10(c) of the Standard Specifications when the deck is poured at an ambient temperature other than 50°F

Fasteners shall be high strength bolts. Bolts $\frac{3}{4}$ " ϕ , open holes $\frac{3}{16}$ " ϕ unless otherwise noted.

Reinforcement bars shall conform to the requirements of AASHTO M-31 or M-322 Grade 60.

Existing structural steel that will be in contact with new structural steel shall be cleaned and painted prior to erection as required by the Special Provision "Cleaning and Painting Contact Surface Areas of Existing Steel Structures".

The existing structural steel coating contains lead. The Contractor should take appropriate precautions to deal with the presence of lead on this project.

All construction joints shall be bonded.

Traffic to be maintained during construction, see Roadway Plans for Stage Construction Details.

Existing design and fabrication plans are available upon request.

All structural steel shall be AASHTO M270 Grade 50 unless noted otherwise. Calculated weight = 25,910 lbs.

PIER NO. 7

KEY PLAN

REVISIONS	STATE OF ILLINOIS DEPARTMENT OF TRANSPORTATION DIVISION OF HIGHWAYS	DRAWN BY DATE RLK 5/03
NO. DATE INITIALS	FAI RTE 90/94 DAN RYAN EXPRESSWAY SN 016-1111 (NORTHBOUND) SEC 2005-008F COOK COUNTY	CHECKED BY DATE SDS 5/03
1		BOOK NUMBER
2		PROJECT NO. 4222-3
3		SHEET NO.
4		
5		
6		
7		
8		
9		
10		



CHASTAIN & ASSOCIATES
CONSULTING ENGINEERS
8809 W. BRYAN MAJOR AVENUE
SUITE 204
CHICAGO, ILLINOIS 60618
312-714-0050
FAX 312-714-0050