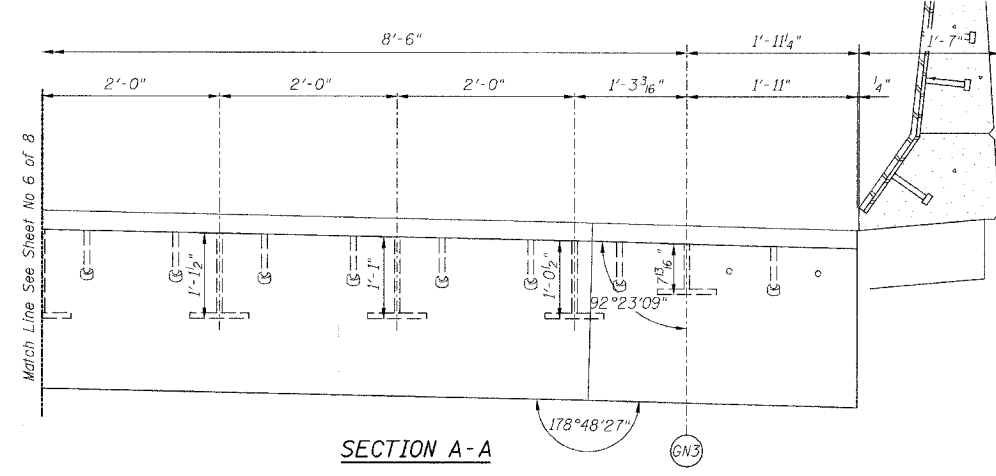


STATE OF ILLINOIS
DEPARTMENT OF TRANSPORTATION

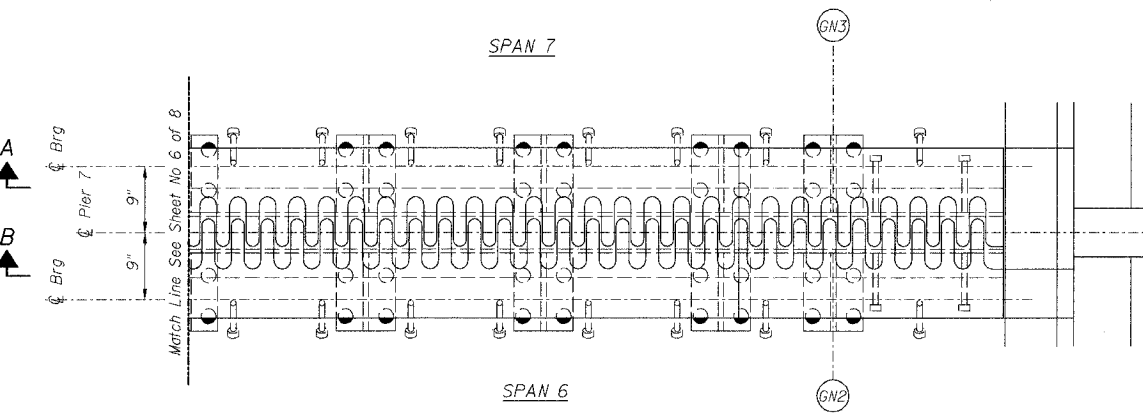
ROUTE NO.	SECTION	COUNTY	TOTAL SHEETS	SHEET NO.
FAI 90/94	*	COOK	419	201
FEDERAL DIST. NO.	ILLINOIS	PROJECT		

Sheet No 7
of 8 Sheets

* 2005-008F
CONTRACT #62580

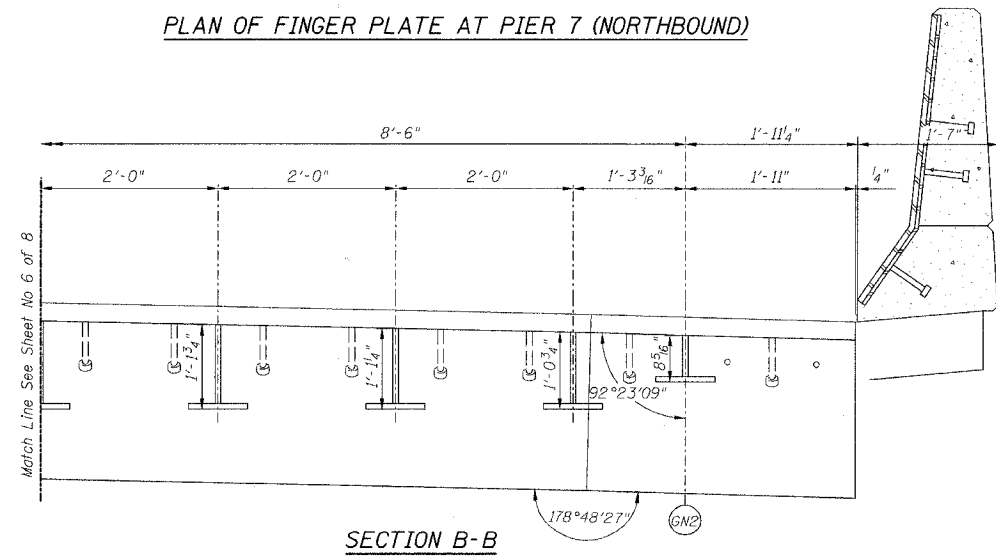


SECTION A-A



PLAN OF FINGER PLATE AT PIER 7 (NORTHBOUND)

For location of splice with respect to fingers see Flame Cutting Diagram.



SECTION B-B

Note:
For optional splice detail see
Flame cutting diagram on Sheet No. 4

PIER NO. 7

REVISIONS			STATE OF ILLINOIS DEPARTMENT OF TRANSPORTATION DIVISION OF HIGHWAYS		DRAWN BY RLK 5/03
No.	DATE	INITIALS	FAI RTE 90/94 DAN RYAN EXPRESSWAY		CHECKED BY SDS 5/03
1			SN 016-1111 (NORTHBOUND)		BOOK NUMBER
2			SEC 2005-008F COOK COUNTY		4222-3
3			PROJECT NO.		
4			SHEET NO.		
5			HOMER L. CHASTAIN & ASSOCIATES CONSULTING ENGINEERS		
6			9600 W. BIRN MAWR AVENUE SUITE 204 CHICAGO, ILLINOIS 60681 312-714-9050 FAX 312-714-9056		