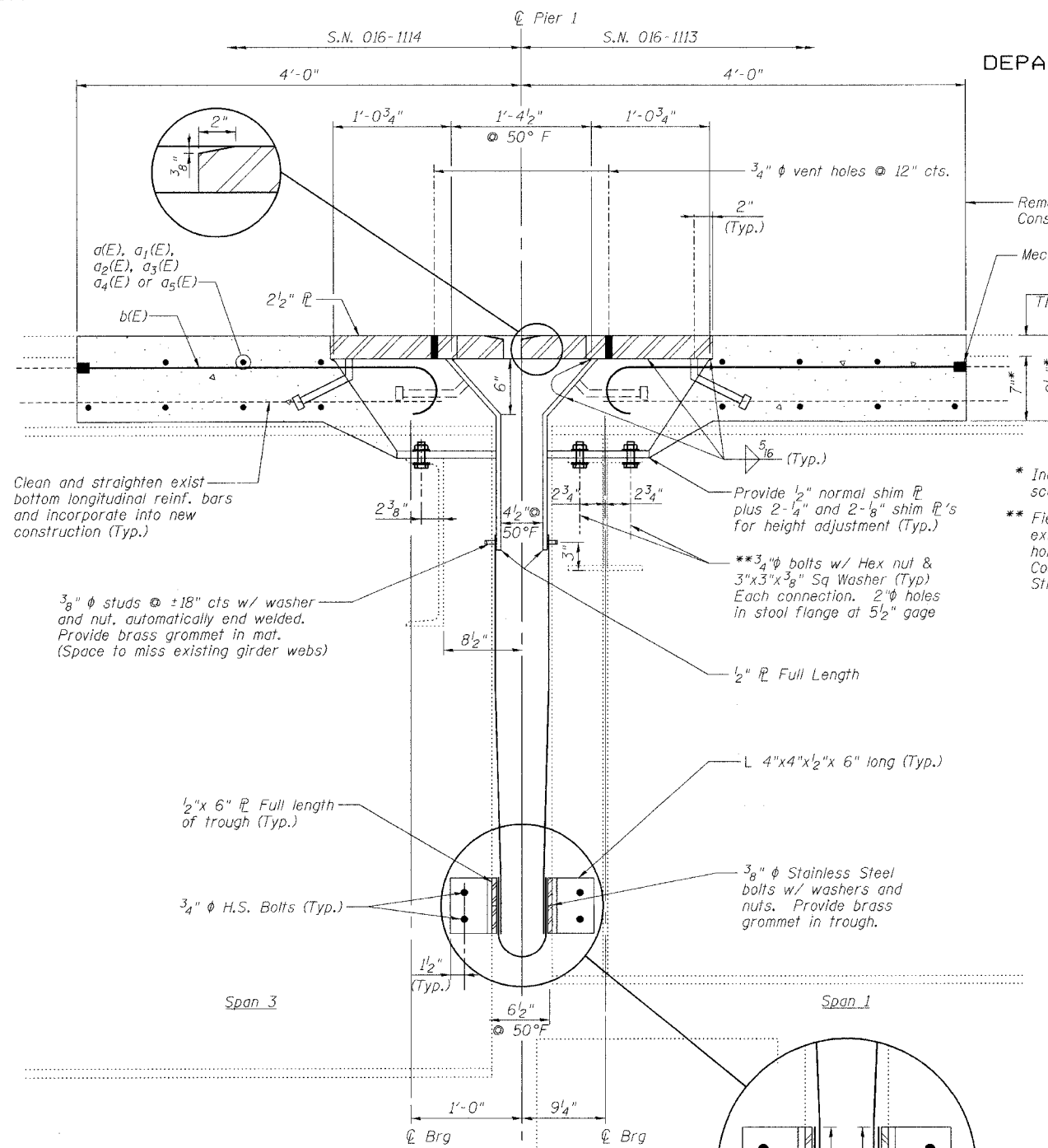


STATE OF ILLINOIS
DEPARTMENT OF TRANSPORTATION

ROUTE NO.	SECTION	COUNTY	SHEETS	SHEET	SHEET NO.
FAI 90/94	*	COOK	419	205	9 SHEETS
FED. ROAD DIST. NO.	ILLINOIS	FED. AID PROJECT			
* 2005-008F Contract #62580					



Removal Line & Const. Joint

Mechanical splice (Typ.)

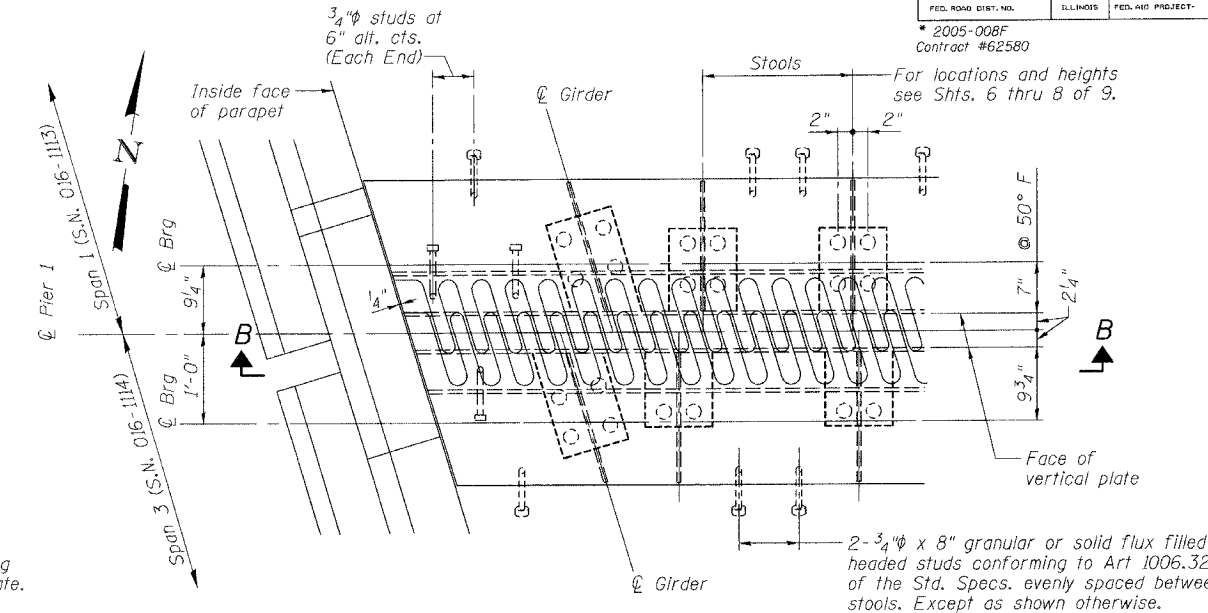
Thin concrete overlay

* Includes 1/2" deck scarification

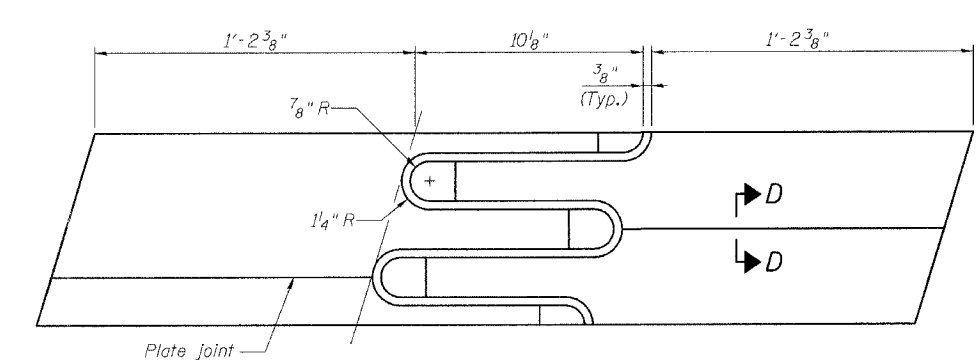
** Field drill 13/16" φ holes in existing girder top flanges using holes in new stools as a template. Cost included in "Erecting Structural Steel."

Clean and straighten exist bottom longitudinal reinf. bars and incorporate into new construction (Typ.)

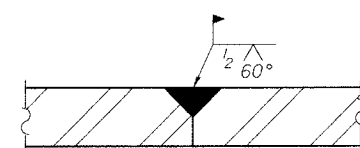
3/8" φ studs @ ±18" cts w/ washer and nut, automatically end welded. Provide brass grommet in mat. (Space to miss existing girder webs)



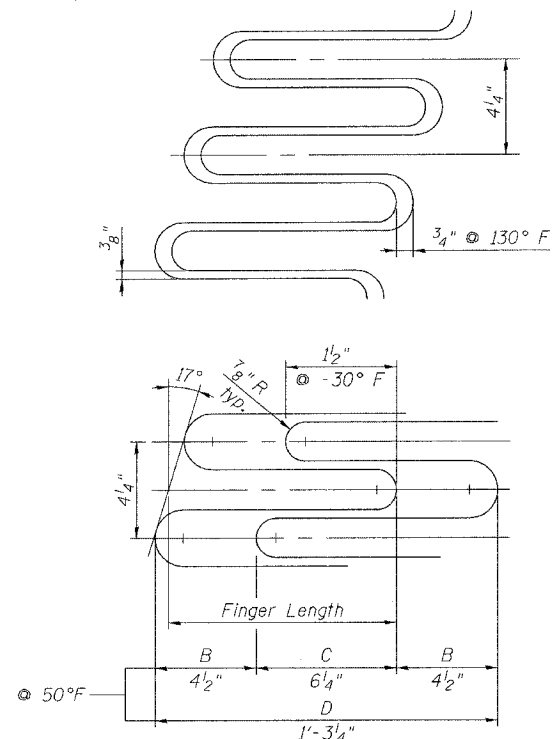
PLAN



FLAME CUTTING DIAGRAM
(Proposed Finger PL - Cut from 2 1/2" x 3'-1 13/16" PL)



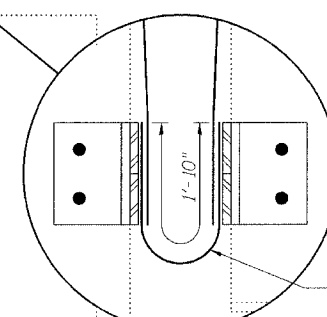
SECTION D-D



FINGER DETAIL

Finger Length = 10 1/8"
Weld Length = 12 1/4"
Weld Size = 5/16"
Expansion length = 477.4"

SECTION A-A



NOTES

- The Contractor shall bolt the Stools of the Fingerplate Joint Assembly to the top of existing girders, as shown in Section A-A of this drawing.
- Stainless steel bolts, washers and nuts shall meet the requirements of ASTM A193.
- The installation of all necessary hardware, stainless steel bolts, studs and washers, plates and angles shall be included with "Erecting Structural Steel".
- For Section B-B, see Sheet 5 of 9.

REVISIONS	
NAME	DATE

ILLINOIS DEPARTMENT OF TRANSPORTATION
PIER 1 JOINT DETAILS
F.A.I. ROUTE 90/94 NORTHBOUND (DAN RYAN EXPRESSWAY)
OVER SOUTH BRANCH - CHICAGO RIVER
COOK COUNTY
S.N. 016-1113 - PIER 1

SCALE: VERT. _____
HORIZ. _____
DATE: 3/22/05

DRAWN BY: LANDREY
DESIGNED BY: SANFORD
CHECKED BY: _____

GREENE & BRADFORD, INC.
OF SPRINGFIELD

COMPUTER FILE NO.
04286-W01-NB-FPJ

PROJECT 04286-W01
8/3/05-MML

FILE NAME = \$FILE\$
PLOT DATE = 8/17/2005
PLOT TIME = 9:45:53 AM
OPERATOR = michellel