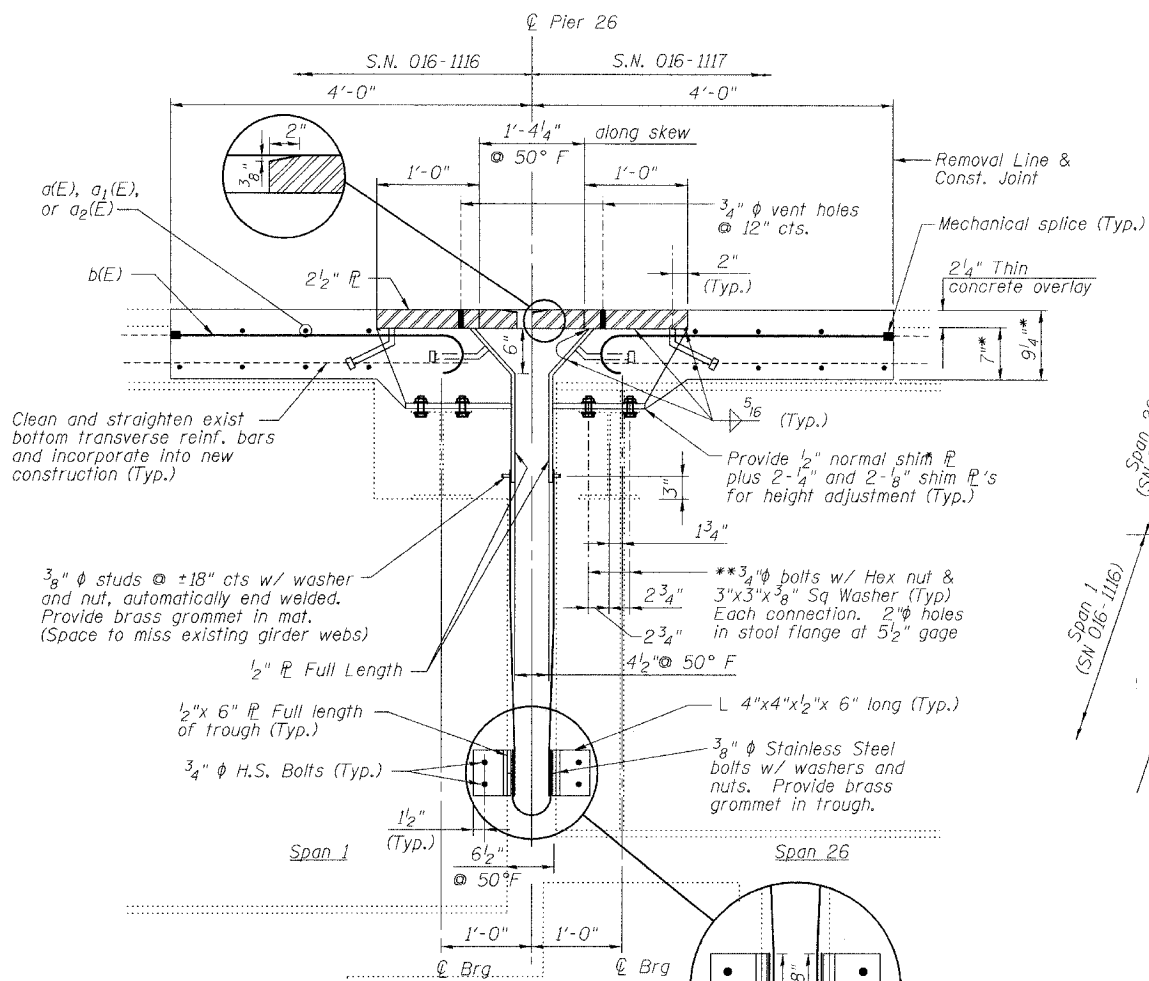


STATE OF ILLINOIS  
DEPARTMENT OF TRANSPORTATION

ROUTE NO.	SECTION	COUNTY	ISIRI SHEETS	SHEET NO.
FA1 90/94	*	COOK	419	215
FED. RDG. DIST. NO.	ILLINOIS	FED. AID PROJECT		

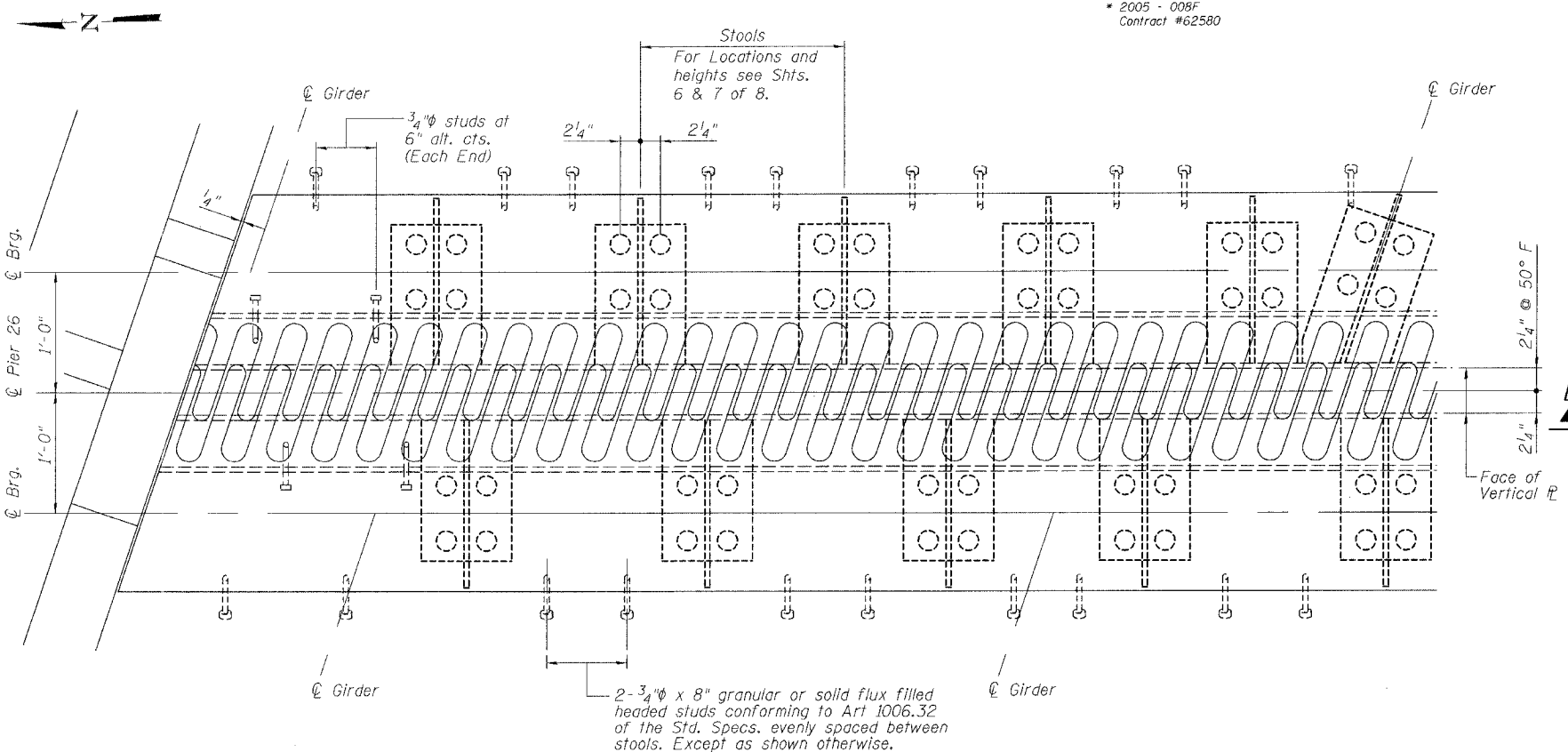
\* 2005 - 008F  
Contract #62580

SHEET NO. 4  
8 SHEETS



\* Includes 1/2" deck scarification  
\*\* Field drill 1 3/16" holes in existing girder top flanges using holes in new stools as a template. (Span 26 - S.N. 016-1117 Only) Cost included in "Erecting Structural Steel."

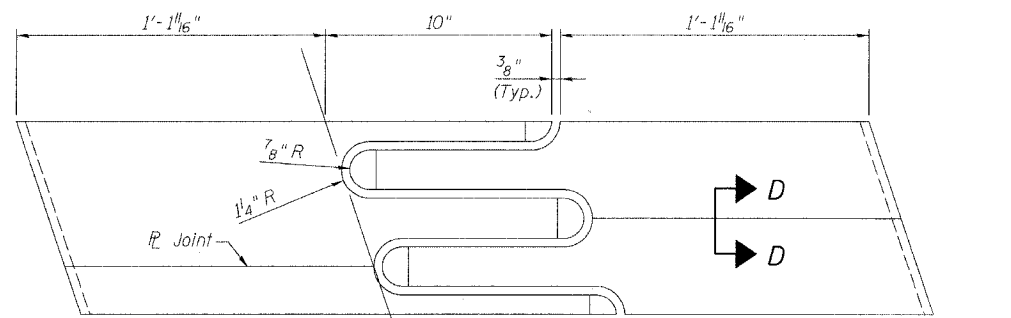
SECTION A-A



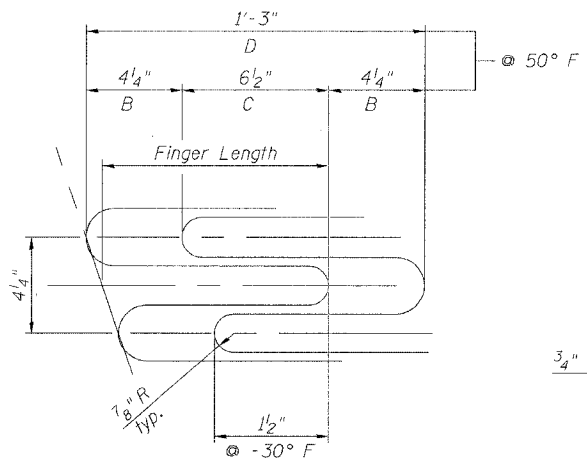
PLAN

NOTES

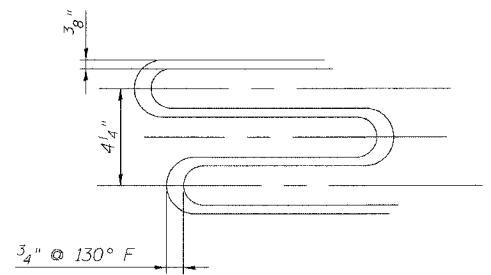
1. The Contractor shall bolt the Stools of the Fingerplate Joint Assembly to the top of existing girders on the Span 26 side only, as shown.
2. Stainless steel bolts, washers and nuts shall meet the requirements of ASTM A193.
3. The installation of all necessary hardware, stainless steel bolts, studs and washers, plates and angles shall be included with "Erecting Structural Steel."
4. For Section B-B, see Sheet 5 of 8.



FLAME CUTTING DIAGRAM  
(Proposed Finger Plate - Cut from 2 1/2" x 2'-11 3/4" PL)



FINGER DETAIL  
Finger Length = 10"  
Weld Length = 12"  
Weld Size = 5/16"  
Expansion Length = 567.1"



SECTION D-D

REVISIONS	
NAME	DATE

ILLINOIS DEPARTMENT OF TRANSPORTATION  
**PIER 26 JOINT DETAILS**  
F.A.I. ROUTE 90/94 NORTHBOUND (DAN RYAN EXPRESSWAY)  
OVER 28th ST. TO S. STEWART ST.  
COOK COUNTY  
S.N. 016-1117 - PIER 26

SCALE: VERT. \_\_\_\_\_  
HORIZ. \_\_\_\_\_  
DATE: 2/17/05

DRAWN BY: HEBERLING  
DESIGNED BY: SANFORD  
CHECKED BY: \_\_\_\_\_

COMPUTER FILE NO.  
04286-W03-FPJ  
PROJECT 04286-W03  
8/3/05-MML

GREENE & BRADFORD, INC.  
OF SPRINGFIELD  
CONSULTING ENGINEERS  
PROFESSIONAL DESIGN FIRM NO. 04-00076  
REGISTERED IN ILLINOIS PROFESSIONAL CORPORATION  
OFF. 100-4844, 1200 W. 102nd St., E. Moline, IL 61201-3800

FILE NAME = \$FILES916\$ DRW = \$PLOTTER\$  
PLOT DATE = 8/21/2005  
PLOT TIME = 9:46:20 AM  
OPERATOR = michellel