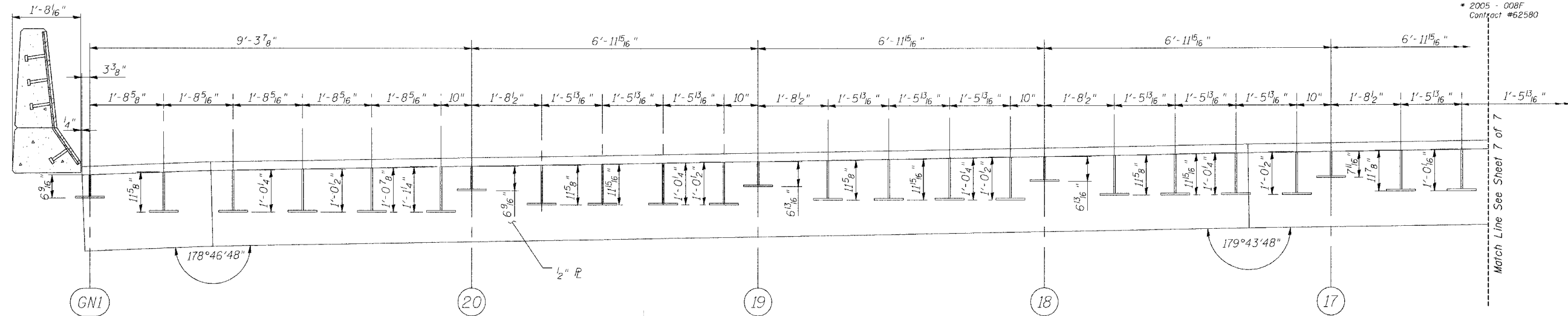


STATE OF ILLINOIS
DEPARTMENT OF TRANSPORTATION

ROUTE NO.	SECTION	COUNTY	SHEET NO.	SHEET NO.
FAI 90/94	*	COOK	419	217
FED. ROAD DIST. NO.	ILLINOIS	FED. AID PROJECT		

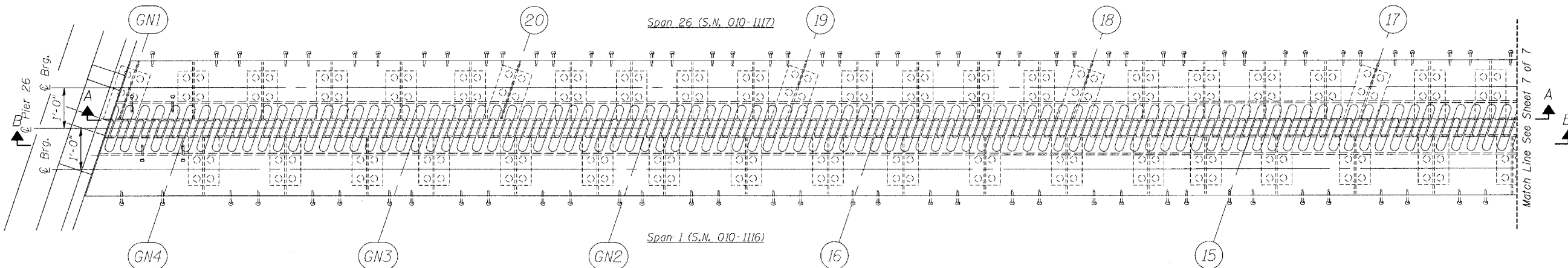
SHEET NO. 6
8 SHEETS

* 2005 - 008F
Contract #62580

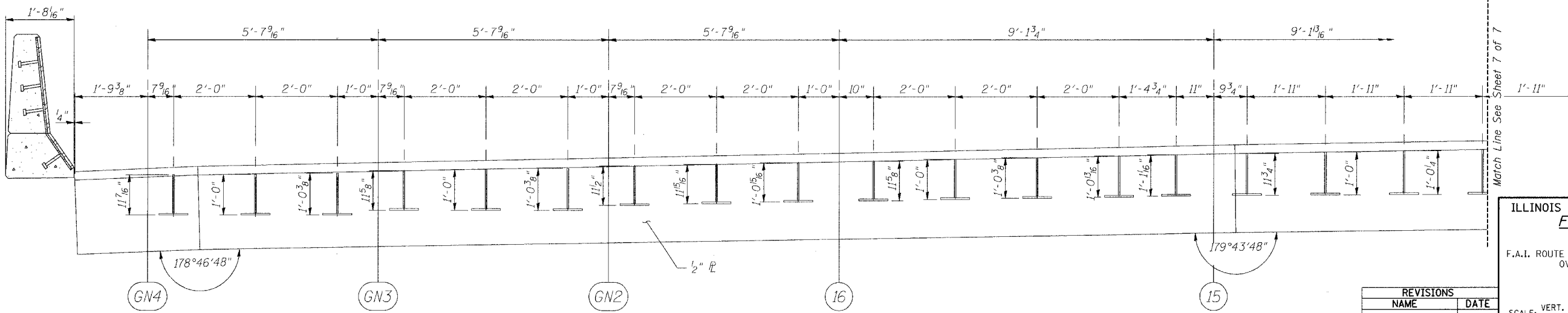


SECTION A-A

(Spacing along Face of 1/2" Vert. R)



PLAN OF FINGER R AT PIER 26 (NORTHBOUND)



SECTION B-B

(Spacing along Face of 1/2" Vert. R)

REVISIONS	
NAME	DATE

ILLINOIS DEPARTMENT OF TRANSPORTATION
**FINGER PLATE PLAN
AND ELEVATION**
F.A.I. ROUTE 90/94 NORTHBOUND (DAN RYAN EXPRESSWAY)
OVER 28th ST. TO S. STEWART ST.
COOK COUNTY
S.N. 016-1117 - PIER 26

SCALE: VERT. _____
HORIZ. _____
DATE: 2/17/05
DRAWN BY: HEBERLING
DESIGNED BY: SANFORD
CHECKED BY: _____

GREENE & BRADFORD, INC.
CONSULTING ENGINEERS
AND ARCHITECTS
PROFESSIONAL ENGINEERING CORPORATION
205 N. LAKE ST., SUITE 200, CHICAGO, ILL. 60601
TEL: 312.464.1200 FAX: 312.464.1201

COMPUTER FILE NO.
04286-W03-PE1
PROJECT 04286-W03
8/3/05-MML

FILE NAME = \$FILE\$
E = \$E\$
PLOT DATE = 8/17/2005
PLOT TIME = 9:46:41 AM
OPERATOR = mitchell