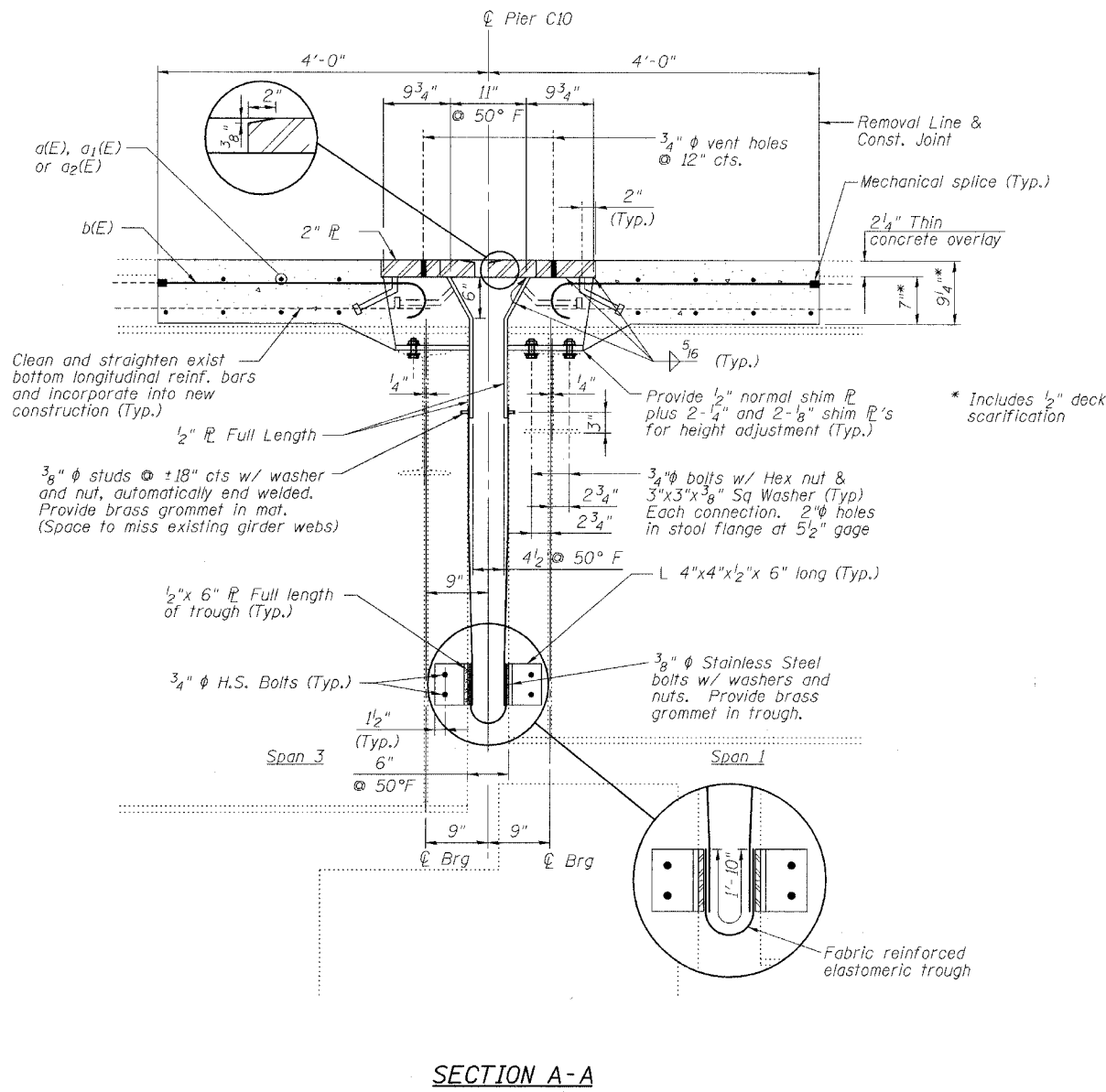


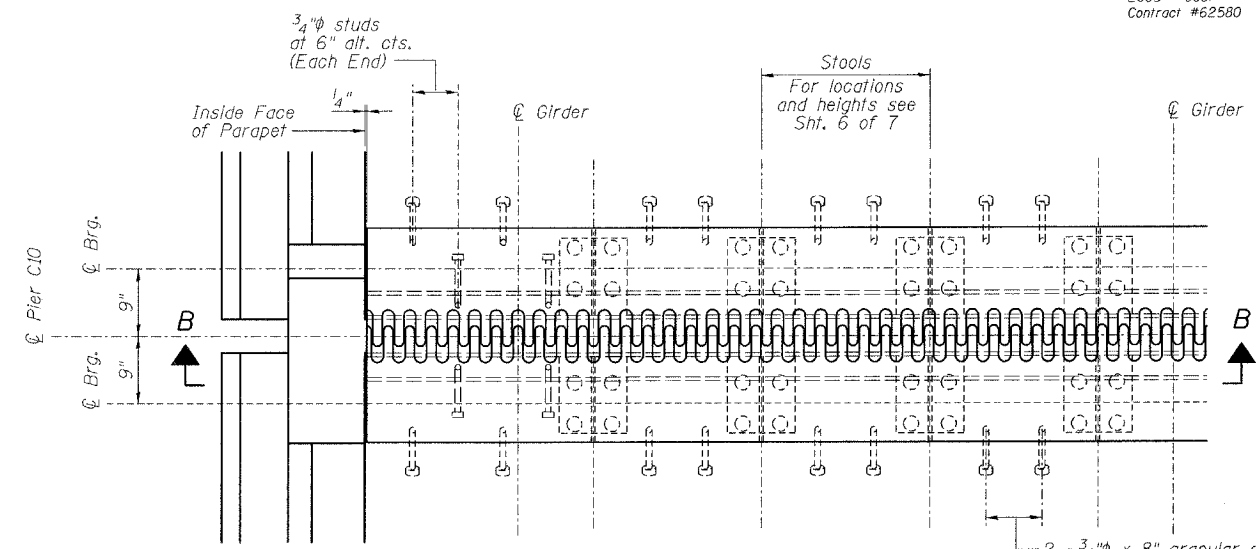
STATE OF ILLINOIS
DEPARTMENT OF TRANSPORTATION

ROUTE NO.	SECTION	COUNTY	SHEETS	SHEET NO.
FA1	*	COOK	419	283
FED. ROAD DIST. NO.	ILLINOIS	FED. AID PROJECT		

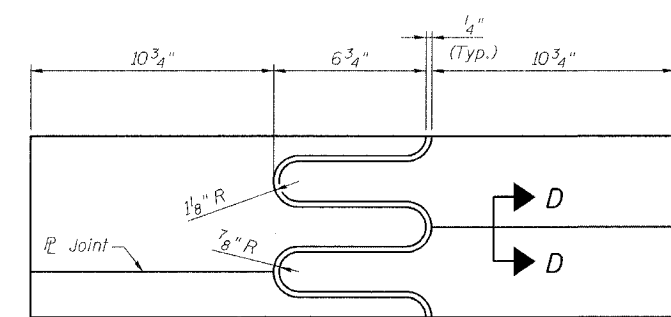
* 2005 - 008F
Contract #62580



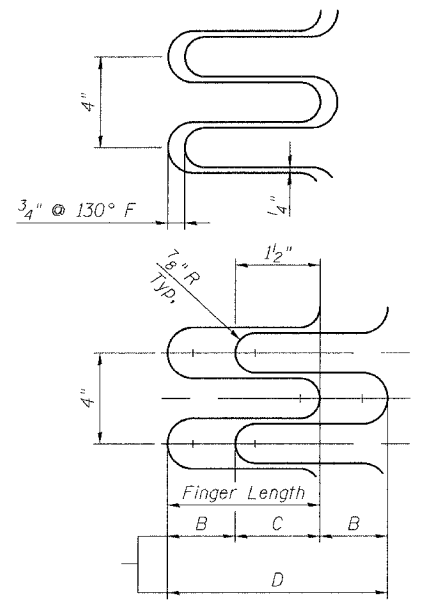
SECTION A-A



PLAN

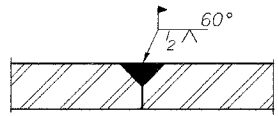


FLAME CUTTING DIAGRAM
(Proposed Finger \bar{r} - Cut from 2" x 2'-4 1/2" \bar{r})



FINGER DETAIL

Finger Length = 6 3/4"
Weld Length = 9 3/4"
Weld Size = 5/16"
Expansion length = 333.5'



SECTION D-D

NOTES

1. Stainless steel bolts, washers and nuts shall meet the requirements of ASTM A193.
2. The installation of all necessary hardware, stainless steel bolts, studs and washers, plates and angles shall be included with "Erecting Structural Steel".
3. For Section B-B, see Sheet 5 of 9.

REVISIONS	
NAME	DATE

ILLINOIS DEPARTMENT OF TRANSPORTATION
PIER C10 JOINT DETAILS
F.A.I. ROUTE 90/94 NORTHBOUND (DAN RYAN EXPRESSWAY)
OVER SOUTH BRANCH - CHICAGO RIVER
COOK COUNTY
S.N. 016-1113 - PIER C10

SCALE: VERT. DRAWN BY: HEBERLING
HORIZ. DESIGNED BY: SANFORD
DATE: 2/17/05 CHECKED BY:

GREENE & BRADFORD, INC.
OF SPRINGFIELD
PROFESSIONAL ENGINEERS AND ARCHITECTS
INCORPORATED
1001 W. MONROE ST. SUITE 200
SPRINGFIELD, ILLINOIS 62761
TEL: 217-223-8844 FAX: 217-223-8877

COMPUTER FILE NO.
04286-W04-FPJ
PROJECT 04286-W04
8/3/05-MML

FILE NAME = \$FILES
PLOT DATE = 8/3/2005
PLOT TIME = 9:46:57 AM
OPERATOR = michellel