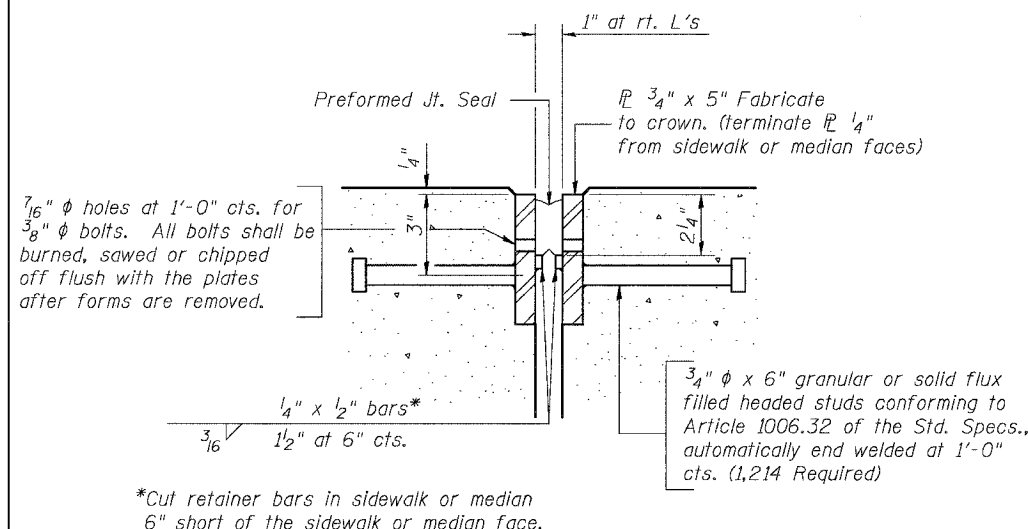
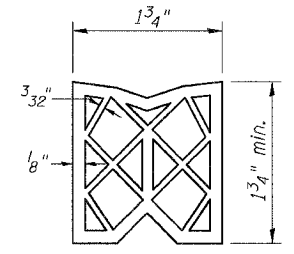


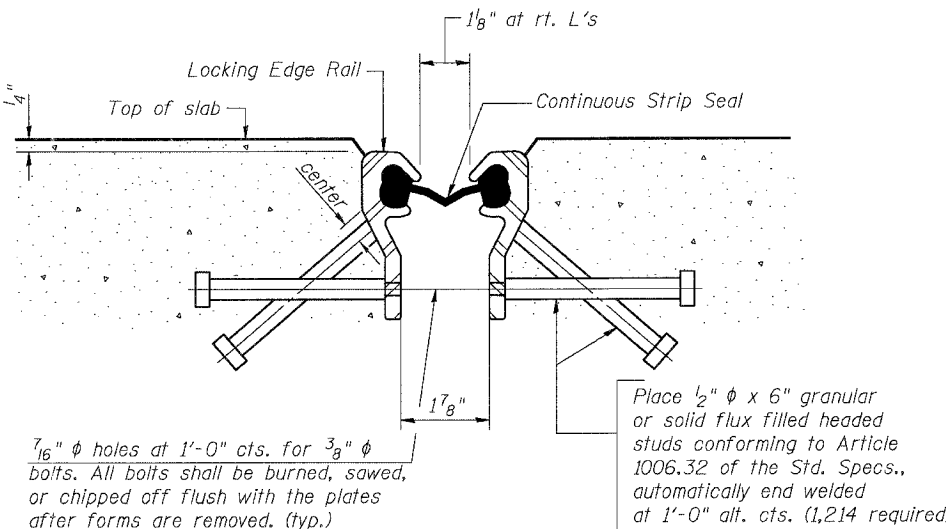
F.A.I.	SECTION	COUNTY	TOTAL SHEETS	SHEET NO.
94/90	2003-028F	COOK	419	312
STA.	TO STA.			
FED. ROAD DIST. NO.	ILLINOIS FED. AID PROJECT			
62580				



**SECTION THRU FIXED PREFORMED JOINT SEAL**



**PREFORMED JOINT SEAL**



**SECTION THRU FIXED STRIP SEAL JOINT**

**GENERAL NOTES**

Furnish PJS steel plates in segments of 20 feet maximum length. Maximum space between installed segments shall be 3/16". Seal space with silicone sealant suitable for structural steel.

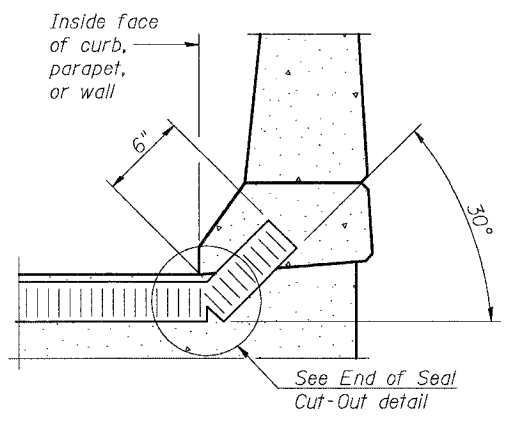
The strip seal shall be made continuous and shall have a minimum thickness of 1/4". The configuration of the strip seal shall match the configuration of the Locking Edge Rails.

The height and thickness of the Locking Edge Rails shown are minimum dimensions. The actual configuration of the Locking Edge Rails and matching strip seal may vary from manufacturer to manufacturer. Flanged edge rails will not be allowed.

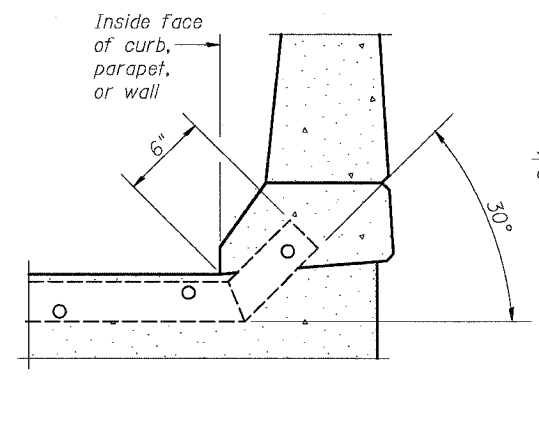
Locking Edge Rails may be spliced at slope discontinuities and stage construction joints.

The manufacturer's recommended installation methods shall be followed.

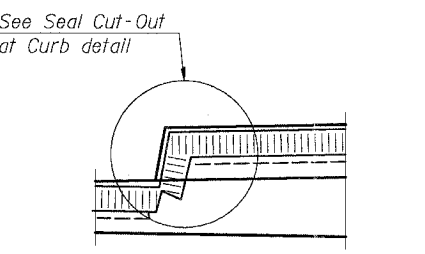
The joint opening and deck dimensions detailed on the superstructure are based on a preformed joint seal. If the contractor elects to use the alternate strip seal joint, the opening and deck dimensions shall be modified according to the dimensions detailed on this sheet. Required modifications shall be made at no additional cost to the State.



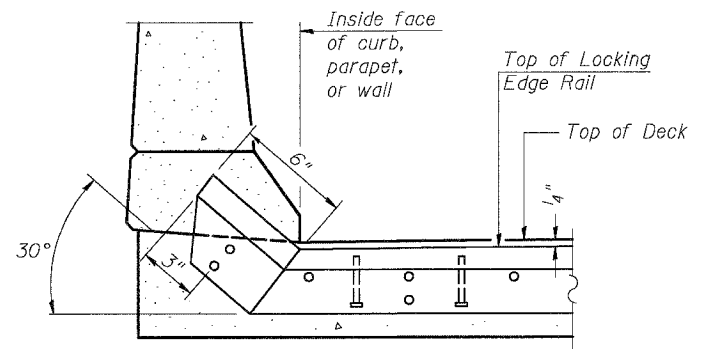
**AT CURB, PARAPET, OR WALL**  
(Showing seal)



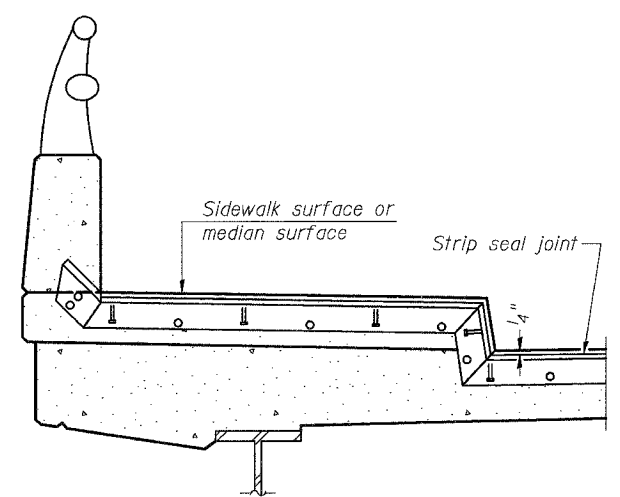
**AT CURB, PARAPET, OR WALL**  
(Showing plate)



**AT SIDEWALK OR MEDIAN**

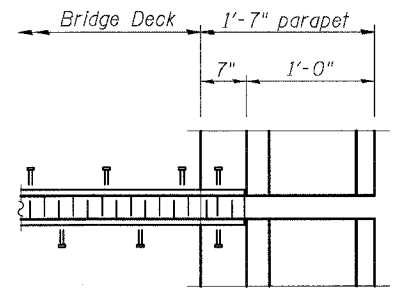


**AT CURB, PARAPET, OR WALL**

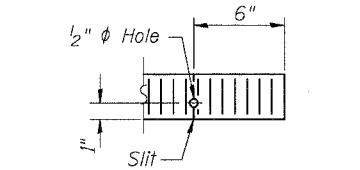


**AT SIDEWALK OR MEDIAN**

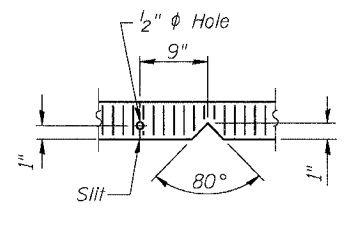
**TYPICAL END TREATMENTS FOR PREFORMED JOINT SEAL**



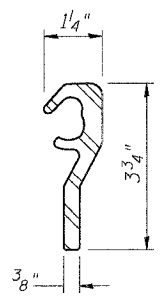
**PLAN AT PARAPET**



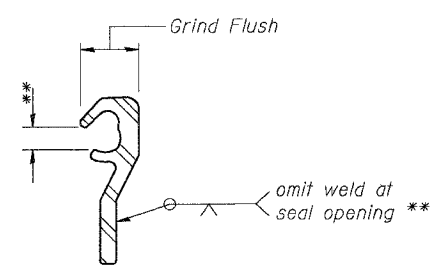
**END OF SEAL CUT-OUT**



**SEAL CUT-OUT AT CURB**



**LOCKING EDGE RAIL**



**LOCKING EDGE RAIL SPLICE**

The inside of the Locking Edge Rail groove shall be free of weld residue.

**TYPICAL END TREATMENTS FOR STRIP SEAL**

BOWMAN, BARRETT & ASSOCIATES INC.  
CONSULTING ENGINEERS  
Chicago, Illinois  
312.228.0100  
www.bbda-inc.com

FJ-BJS 9-01-03

REVISIONS	NAME	DATE

ILLINOIS DEPARTMENT OF TRANSPORTATION  
F.A.I. 94/90 (DAN RYAN EXPRESSWAY)  
NB DAN RYAN ELEVATED BRIDGE  
REPAIR FROM 15TH TO 28TH STREETS  
BRIDGE JOINT SYSTEM - FIXED

SCALE: NTS  
DATE: 8/12/2005  
DRAWN BY: BDC  
CHECKED BY: BLU

6/17/2005 11:54:53 AM