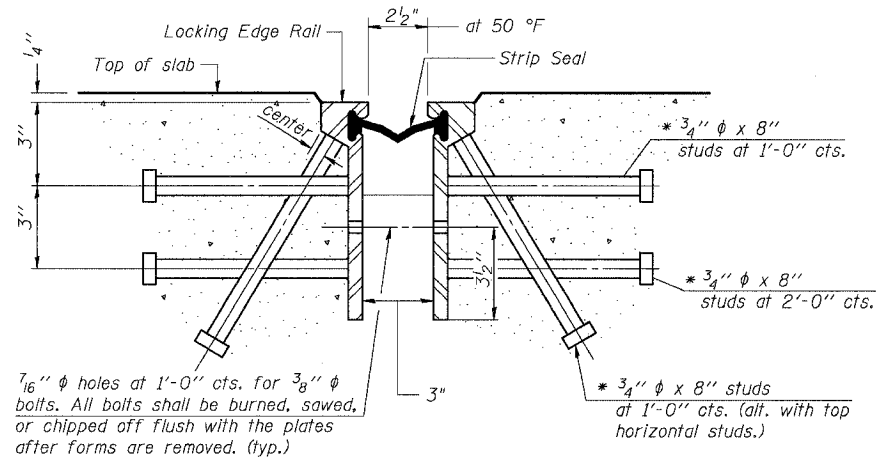
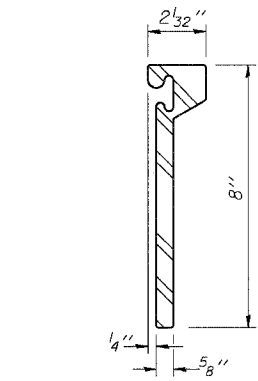


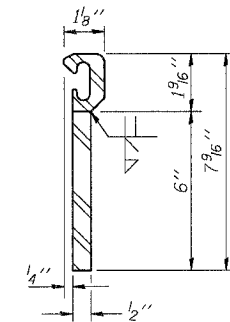
F.A.I.	SECTION	COUNTY	TOTAL SHEETS	SHEET NO.
94/90	2003-028F	COOK	419	314A
STA.		TO STA.		
FED. ROAD DIST. NO.	ILLINOIS	FED. AID PROJECT		
62580				



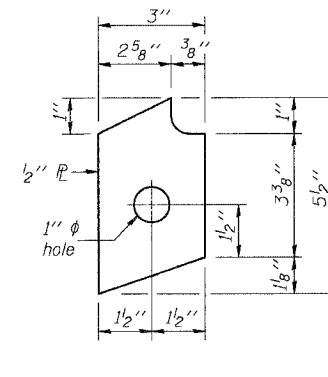
SECTION THRU ROLLED RAIL EXP. JOINT
(11,198 Studs Required)



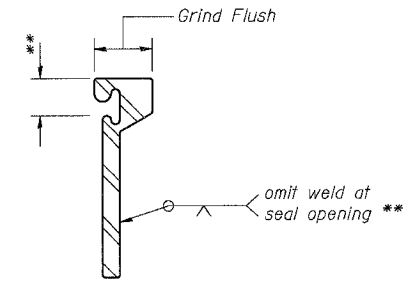
ROLLED (EXTRUDED) RAIL



WELDED RAIL



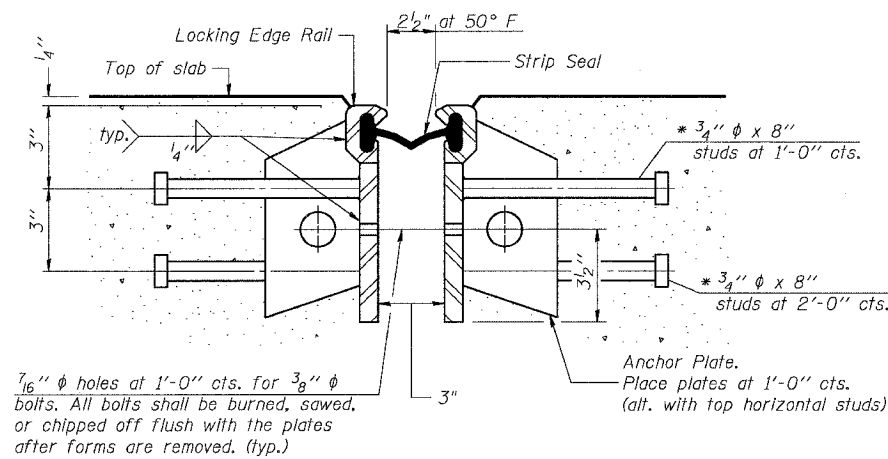
ANCHOR PLATE
(for welded rail)



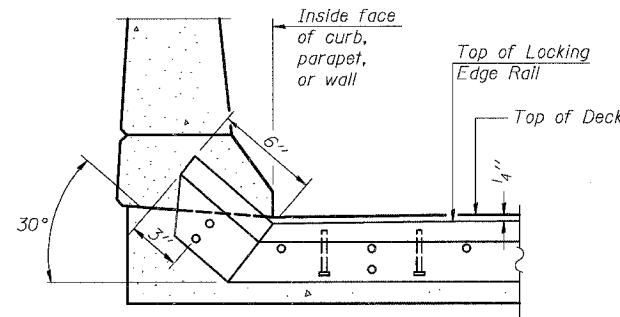
LOCKING EDGE RAIL SPLICE

The inside of the locking edge rail groove shall be free of weld residue.

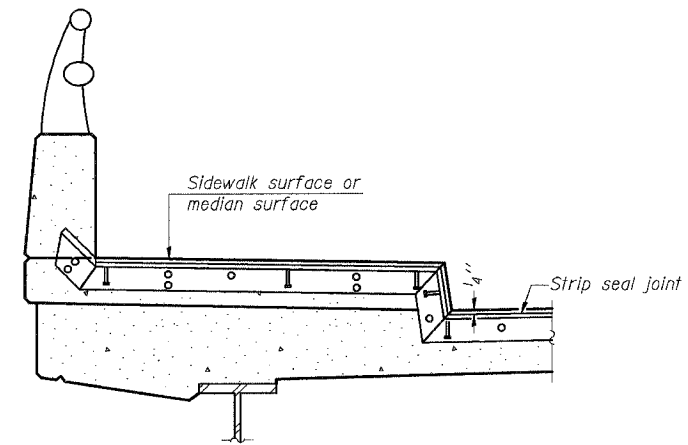
EXPANSION JOINT LOCKING EDGE RAIL DETAILS



SECTION THRU WELDED RAIL EXP. JOINT
(7,514 Studs Required)
(3,684 Anchor Plates Required)



AT CURB, PARAPET, OR WALL



AT SIDEWALK OR MEDIAN*

* Shorter plates with a single row of studs at 12" centers may be necessary on medians which are shallower than 9". See manufacturer's recommendation.

TYPICAL END TREATMENTS

GENERAL NOTES

The strip seal shall be made continuous and shall have a minimum thickness of 1/4". The configuration of the strip seal shall match the configuration of the Locking Edge Rails.
The height and thickness of the Locking Edge Rails shown are minimum dimensions. The actual configuration of the Locking Edge Rails and matching strip seal may vary from manufacturer to manufacturer. Flanged edge rails will not be allowed.
Locking Edge Rails may be spliced at slope discontinuities and stage construction joints. The manufacturer's recommended installation methods shall be followed.

REVISIONS	
NAME	DATE

ILLINOIS DEPARTMENT OF TRANSPORTATION	
F.A.I. 94/90 (DAN RYAN EXPRESSWAY)	
NB DAN RYAN ELEVATED BRIDGE	
REPAIR FROM 15TH TO 28TH STREETS	
STRIP SEAL EXPANSION JOINT	
ASSEMBLY DETAILS	
SCALE: NTS	DRAWN BY: BDC
DATE: 8/12/2005	CHECKED BY: BLU

BOWMAN, BARRETT & ASSOCIATES INC.
CONSULTING ENGINEERS
Chicago, Illinois
312.228.0100
www.bbainc.com

* Granular or solid flux filled headed studs conforming to Article 1006.32 of the Std. Specs., automatically end welded.

943625 AM 8/11/2005