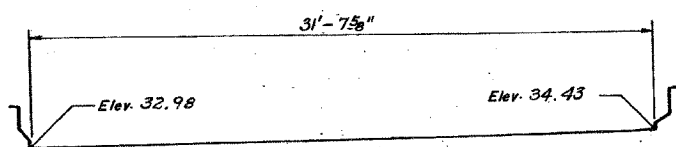


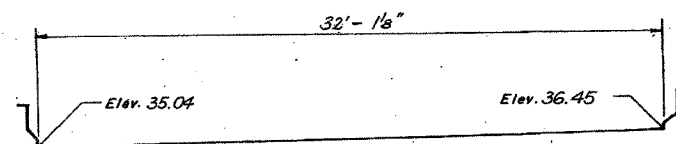
F.A.I.	SECTION	COUNTY	TOTAL SHEETS	SHEET NO.
94/90	2003-028F	COOK	419	324
STA.		TO STA.		
FED. ROAD DIST. NO.		ILLINOIS FED. AID PROJECT		

62580

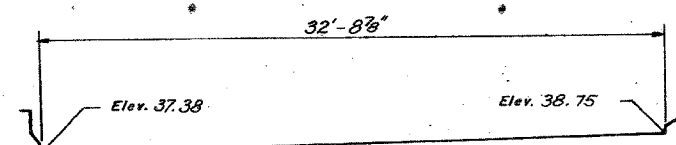
MAIN LINE (CONT.)



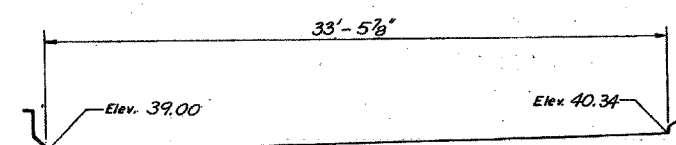
AT PIER 5
P.J.S. 4"



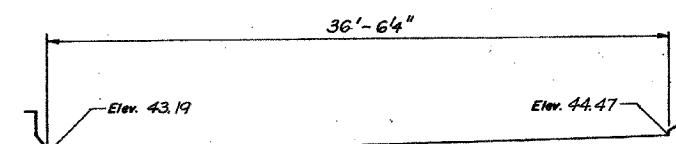
AT PIER 6
N.E.J. 2"



AT PIER 7
N.E.J. 2"

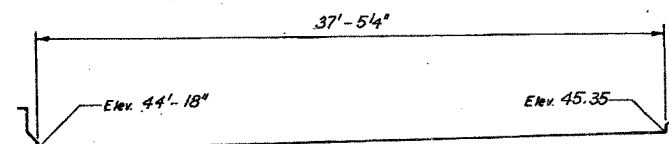


AT PIER 8
N.E.J. 2 1/2"

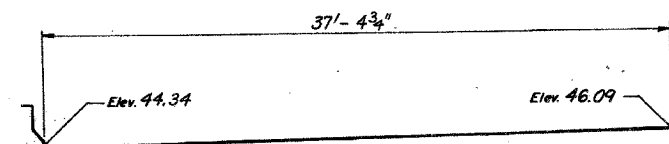


AT PIER 11
N.E.J. 2"

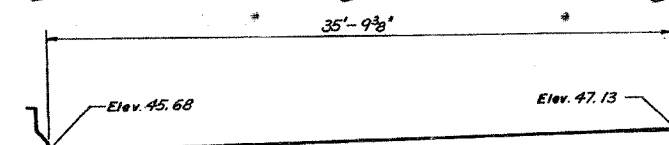
MAIN LINE (CONT.)



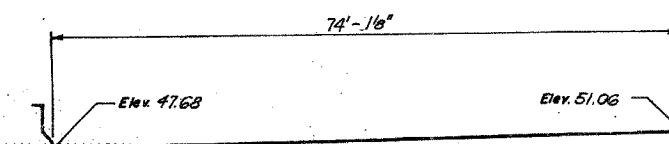
AT PIER 12
N.E.J. 2"



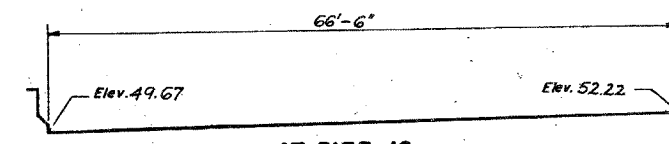
AT PIER 13
N.E.J. 2"



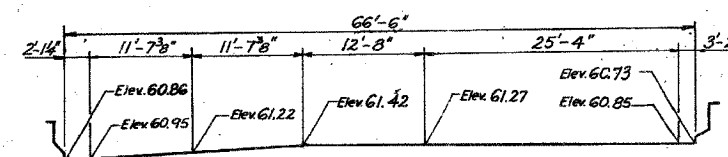
AT PIER 14
N.E.J. 2 1/2"



AT PIER 16
N.E.J. 2"

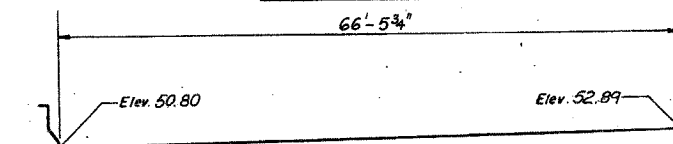


AT PIER 18
N.E.J. 2"

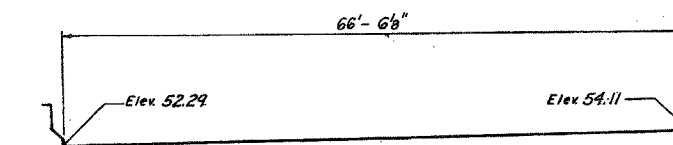


AT PIER 26 (FINGER PLATE JOINT)

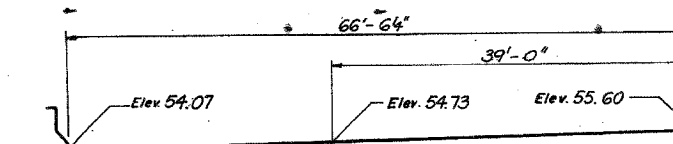
MAIN LINE (CONT.)



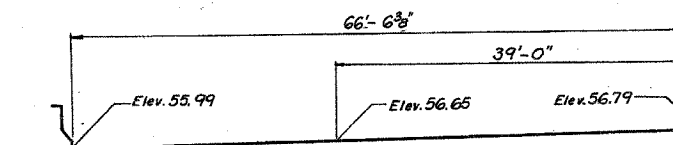
AT PIER 19
N.E.J. 2"



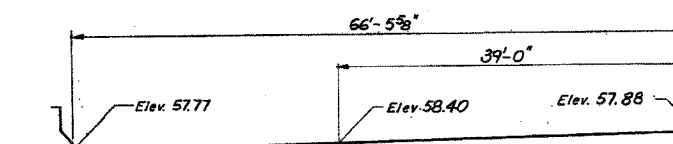
AT PIER 20
N.E.J. 2"



AT PIER 21
N.E.J. 2"



AT PIER 22
N.E.J. 2"



AT PIER 23
N.E.J. 2"

ALL PROFILES DRAWN
LOOKING UPSTATION

NOTES:

- For Steel Finger Plate Jt. See Sheet TJ1, Vol. 13.
- For P.J.S. Detail See Sheet TJ3, Vol. 13.
- For N.E.J. Detail See Sheet TJ2, Vol. 13.

SHEET J36 OF 98

REVISIONS	
Name	Date

STATE OF ILLINOIS
DEPARTMENT OF TRANSPORTATION
F.A.I. ROUTE 90/94 (DAN RYAN EXPRESSWAY)
SECTION 1986-0778-R-COOK COUNTY
NB MAINLINE RECONSTRUCTION
STRUCTURE 016-1117 & 1118 MAINLINE & RAMP 141
TRANSVERSE DECK JOINT ELEVATIONS
Scale: NONE
Date: AUGUST 1998
Drawn By: SR
Checked By: SK
ENVIRODYNE ENGINEERS INC.
Chicago, Illinois

SHEET J36 OF 98

REVISIONS	NAME	DATE

ILLINOIS DEPARTMENT OF TRANSPORTATION
F.A.I. 94/90 (DAN RYAN EXPRESSWAY)
NB DAN RYAN ELEVATED BRIDGE
REPAIR FROM 15TH TO 28TH STREETS
EXISTING PLAN INFORMATION
SN 016-1117 & 016-1118
SCALE: NTS
DATE: 10/14/2005
DRAWN BY: BDC
CHECKED BY: BLU

BOWMAN, BARRETT & ASSOCIATES INC.
CONSULTING ENGINEERS
Chicago, Illinois
312.228.0100
www.bbainc.com

FOR INFORMATION ONLY