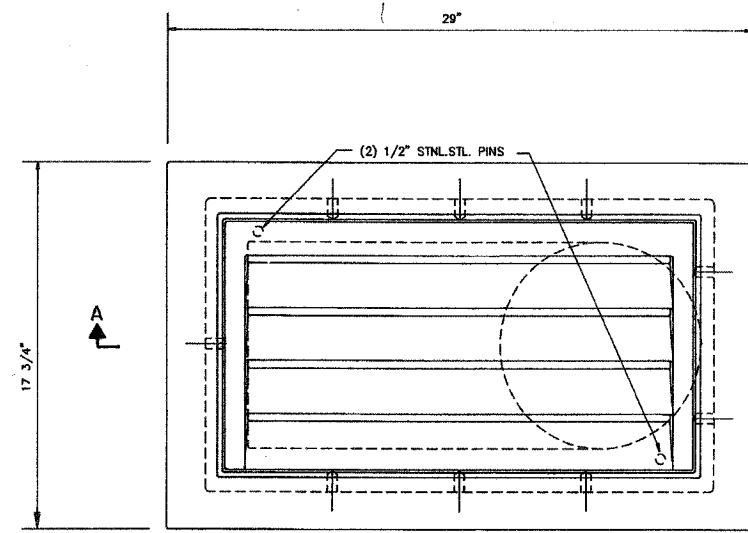
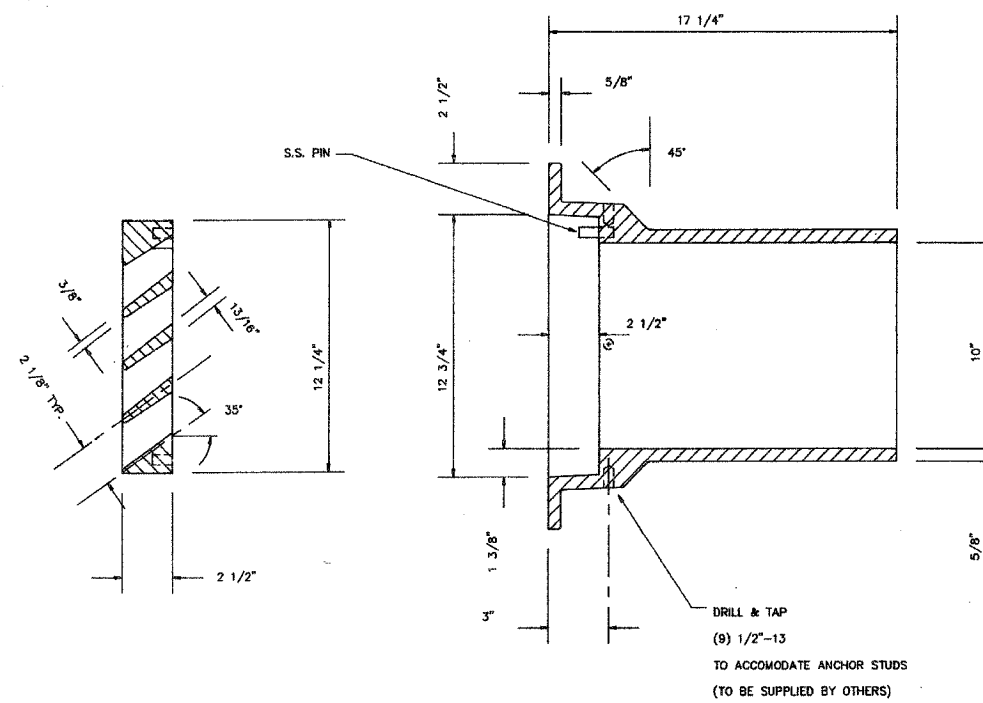


F.A.I.	SECTION	COUNTY	TOTAL SHEETS	SHEET NO.
94/90	2003-028F	COOK	419	329
STA.		TO STA.		
FED. ROAD DIST. NO.		ILLINOIS FED. AID PROJECT		
62580				

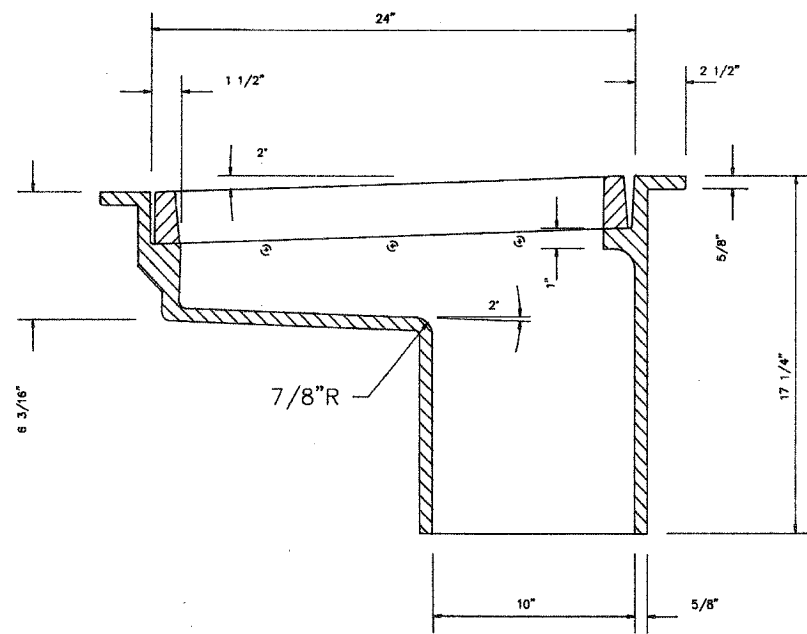


PLAN



BRIDGE SCUPPER - TYPE "B"

NF-0332 435
ESTIMATED WEIGHT 235 #



SECTION A-A

SCHEDULE OF QUANTITIES	
STRUCTURE	No. REQUIRED
016-0137	0
016-1110	0
016-1111	0
016-1112	1
016-1113	2
016-1114	10
016-1070	0
016-1115	3
016-1140	0
016-1047	0
016-1116	0
016-1117	7
016-1118	3
TOTAL	26

ALL MATERIALS SHOWN ON THIS SHEET ARE FURNISHED UNDER A SEPARATE SUPPLY CONTRACT (SECTION 1988-004 I), UNLESS NOTED OTHERWISE.

MATERIAL: CAST GRAY IRON ASTM A-48, CLASS 35 B
FINISH: NONE

SHEET 855 OF 856

REVISIONS	
Name	Date

STATE OF ILLINOIS
DEPARTMENT OF TRANSPORTATION
F.A.I. ROUTE 90/94 (DAN RYAN EXPRESSWAY)
SECTION 1985-077B2 - COOK COUNTY
N.B. MAINLINE RECONSTRUCTION
SCUPPERS - ALL STRUCTURES
BRIDGE SCUPPER TYPE B
Scale: NONE
Date: AUGUST, 1988
Checked By: W.R.K.
ENVIROTECH ENGINEERS INC.
Chicago, Illinois

REVISIONS	
NAME	DATE

ILLINOIS DEPARTMENT OF TRANSPORTATION
F.A.I. 94/90 (DAN RYAN EXPRESSWAY)
NB DAN RYAN ELEVATED BRIDGE
REPAIR FROM 15TH TO 28TH STREETS
EXISTING PLAN INFORMATION
SCUPPER DETAILS - TYPE B
SCALE: NTS
DATE: 10/14/2005
DRAWN BY: BDC
CHECKED BY: BLU

FOR INFORMATION ONLY

BOWMAN, BARRETT & ASSOCIATES INC.
CONSULTING ENGINEERS
Chicago, Illinois
312.228.0100
www.bbandainc.com