

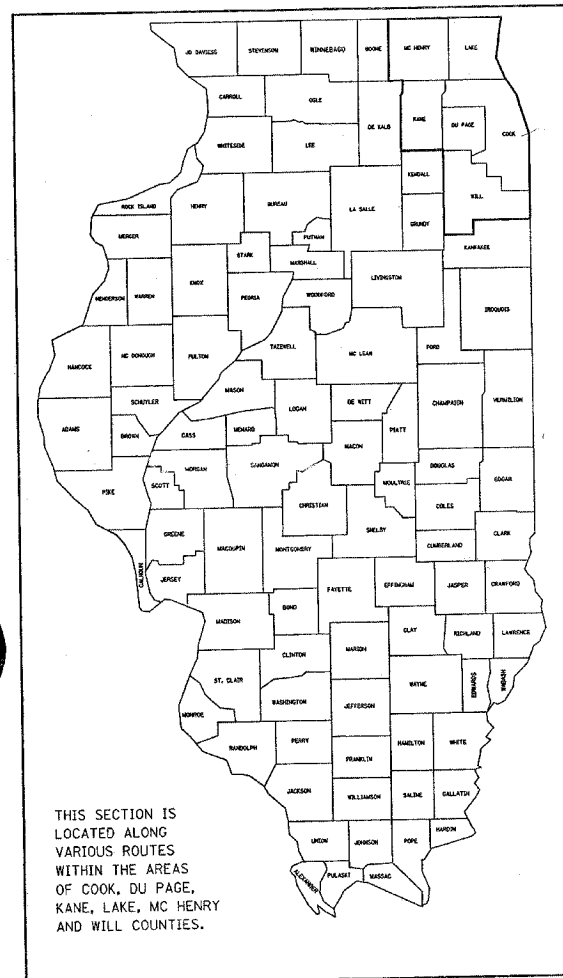
STATE OF ILLINOIS
DEPARTMENT OF TRANSPORTATION
DIVISION OF HIGHWAYS
PLANS FOR PROPOSED HIGHWAY

FOR INDEX OF SHEETS, SEE SHEET NO. 2

FA	RTE	SECTION	COUNTY	TOTAL SHEETS	SHEET NO.
		2004-090 I	*	13	1
*COOK, DU PAGE, KANE, LAKE, MCHENRY AND WILL					
CONTRACT NO. 62830					

SCALES { PLAN
 PROFILE HORIZ.
 PROFILE VERT.
 CROSS SECTIONS

ROUTE: VARIOUS DISTRICT ONE
SECTION: 2004-090 I
COUNTIES: VARIOUS (COOK, DU PAGE, KANE, LAKE MCHENRY AND WILL)
ARTERIAL HIGHWAY CLEANING (SWEEPING)
C-91-349-04



REGION ONE/ BUREAU OF DESIGN
 PLAN PREPARATION ENGINEER: R. BORO (847)705-4178

SEE LOCATION MAPS - SHEETS 5 THRU 11

ARTERIAL		
PLAN SHEET NO.	TEAM SECTION	KEY LOCATIONS
5	WOODSTOCK TEAM SECTION	W1 - W26
6	GRAYSLAKE TEAM SECTION	G1 - G73
6	GURNEE TEAM SECTION	GU1 - GU48
7	ST. CHARLES TEAM SECTION	SC1 - SC40
8	ARLINGTON TEAM SECTION	AH1 - AH32
8	NORTHBROOK TEAM SECTION	NB1 - NB65
8	RODENBURG ARTERIAL PORTION	R1 - R6
8	NORTHSIDE TEAM SECTION	NS1 - NS27
9	ALSIP TEAM SECTION	A1 - A21
9	HILLSIDE TEAM SECTION	H1 - H39
9	HARVEY TEAM SECTION	HY1 - HY47
10	NAPERVILLE TEAM SECTION	NA1 - NA16
10	OAKBROOK TEAM SECTION	OB1 - OB13
11	JOLIET TEAM SECTION	JI - J8
11	NEW LENOX TEAM SECTION	NL1 - NL21

STATE OF ILLINOIS
DEPARTMENT OF TRANSPORTATION
DIVISION OF HIGHWAYS

SUBMITTED Oct 17 2005
Dave Ovi
 DEPUTY DIRECTOR OF HIGHWAYS, REGION ENGINEER

October 14 2005
Mike Hae/10
 ENGINEER OF DESIGN AND ENVIRONMENT

October 14 2005
Eric E. Harms/10
 DEPUTY DIRECTOR, DIVISION OF HIGHWAYS

PRINTED BY THE AUTHORITY OF THE STATE OF ILLINOIS

J.U.L.I.E. JOINT UTILITY LOCATION INFORMATION FOR EXCAVATION
 TOLL FREE PHONE: 1-800-892-0123

CONTRACT NO. 62830

F. A. RTE.	SECTION	COUNTY	TOTAL SHEETS	SHEET NO.
VAR.	2004-090 I	VARIOUS	13	2
STA.	TO STA.			
FED. ROAD DIST. NO.	ILLINOIS	FED. AID PROJECT		

* COOK, DU PAGE, KANE, LAKE, MC HENRY AND WILL
 CONTRACT NO. 62830

INDEX OF SHEETS

STATE STANDARDS

- 1. TITLE SHEET
- 2. INDEX OF SHEETS
APPLICABLE STATE STANDARDS
- 3. SUMMARY OF QUANTITIES
SCHEDULE OF CLEANING STARTING DATES
- 4. ARTERIAL TYPICAL SECTIONS
- 5.- 11. LOCATION SHEETS
- 12. DISTRICT ONE DETAILS: TRAFFIC CONTROL DEVICES FOR
HIGHWAY AND SIGN CLEANING OPERATIONS-DAY TIME ONLY
- 13. TRAFFIC CONTROL DETAILS FOR SHOULDER CLOSURES
AND PARTIAL RAMP CLOSURES

- 701001-01 OFF-ROAD OPERATION 2L, 2W, 15' MIN. AWAY FOR SPEEDS >45 MPH
- 701006-02 OFF-ROAD OPERATION 2L, 2W, 15' TO PAVEMENT EDGE FOR SPEEDS >45 MPH
- 701101-01 OFF-ROAD OPERATION 2L, 2W, DAY ONLY FOR SPEEDS >45 MPH
- 701301-02 LANE CLOSURE, 2L 2W, SHORT TIME OPERATIONS
- 701311-02 LANE CLOSURE, 2L 2W, MOVING OPERATIONS - DAY ONLY
- 7011411-03 LANE CLOSURE, MULTILANE AT ENTERANCE/EXIT RAMP FOR SPEEDS >45 MPH
- 702001-05 TRAFFIC CONTROL DEVICES

REVISIONS	
NAME	DATE

ILLINOIS DEPARTMENT OF TRANSPORTATION
 INDEX OF SHEETS AND STATE STANDARDS
 SCALE: NONE
 DATE: 10/17/2005
 DRAWN BY
 CHECKED BY

F. A. RTE.	SECTION	COUNTY	TOTAL SHEETS	SHEET NO.
VAR.	2004-090 I	VARIOUS	13	3
STA.		TO STA.		
FED. ROAD DIST. NO. -	ILLINOIS	FED. AID PROJECT		

CONTRACT NO. 62830

SUMMARY OF QUANTITIES

100% STATE
URBAN

CODE NO.	ITEM	UNIT	MAIN QUANTITY
X0323141	SUPPLEMENTAL SWEEPING	MILE	150
X0330500	INITIAL ARTERIAL CLEANING CYCLE	EACH	1
X0330600	FULL ARTERIAL CLEANING CYCLE	EACH	2

ARTERIAL CLEANING SCHEDULE OF STARTING DATES - 2006

INITIAL CLEANING CYCLE	----	MARCH 1
1st FULL CLEANING CYCLE	----	JUNE 1
2nd FULL CLEANING CYCLE	----	SEPTEMBER 1 (RECOMMENDED TO BE COMPLETED ON OR BEFORE NOVEMBER 30)

ARTERIAL CLEANING SCHEDULE OF STARTING DATES - 2007

INITIAL CLEANING CYCLE	----	MARCH 1
1st FULL CLEANING CYCLE	----	JUNE 1
2nd FULL CLEANING CYCLE	----	SEPTEMBER 1 (RECOMMENDED TO BE COMPLETED ON OR BEFORE NOVEMBER 30)

NOTES:

- SCHEDULE MAY VARY AS DIRECTED BY THE ENGINEER.
- THE CONTRACTOR MAY NOT START CLEANING CYCLES BEFORE THE DATES SCHEDULED IN THE PLANS WITHOUT WRITTEN AUTHORIZATION FROM THE ENGINEER.
- NO WORK WILL BE ALLOWED DURING ANY LEGAL HOLIDAY PERIOD.

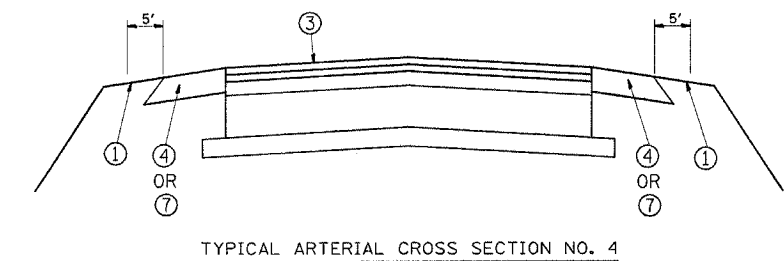
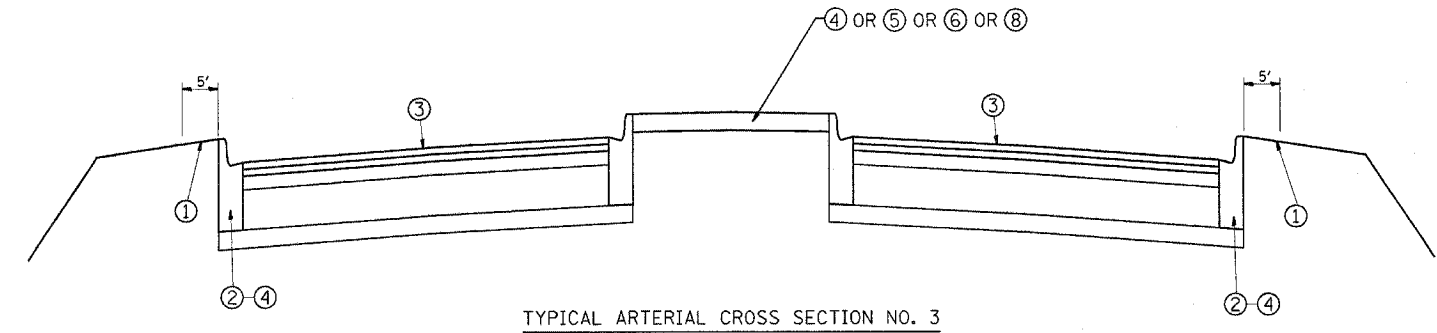
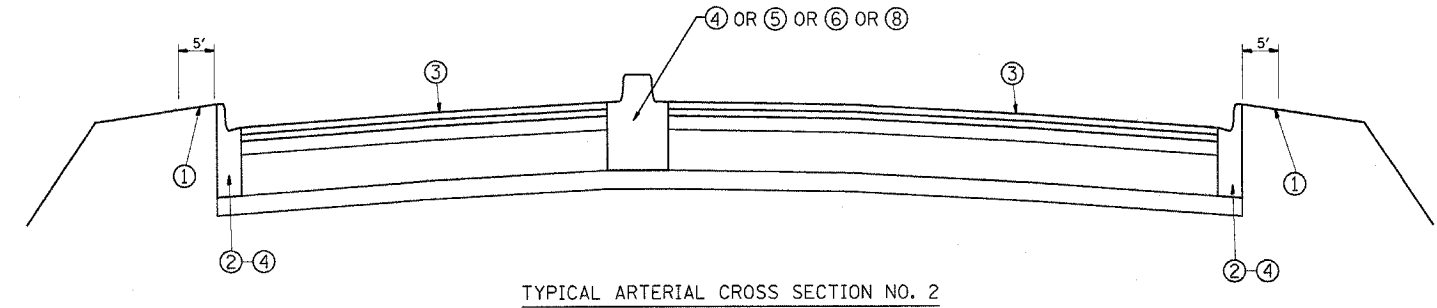
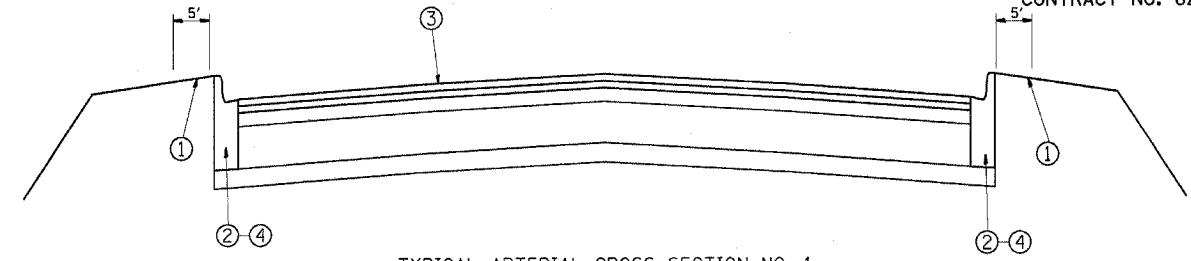
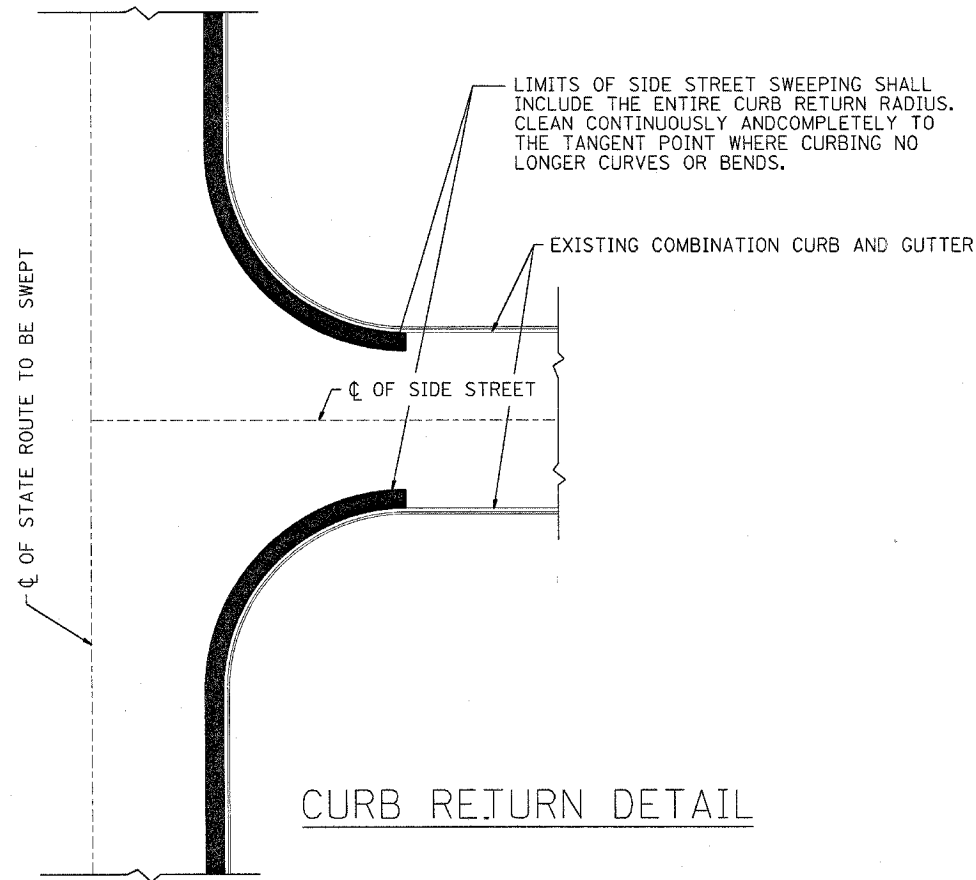
REVISIONS	
NAME	DATE

ILLINOIS DEPARTMENT OF TRANSPORTATION
SUMMARY OF QUANTITIES
AND
SCHEDULE OF STARTING DATES

SCALE: NONE
DATE: 10/17/2005

DRAWN BY
CHECKED BY

CONTRACT NO. 62830



LEGEND

- ① AREA OF RUBBISH REMOVAL
- ② CURB AND GUTTER
- ③ TRAVELED ROADWAY
- ④ STABILIZED SHOULDER OR MEDIAN
- ⑤ STEEL PLATE GUARD
- ⑥ CONCRETE BARRIER
- ⑦ AGGREGATE SHOULDER (TO BE CLEANED BY HAND TOOLS OF DEBRIS/LITTER)
- ⑧ RAISED CONCRETE MEDIAN

NOTE:
SLOPE WALLS UNDER BRIDGES ARE NOT INCLUDED IN AREAS TO BE CLEANED.

REVISIONS	
NAME	DATE

ILLINOIS DEPARTMENT OF TRANSPORTATION
EXPRESSWAY AND ARTERIAL HIGHWAY
CLEANING (SWEEPING)

**TYPICAL
ARTERIAL CROSS SECTIONS
AND CURB RETURN DETAIL**

SCALE: NONE
DATE: 10/17/2005

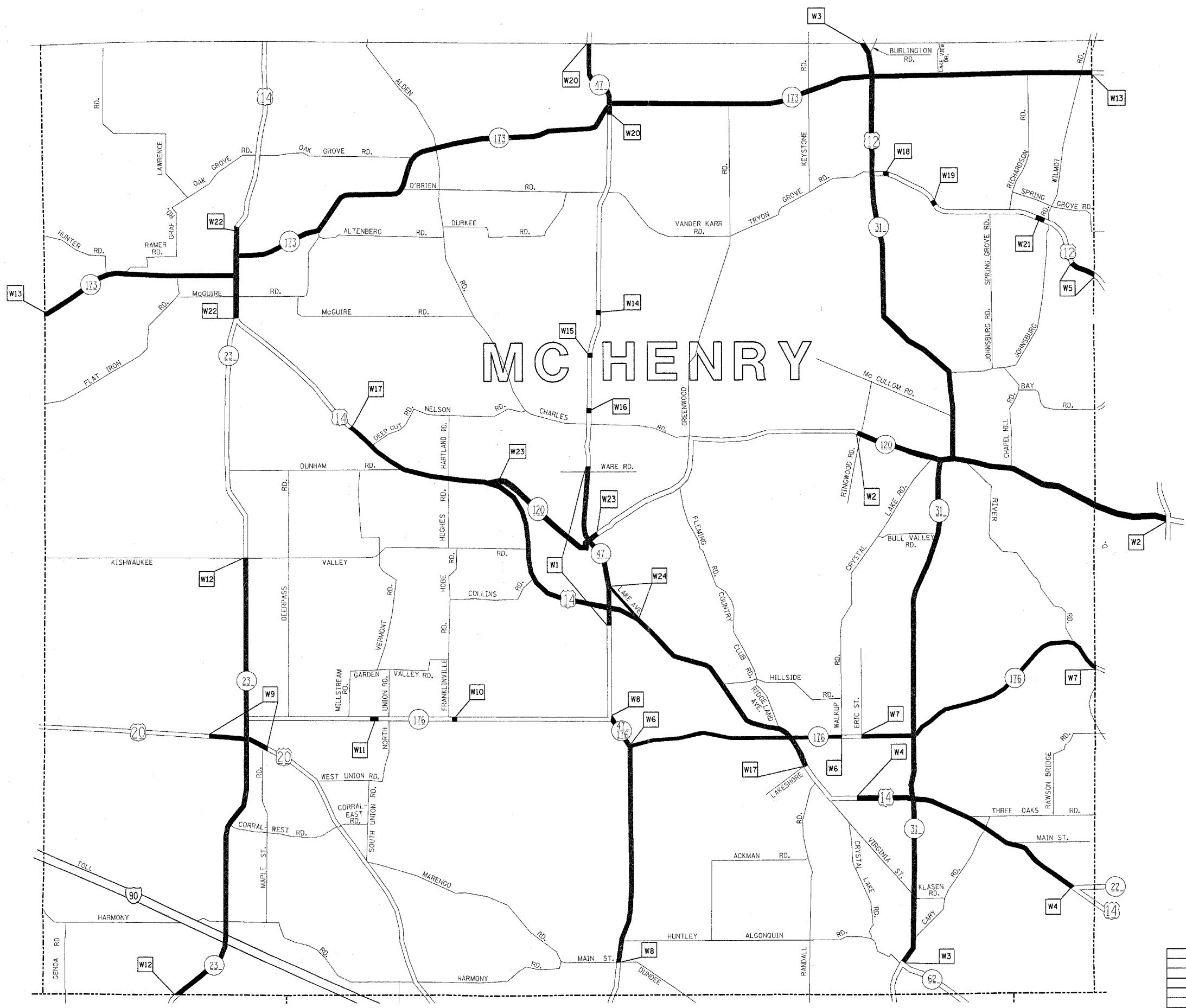
DRAWN BY
CHECKED BY

S. A. WFE.	SECTION	COUNTY	TOTAL SHEETS	SHEET NO.
VAR.	2004-090 I	VARIOUS	13	5
STA.	TO STA.			
FED. ROAD DIST. NO.	ILLINOIS	FED. AID PROJECT		

CONTRACT NO. 62830



TEAM SECTION	KEY LOCATIONS
WOODSTOCK	W1 - W24



- DISTRICT NO. 1
- STATE HIGHWAYS & EXPRESSWAYS WITHIN STATE JURISDICTION (EXCEPT TOLLWAYS)
 - STATE HIGHWAYS & EXPRESSWAYS TO BE CLEANED
 - - - FUTURE HIGHWAYS
 - VARIOUS AGENCIES HIGHWAYS

REVISIONS	
NAME	DATE

ILLINOIS DEPARTMENT OF TRANSPORTATION

ARTERIAL CLEANING
LOCATION MAP
MCHENRY COUNTY
WOODSTOCK TEAM SECTION

SCALE: VERT. 1"=1.5 MILES
HORIZ. 1"=1.5 MILES

DATE: 10/17/2005

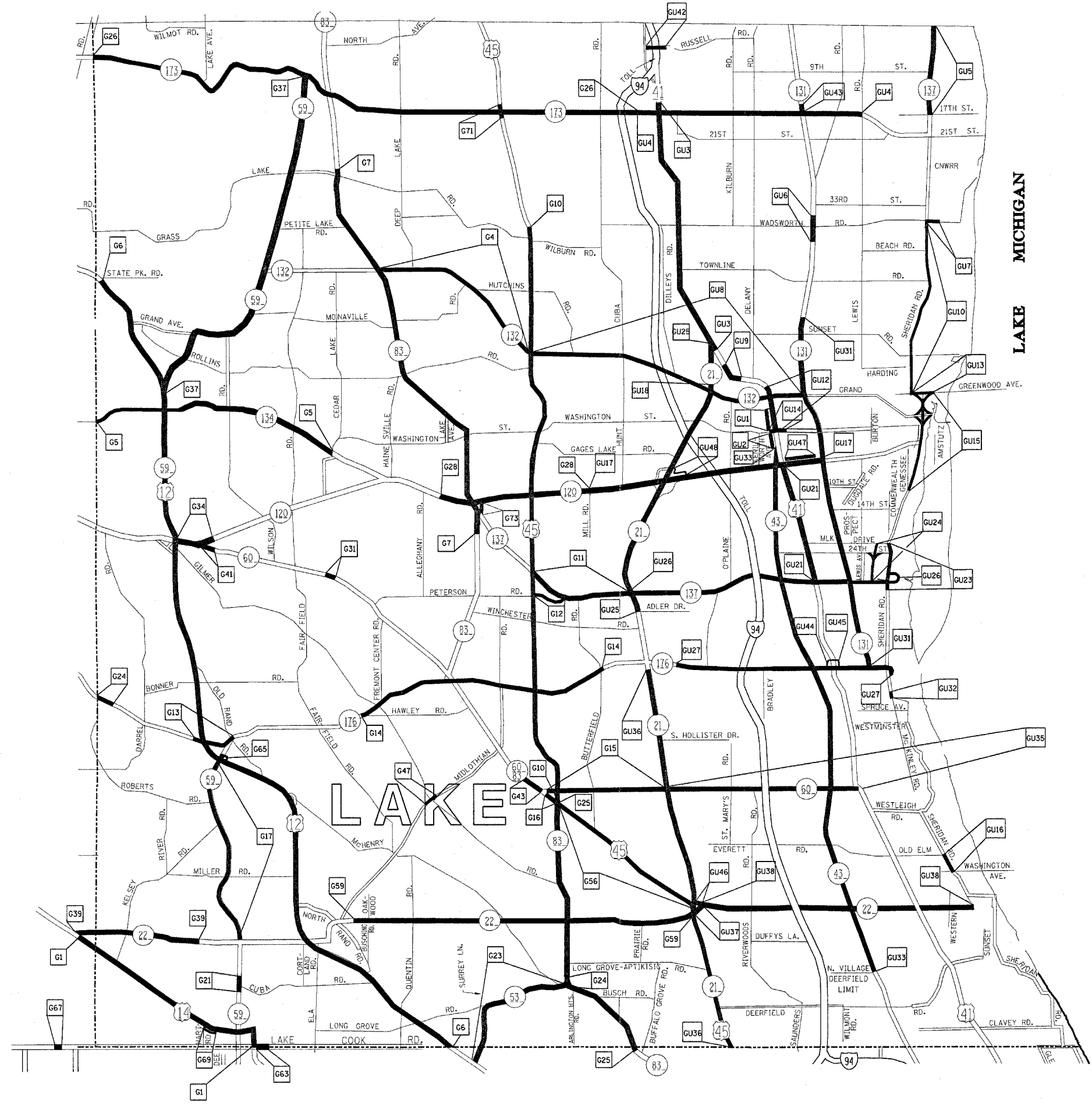
DRAWN BY: CADD
CHECKED BY:

F. & ETC.	SECTION	COUNTY	TOTAL SHEETS	SHEET NO.
VAR.	2004-090 I	VARIOUS	13	6
STA.	TO STA.			
FED. ROAD DIST. NO.	ILLINOIS	FED. AID PROJECT		

CONTRACT NO. 62830



TEAM SECTION	KEY LOCATIONS
GRAYSLAKE	G1 - G73
GURNEE	GU1 - GU48



- DISTRICT NO. 1
- STATE HIGHWAYS & EXPRESSWAYS WITHIN STATE JURISDICTION (EXCEPT TOLLWAYS)
 - STATE HIGHWAYS & EXPRESSWAYS TO BE CLEANED
 - FUTURE HIGHWAYS
 - VARIOUS AGENCIES HIGHWAYS

ILLINOIS DEPARTMENT OF TRANSPORTATION
ARTERIAL CLEANING LOCATION MAP
 LAKE COUNTY
 GRAYSLAKE AND GURNEE TEAM SECTIONS

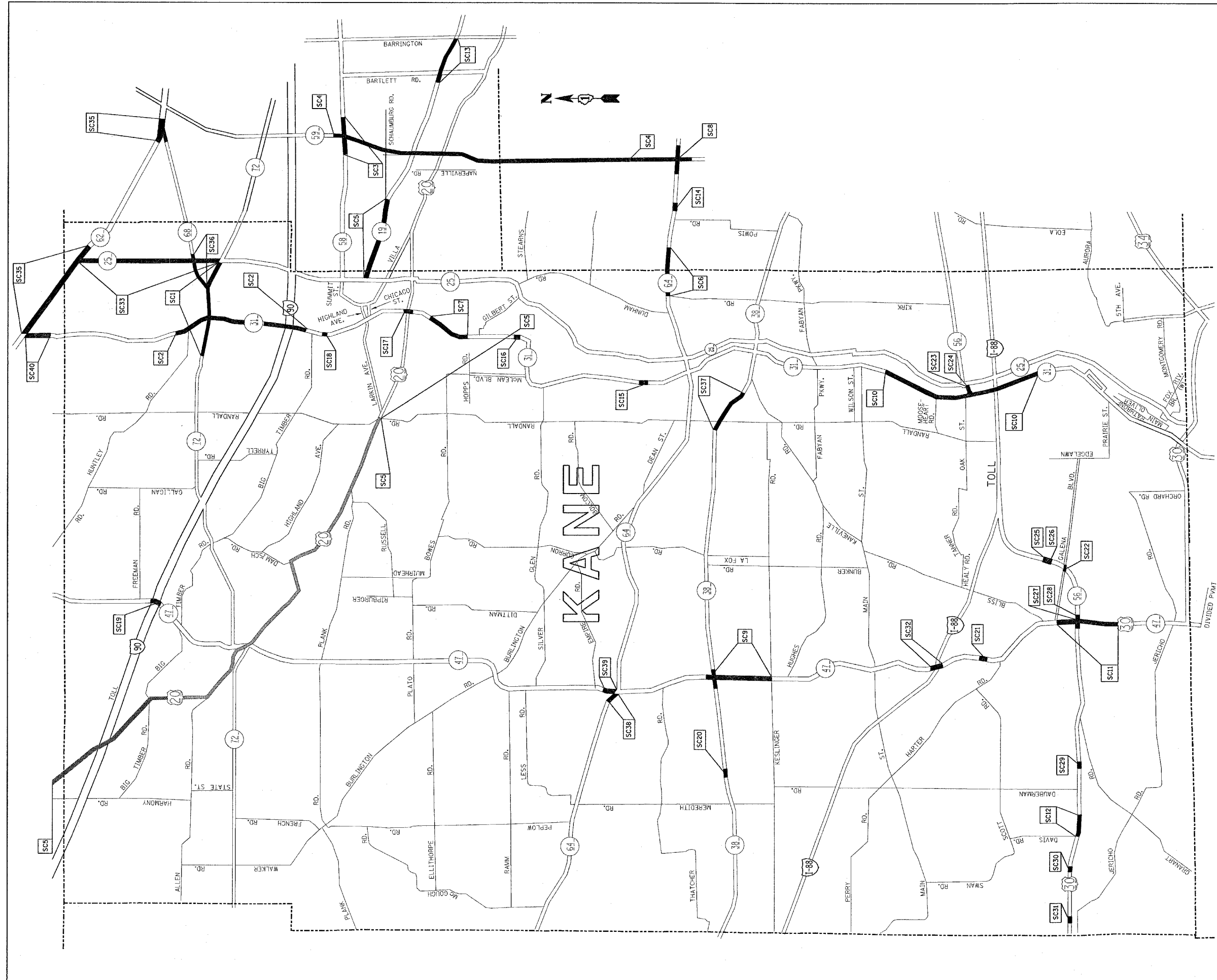
REVISIONS	
NAME	DATE

SCALE: 1"=1.5 MILES
 DATE: 10/17/2005
 DRAWN BY
 CHECKED BY

10/17/2005
 c:\projects\m127988\m127988a.mxd

F. A. RT.	SECTION	COUNTY	TOTAL SHEETS	SHEET NO.
VAR.	2004-090 I	VARIOUS	13	7
STA.	TO STA.			
FED. ROAD DIST. NO.	ILLINOIS	FED. AID PROJECT		

CONTRACT NO. 62830



TEAM SECTION
ST. CHARLES

KEY LOCATIONS
SC1 - SC39

- DISTRICT NO. 1
- STATE HIGHWAYS & EXPRESSWAYS WITHIN STATE JURISDICTION (EXCEPT TOLLWAYS)
 - STATE HIGHWAYS & EXPRESSWAYS TO BE CLEANED
 - FUTURE HIGHWAYS
 - VARIOUS AGENCIES HIGHWAYS

ILLINOIS DEPARTMENT OF TRANSPORTATION

ARTERIAL CLEANING
LOCATION MAP
KANE COUNTY
ST. CHARLES TEAM SECTIONS

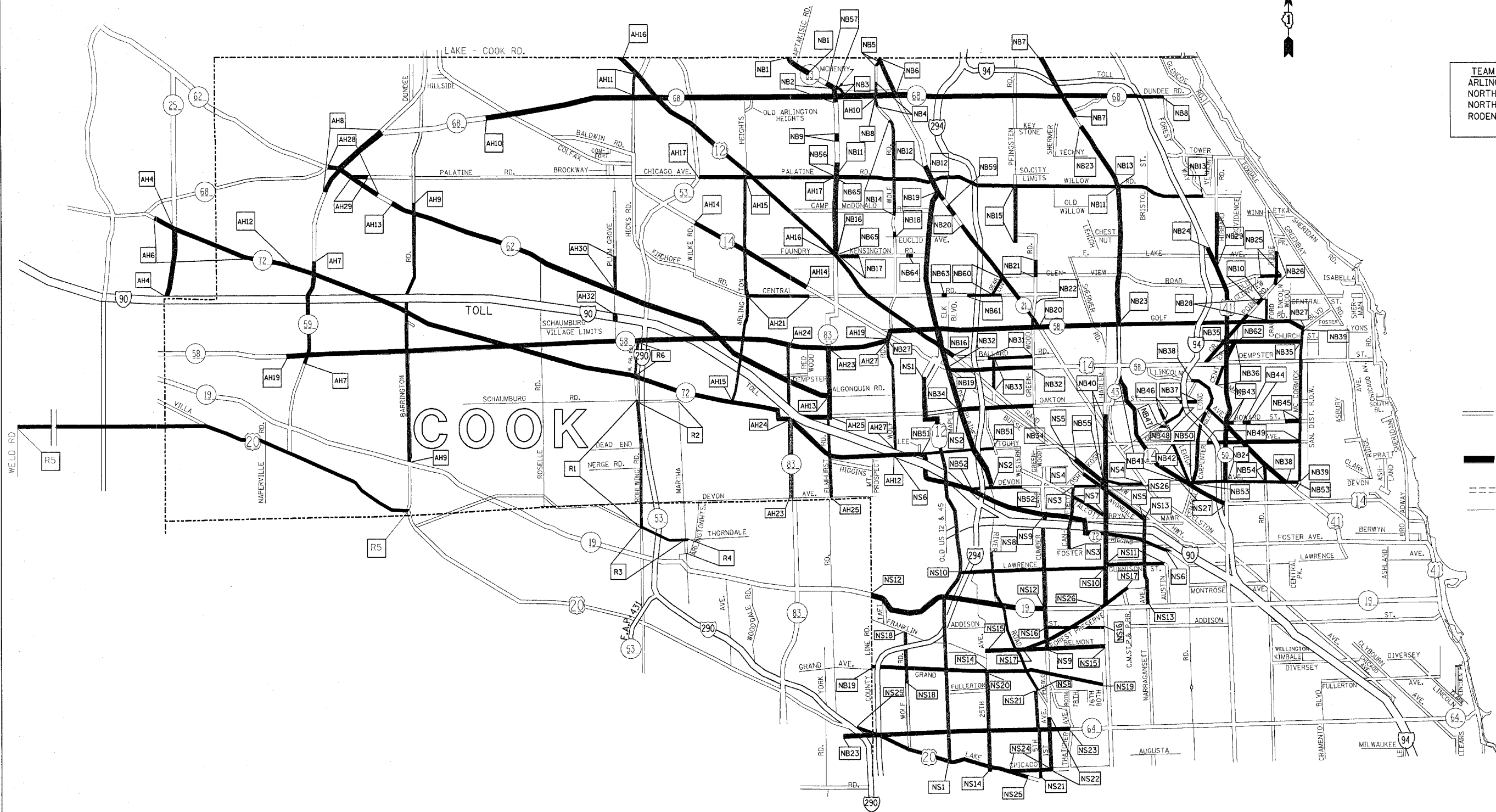
SCALE: 1"=1.5 MILES
DATE: 10/17/2005

DRAWN BY: CADD
CHECKED BY:

REVISIONS	
NAME	DATE



TEAM SECTION	KEY LOCATIONS
ARLINGTON HTS.	AH1-AH32
NORTHBROOK	NB1-NB65
NORTHSIDE	NS1-NS27
RODENBURG	R1-R6



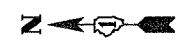
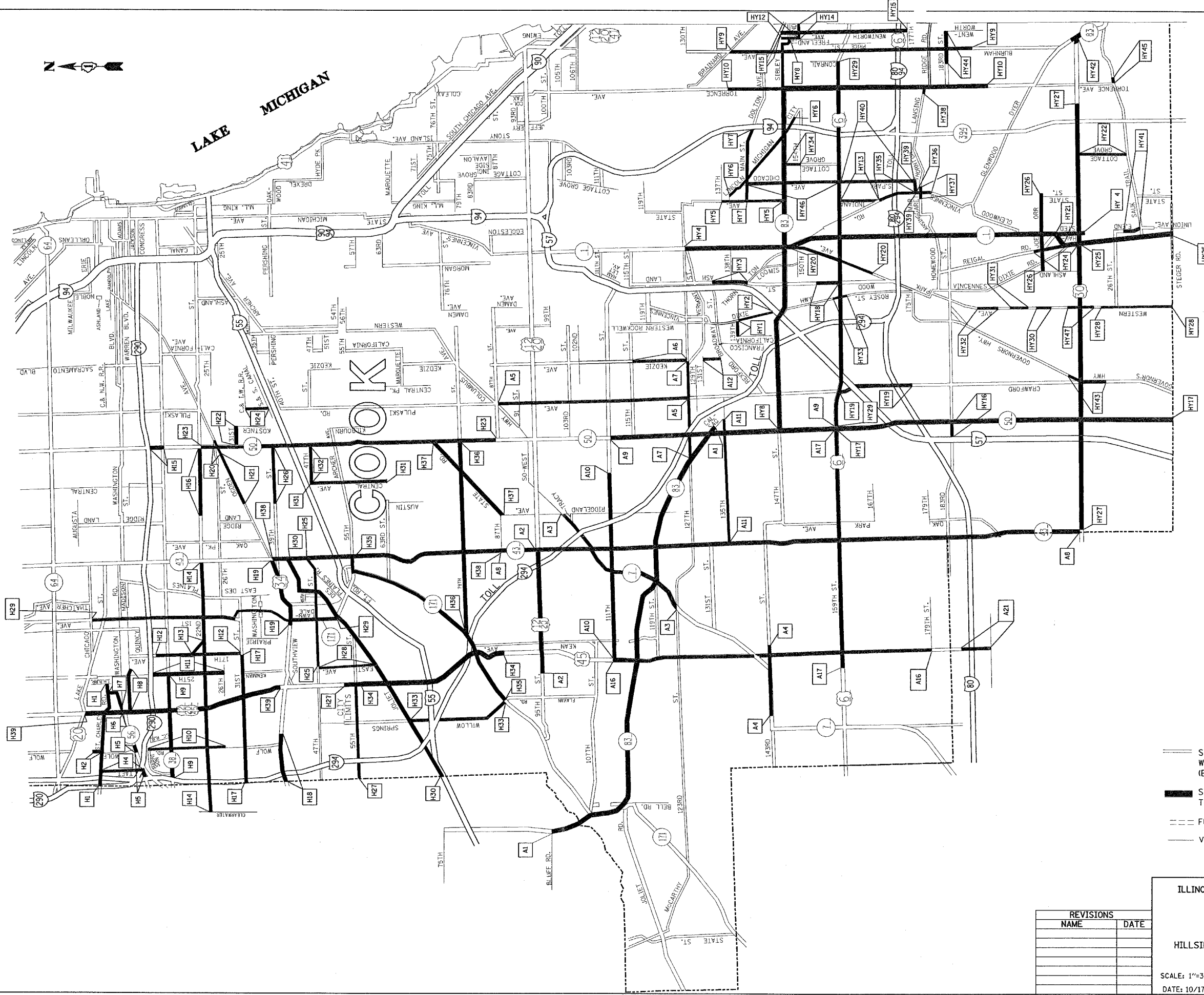
- DISTRICT NO. 1
- STATE HIGHWAYS & EXPRESSWAYS WITHIN STATE JURISDICTION (EXCEPT TOLLWAYS)
 - STATE HIGHWAYS & EXPRESSWAYS TO BE CLEANED
 - - - FUTURE HIGHWAYS
 - VARIOUS AGENCIES HIGHWAYS

REVISIONS	
NAME	DATE

ILLINOIS DEPARTMENT OF TRANSPORTATION
 ARTERIAL CLEANING
 LOCATION MAP
 COOK COUNTY NORTH OF & INCLUDING
 ILL. RTE. 64 (NORTH AVE.)
 ARLINGTON, NORTHBROOK, NORTHSIDE
 AND I-290 ARTERIAL
 TEAM SECTIONS

SCALE: 1"=3 MILES
 DATE: 10/17/2005

DRAWN BY
 CHECKED BY



LAKE MICHIGAN

COOK

P. A. NO.	SECTION	COUNTY	TOTAL SHEETS	SHEET NO.
VAR.	2004-090 I	VARIOUS	13	9
STA.	TO STA.			
FED. ROAD DIST. NO.	ILLINOIS	FED. AID PROJECT		

CONTRACT NO. 62830

TEAM SECTION	KEY LOCATIONS
HILLSIDE	H1-H39
ALSIP	A1-A21
HARVEY	HY1-HY47

- DISTRICT NO. 1
- STATE HIGHWAYS & EXPRESSWAYS WITHIN STATE JURISDICTION (EXCEPT TOLLWAYS)
 - STATE HIGHWAYS & EXPRESSWAYS TO BE CLEANED
 - FUTURE HIGHWAYS
 - VARIOUS AGENCIES HIGHWAYS

ILLINOIS DEPARTMENT OF TRANSPORTATION
 ARTERIAL CLEANING
 LOCATION MAP
 COOK COUNTY SOUTH OF
 ILL. RTE. 64 (NORTH AVE.)
 HILLSIDE, ALSIP AND HARVEY TEAM SECTIONS

REVISIONS	
NAME	DATE

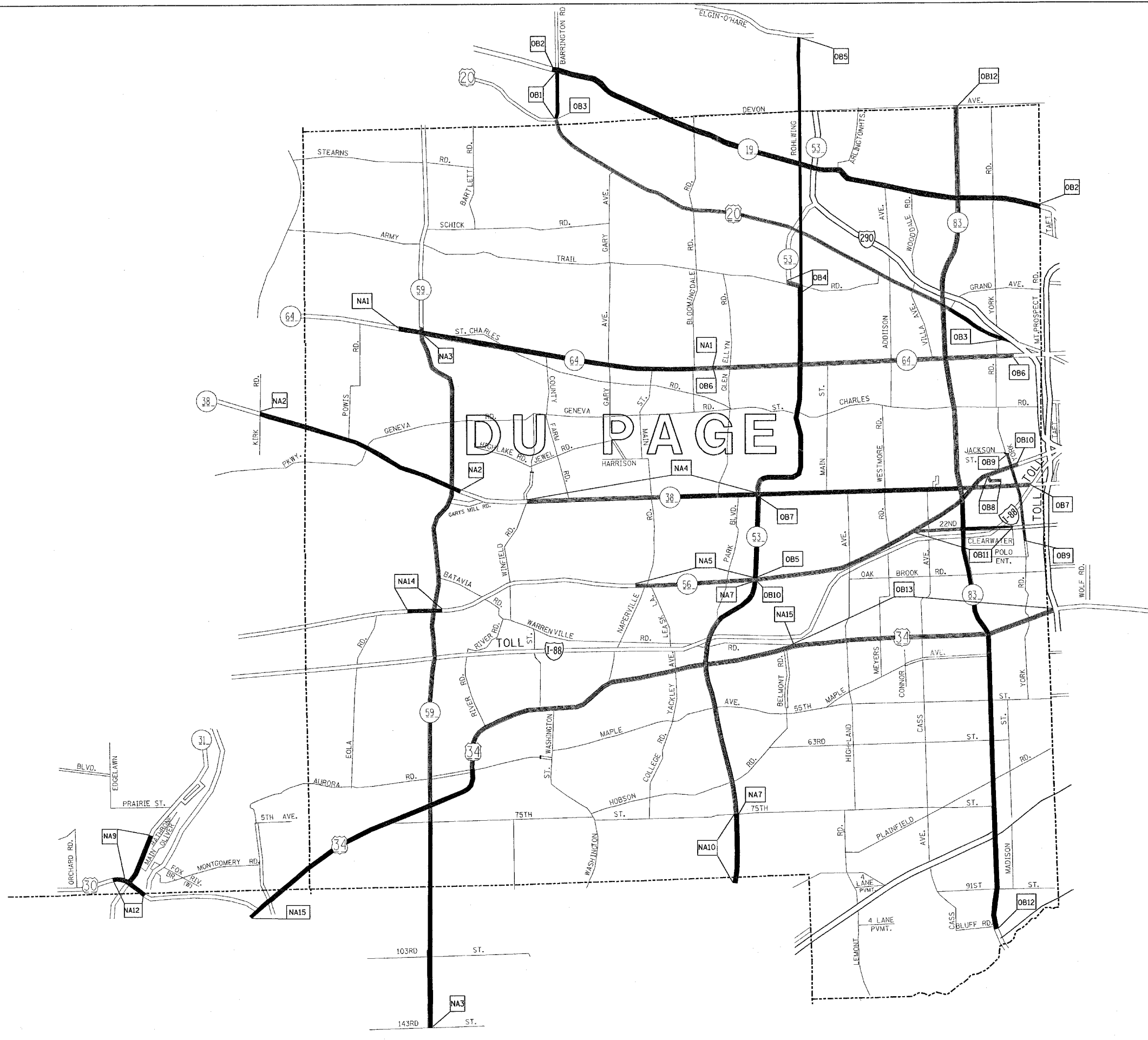
SCALE: 1"=3 MILES
 DATE: 10/17/2005
 DRAWN BY:
 CHECKED BY:

F.A. NO.	SECTION	COUNTY	TOTAL SHEETS	SHEET NO.
VAR.	2004-090 I	VARIOUS	13	10
STA.	TO STA.			
FED. ROAD DIST. NO.	ILLINOIS	FED. AID PROJECT		

CONTRACT NO. 62830



TEAM SECTION	KEY LOCATIONS
OAKBROOK	OB1-OB13
NAPERVILLE	NA1-NA15



- DISTRICT NO. 1
- STATE HIGHWAYS & EXPRESSWAYS WITHIN STATE JURISDICTION (EXCEPT TOLLWAYS)
 - STATE HIGHWAYS & EXPRESSWAYS TO BE CLEANED
 - - - FUTURE HIGHWAYS
 - VARIOUS AGENCIES HIGHWAYS

ILLINOIS DEPARTMENT OF TRANSPORTATION

ARTERIAL CLEANING
LOCATION MAP
DU PAGE COUNTY
OAKBROOK AND NAPERVILLE TEAM SECTIONS

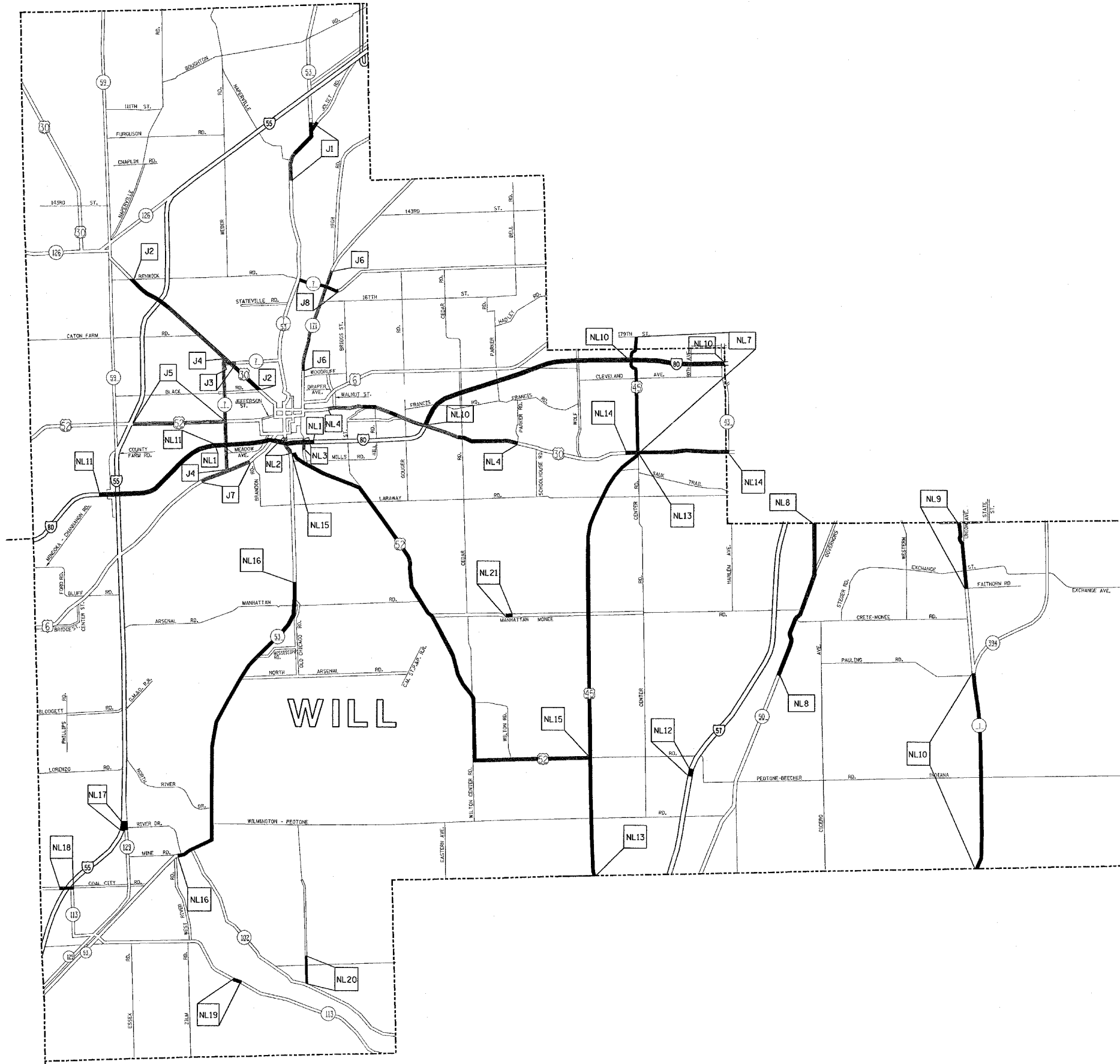
SCALE: 1"=1.5 MILES
DATE: 10/17/2005

DRAWN BY: CADD
CHECKED BY:

REVISIONS	
NAME	DATE

F. A. MILE	SECTION	COUNTY	TOTAL SHEETS	SHEET NO.
VAR.	2004-090 I	VARIOUS	13	11
STA.	TO STA.			
FED. ROAD DIST. NO.	ILLINOIS	FED. AID PROJECT		

CONTRACT NO. 62830



TEAM SECTION	KEY LOCATIONS
JOLIET	J1 - J8
NEW LENOX	NL1 - NL21

- DISTRICT NO. 1
- STATE HIGHWAYS & EXPRESSWAYS WITHIN STATE JURISDICTION (EXCEPT TOLLWAYS)
 - STATE HIGHWAYS & EXPRESSWAYS TO BE CLEANED
 - FUTURE HIGHWAYS
 - VARIOUS AGENCIES HIGHWAYS

REVISIONS	
NAME	DATE

ILLINOIS DEPARTMENT OF TRANSPORTATION
**ARTERIAL CLEANING
LOCATION MAP
WILL COUNTY
JOLIET AND NEW LENOX TEAM SECTION**

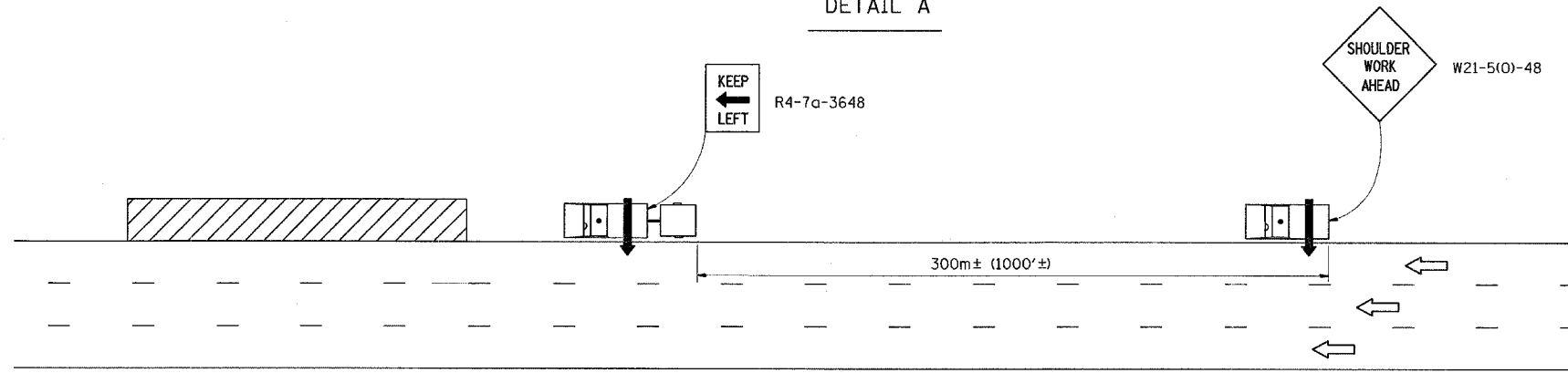
SCALE: 1"=2 MILES
DATE: 10/17/2005

DRAWN BY: CADD
CHECKED BY:

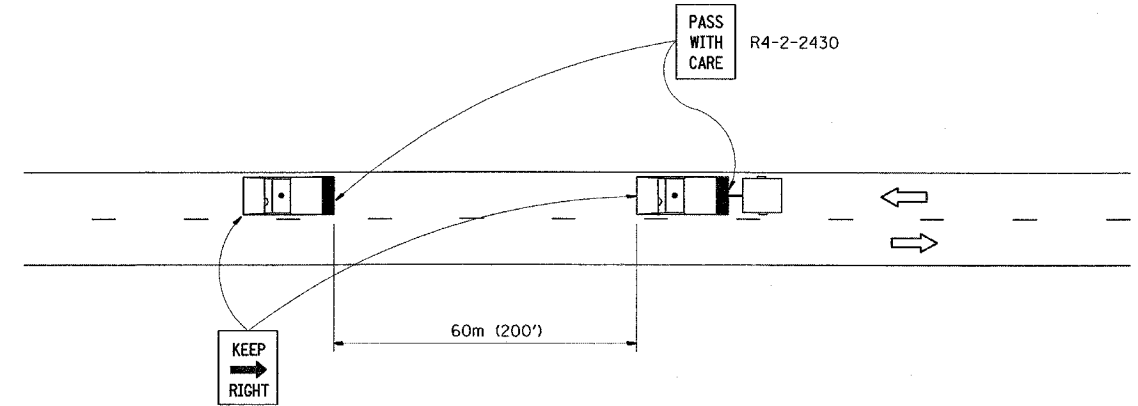
F. & A. RTE.	SECTION	COUNTY	TOTAL SHEETS	SHEET NO.
VAR.	2004-090 I	VARIOUS	13	12
STA.		TO STA.		
FED. ROAD DIST. NO.	ILLINOIS	FED. AID PROJECT		

CONTRACT NO. 62830

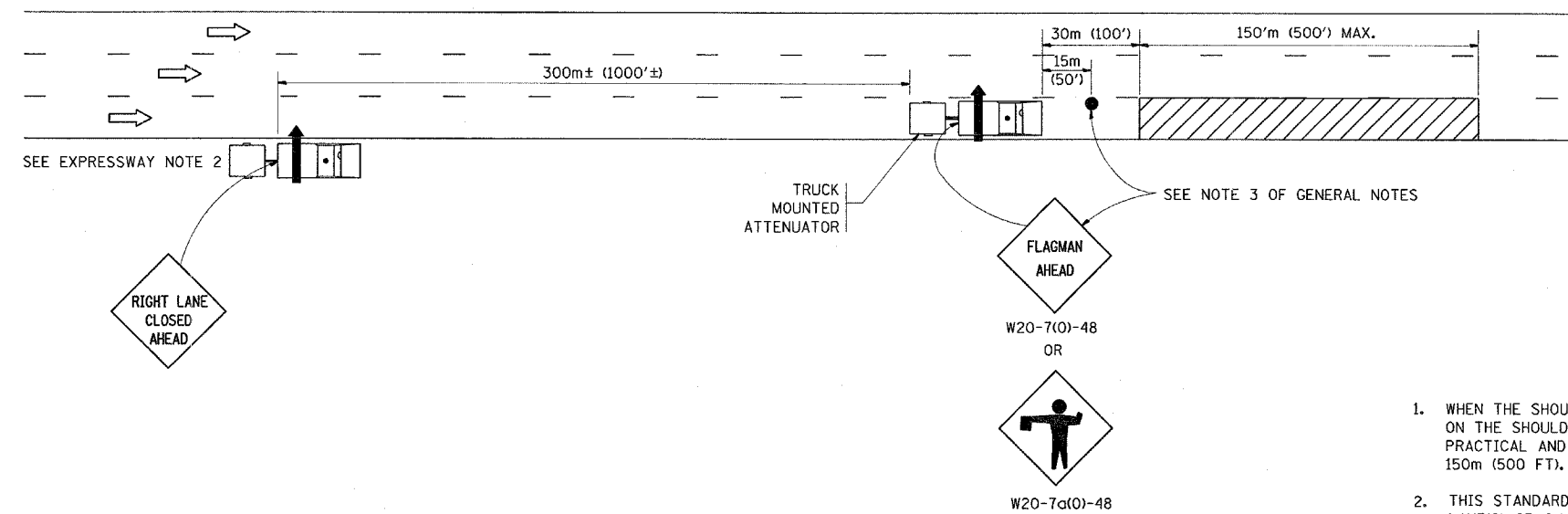
DETAIL A



DETAIL C



DETAIL B



GENERAL NOTES

1. WHEN THE SHOULDER DOES NOT EXIST, OR IS NARROW, FOLLOWING VEHICLES SHOWN ON THE SHOULDER SHALL RIDE AS CLOSE TO THE EDGE OF THE TRAVELLED WAY AS PRACTICAL AND THE SPACING TO THE NEXT VEHICLE REDUCED TO APPROXIMATELY 150m (500 FT).
2. THIS STANDARD IS ALSO APPLICABLE WHEN WORK IS BEING PERFORMED IN THE LEFT LANE(S) OR ON THE MEDIAN SHOULDER. UNDER THESE CONDITIONS, "KEEP RIGHT" SIGNS SHALL BE SUBSTITUTED FOR "KEEP LEFT" SIGNS AND ARROW BOARD INDICATIONS SHALL BE DIRECTED TO THE RIGHT.
3. WHEN FLAGGERS ARE SPECIFIED, FLAGGER SIGNS SHALL BE PLACED AS SHOWN.
4. WHEN USING DETAIL B, OR WHERE WORKERS ARE IN THE LEAD VEHICLE, OTHER THAN IN THE CAB, THE FOLLOWING VEHICLE SHALL BE POSITIONED BEHIND THE LEAD VEHICLE AND THE SPACING REDUCED TO APPROXIMATELY 150m (500 FT).
5. LONGITUDINAL DISTANCES MAY BE ADJUSTED TO FIT FIELD CONDITIONS. THE LATERAL PLACEMENT OF THE FLAGGER MAY BE VARIED FROM THAT SHOWN.
6. WATER TRUCKS USED TO CONTROL DUST PROPAGATION ARE ALLOWED TO OPERATE BY THEMSELVES. THEY SHALL AVOID SUDDEN STOPS.
7. ALL VEHICLES SHALL HAVE HEADLIGHTS AND EMERGENCY FLASHERS OPERATING AND SHALL DISPLAY AN AMBER COLORED OSCILLATING, ROTATING OR FLASHING LIGHT(S). AT LEAST ONE AMBER LIGHT IS TO BE VISIBLE FROM ANY DIRECTION.
8. ALL SWEEPERS, SIGN CLEANING TRUCKS, WATER TRUCKS AND FOLLOW VEHICLES SHALL HAVE ARROW BOARDS, AND APPROPRIATE SIGNS.

SYMBOLS

- ARROW BOARD (HAZARD MODE ONLY)
- ARROW BOARD
- FLAGGER WITH TRAFFIC CONTROL SIGNS
- WORK AREA
- TRUCK WITH FLASHING AMBER LIGHT
- TRUCK WITH FLASHING AMBER LIGHT AND TRUCK MOUNTED ATTENUATOR

EXPRESSWAY NOTES

1. A FOLLOW VEHICLE(S) WITH ARROW BOARD IS REQUIRED AT ALL TIMES.
2. TRUCK MOUNTED ATTENUATORS ARE REQUIRED ON ALL CLEANING OPERATIONS.
3. WHEN WITHIN THE INNER CITY LIMITS OR ON SHOULDERS THAT ARE TOO NARROW FOR THE FOLLOW VEHICLE, THE SECOND FOLLOW VEHICLE SHALL HAVE A TRUCK MOUNTED ATTENUATOR.
4. WHEN WORKING ON RAMP, THE SECOND FOLLOW VEHICLE SHALL REMAIN ON THE MAINLINE SHOULDER IN ADVANCE OF THE RAMP. THE FOLLOW VEHICLE SHALL HAVE A "RAMP WORK AHEAD" SIGN.
5. SIGN CLEANING SHALL HAVE THE SAME TRAFFIC CONTROL AND PROTECTION REQUIREMENTS AS OUTLINED FOR SWEEPING OPERATIONS.

ARTERIAL NOTES

1. DETAIL C SHALL APPLY
2. TRUCK MOUNTED ATTENUATORS ARE REQUIRED ON ALL CLEANING OPERATIONS.

REVISIONS	
NAME	DATE

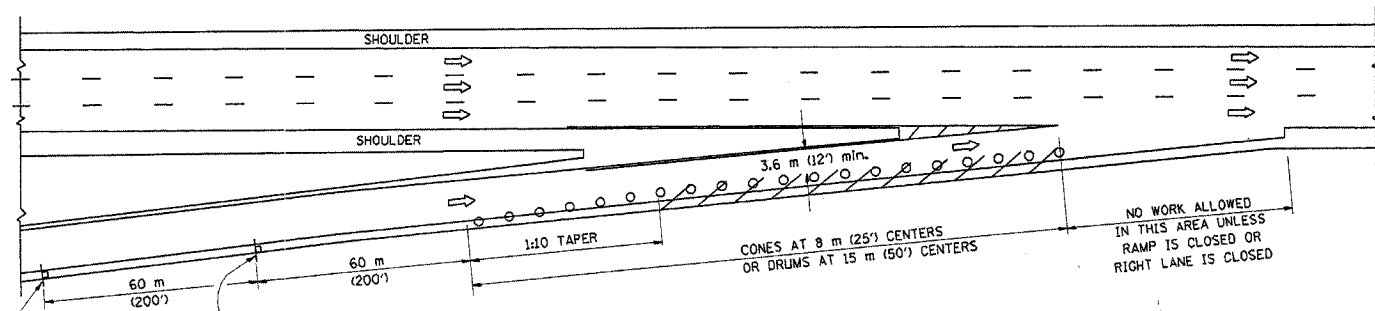
ILLINOIS DEPARTMENT OF TRANSPORTATION

DISTRICT ONE DETAILS:
TYPICAL APPLICATION OF
TRAFFIC CONTROL DEVICES
HIGHWAY OPERATIONS-DAY TIME ONLY

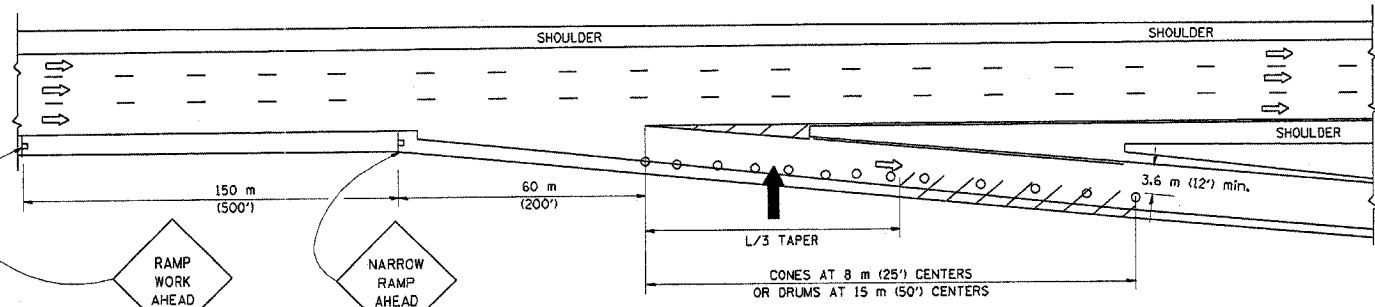
SCALE: NONE
DATE 10/17/2005

DRAWN BY CAD
CHECKED BY

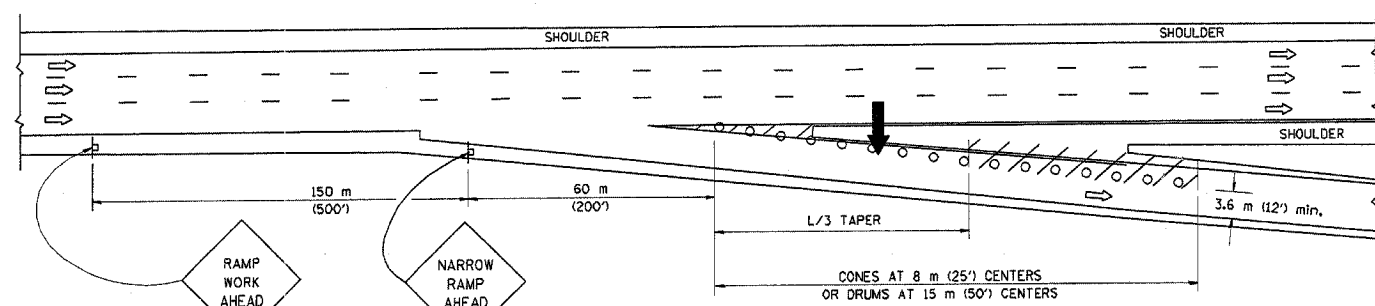
PARTIAL RAMP CLOSURE DETAILS



TYPICAL ENTRANCE RAMP



TYPICAL EXIT RAMP



TYPICAL EXIT RAMP

SYMBOLS

- ARROWBOARD
- WORK AREA
- SIGN ON PORTABLE OR PERMANENT SUPPORT
- FLAGGER WITH CONTROL SIGN
- DRUM WITH MONO-DIRECTIONAL STEADY BURNING LIGHT
- CONES - 700 (28) IN HEIGHT

GENERAL NOTES

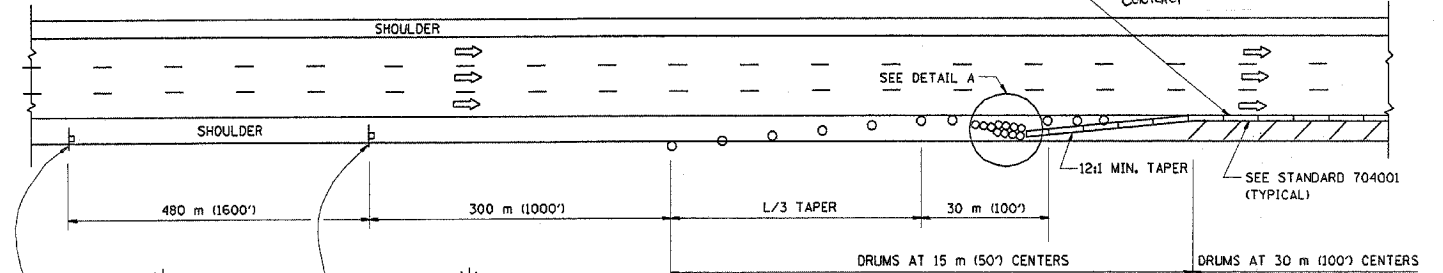
1. THE "L" DISTANCE EQUALS:

SPEED LIMIT	FORMULAS
80 km/h (45 mph) OR GREATER:	METRIC ENGLISH L=0.65(W/S) L=(W/S)
W = WIDTH OF OFFSET IN METERS (FEET)	
S = NORMAL POSTED SPEED KM/H (MPH)	
2. PLASTIC DRUMS WITH HIGH PERFORMANCE REFLECTIVE SHEETING AND STEADY BURNING LIGHTS ARE REQUIRED FOR ALL NIGHTTIME CLOSURES.
3. ALL SIGNS SHALL BE POST MOUNTED IF THE CLOSURE TIME EXCEEDS FOUR DAYS.
4. FLASHING LIGHTS SHALL BE USED DURING THE HOURS OF DARKNESS AND SHALL BE INSTALLED ABOVE THE FIRST TWO SETS OF SIGNS.

SHOULDER CLOSURE DETAILS

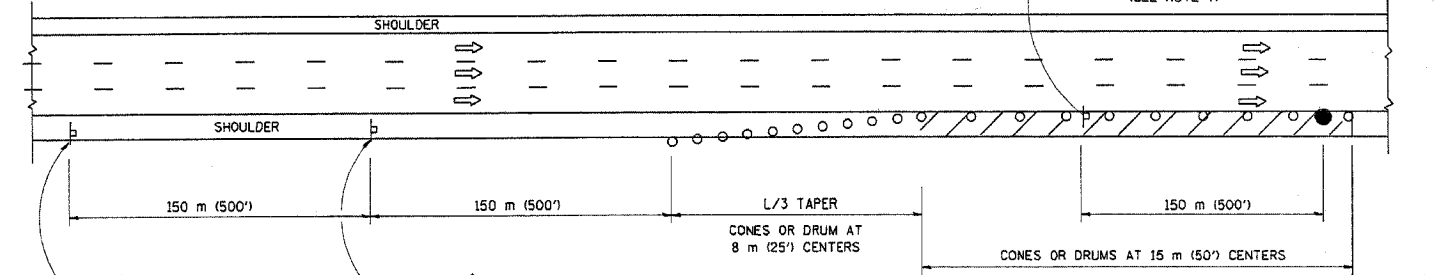
F.A. RTE.	SECTION	COUNTY	TOTAL SHEETS	SHEET NO.
VAR 2004-0901	VAR	VAR	13	13
STA.	TO STA.			
FED. ROAD DIST. NO.	ILLINOIS	FED. AID PROJECT CONTACT		

REFLECTIVE 150 (6) EDGE LINE ON LOWER SLOPE OF WALL (LEFT EDGE YELLOW, RIGHT EDGE WHITE)



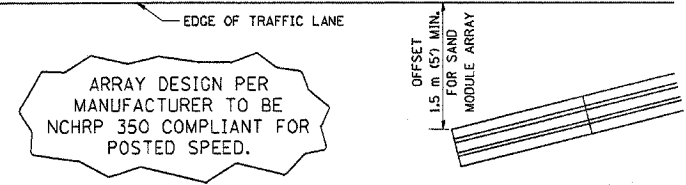
OR WHEN SPECIFIED INSTALL TEMPORARY CONCRETE BARRIER WALL WITH BARRIER WALL REFLECTORS PER STANDARD 701402, DETAIL A.

PERMANENT SHOULDER CLOSURE



THIS DETAIL IS USED WHERE:
1. VEHICLES, EQUIPMENT, WORKERS OR THEIR ACTIVITIES ENCROACH IN AN AREA CLOSER THAN 4.5 m (15') TO THE EDGE OF PAVEMENT FOR A PERIOD IN EXCESS OF 15 MINUTES.

DAYTIME SHOULDER CLOSURE



DETAIL "A"
IMPACT ATTENUATOR, TEMPORARY (SEE NOTE 5)

5. THE IMPACT ATTENUATOR, TEMPORARY IS NOT REQUIRED WHEN THE TEMPORARY CONCRETE BARRIER WALL IS OUTSIDE THE CLEAR ZONE OR IS TIED INTO THE EXISTING GUARDRAIL. IF OFFSET IS LESS THAN 5 FEET USE "TRAFFIC BARRIER TERMINAL, TYPE III, TEMPORARY" DEVICE TO MEET NCHRP 350 FOR POSTED SPEED.
6. AUTHORIZATION FROM THE DISTRICT'S BUREAU OF TRAFFIC IS REQUIRED FOR ALL FREEWAY CLOSURES.
7. THE FLAGGER AND FLAGGER SIGN ARE REQUIRED AT THE ABOVE WORK SITES WHEN:
 - a. FOUR OR MORE WORK VEHICLES ENTER THE TRAFFIC LANES IN A ONE HOUR PERIOD.
 - b. THE WORK ACTIVITY REQUIRES FREQUENT ENCROACHMENT INTO THE LANE OPEN TO TRAFFIC.
 THE FLAGGER SHALL BE STATIONED APPROXIMATELY 30 m (100') TO 60 m (200') IN ADVANCE OF THE WORKERS.

ALL DIMENSIONS ARE IN MILLIMETERS (INCHES) UNLESS OTHERWISE SHOWN.

ILLINOIS DEPARTMENT OF TRANSPORTATION

TRAFFIC CONTROL DETAILS FOR FREEWAY SHOULDER CLOSURES PARTIAL RAMP CLOSURES

REVISIONS	
NAME	DATE
DWS	11/96
JAF	12/02
NCHRP 350	04/03

SCALE: NONE
DATE: 05/06/2003

DRAWN BY: DWS
CHECKED BY: TC-17

REVISION DATE: 04/24/03