

CONTRACT NO. 62834				
F.A.I. RTE.	SECTION	COUNTY	TOTAL SHEETS	SHEET NO.
57	99-1-N	WILL	52	21
STA.	TO STA.			
FED. ROAD DIST. NO.	ILLINOIS	FED. AID PROJECT		
D-91-358-04				

Restoration of Work Area. Restoration of the traffic signal work area shall be incidental to the related pay item such as foundation, conduit, handhole, trench and backfill, etc., and no extra compensation shall be allowed. All roadway surfaces such as shoulders, median, sidewalks, pavement, etc. shall be replaced in kind. All damage to mowed lawns shall be replaced with an approved sod, and all damage to unmowed fields shall be seeded in accordance with Standard Specifications 252 and 250 respectively.

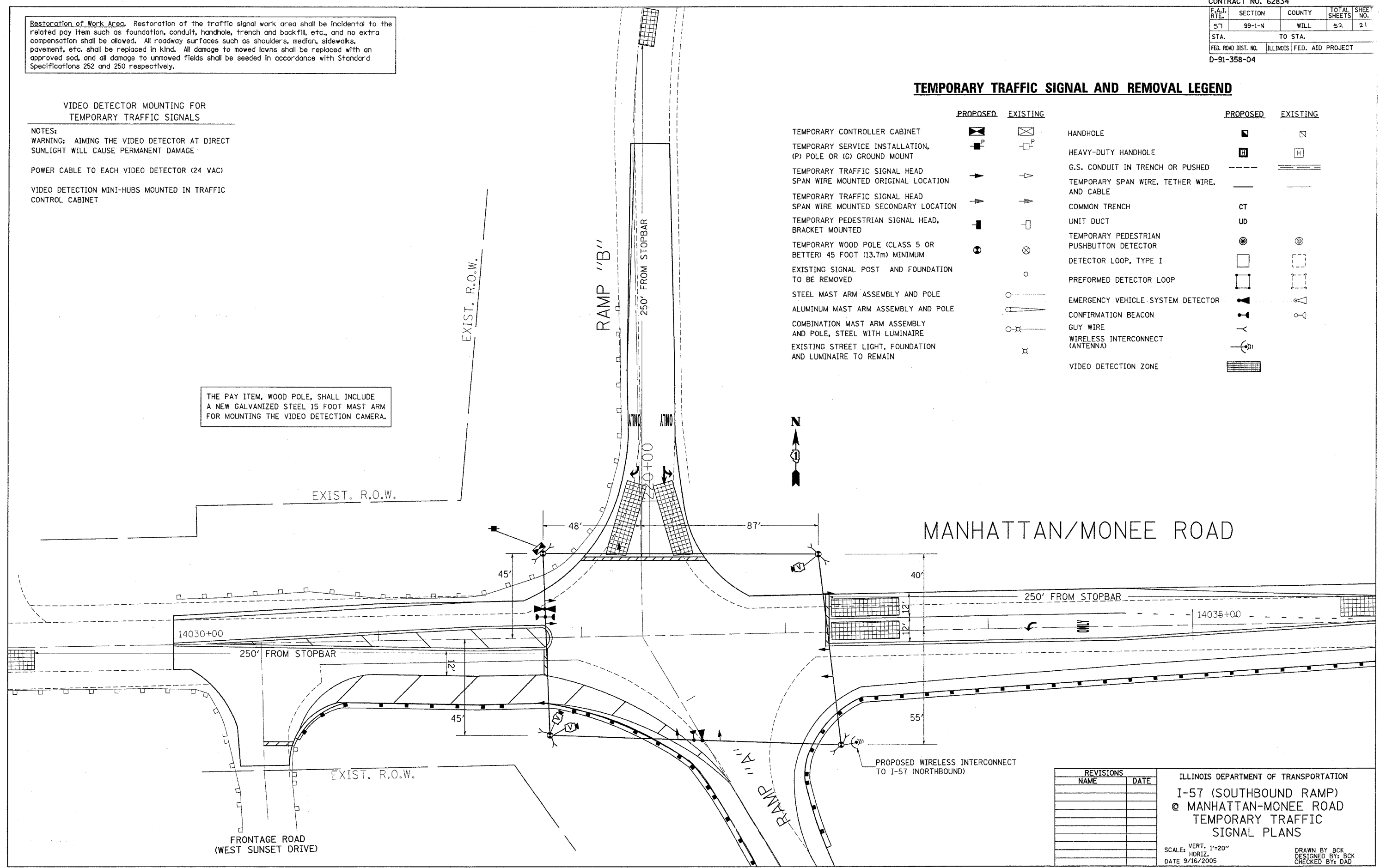
VIDEO DETECTOR MOUNTING FOR TEMPORARY TRAFFIC SIGNALS

- NOTES:
- WARNING: AIMING THE VIDEO DETECTOR AT DIRECT SUNLIGHT WILL CAUSE PERMANENT DAMAGE
 - POWER CABLE TO EACH VIDEO DETECTOR (24 VAC)
 - VIDEO DETECTION MINI-HUBS MOUNTED IN TRAFFIC CONTROL CABINET

THE PAY ITEM, WOOD POLE, SHALL INCLUDE A NEW GALVANIZED STEEL 15 FOOT MAST ARM FOR MOUNTING THE VIDEO DETECTION CAMERA.

TEMPORARY TRAFFIC SIGNAL AND REMOVAL LEGEND

	PROPOSED	EXISTING		PROPOSED	EXISTING
TEMPORARY CONTROLLER CABINET			HANDHOLE		
TEMPORARY SERVICE INSTALLATION, (P) POLE OR (G) GROUND MOUNT			HEAVY-DUTY HANDHOLE		
TEMPORARY TRAFFIC SIGNAL HEAD SPAN WIRE MOUNTED ORIGINAL LOCATION			G.S. CONDUIT IN TRENCH OR PUSHED		
TEMPORARY TRAFFIC SIGNAL HEAD SPAN WIRE MOUNTED SECONDARY LOCATION			TEMPORARY SPAN WIRE, TETHER WIRE, AND CABLE		
TEMPORARY PEDESTRIAN SIGNAL HEAD, BRACKET MOUNTED			COMMON TRENCH	CT	
TEMPORARY WOOD POLE (CLASS 5 OR BETTER) 45 FOOT (13.7m) MINIMUM			UNIT DUCT	UD	
EXISTING SIGNAL POST AND FOUNDATION TO BE REMOVED			TEMPORARY PEDESTRIAN PUSHBUTTON DETECTOR		
STEEL MAST ARM ASSEMBLY AND POLE			DETECTOR LOOP, TYPE I		
ALUMINUM MAST ARM ASSEMBLY AND POLE			PREFORMED DETECTOR LOOP		
COMBINATION MAST ARM ASSEMBLY AND POLE, STEEL WITH LUMINAIRE			EMERGENCY VEHICLE SYSTEM DETECTOR		
EXISTING STREET LIGHT, FOUNDATION AND LUMINAIRE TO REMAIN			CONFIRMATION BEACON		
			GUY WIRE		
			WIRELESS INTERCONNECT (ANTENNA)		
			VIDEO DETECTION ZONE		



PLOT DATE = 9/16/2005
 FILE NAME = c:\pco\jaco\140358884\traff.mxd
 PLOT SCALE = 28.0000 / IN.
 USER NAME = kent@pco.com

REVISIONS	
NAME	DATE

ILLINOIS DEPARTMENT OF TRANSPORTATION
 I-57 (SOUTHBOUND RAMP)
 @ MANHATTAN-MONEE ROAD
 TEMPORARY TRAFFIC SIGNAL PLANS

SCALE: VERT. 1"=20"
 HORIZ. DATE 9/16/2005

DRAWN BY: BCK
 DESIGNED BY: BCK
 CHECKED BY: DAD