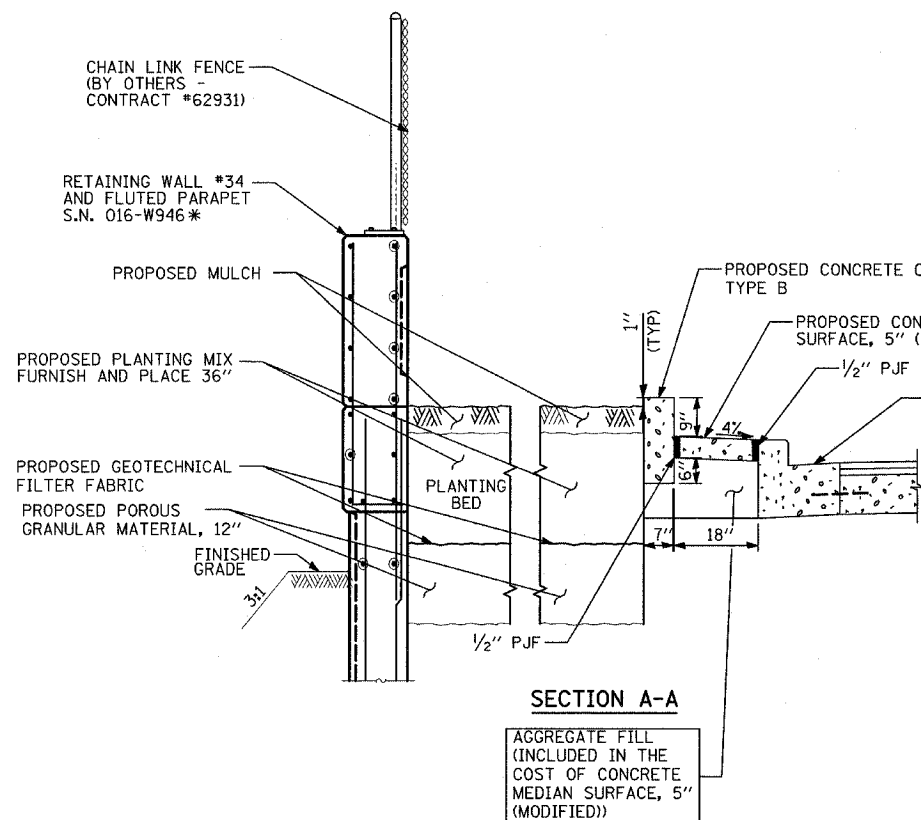
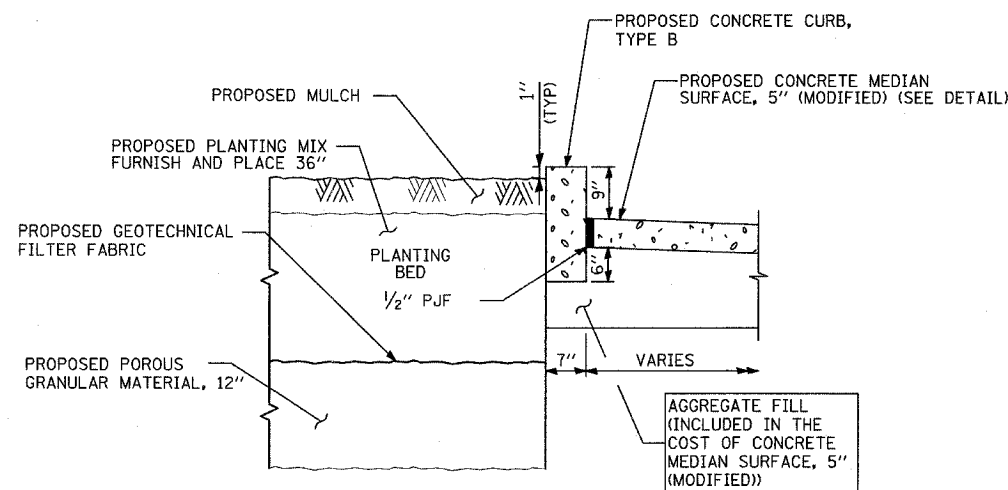


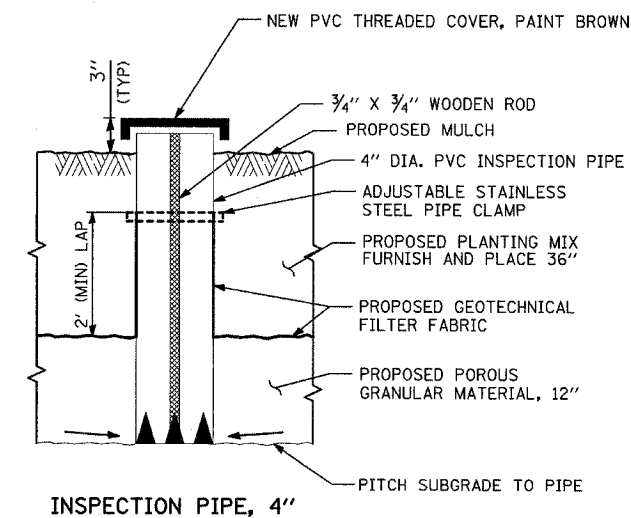
**PLANTING BED ALONG LAFAYETTE AVENUE SOUTH OF 95th STREET**



**SECTION A-A**



**SECTION B-B**



**INSPECTION PIPE, 4"**

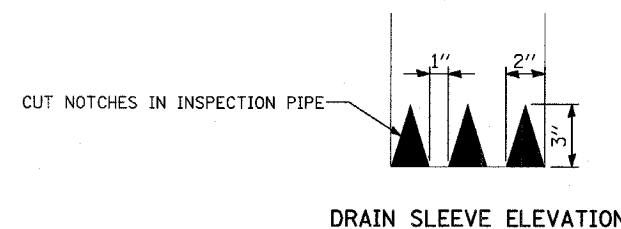
**NOTES:**

SEE SCHEDULE OF LANDSCAPE ITEMS FOR TYPE, SIZE, AND SPACING OF PLANT MATERIAL.

\* - ITEMS PROVIDED BY OTHERS - CONTRACT #62695.

COORDINATE PLACEMENT OF INSPECTION PIPE WITH LOCATION OF PROPOSED TREES AND SHRUBS.

MASTER IRRIGATION CONTROL VALVE IS TO BE INSTALLED AT THE DESIGNATED LOCATION SPECIFIED BY THE CITY OF CHICAGO DURING CONSTRUCTION AND ON PUBLIC PROPERTY.



REVISIONS	
NAME	DATE

ILLINOIS DEPARTMENT OF TRANSPORTATION  
**F.A.I. 94 (DAN RYAN EXPRESSWAY)**  
**PLANTING BED DETAIL**  
**LAFAYETTE AVENUE SOUTH OF 95th STREET**

SCALE: N.T.S. DRAWN BY: JDF  
 DATE: SEPTEMBER 2, 2005 CHECKED BY: TGB