

F.A.U. RTE.	SECTION	COUNTY	TOTAL SHEETS	SHEET NO.
3578	1327 F	COOK	16	1

STATE OF ILLINOIS  
DEPARTMENT OF TRANSPORTATION  
DIVISION OF HIGHWAYS  
**PROPOSED  
HIGHWAY PLANS**

FAU ROUTE 3578 (IL ROUTE 7) (SOUTHWEST HIGHWAY)  
OVER US ROUTE 45 (LA GRANGE RD./96TH AVE.)  
SECTION 1327 F  
**PROJECT: ACBRM-3578 (006)**  
BEAM AND BEARING FABRICATION  
**COOK COUNTY**  
**C-91-205-05**

FOR INDEX OF SHEETS, SEE SHEET NO. 2

**TRAFFIC DATA:**

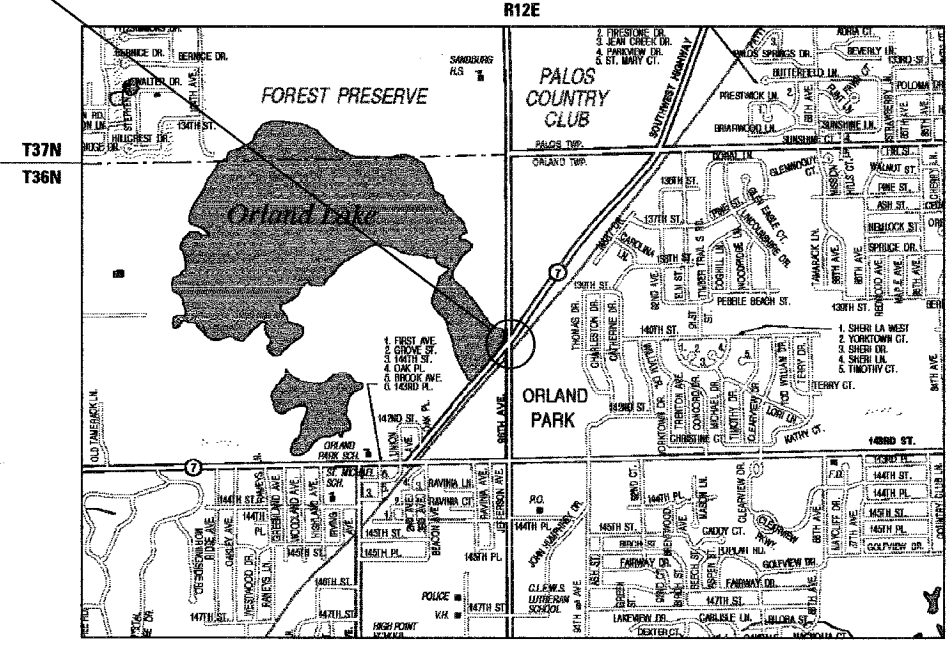
	2004	2020
ADT IL. RTE. 7	12,700	14,000
POSTED SPEED LIMIT IL. RTE. 7: 45 MPH		
DESIGN SPEED LIMIT IL. RTE. 7: 45 MPH		



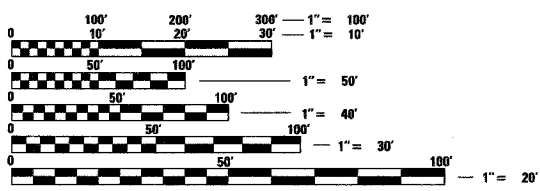
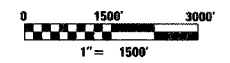
**PROJECT LOCATED IN:**

- **ORLAND PARK**

BRIDGE OVER US RTE 45  
STA. 1516 + 85.79  
BEAM AND BEARING FABRICATION  
EXIST. STRUCTURE NO. 016-0465  
PROP. STRUCTURE NO. 016-2847

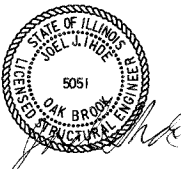


**LOCATION MAP**



FULL SIZE PLANS HAVE BEEN PREPARED USING STANDARD ENGINEERING SCALES. REDUCED SIZED PLANS WILL NOT CONFORM TO STANDARD SCALES. IN MAKING MEASUREMENTS ON REDUCED PLANS, THE ABOVE SCALES MAY BE USED.

J.U.L.I.E.  
JOINT UTILITY LOCATION INFORMATION FOR EXCAVATION  
1-800-892-0123



DATE SIGNED: 8-17-05  
EXP. DATE: 11-30-06

STATE OF ILLINOIS  
DEPARTMENT OF TRANSPORTATION  
DIVISION OF HIGHWAYS

SUBMITTED Aug 19 2005

Eric E. Hamm DISTRICT ENGINEER

October 14, 2005  
Mike Hine ENGINEER OF DESIGN AND ENVIRONMENT

October 14, 2005  
Eric E. Hamm DEPUTY DIRECTOR, DIVISION OF HIGHWAYS

**PRINTED BY THE AUTHORITY  
OF THE STATE OF ILLINOIS**

CONTRACT NO. 62952

FAU ROUTE 3578 SECTION: 1327F COOK COUNTY

CONSULTING ENGINEERS & LAND SURVEYORS  
 **Bollinger, Lach & Associates, Inc.**  
1010 JORIE BLVD • OAK BROOK, IL 60523 • 630.990.1385

IDOT CONSULTANT PROJECT MANAGER: MANAR NASHIF 847-705-4523 (DISTRICT 1)