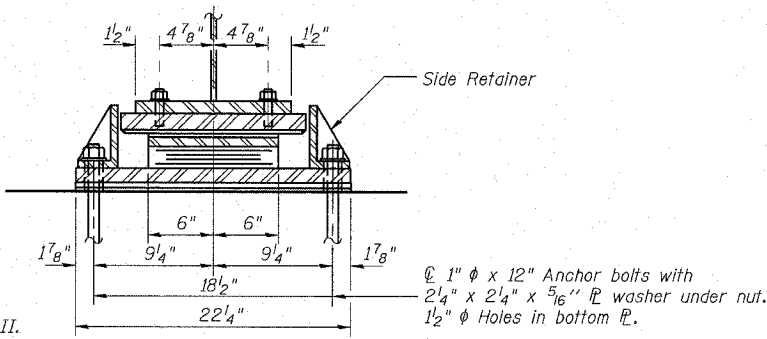
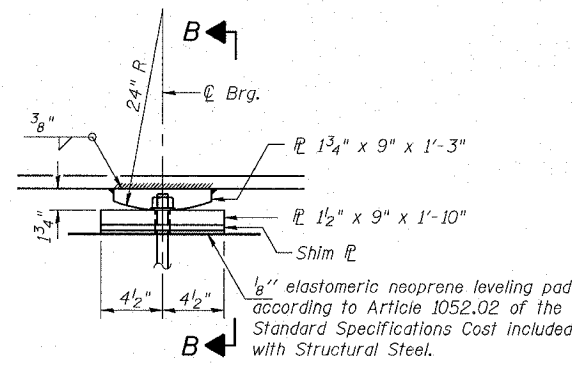


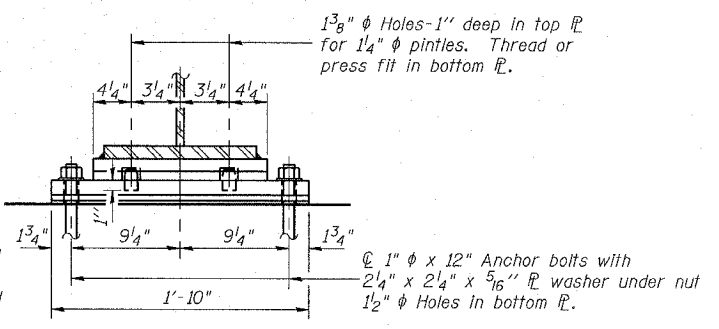
ELEVATION AT BOTH ABUTMENTS



SECTION A-A



ELEVATION AT BOTH PIERS



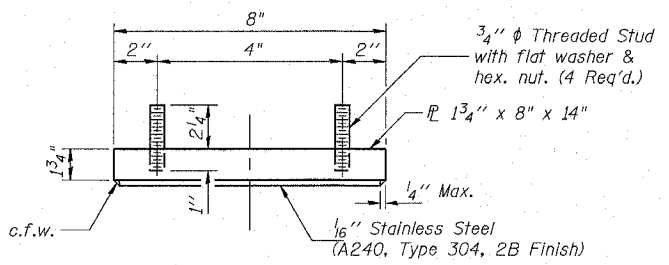
SECTION B-B

TYPE II ELASTOMERIC EXP. BRG.

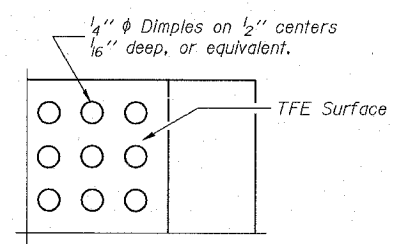
Notes: Anchor bolts at fixed bearings may be built into the masonry.
See sheet 12 of 24 for Anchor Bolt installation.
Provide 1/2" x 8" x 22 1/4" shim for beam #4 at north abutment. Provide 1/4" x 8" x 22 1/4" shim for beam #3 at south abutment. Provide 1/8" x 8" x 22 1/4" shim for beam #3 at Pier #2.

FIXED BEARING

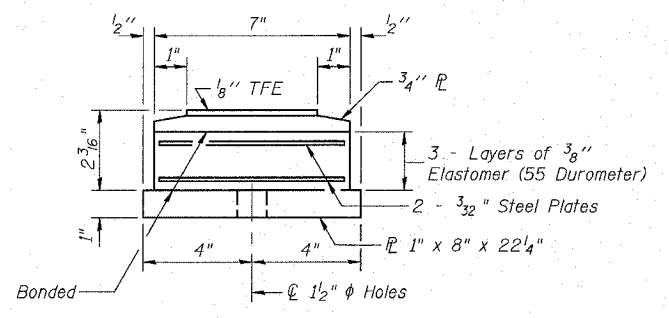
6 required at Pier #1 and 6 required at Pier #2



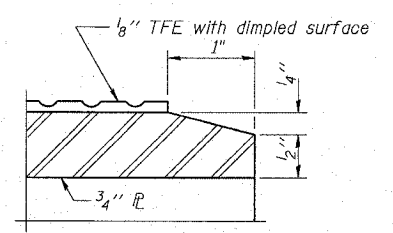
TOP BEARING ASSEMBLY



PLAN-TFE SURFACE



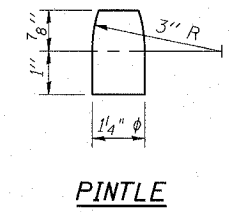
BOTTOM BEARING ASSEMBLY



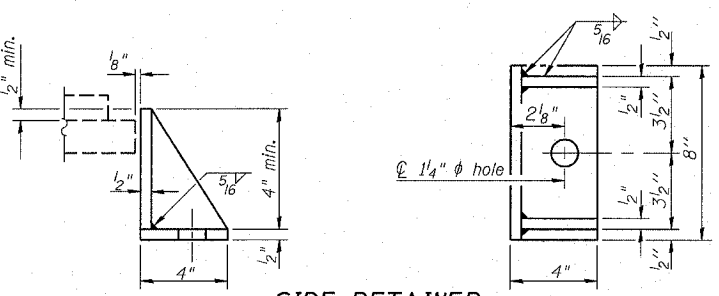
SECTION THRU TFE

Note: The 1/8" TFE sheet shall be bonded directly to the top steel plate with a two-component, medium viscosity epoxy resin, conforming to the requirements of the Federal Specification MMM-A-134, Type I. The bond agent shall be applied on the full area of the contact surfaces.

Bonding of 1/8" TFE sheet during vulcanizing process will be permitted provided the process and method of adjusting assembly height is approved by the Engineer.

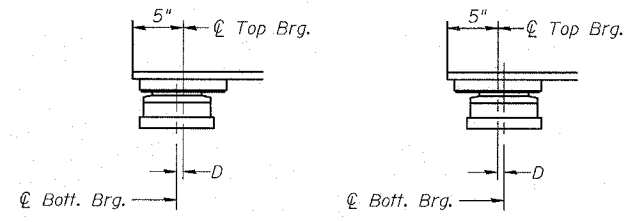


PINTLE



SIDE RETAINER

Equivalent rolled angle with stiffeners will be allowed in lieu of welded plates. Weight included with Structural Steel.



SETTING ANCHOR BOLTS AT EXP. BRG.

D = 1/8" per each 100' of expansion for every 15° temp. change from the normal temp. of 50°F.

BILL OF MATERIAL

Item	Unit	Total
Elastomeric Bearing Assembly Type II	Each	12

BEARING DETAILS
IL RTE 40 OVER WINNEBAGO DITCH
F.A.P. 646 SECTION (102)BR-3
WHITESIDE COUNTY
STATION 558+38
S.N. 098-0109

DRAWN	DDB	<p>RANDOLPH & ASSOCIATES, INC. 111 N. PEARSON PARKWAY, PEORIA, IL 61614-2124 TEL: 309-251-2888 FAX: 309-251-2888 WWW.RANDOLPHASSOCIATES.COM CONSULTING ENGINEERS & LAND SURVEYORS</p>	FILE NUMBER
CHECKED	AMPH		136.110
DATE	JDB		Aug.
CHECKED	DDB		2005

R:\Pro\Projects\0136\0136-110 Winn ph 11-bearing detail.s.dgn

10:17:43 AM 8/8/2005